

STATE OF ILLINOIS
 DEPARTMENT OF TRANSPORTATION
 DIVISION OF HIGHWAYS

**PROPOSED
 HIGHWAY PLANS**

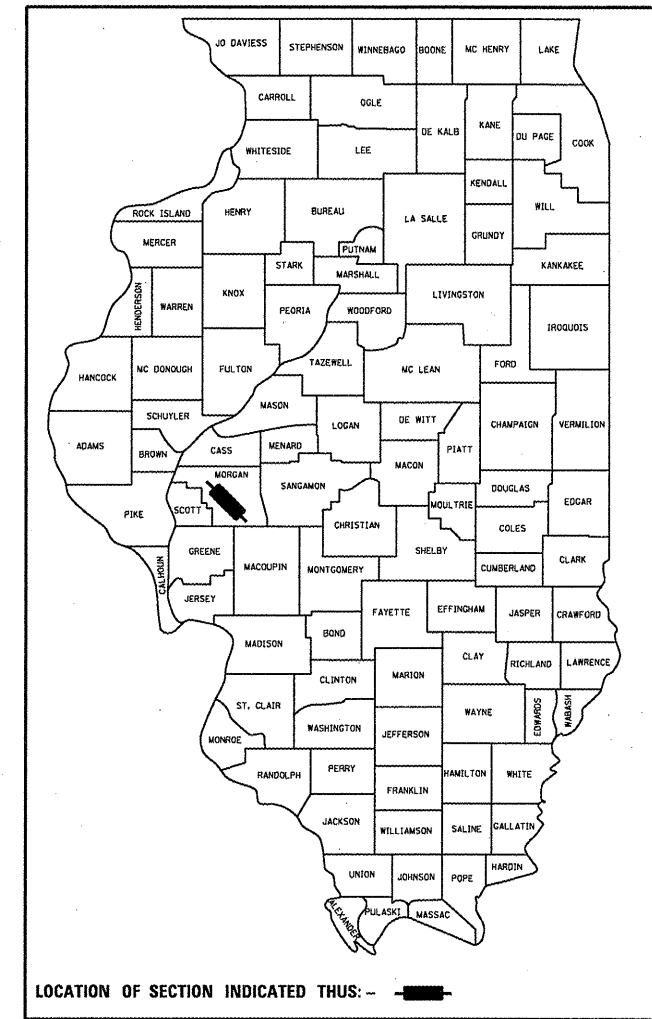
FAP ROUTE 310 (US 67)
 SECTION D6 BUILDING DEMOLITION 2012
 MORGAN COUNTY

F.A.P. RTE.	SECTION	COUNTY	TOTAL SHEETS	SHEET NO.
310		MORGAN	8	1
		ILLINOIS	CONTRACT NO. 72F11	

D6 BUILDING DEMOLITION 2012

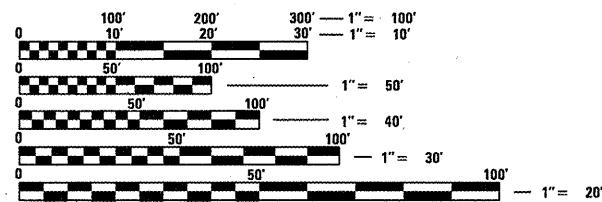
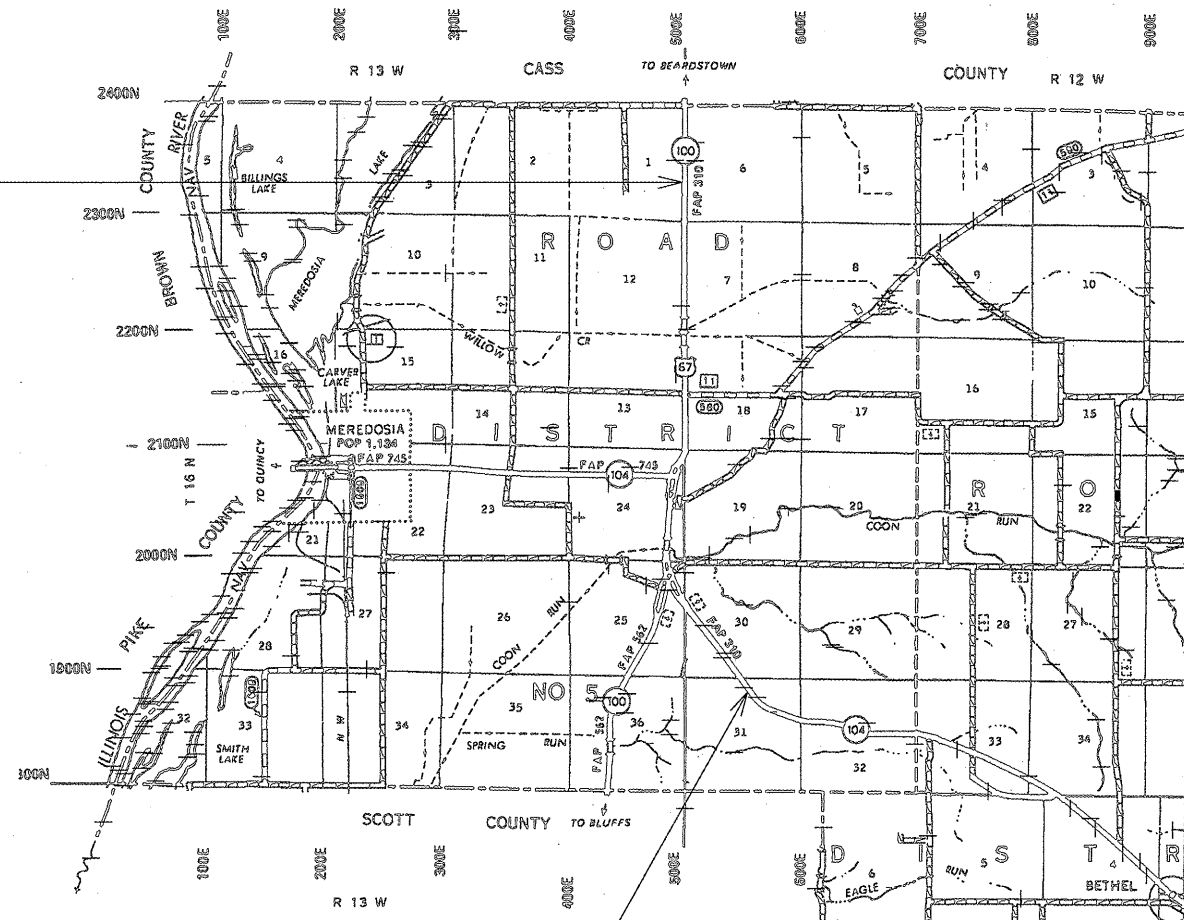
FOR INDEX OF SHEETS, SEE SHEET NO. 2

D-96-021-12



C-96-021-12

2345 US HIGHWAY 67
 PARCEL NO. 6098162



FULL SIZE PLANS HAVE BEEN PREPARED USING STANDARD ENGINEERING SCALES. REDUCED SIZED PLANS WILL NOT CONFORM TO STANDARD SCALES. IN MAKING MEASUREMENTS ON REDUCED PLANS, THE ABOVE SCALES MAY BE USED.

J.U.L.I.E.
 JOINT UTILITY LOCATION INFORMATION FOR EXCAVATION
 1-800-892-0123
 OR 811

SENIOR TEAM ENGINEER: VINCE MADONIA (217)785-9046
 TEAM ENGINEER: JULIET SHOULTZ (217)785-2739

1927 US HIGHWAY 67
 PARCEL NO. 6098163

CONTRACT NO. 72F11

STATE OF ILLINOIS
 DEPARTMENT OF TRANSPORTATION
 DIVISION OF HIGHWAYS

SUBMITTED 1/4 20 12
Ray Z. Dick
 DEPUTY DIRECTOR OF HIGHWAYS, REGION ENGINEER

Feb 3 20 12
John D. Buonomelli, P.E.
 ENGINEER OF DESIGN AND ENVIRONMENT

acting
Feb 3 20 12
William R. Frey, Jr.
 DIRECTOR OF HIGHWAYS, CHIEF ENGINEER

PRINTED BY THE AUTHORITY
 OF THE STATE OF ILLINOIS