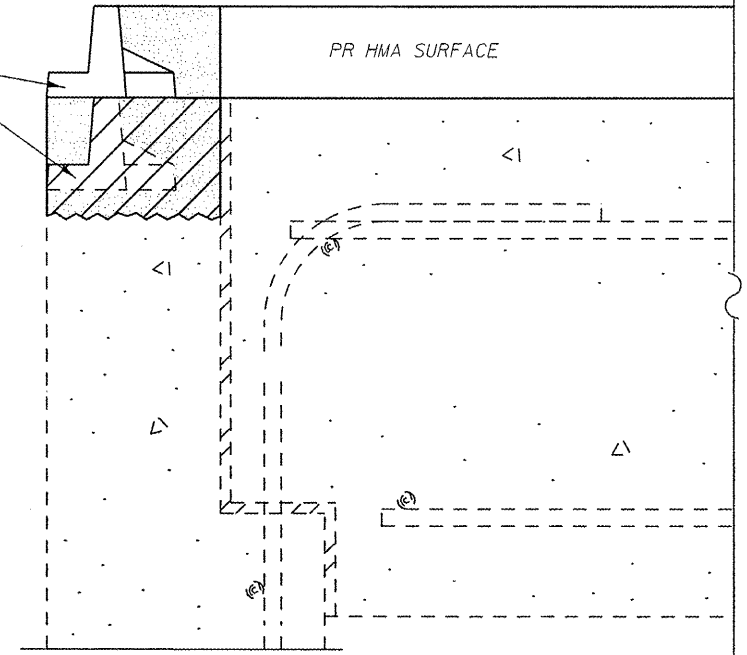


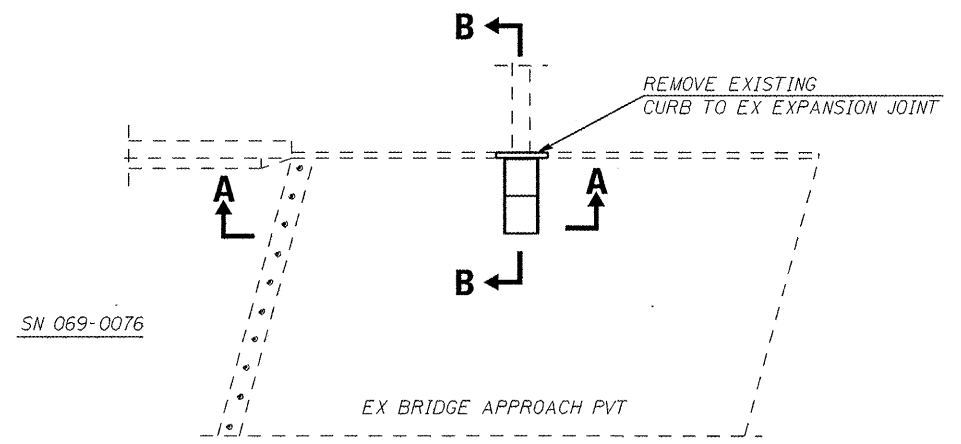
SECTION A-A

EXIST CASTING AND GRATE
TO BE REMOVED AND REINSTALLED

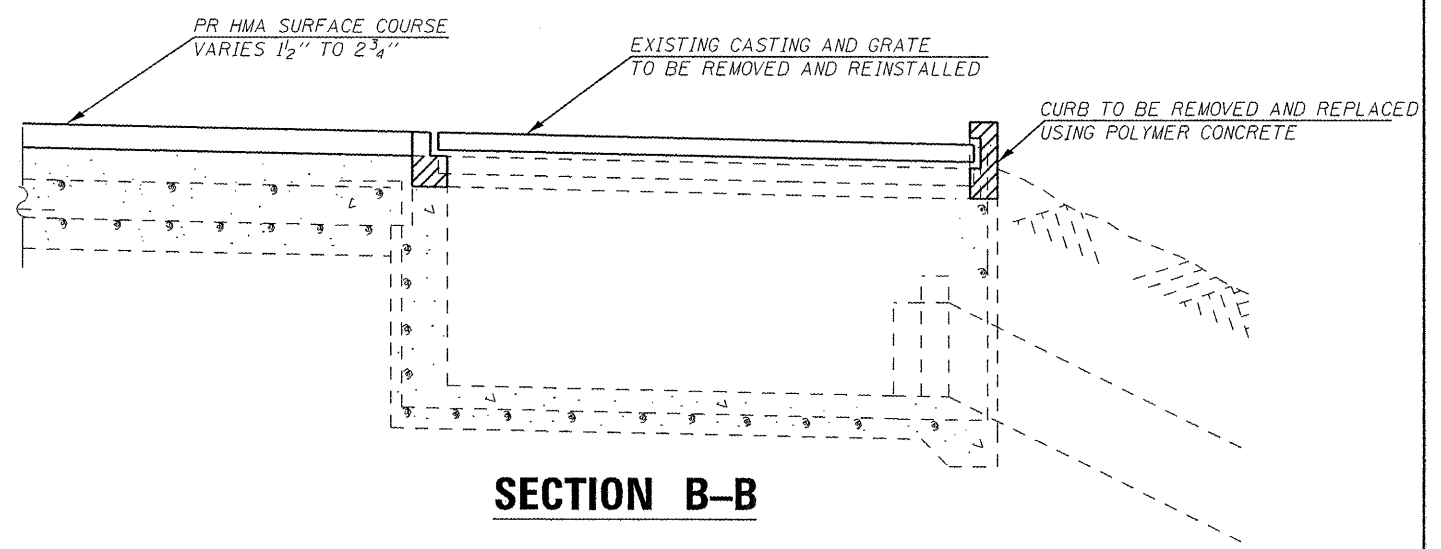


DETAIL A

- CONCRETE TO BE REMOVED
- POLYMER CONCRETE
APPROX. 3.5 CU FT PER INLET



TYPICAL DETAIL PLAN



SECTION B-B

FILE NAME =	USER NAME = coxte	DESIGNED -	REVISED -
et:\pwork\puidot\coxte\0288514\0672F18\shd-details.dgn		DRAWN -	REVISED -
		CHECKED -	REVISED -
		DATE -	REVISED -

**STATE OF ILLINOIS
DEPARTMENT OF TRANSPORTATION**

**INLET RECONSTRUCTION DETAIL
FAP RTE 310 (US 67)**

F.A.P. RTE.	SECTION	COUNTY	TOTAL SHEETS	SHEET NO.
310	(69-1) I-2	MORGAN	8	8
CONTRACT NO.			72F18	
ILLINOIS FED. AID PROJECT				

SCALE: SHEET OF SHEETS STA. TO STA.