

STATE OF ILLINOIS
DEPARTMENT OF TRANSPORTATION
DIVISION OF HIGHWAYS

**PROPOSED
HIGHWAY PLANS**

S.B.I. ROUTE 11 (OLD U.S. RTE. 40)
SECTION D7 HMA RESUR 2012-3

CONTRACT MAINTENANCE RESURF
CLARK COUNTY

C-97-082-11

FOR INDEX OF SHEETS, SEE SHEET NO. 2

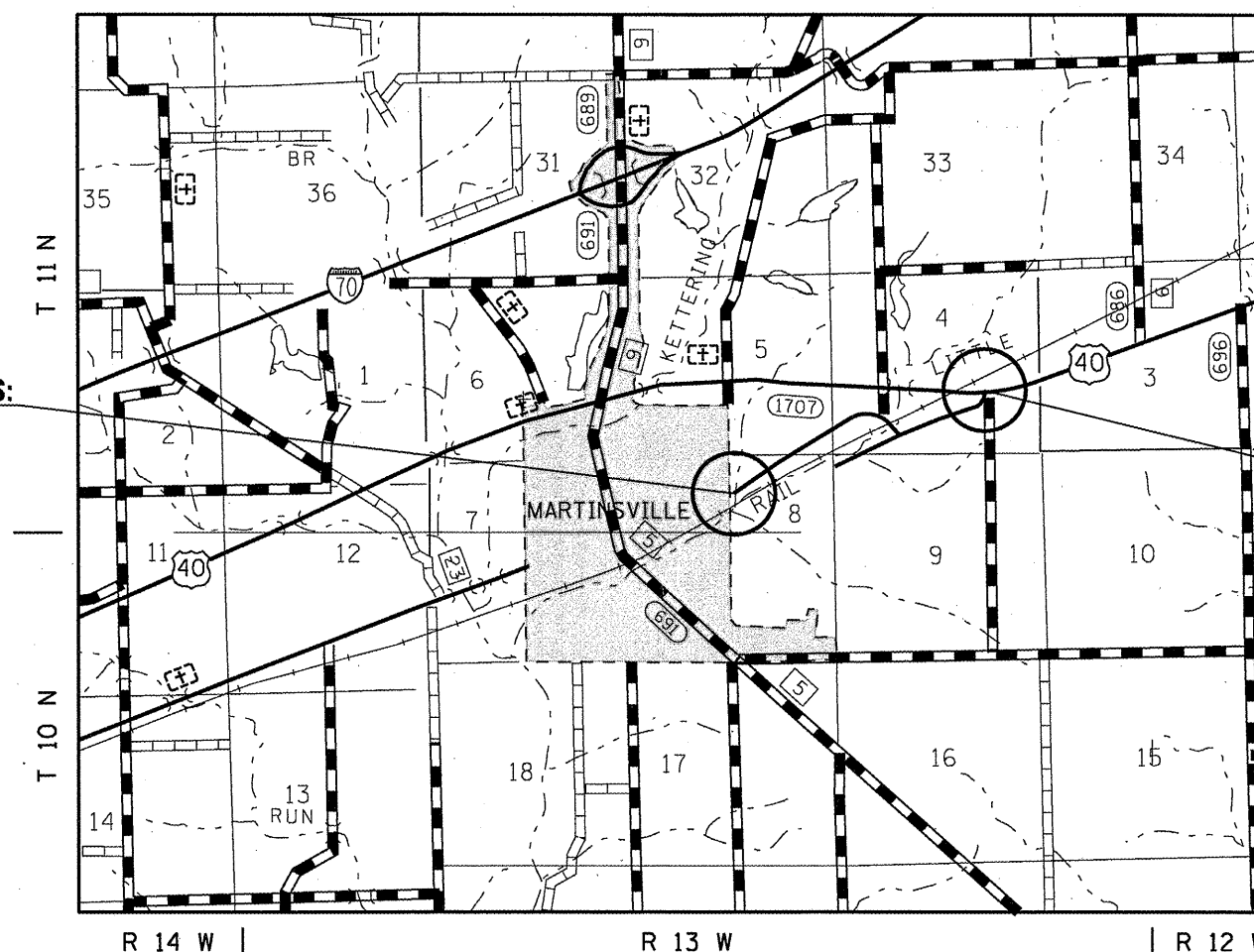
ADT = 500 (2006)

S.B.I. RTE.	SECTION	COUNTY	TOTAL SHEETS	SHEET NO.
11	DT HMA RESUR 2012-3	CLARK	11	1
		ILLINOIS	CONTRACT NO. 74533	

D-97-035-11

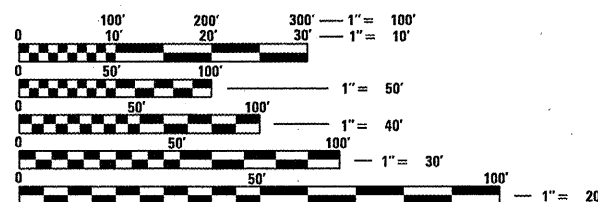


LOCATION OF SECTION INDICATED THUS: - [shaded box] -



PROJECT STARTS:
STATION 5+06

PROJECT ENDS:
STATION 79+85



FULL SIZE PLANS HAVE BEEN PREPARED USING STANDARD ENGINEERING SCALES. REDUCED SIZED PLANS WILL NOT CONFORM TO STANDARD SCALES. IN MAKING MEASUREMENTS ON REDUCED PLANS, THE ABOVE SCALES MAY BE USED.

J.U.L.I.E.
JOINT UTILITY LOCATION INFORMATION FOR EXCAVATION
1-800-892-0123
OR 811

PROJECT ENGINEER: TOM RONAN
PROJECT MANAGER: TOM RONAN
PHONE: 217-342-8320
CONTRACT NO. 74533

GROSS LENGTH = 7,479 FT. = 1.42 MILE
NET LENGTH = 7,304 FT. = 1.38 MILE

STATE OF ILLINOIS
DEPARTMENT OF TRANSPORTATION
DIVISION OF HIGHWAYS

SUBMITTED *Dec 7 20 11*
Roger L. Driskell
DEPUTY DIRECTOR OF HIGHWAYS, REGION ENGINEER

Feb 3 20 12
John D. Baranzelli, P.E.
ENGINEER OF DESIGN AND ENVIRONMENT

Feb 3 20 12
William R. Fleener
DIRECTOR OF HIGHWAYS, CHIEF ENGINEER

PRINTED BY THE AUTHORITY
OF THE STATE OF ILLINOIS