

03-09-12 LETTING ITEM 044

STATE OF ILLINOIS
DEPARTMENT OF TRANSPORTATION
DIVISION OF HIGHWAYS

**PROPOSED
HIGHWAY PLANS**

F.A.P. ROUTE 95 (IL. RTE. 33)
SECTION 7Z RS-2
PROJECT F-0095(057)
RESURFACING (3P)
EFFINGHAM COUNTY

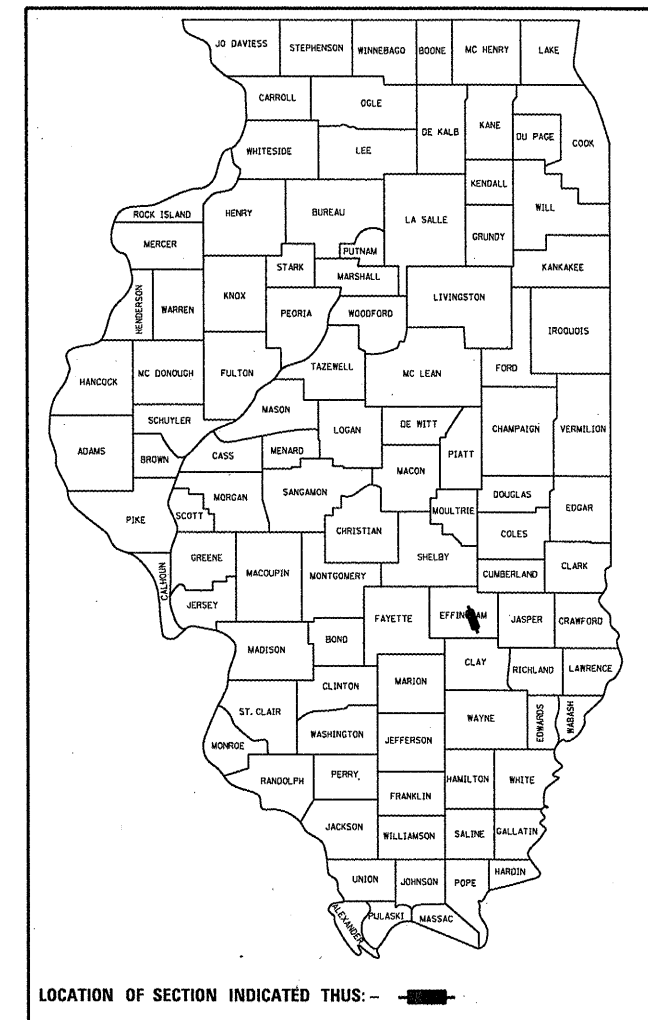
C-97-006-12

FOR INDEX OF SHEETS, SEE SHEET NO. 2

ADT = 6,655 (2009)

F.A.P. RTE.	SECTION	COUNTY	TOTAL SHEETS	SHEET NO.
95	7Z RS-2	EFFINGHAM	14	1
ILLINOIS			CONTRACT NO. 74541	

D-97-003-12

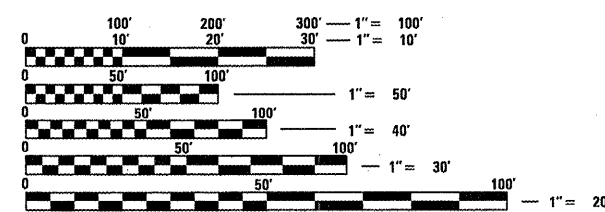


LOCATION OF SECTION INDICATED THIS: - [black rectangle] -



PROJECT BEGINS:
STA. 100 + 47

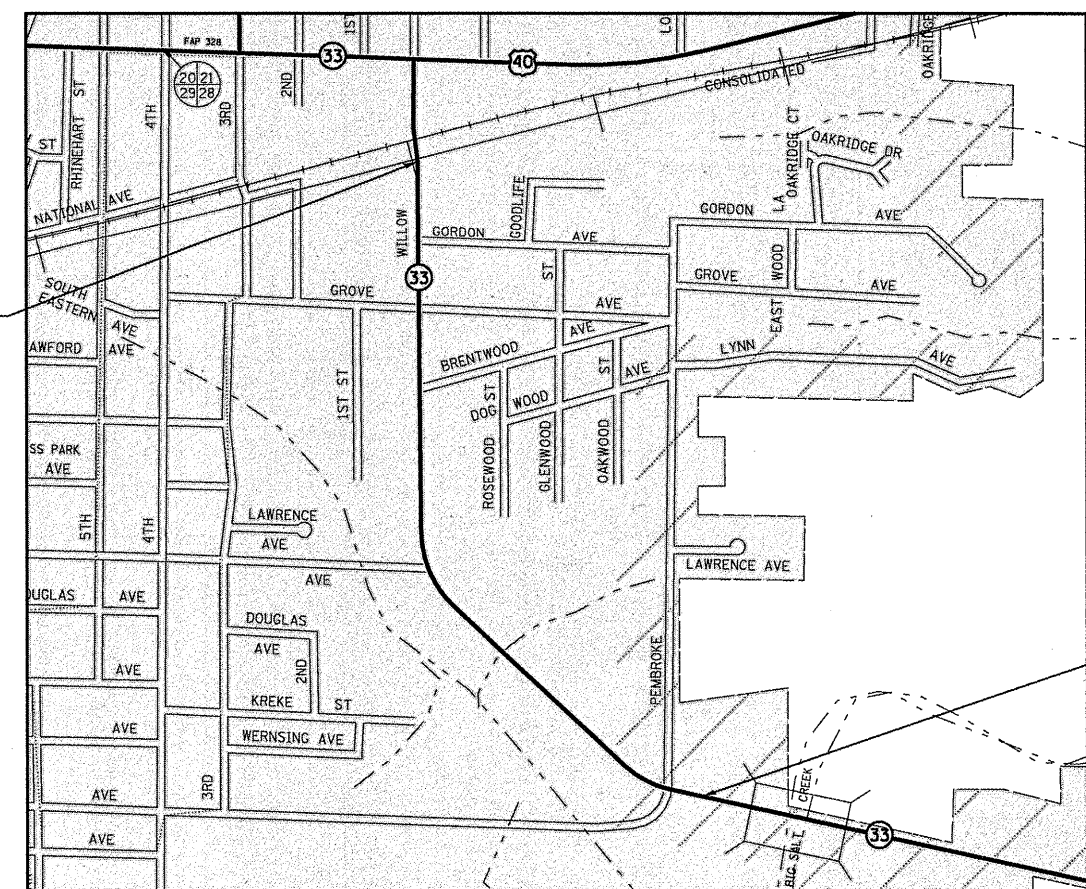
PROJECT ENDS:
STA. 141 + 94



FULL SIZE PLANS HAVE BEEN PREPARED USING STANDARD ENGINEERING SCALES. REDUCED SIZED PLANS WILL NOT CONFORM TO STANDARD SCALES. IN MAKING MEASUREMENTS ON REDUCED PLANS, THE ABOVE SCALES MAY BE USED.

J.U.L.I.E.
JOINT UTILITY LOCATION INFORMATION FOR EXCAVATION
1-800-892-0123
OR 811

PROJECT ENGINEER: MARK DAUGHERTY
PROJECT MANAGER: BRIAN BIERMAN
PHONE: (217)-342-8313
CONTRACT NO. 74541



GROSS LENGTH = 4147 FT. = 0.79 MILE
NET LENGTH = 4147 FT. = 0.79 MILE

STATE OF ILLINOIS
DEPARTMENT OF TRANSPORTATION
DIVISION OF HIGHWAYS

SUBMITTED Dec 14 2011
Roger L. Dankell
DEPUTY DIRECTOR OF HIGHWAYS/REGION ENGINEER

Feb 3 2012
John D. Baranzelli, P.E.
acting ENGINEER OF DESIGN AND ENVIRONMENT

Feb 3 2012
William R. Foley
acting DIRECTOR OF HIGHWAYS/CHIEF ENGINEER

**PRINTED BY THE AUTHORITY
OF THE STATE OF ILLINOIS**

GENERAL NOTES

SHORT-TERM PAVEMENT MARKING SHALL BE APPLIED AS FOLLOWS:
 TEMPORARY TAPE SHALL BE USED ON THE SURFACE COURSE AND PAINT SHALL BE USED ON THE MILLED SURFACE.

THE TOTAL QUANTITY OF WET REFLECTIVE THERMOPLASTIC PAVEMENT MARKING - LINE 4" CONSISTS OF 7,357 FEET OF YELLOW.

THE TOTAL QUANTITY OF WET REFLECTIVE THERMOPLASTIC PAVEMENT MARKING - LINE 6" CONSISTS OF 147 FEET OF WHITE.

THE TOTAL QUANTITY OF WET REFLECTIVE THERMOPLASTIC PAVEMENT MARKING - LINE 12" CONSISTS OF 390 FEET OF YELLOW.

THE TOTAL QUANTITY OF WET REFLECTIVE THERMOPLASTIC PAVEMENT MARKING - LINE 24" CONSISTS OF 75 FEET OF WHITE.

THE TOTAL QUANTITY OF WET REFLECTIVE THERMOPLASTIC PAVEMENT MARKING - LETTERS AND SYMBOLS CONSISTS OF 108 SQ FT OF WHITE.

THE TOTAL QUANTITY OF RAISED REFLECTIVE PAVEMENT MARKERS CONSISTS OF 69 TWO-WAY AMBER, 44 ONE-WAY AMBER AND 4 ONE-WAY CRYSTAL MARKERS.

THE HMA SURFACE REMOVAL AND RESURFACING SHALL BE DONE IN A MANNER THAT DOES NOT RESULT IN A GREATER ELEVATION DIFFERENTIAL BETWEEN OPEN LANES THAN ALLOWED BY ARTICLE 701.07 OF THE STANDARD SPECIFICATIONS.

MANHOLES, VALVE VAULTS AND OTHER APPURTENANCES EXPOSED BY THE HOT-MIX ASPHALT SURFACE REMOVAL SHALL BE TEMPORARILY RAMPED AS DIRECTED BY THE ENGINEER. THE INSTALLATION AND SUBSEQUENT REMOVAL OF TEMPORARY RAMPS SHALL NOT BE PAID FOR SEPARATELY BUT SHALL BE CONSIDERED AS INCLUDED IN THE COST OF HOT-MIX ASPHALT SURFACE REMOVAL, 2 1/4".

THE CONTRACTOR SHALL PROVIDE INTERNET ACCESS TO THE HOT-MIX ASPHALT PLANT QUALITY CONTROL LAB SO THAT HOT-MIX ASPHALT PLANT REPORTS CAN BE E-MAILED TO THE DISTRICT HEADQUARTERS. THIS WORK SHALL BE INCLUDED IN THE COST OF ALL HOT-MIX ASPHALT ITEMS.

THE CONTRACTOR SHALL USE EITHER RC-70 OR AN EMULSIFIED POLYMER PRIME SS-1HP OR SS-1H FOR THE PAY ITEM BITUMINOUS MATERIALS (PRIME COAT).

THE PAY ITEM TEMPORARY RAMP HAS BEEN INCLUDED FOR THE CONSTRUCTION OF TEMPORARY RAMPS IN ACCORDANCE WITH ARTICLE 406.08 OF THE STANDARD SPECIFICATIONS. THE CONTRACT UNIT PRICE PER SQUARE YARD FOR TEMPORARY RAMP SHALL INCLUDE BOTH THE INSTALLATION AND THE REMOVAL OF THE RAMPS.

THE FOLLOWING MIXTURE REQUIREMENTS ARE APPLICABLE TO THIS PROJECT:

APPLICATION	AC/PG	DESIGN AIR VOIDS	MIXTURE COMPOSITION	FRICTION AGGREGATE
SURFACE COURSE	PG 64-22	4.0% @ N=90	IL - 9.5	MIXTURE D
LEVEL BINDER	PG 64-22	4.0% @ N=90	IL - 9.5	N/A
PAVEMENT PATCHING	PG 64-22	4.0% @ N=70	IL - 19.0	N/A

INDEX OF SHEETS

SHEET NO	TITLE
1	COVER SHEET
2	INDEX OF SHEETS AND GENERAL NOTES
3	SUMMARY OF QUANTITIES
4	TYPICAL CROSS SECTION AND PAVING DETAILS
5	SCHEDULE OF QUANTITIES
6-9	PLAN SHEETS
10-13	STRIPING DETAILS
14	SURVEY MARKER VAULT

THE FOLLOWING STANDARDS ARE A PART OF THESE PLANS AND ARE INCLUDED FOLLOWING THE LAST NUMBERED SHEET OF THE PLANS.

STD. NO.	DESCRIPTION
000001-06	STANDARD SYMBOLS, ABBREVIATIONS AND PATTERNS
001006	DECIMAL OF AN INCH AND OF A FOOT
442201-03	CLASS C AND D PATCHES
701006-03	OFF-RD OPERATIONS, 2L, 2W, 15' TO 24" FROM THE EDGE OF PAVEMENT
701311-03	LANE CLOSURE, 2L, 2W MOVING OPERATIONS-DAY ONLY
701501-06	URBAN LANE CLOSURE, 2L, 2W, UNDIVIDED
701901-02	TRAFFIC CONTROL DEVICES
780001-03	TYPICAL PAVEMENT MARKINGS
781001-03	TYPICAL APPLICATIONS RAISED REFLECTIVE PAVEMENT MARKERS

FILE NAME = #FILE#	USER NAME = #USER#	DESIGNED - DRAWN -	REVISED - REVISED -	STATE OF ILLINOIS DEPARTMENT OF TRANSPORTATION	GENERAL NOTES AND INDEX OF SHEETS				F.A.P. RTE.	SECTION	COUNTY	TOTAL SHEETS	SHEET NO.		
	PLOT SCALE = #SCALE#	CHECKED -	REVISED -		SCALE: NA	SHEET 1	OF 1	SHEETS	STA.	TO STA.	95	7Z RS-2	EFFINGHAM	14	2
	PLOT DATE = #DATE#	DATE -	REVISED -		CONTRACT NO. 74541										
ILLINOIS FED. AID PROJECT															

SUMMARY OF QUANTITIES			URBAN TOTAL QUANTITIES	CONSTRUCTION TYPE CODE		
CODE NO	ITEM	UNIT		80% FED 20% STATE 0005		
Z0049799	PROTECTING OR RESETTING SURVEY MARKERS	EACH	3	3		
40600100	BITUMINOUS MATERIALS (PRIME COAT)	GALLON	2614	2614		
40600300	AGGREGATE (PRIME COAT)	TON	52	52		
40600645	LEVELING BINDER (MACHINE METHOD), N90	TON	538	538		
40600985	PORTLAND CEMENT CONCRETE SURFACE REMOVAL - BUTT JOINT	SO YD	311	311		
40600990	TEMPORARY RAMP	SO YD	75	75		
40603345	HOT-MIX ASPHALT SURFACE COURSE, MIX "D", N90	TON	1094	1094		
44000158	HOT-MIX ASPHALT SURFACE REMOVAL, 2 1/4"	SO YD	13131	13131		
44201773	CLASS D PATCHES, TYPE I, 11 INCH	SO YD	8	8		
44201777	CLASS D PATCHES, TYPE II, 11 INCH	SO YD	72	72		
44201781	CLASS D PATCHES, TYPE III, 11 INCH	SO YD	43	43		
44201783	CLASS D PATCHES, TYPE IV, 11 INCH	SO YD	551	551		
67100100	MOBILIZATION	L SUM	1	1		

SUMMARY OF QUANTITIES			URBAN TOTAL QUANTITIES	CONSTRUCTION TYPE CODE		
CODE NO	ITEM	UNIT		80% FED 20% STATE 0005		
70102620	TRAFFIC CONTROL AND PROTECTION, STANDARD 701501	L SUM	1	1		
70300100	SHORT TERM PAVEMENT MARKING	FOOT	1436	1436		
70301000	WORK ZONE PAVEMENT MARKING REMOVAL	SO FT	239	239		
* 78100100	RAISED REFLECTIVE PAVEMENT MARKER	EACH	117	117		
X4060995	TEMPORARY RAMP, SPECIAL	SO YD	500	500		
* X7801000	WET REFLECTIVE THERMOPLASTIC PAVEMENT MARKING - LETTERS AND SYMBOLS	SO FT	108	108		
* X7801004	WET REFLECTIVE THERMOPLASTIC PAVEMENT MARKING - LINE 4"	FOOT	7357	7357		
* X7801006	WET REFLECTIVE THERMOPLASTIC PAVEMENT MARKING - LINE 6"	FOOT	147	147		
* X7801012	WET REFLECTIVE THERMOPLASTIC PAVEMENT MARKING - LINE 12"	FOOT	390	390		
* X7801024	WET REFLECTIVE THERMOPLASTIC PAVEMENT MARKING - LINE 24"	FOOT	75	75		
Z0070202	SURVEY MARKER VAULT	EACH	3	3		

*SPECIALTY ITEM

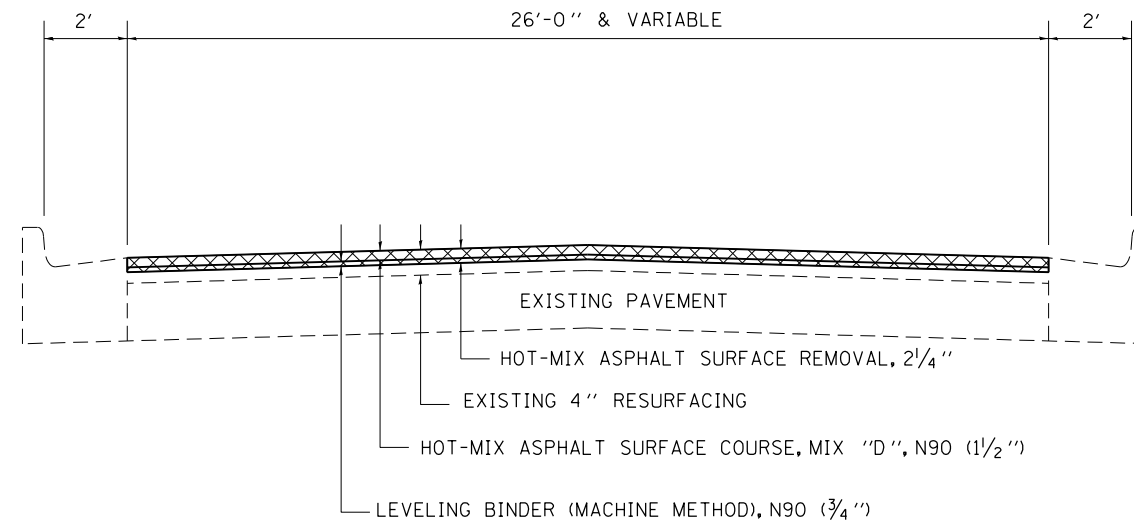
FILE NAME =	USER NAME = #USER#	DESIGNED -	REVISED -
#FILE#		DRAWN -	REVISED -
	PLOT SCALE = #SCALE#	CHECKED -	REVISED -
	PLOT DATE = #DATE#	DATE -	REVISED -

STATE OF ILLINOIS
DEPARTMENT OF TRANSPORTATION

SUMMARY OF QUANTITIES

SCALE: NA SHEET 1 OF 1 SHEETS STA. TO STA.

F.A.P. RTE.	SECTION	COUNTY	TOTAL SHEETS	SHEET NO.
95	72 RS-2	EFFINGHAM	14	3
CONTRACT NO. 74541				
ILLINOIS FED. AID PROJECT				

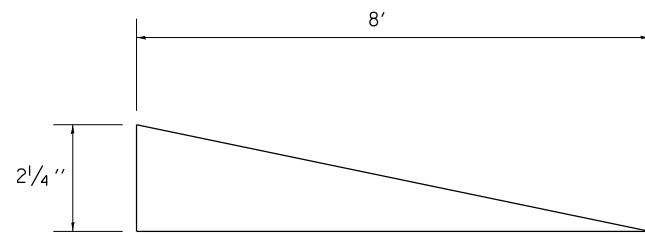


 HOT-MIX ASPHALT SURFACE REMOVAL, 2 1/4"

TYPICAL CROSS SECTION

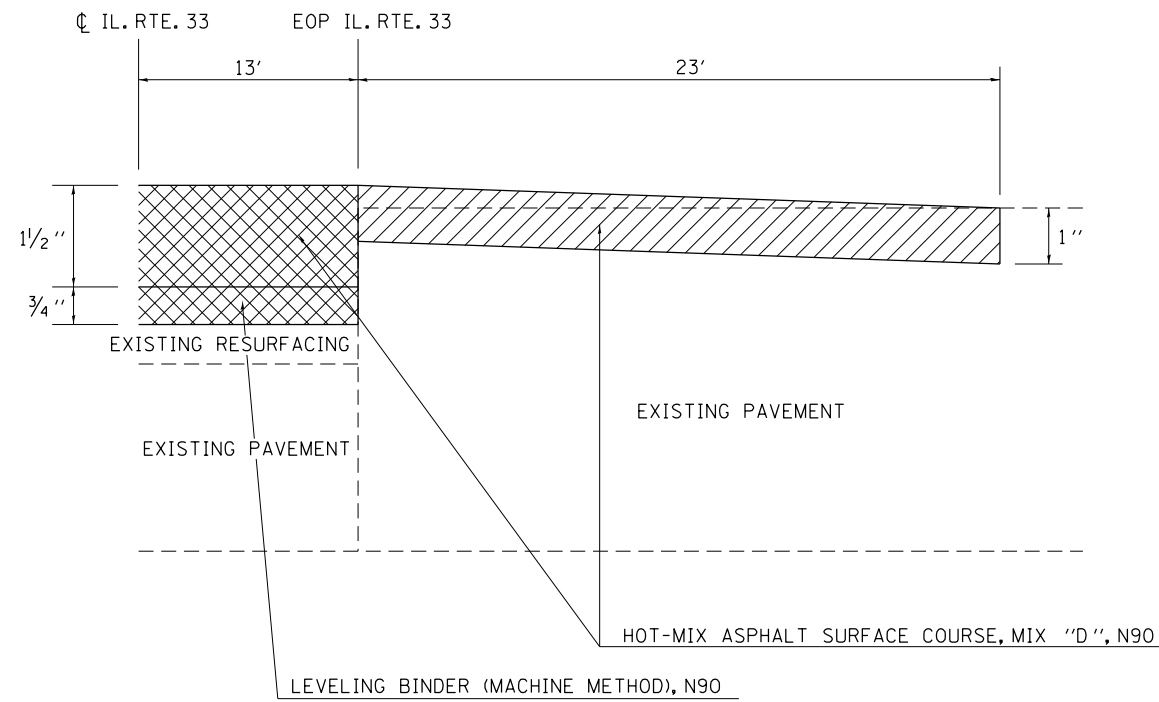
- STA 100+47 TO STA 118+01 (26')
- STA 118+01 TO STA 120+86 (26' TO 36')
- STA 120+86 TO STA 125+21 (36')
- STA 125+21 TO STA 128+79 (36' TO 26')
- STA 128+79 TO STA 141+94 (26')

NOTE: DRAWINGS NOT TO SCALE





TEMPORARY RAMP DETAIL

- STA. 100+47 TO STA. 100+55
- STA. 141+86 TO STA. 141+94



E. WABASH AVE. RESURFACING DETAIL

-  HOT-MIX ASPHALT SURFACE REMOVAL, 2 1/4"
-  PORTLAND CEMENT CONCRETE SURFACE REMOVAL - BUTT JOINT

STRIPING SCHEDULE

STATION TO STATION	LENGTH	WET REFLECTIVE THERMOPLASTIC PAVEMENT MARKING - LINE 4"	WET REFLECTIVE THERMOPLASTIC PAVEMENT MARKING - LINE 6"	WET REFLECTIVE THERMOPLASTIC PAVEMENT MARKING - LINE 12"	WET REFLECTIVE THERMOPLASTIC PAVEMENT MARKING - LINE 24"	WET REFLECTIVE THERMOPLASTIC PAVEMENT MARKING - LETTERS AND SYMBOLS	SHORT TERM PAVEMENT MARKING	WORK ZONE PAVEMENT MARKING REMOVAL	RAISED REFLECTIVE PAVEMENT MARKER
		FEET	FOOT	FOOT	FOOT	FOOT	SO FT	FOOT	SO FT
100+47 TO 102+00	153	306	-	-	13	-	187	31	2
102+00 TO 103+95	195	244	-	-	26	61	39	7	2
103+95 TO 115+07	1112	278	-	-	-	-	222	37	14
115+07 TO 117+86	279	349	-	-	-	-	56	9	3
117+86 TO 118+01	15	30	-	-	-	-	3	1	6
118+01 TO 121+20	319	1276	-	146	-	-	64	11	20
121+20 TO 121+73	53	-	-	-	36	-	432	72	-
121+73 TO 123+20	147	294	147	-	-	47	59	10	11
123+20 TO 123+69	49	98	-	-	-	-	10	2	2
123+69 TO 128+44	475	1900	-	244	-	-	95	16	24
128+44 TO 140+37	1193	2386	-	-	-	-	239	40	30
140+37 TO 141+94	157	196	-	-	-	-	31	5	2
TOTALS:		7357	147	390	75	108	1436	239	117

PAVEMENT SCHEDULE

STATION TO STATION	LENGTH	WIDTH	BITUMINOUS MATERIALS (PRIME COAT)	AGGREGATE (PRIME COAT)	TEMPORARY RAMP	TEMPORARY RAMP, SPECIAL	PORTLAND CEMENT CONCRETE SURFACE REMOVAL - BUTT JOINT	HOT-MIX ASPHALT SURFACE REMOVAL, 2 1/4"	HOT-MIX ASPHALT SURFACE COURSE, MIX "D", N90	LEVELING BINDER (MACHINE METHOD), N90
US 51	FEET	FEET	GAL	TON	SO YD	SO YD	SO YD	SO YD	TON	TON
100+47 TO 118+01	1754	26	1013	20.3	38	271	-	5067	426	213
118+01 TO 120+86	285	26-36	196	3.9	-	34	-	982	82	41
120+86 TO 125+21	435	36	348	7.0	-	74	-	1740	146	73
125+21 TO 128+79	358	36-26	247	4.9	-	41	-	1233	104	52
128+79 TO 141+94	1315	26	760	15.2	38	80	-	3799	319	160
E. WABASH AVE.	23	75-190	50	1	-	-	311	-	17	-
TOTALS:			2614	52	75	500	311	12821	1094	538

SURVEY MARKER VAULT

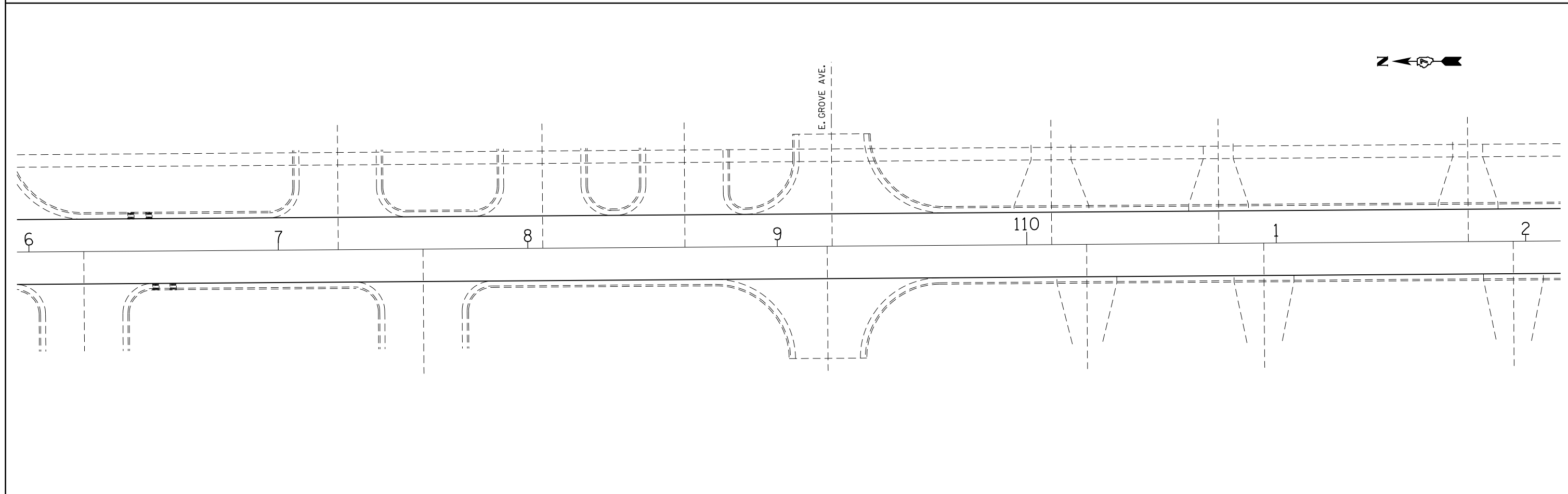
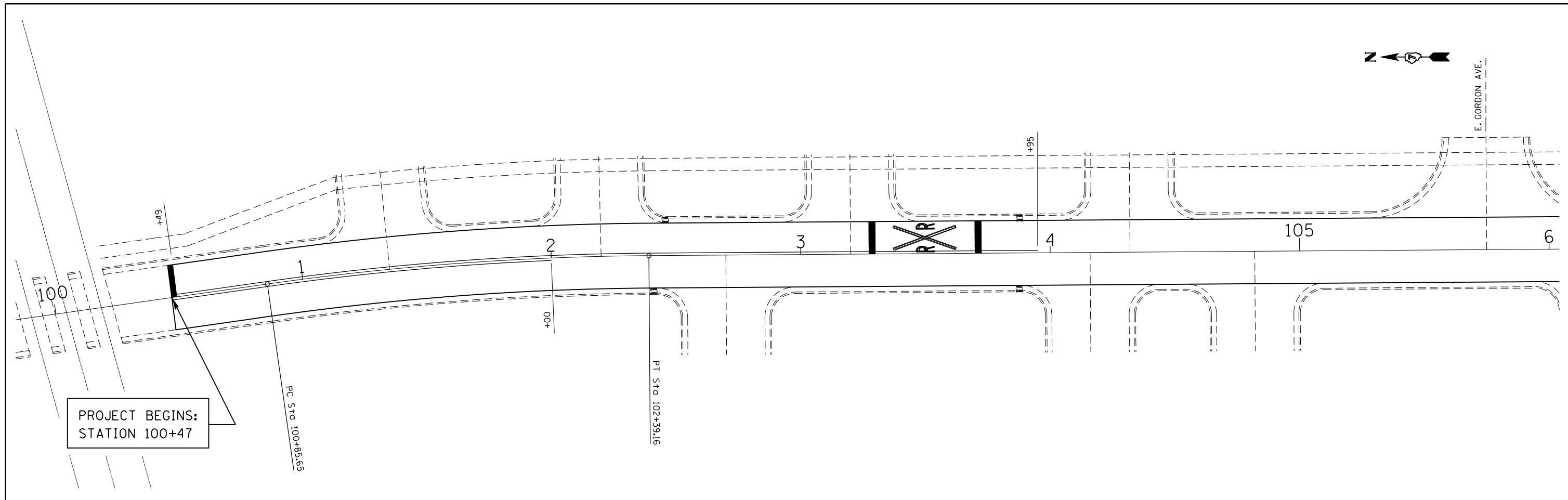
LOCATION	DESCRIPTION	EACH
P. T. 102+39.16	BRASS DISK	1
P. C. 119+31.26	BRASS DISK	1
P. C. 134+85.56	BRASS DISK	1
TOTALS:		3

PATCHING SCHEDULE

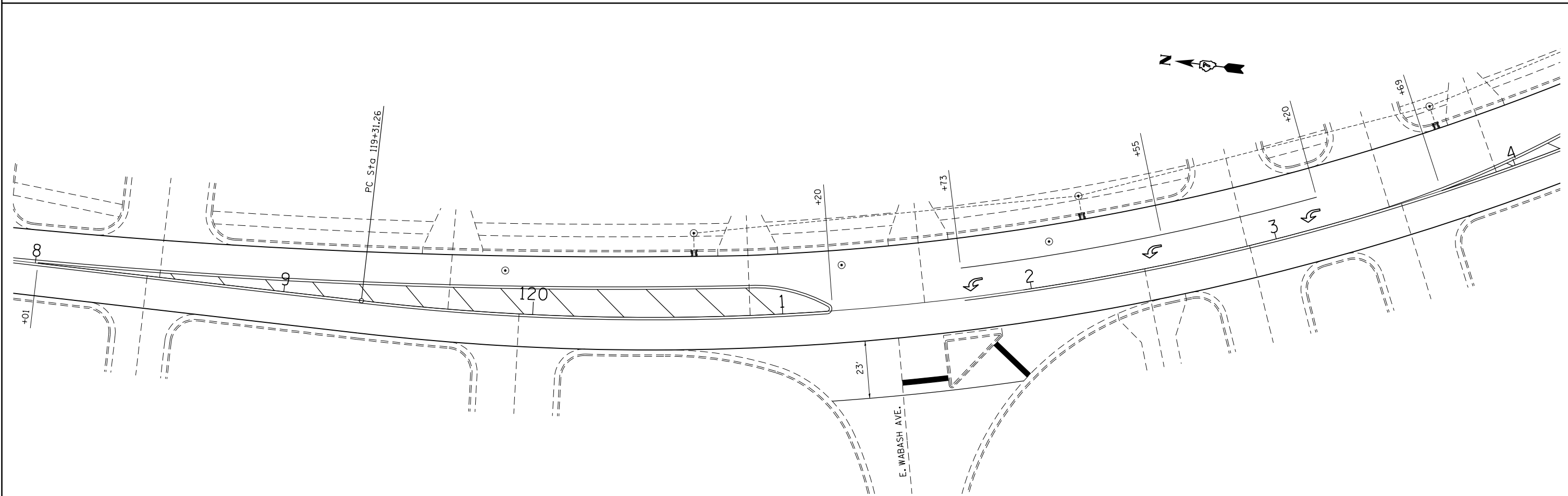
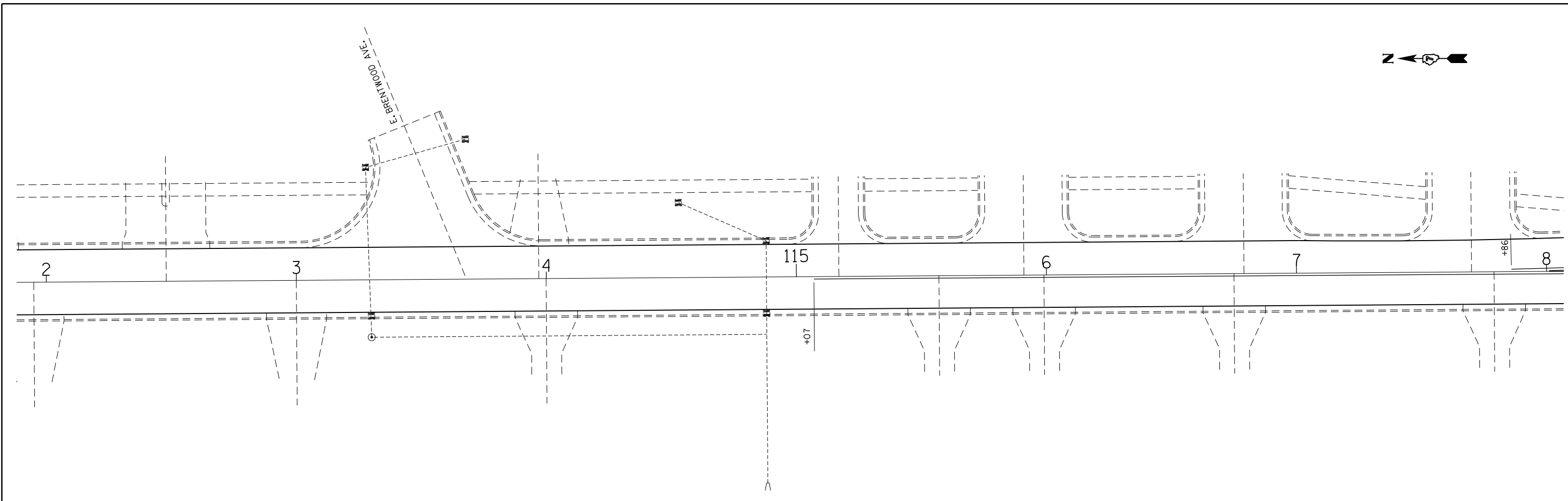
LANE	CLASS D PATCHES, TYPE I, 11 INCH	CLASS D PATCHES, TYPE II, 11 INCH	CLASS D PATCHES, TYPE III, 11 INCH	CLASS D PATCHES, TYPE IV, 11 INCH
	SO YD	SO YD	SO YD	SO YD
SOUTHBOUND	-	38	-	312
NORTHBOUND	8	35	43	239
TOTALS:	8	72	43	551

PROTECTING OR RESETTING SURVEY MARKERS

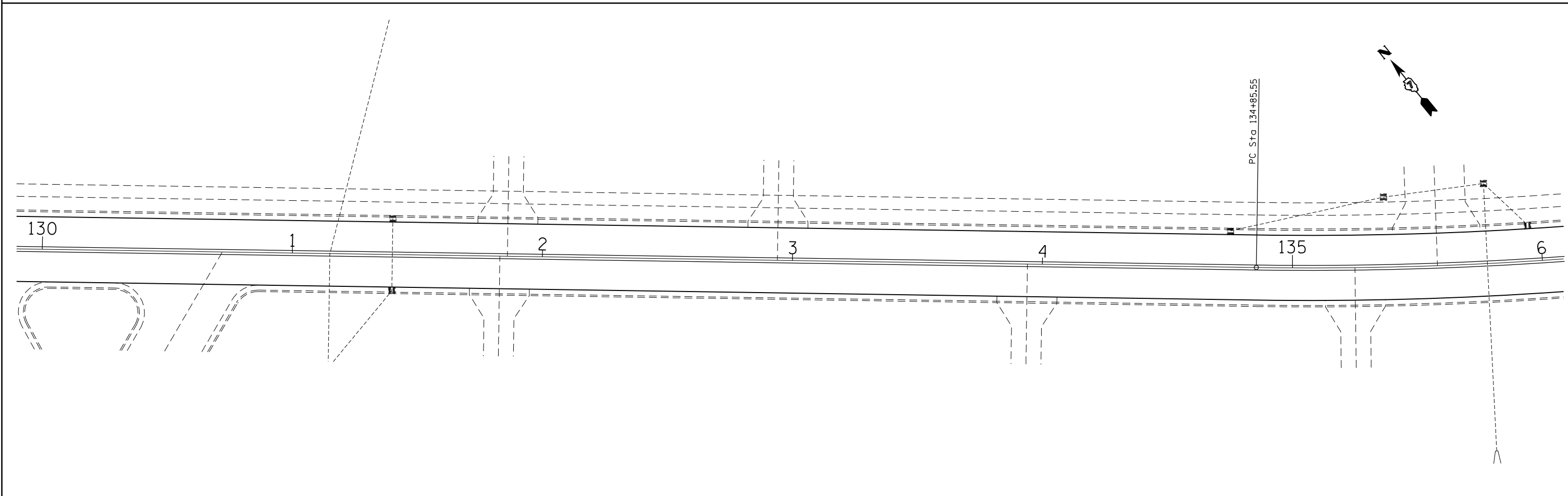
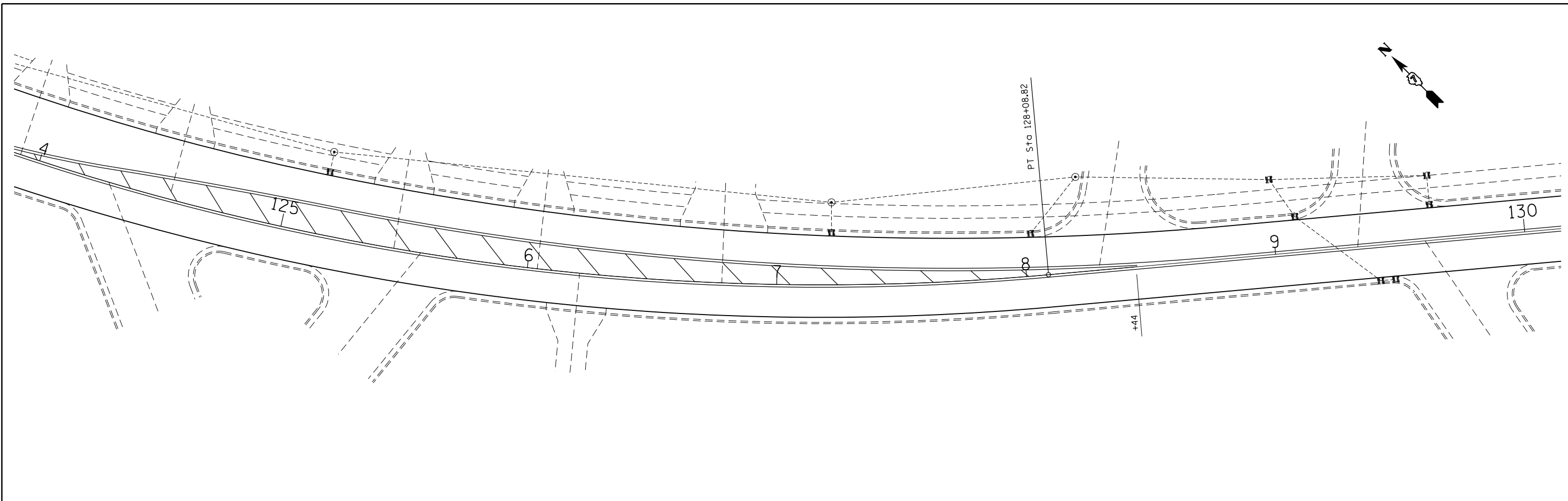
LOCATION	DESCRIPTION	EACH
P. T. 102+39.16	BRASS DISK	1
P. C. 119+31.26	BRASS DISK	1
P. C. 134+85.56	BRASS DISK	1
TOTALS:		3



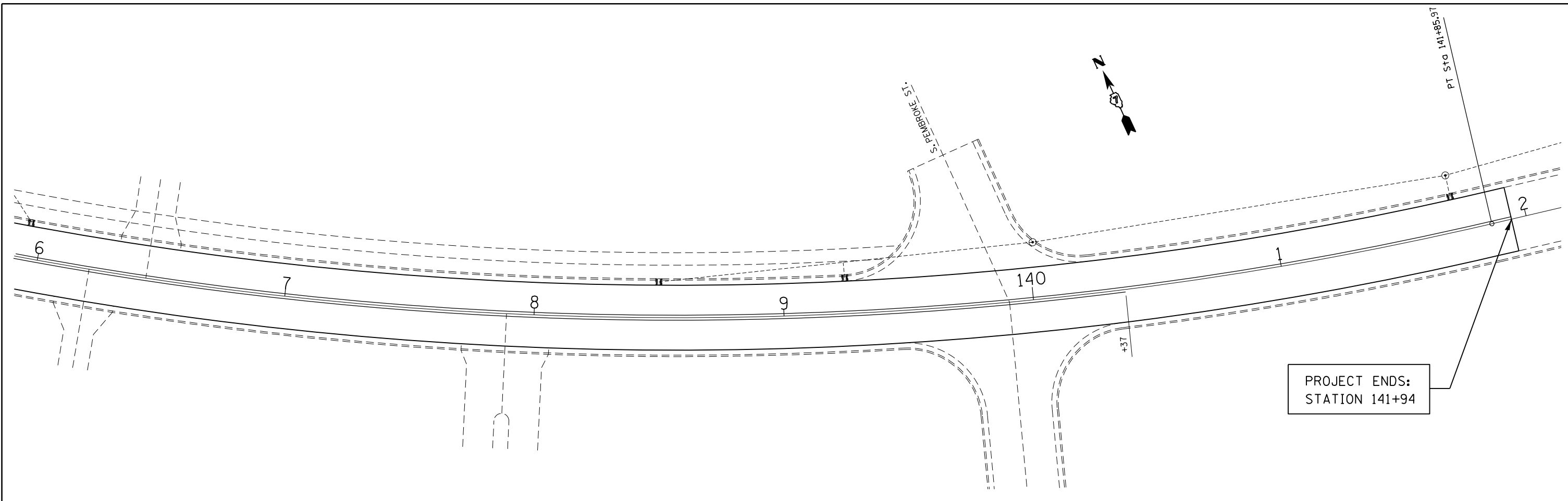
FILE NAME = *FILE*	USER NAME = *USER*	DESIGNED -	REVISED -	STATE OF ILLINOIS DEPARTMENT OF TRANSPORTATION	PLAN			F.A.P. RTE.	SECTION	COUNTY	TOTAL SHEETS	SHEET NO.
	PLOT SCALE = *SCALE*	CHECKED -	REVISED -		95	7Z RS-2	EFFINGHAM	14	6			
PLOT DATE = *DATE*	DATE -	REVISED -	REVISED -		SCALE: 20 SHEET 1 OF 4 SHEETS STA. 100+47 TO STA. 112+00			CONTRACT NO. 74541		ILLINOIS FED. AID PROJECT		



FILE NAME = *FILE*	USER NAME = *USER*	DESIGNED -	REVISED -	STATE OF ILLINOIS DEPARTMENT OF TRANSPORTATION	PLAN			F.A.P. RTE.	SECTION	COUNTY	TOTAL SHEETS	SHEET NO.
	PLOT SCALE = *SCALE*	DRAWN -	REVISED -		95	7Z RS-2	EFFINGHAM	14	7			
PLOT DATE = *DATE*	CHECKED -	REVISED -	SCALE: 20 SHEET 2 OF 4 SHEETS STA. 112+00 TO STA. 124+00			CONTRACT NO. 74541						
	DATE -	REVISED -	ILLINOIS FED. AID PROJECT									



FILE NAME = *FILE*	USER NAME = *USER*	DESIGNED -	REVISED -	STATE OF ILLINOIS DEPARTMENT OF TRANSPORTATION	PLAN			F.A.P. RTE. 95	SECTION 7Z RS-2	COUNTY EFFINGHAM	TOTAL SHEETS 14	SHEET NO. 8
	PLOT SCALE = *SCALE*	CHECKED -	REVISED -		SCALE: 20	SHEET 3	OF 4 SHEETS	STA. 124+00	TO STA. 136+00	CONTRACT NO. 74541		
PLOT DATE = *DATE*	DATE -	REVISED -	REVISED -		ILLINOIS FED. AID PROJECT							



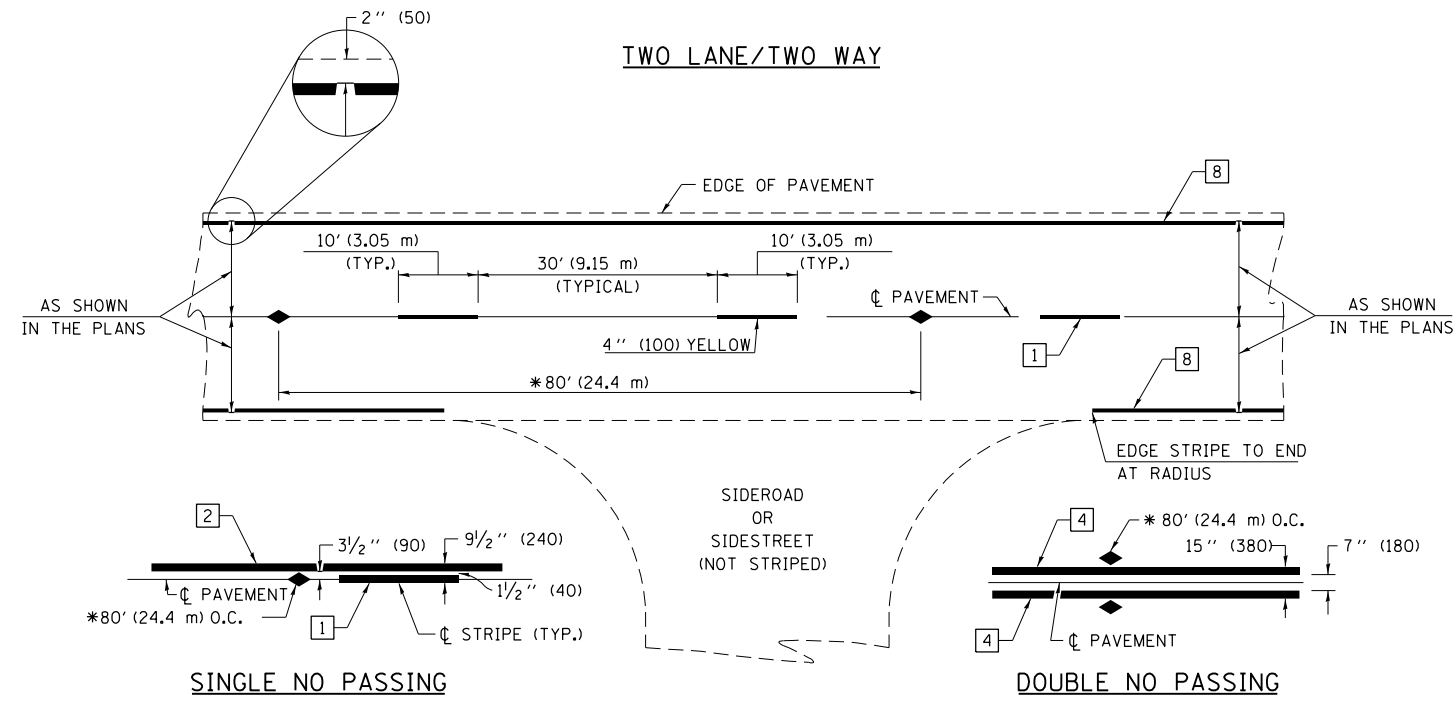
FILE NAME = *FILEL*	USER NAME = *USER*	DESIGNED -	REVISED -
		DRAWN -	REVISED -
	PLOT SCALE = *SCALE*	CHECKED -	REVISED -
	PLOT DATE = *DATE*	DATE -	REVISED -

**STATE OF ILLINOIS
DEPARTMENT OF TRANSPORTATION**

PLAN

SCALE: 20 SHEET 4 OF 4 SHEETS STA. 136+00 TO STA. 141+94

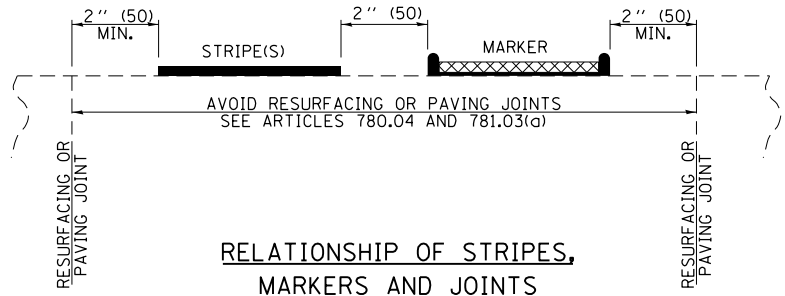
F.A.P. RTE.	SECTION	COUNTY	TOTAL SHEETS	SHEET NO.
95	7Z RS-2	EFFINGHAM	14	9
CONTRACT NO. 74541				
ILLINOIS FED. AID PROJECT				



* REDUCE TO 40' (12.2 m) O.C. ON CURVES WITH POSTED OR ADVISORY SPEEDS OF 45 mph (70 km/h) OR LESS.

PAVEMENT MARKING LEGEND

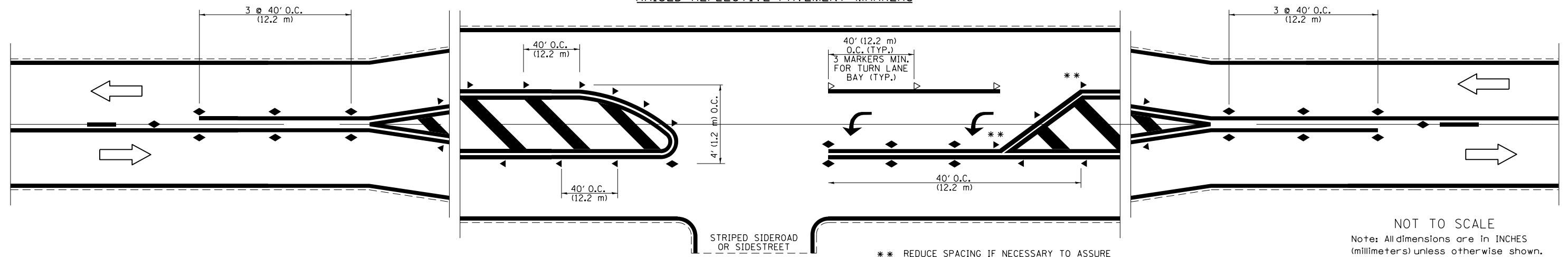
- 1 4" (100) SKIP-DASH (YELLOW)
 - 2 4" (100) SOLID (YELLOW)
 - 3 12" (300) DIAGONAL (YELLOW)
 - 4 4" (100) DOUBLE YELLOW (NARROW)
 - 5 12" (300) SOLID WHITE
 - 6 RESERVED
 - 7 6" (150) SKIP-DASH (WHITE)
 - 8 4" (100) SOLID (WHITE)
 - 9 12" (300) DIAGONAL (WHITE)
 - 10 6" (150) SOLID (WHITE)
 - 11 24" (600) STOP BAR (WHITE)
 - 12 8" (200) SOLID (WHITE)
 - 13 4" (100) PARKING WHITE
-



TYPICAL PAVEMENT MARKERS LEGEND

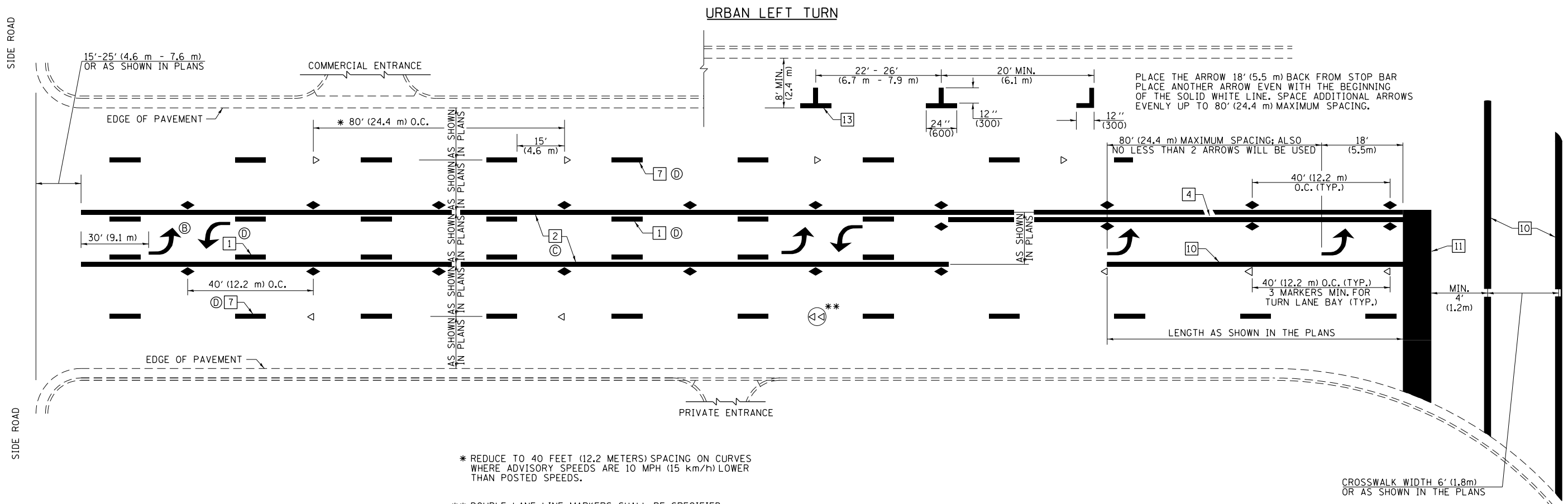
- ◆ TWO-WAY AMBER MARKER
- ▶ ONE-WAY AMBER MARKER
- ▷ ONE-WAY CRYSTAL MARKER

RAISED REFLECTIVE PAVEMENT MARKERS



NOT TO SCALE
 Note: All dimensions are in INCHES (millimeters) unless otherwise shown.

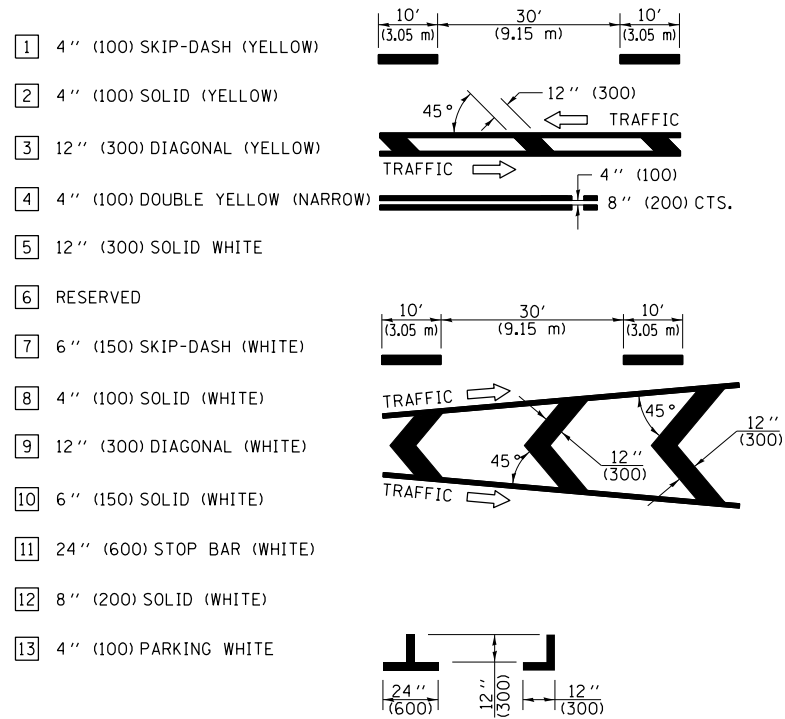
DISTRICT 7 DETAIL NO. 7800001



* REDUCE TO 40 FEET (12.2 METERS) SPACING ON CURVES WHERE ADVISORY SPEEDS ARE 10 MPH (15 km/h) LOWER THAN POSTED SPEEDS.

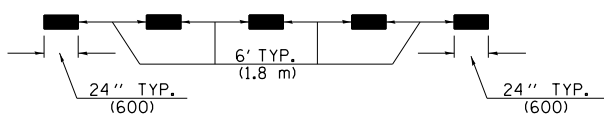
** DOUBLE LANE LINE MARKERS SHALL BE SPECIFIED AND SPACED AS SHOWN IN HIGHWAY STANDARD 781001 FOR MULTI-LANE DIVIDED AND UNDIVIDED HIGHWAYS.

PAVEMENT MARKING LEGEND

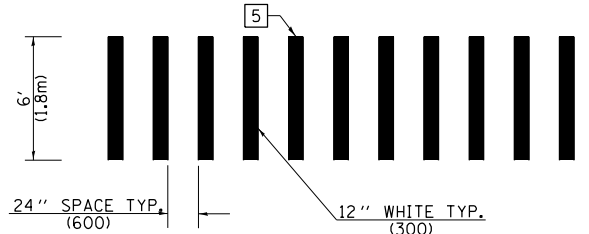


GENERAL NOTES

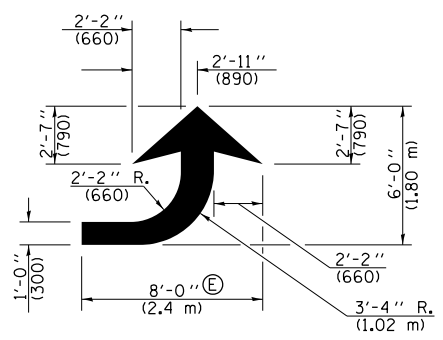
- TURN ARROW PAIRS SHALL BE PLACED AT 250' (75 m) INTERVALS AND SHALL BE EVENLY SPACED BETWEEN BOTH ENDS OF THE BIDIRECTIONAL LEFT TURN LANE. USE A MINIMUM OF TWO PAIRS PER BLOCK.
- THE SOLID YELLOW PAVEMENT MARKINGS [2] SHOULD GENERALLY START OR END NEAR THE RADIUS POINT OF EACH STREET RETURN EXCEPT WHERE ONE OR BOTH ENDS WOULD INCLUDE STOP BARS.
- THE SKIP-DASH PAVEMENT MARKINGS [1] OR [7] SHOULD BE CENTERED BETWEEN BOTH ENDS OF EACH CITY BLOCK AND SHALL BE PLACED SO THEY LINE UP ACROSS FROM EACH OTHER.
- USE LARGE ARROW SIZE FOR BOTH RURAL AND URBAN LOCATIONS. (SEE LAST PAGE OF SECTION 780x FOR SYMBOLS TABLE)
- LANE LINE EXTENSIONS SHALL BE THE SAME COLOR AND WIDTH AS THE LANE LINE BEING EXTENDED.



LANE LINE EXTENSIONS

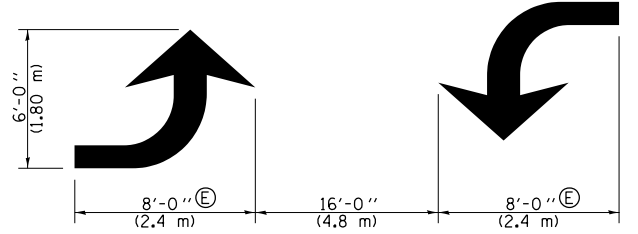


CROSSWALK DETAIL (DECATUR CITY LIMITS ONLY)



LEFT ARROW

REVERSE FOR RIGHT ARROW
AREA = 15.6 SQ. FT. (1.47 m²)
(WHITE)

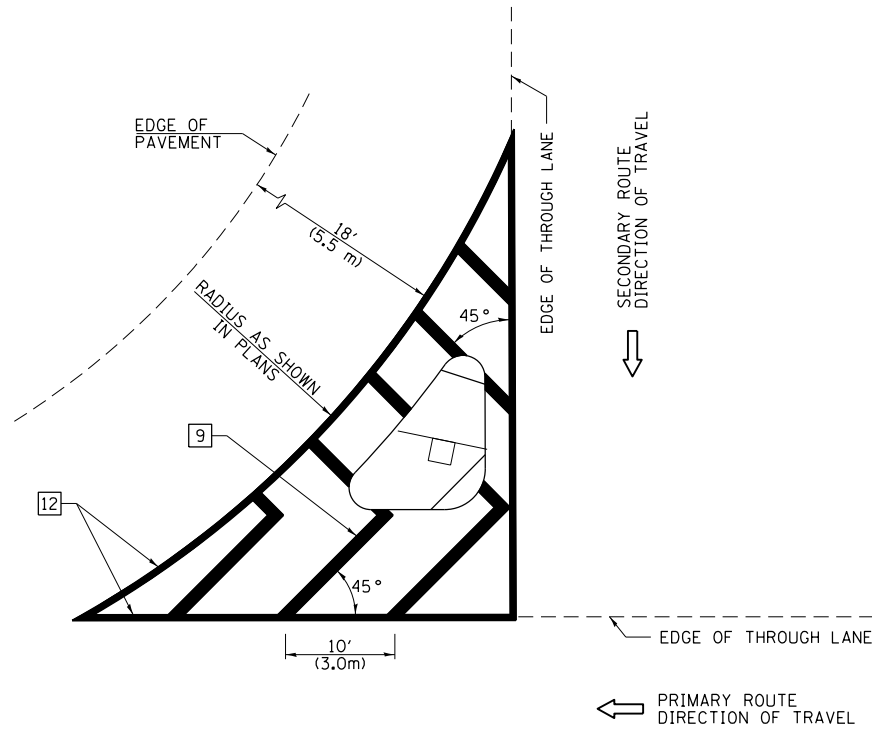


TYPICAL DOUBLE TURN ARROWS (WHITE)

NOT TO SCALE
Note: All dimensions are in INCHES (millimeters) unless otherwise shown.

FILE NAME =	USER NAME = \$USER*	DESIGNED -	REVISED -	STATE OF ILLINOIS DEPARTMENT OF TRANSPORTATION	PAVEMENT MARKING AND RAISED REFLECTIVE PAVEMENT MARKERS (RURAL & URBAN APPLICATIONS)			F.A.P. RTE.	SECTION	COUNTY	TOTAL SHEETS	SHEET NO.
*FILEL\$		DRAWN -	REVISED -					95	7Z RS-2	Effingham	14	11
	PLOT SCALE = \$SCALE*	CHECKED -	REVISED -					CONTRACT NO. 74541				
	PLOT DATE = \$DATE*	DATE -	REVISED -					ILLINOIS FED. AID PROJECT				

ISLAND

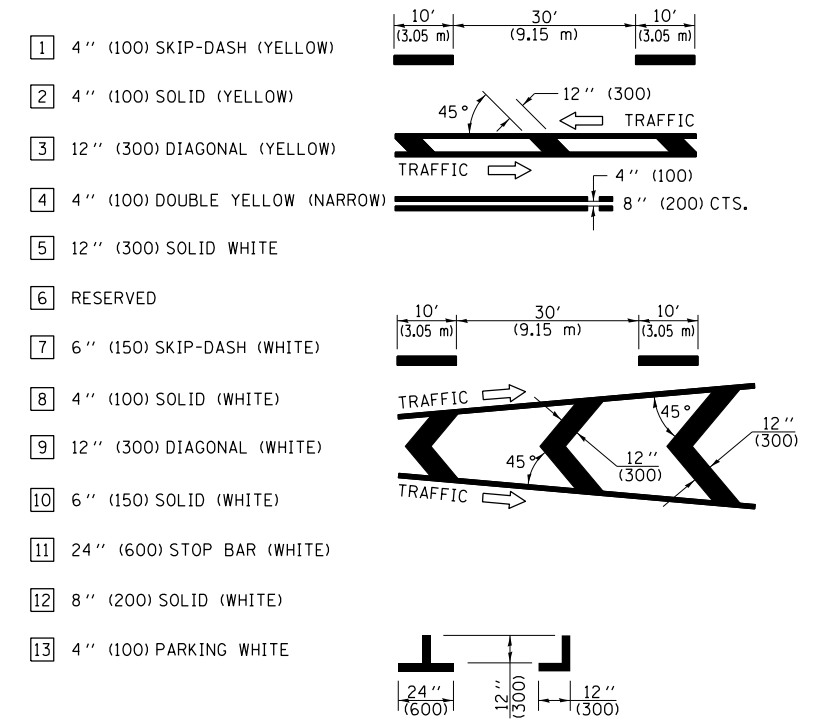


GENERAL NOTES

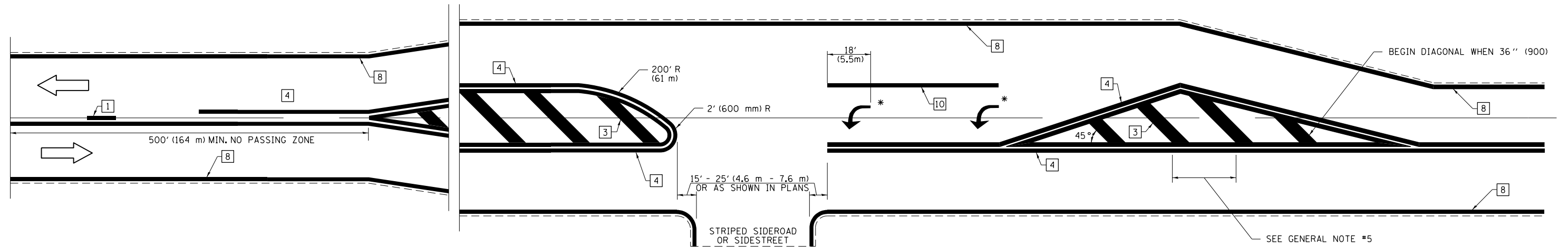
1. RAISED AND CORRUGATED MEDIANS SHALL BE OUTLINED WITH [2] IF PRESENT.
2. SOME OF THE INFORMATION INCLUDED WITH THIS DETAIL MAY NOT BE APPLICABLE TO THIS IMPROVEMENT.
3. PAVEMENT MARKINGS ARE TO BE EXTENDED THROUGH OMISSIONS WHEN APPLICABLE.
4. FINAL PAVEMENT MARKINGS SHALL BE IN PLACE PRIOR TO PLACING ANY RAISED REFLECTIVE PAVEMENT MARKERS.
5. THE FOLLOWING CRITERIA SHALL BE USED FOR SELECTING THE DIAGONAL PAVEMENT MARKING SPACING:

< 30 MPH (< 50 km/h)	15' (4.5 m)
30-45 MPH (50-75 km/h)	20' (6.0 m)
> 45 MPH (> 75 km/h)	30' (9.0 m)

PAVEMENT MARKING LEGEND



RURAL LEFT TURN STRIPING



* PLACE AN ARROW 18' (5.5 m) BACK FROM STOP BAR. PLACE ANOTHER ARROW EVEN WITH THE BEGINNING OF THE SOLID WHITE LINE. SPACE ADDITIONAL ARROWS EVENLY UP TO 80' (24.4 m) MAXIMUM SPACING. USE MINIMUM OF 2 ARROWS.

NOT TO SCALE
Note: All dimensions are in INCHES (millimeters) unless otherwise shown.

DISTRICT 7 DETAIL NO. 7800001

FILE NAME =	USER NAME = \$USER*	DESIGNED -	REVISED -
\$FILEL\$		DRAWN -	REVISED -
	PLOT SCALE = \$SCALE*	CHECKED -	REVISED -
	PLOT DATE = \$DATE*	DATE -	REVISED -

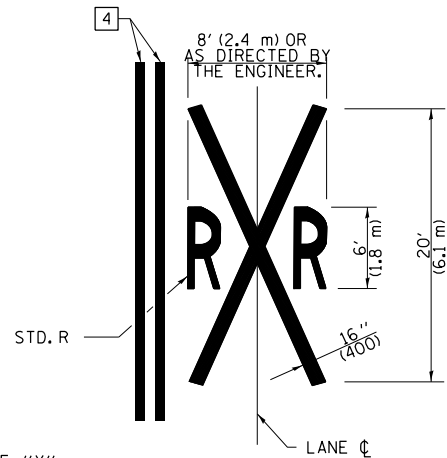
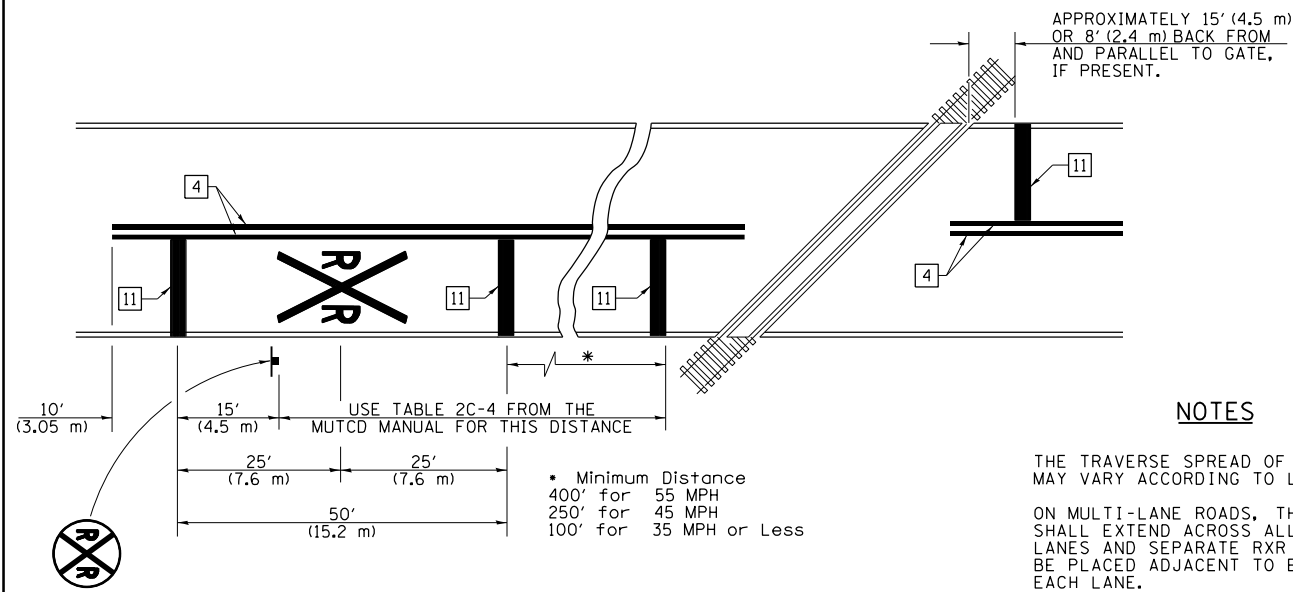
**STATE OF ILLINOIS
DEPARTMENT OF TRANSPORTATION**

**PAVEMENT MARKING AND RAISED REFLECTIVE PAVEMENT MARKERS
(RURAL & URBAN APPLICATIONS)**

SCALE: NA SHEET NO. 3 OF 4 SHEETS STA. TO STA.

F.A.P. RTE.	SECTION	COUNTY	TOTAL SHEETS	SHEET NO.
95	7Z RS-2	Effingham	14	12
CONTRACT NO. 74541			ILLINOIS FED. AID PROJECT	

PAVEMENT MARKINGS AT RAILROAD-HIGHWAY GRADE CROSSING



NOTES

THE TRAVERSE SPREAD OF THE "X" MAY VARY ACCORDING TO LANE WIDTH.

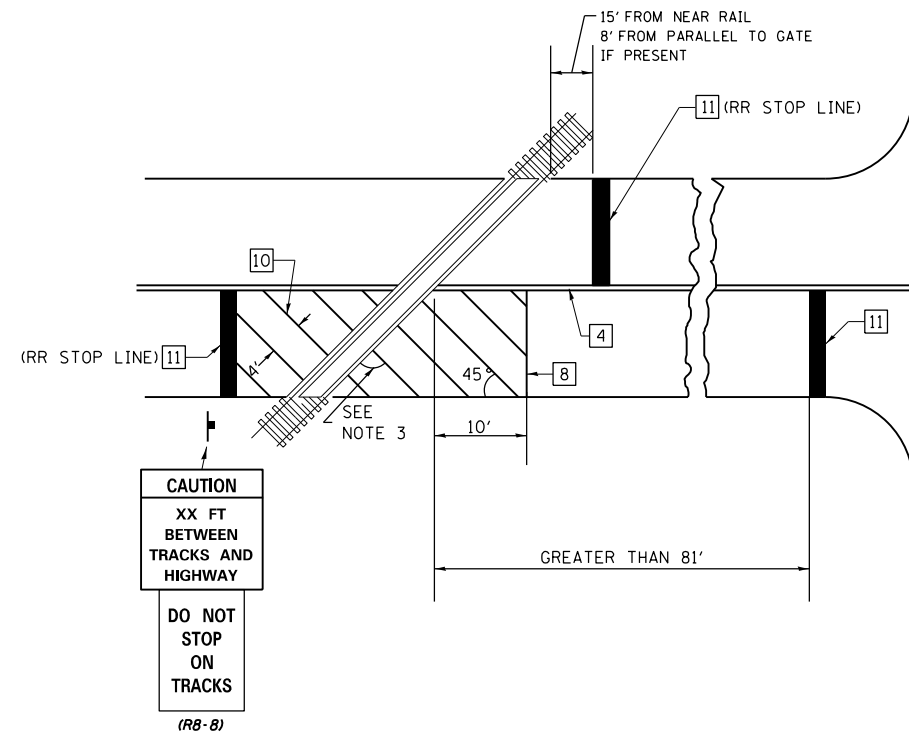
ON MULTI-LANE ROADS, THE STOP LINES SHALL EXTEND ACROSS ALL APPROACH LANES AND SEPARATE RXR SYMBOLS SHALL BE PLACED ADJACENT TO EACH OTHER IN EACH LANE.

WHEN THE PAVEMENT MARKING SYMBOL IS USED, A PORTION OF THE SYMBOL SHOULD BE LOCATED DIRECTLY ADJACENT TO THE ADVANCE WARNING SIGN (W10-1) AS PLACED BY TABLE II-1, CONDITION B OF THE MUTCD.

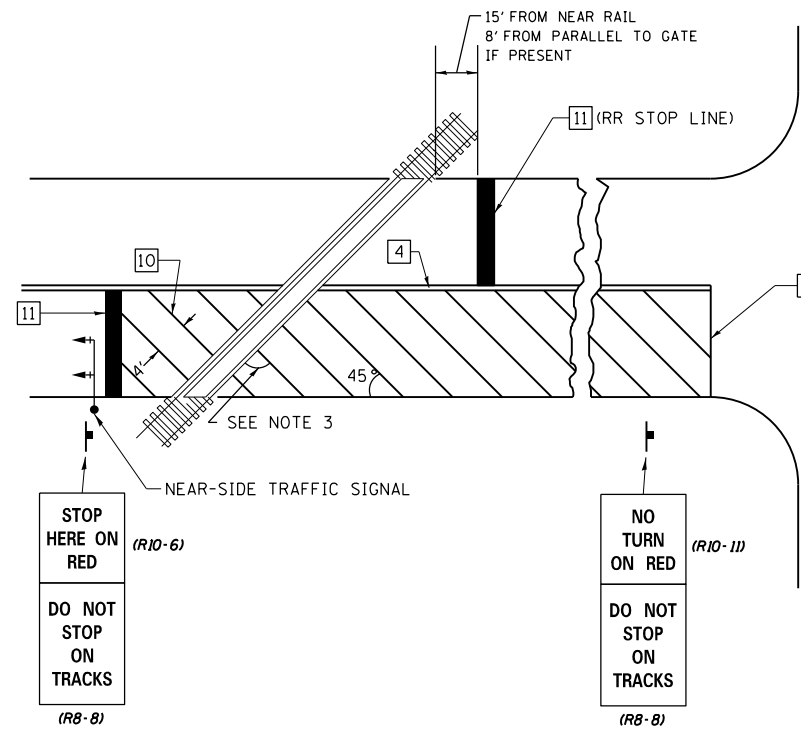
PAVEMENT MARKING LEGEND

- 1 4" (100) SKIP-DASH (YELLOW)
 - 2 4" (100) SOLID (YELLOW)
 - 3 12" (300) DIAGONAL (YELLOW)
 - 4 4" (100) DOUBLE YELLOW (NARROW)
 - 5 12" (300) SOLID WHITE
 - 6 RESERVED
 - 7 6" (150) SKIP-DASH (WHITE)
 - 8 4" (100) SOLID (WHITE)
 - 9 12" (300) DIAGONAL (WHITE)
 - 10 6" (150) SOLID (WHITE)
 - 11 24" (600) STOP BAR (WHITE)
 - 12 8" (200) SOLID (WHITE)
 - 13 4" (100) PARKING WHITE
-

RAILROAD CROSSING WITH INTERCONNECT ONLY



RAILROAD CROSSING WITH INTERCONNECT AND PRE-SIGNALS



GENERAL NOTES

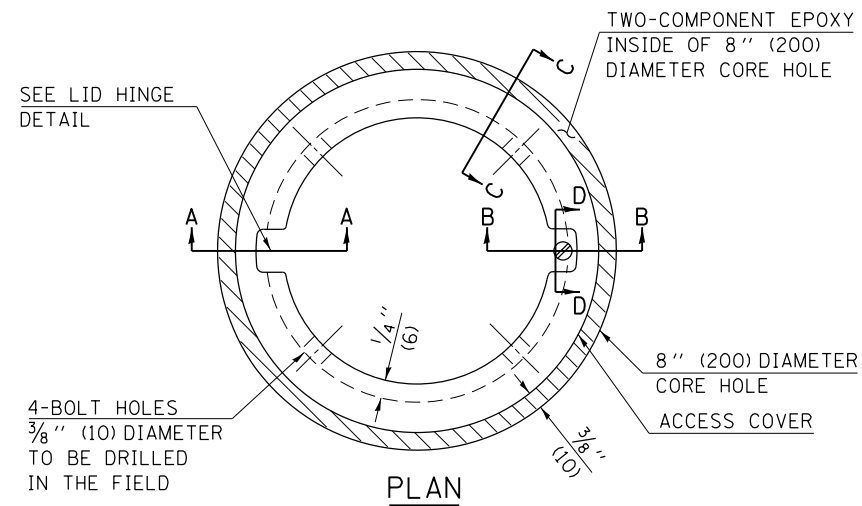
1. SUPPLEMENTAL PAVEMENT MARKINGS TO BE INSTALLED ONLY ON APPROACHES TO INTERSECTIONS CONTROLLED BY TRAFFIC SIGNALS WHICH ARE INTERCONNECTED WITH THE RAILROAD WARNING SIGNALS.
2. EXTEND PAVEMENT MARKINGS TO THE INTERSECTION ONLY WHERE NEAR-SIDE TRAFFIC SIGNALS ARE USED.
3. WHERE THE ANGLE BETWEEN THE DIAGONAL PAVEMENT MARKINGS AND THE TRACK WOULD BE LESS THAN 20°, THE PAVEMENT MARKINGS SHOULD BE PLACED IN THE OPPOSITE DIRECTION FROM THAT SHOWN.

SUPPLEMENTAL PAVEMENT MARKING TREATMENT FOR RAILROAD-HIGHWAY GRADE CROSSING

NOT TO SCALE
Note: All dimensions are in INCHES (millimeters) unless otherwise shown.

FILE NAME = *FILE*	USER NAME = *USER*	DESIGNED -	REVISED -	STATE OF ILLINOIS DEPARTMENT OF TRANSPORTATION	PAVEMENT MARKING AND RAISED REFLECTIVE PAVEMENT MARKERS (RURAL & URBAN APPLICATIONS)			F.A.P. RTE.	SECTION	COUNTY	TOTAL SHEETS	SHEET NO.
		DRAWN -	REVISED -					95	7Z RS-2	Effingham	14	13
		CHECKED -	REVISED -					CONTRACT NO. 74541				
		DATE -	REVISED -					ILLINOIS FED. AID PROJECT				
				SCALE: NA	SHEET NO. 4 OF 4 SHEETS	STA. TO STA.						

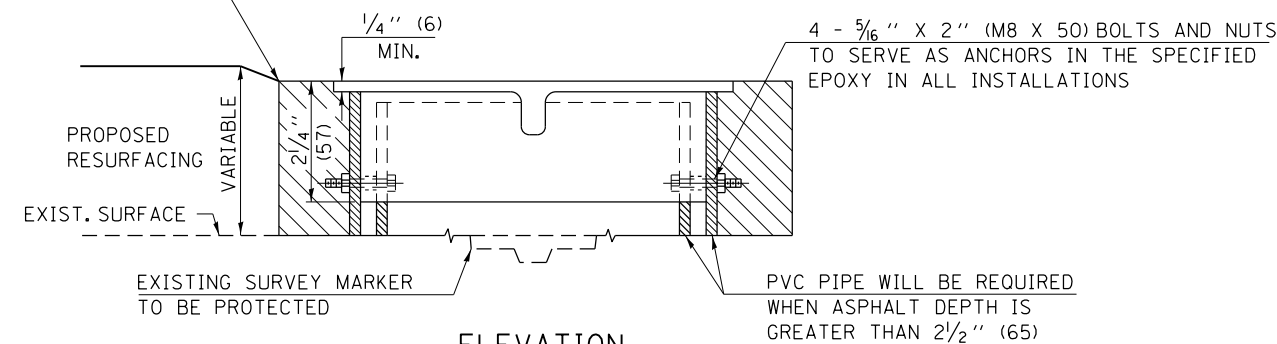
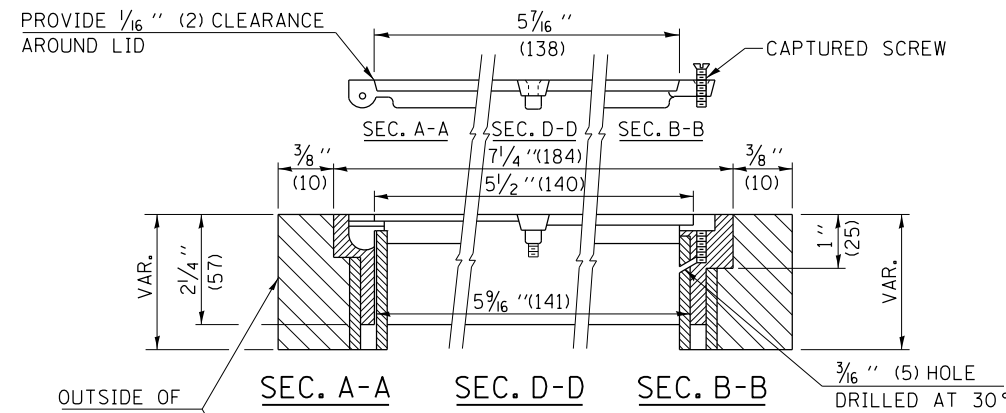
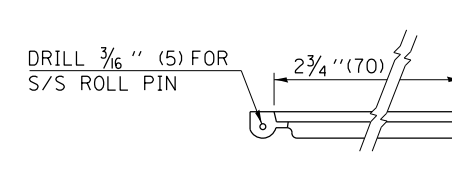
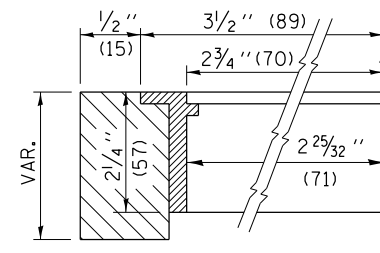
DISTRICT 7 DETAIL NO. 7800001



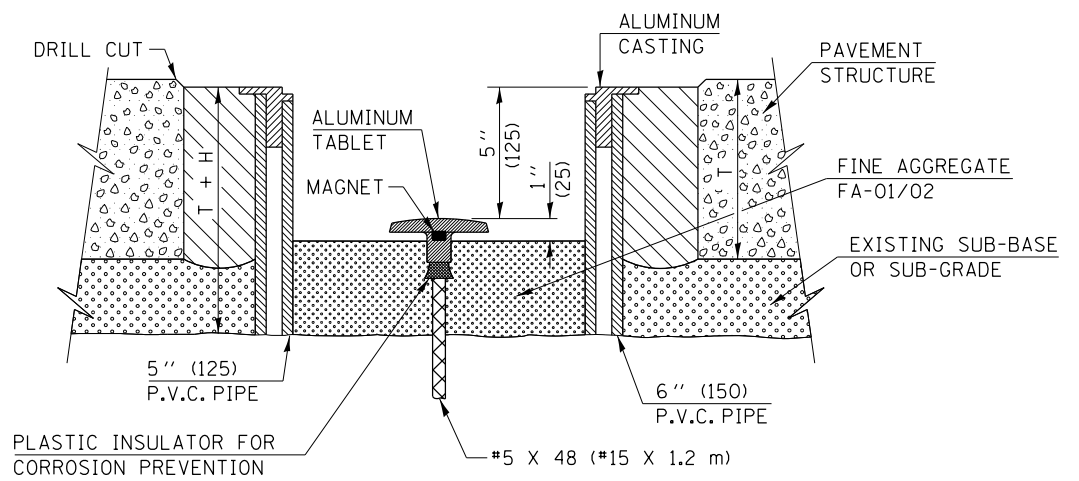
LEGEND

- ALUMINUM CASTING
 - 5" (125) OR 6" (150) P.V.C. PIPE
 - TWO-COMPONENT EPOXY
- T = THICKNESS OF PAVEMENT STRUCTURE
- H = THE THICKNESS OF THE SUB-BASE GRANULAR + 1" (25)

BILL OF MATERIAL	
ALUMINUM CASTING OF THE DIMENSIONS AND SPECIFICATIONS SHOWN OR OTHER SUBJECT TO ENGINEER'S APPROVAL OF SHOP DRAWINGS, 4 EACH - 5/16" X 2" (M8 X 50) BOLTS WITH NUTS, EPOXY, 5" OR 6" (125 mm OR 150 mm) DIAMETER P.V.C. PIPE, SCHEDULE 40 (WHEN REQUIRED).	



EXISTING SURVEY MARKER



PROPOSED SURVEY MARKER

NOT TO SCALE
 Note: All dimensions are in INCHES (millimeters) unless otherwise shown.

DISTRICT 7 DETAIL NO. Z0070202

FILE NAME =	USER NAME = #USER#	DESIGNED -	REVISED - MAD 6-11
#FILE#		DRAWN -	REVISED -
	PLOT SCALE = #SCALE#	CHECKED -	REVISED -
	PLOT DATE = #DATE#	DATE -	REVISED -

STATE OF ILLINOIS
 DEPARTMENT OF TRANSPORTATION

SURVEY MARKER VAULT

SCALE: NA SHEET NO. 1 OF 1 SHEETS STA. TO STA.

F.A.P. RTE.	SECTION	COUNTY	TOTAL SHEETS	SHEET NO.
95	7X RS-2	Effingham	14	14
CONTRACT NO. 74541				
FED. ROAD DIST. NO. ILLINOIS FED. AID PROJECT				