

STATE OF ILLINOIS  
DEPARTMENT OF TRANSPORTATION  
DIVISION OF HIGHWAYS

# PLANS FOR PROPOSED HIGHWAY IMPROVEMENT

F.A.P. RTE.	SECTION	COUNTY	TOTAL SHEETS	SHEET NO.
327	20BR	CLINTON	51	1
FED. ROAD DIST. NO.	ILLINOIS	CONTRACT NO. 76B43		

FOR INDEX OF SHEETS, SEE SHEET NO. 2

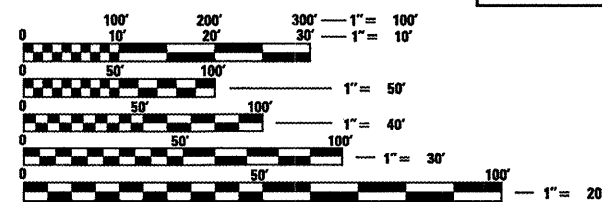
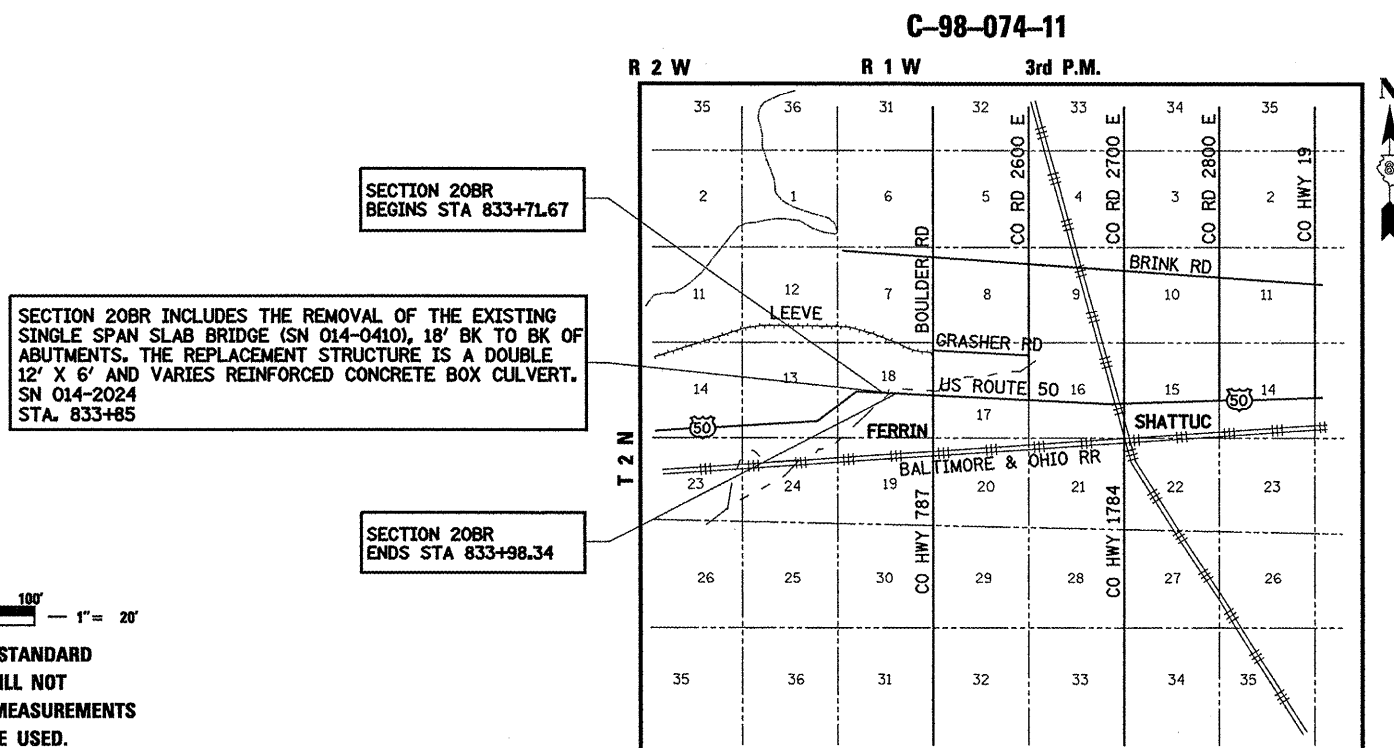
FAP ROUTE 327 (US ROUTE 50)

SECTION 20BR

PROJECT ACF-0327(057)

CLINTON COUNTY

BRIDGE REPLACEMENT



FULL SIZE PLANS HAVE BEEN PREPARED USING STANDARD ENGINEERING SCALES. REDUCED SIZED PLANS WILL NOT CONFORM TO STANDARD SCALES. IN MAKING MEASUREMENTS ON REDUCED PLANS, THE ABOVE SCALES MAY BE USED.

J.U.L.I.E.  
JOINT UTILITY LOCATION INFORMATION FOR EXCAVATION  
1-800-892-0123  
OR 811

### DESIGN DESIGNATION

NA

ADT = 3850 (2009-ACTUAL)  
ADT = 4000 (2012-ESTIMATED)  
ADT = 4900 (2032-ESTIMATED)  
SU = 3.2%  
MU = 11.7%

### LOCATION MAP

CARLYLE TOWNSHIP



GROSS SECTION LENGTH = 26.67 FEET = 0.005 MILES  
NET SECTION LENGTH = 26.67 FEET = 0.005 MILES

LATITUDE      LONGITUDE  
SN 014-0410    38.61739°    89.24409°

PROJECT ENGINEER: PATTI LEBEAU (618) 346-3179  
PROJECT MANAGER: REBECCA THARP (618) 346-3323

CONTRACT NO. 76B43



*Brian R. Mueller*

ILLINOIS PROFESSIONAL ENGINEER NO. 062-052018 DATE 11-18-11  
EXP. 11-30-2013

STATE OF ILLINOIS  
DEPARTMENT OF TRANSPORTATION  
DIVISION OF HIGHWAYS

SUBMITTED *December 16 20 11*

*John M. Osmer*  
DEPUTY DIRECTOR OF HIGHWAYS, REGION 5 ENGINEER

*Feb 3 20 12*  
*John D. Cavamelli, P.E./B.L.*  
acting ENGINEER OF DESIGN AND ENVIRONMENT

*Feb 3 20 12*  
*William R. Fienler*  
acting DIRECTOR OF HIGHWAYS, CHIEF ENGINEER



BERNARDIN \* LOCHMUELLER & ASSOCIATES, INC.  
3 OAK DRIVE  
MARYVILLE, ILLINOIS 62062  
PHONE (618) 288-4666  
FAX (618) 288-4666

**PRINTED BY THE AUTHORITY  
OF THE STATE OF ILLINOIS**