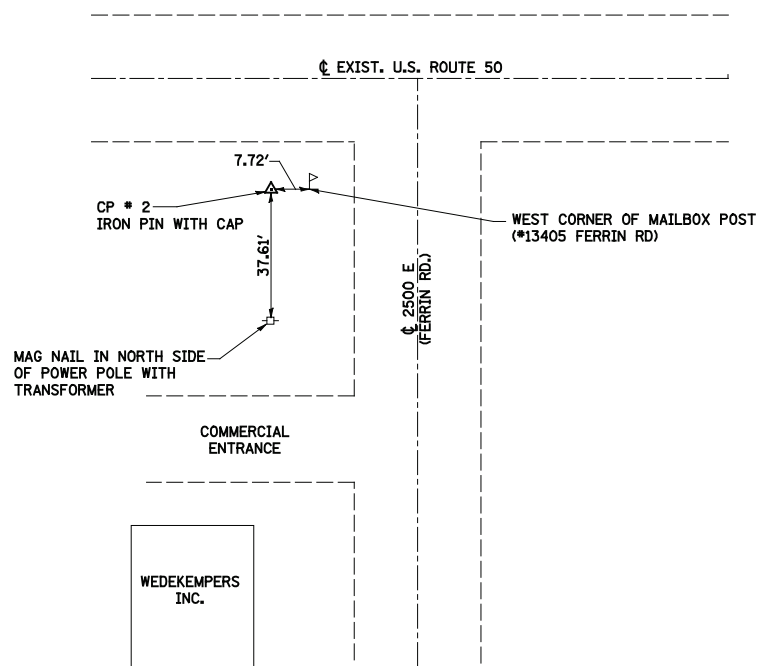


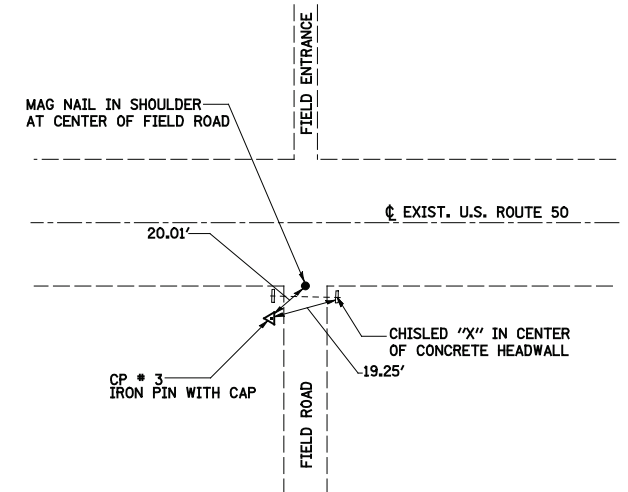
**CONTROL POINT NO. 1
(IRON PIN WITH CAP)**

N 710718.7822
E 563206.0878



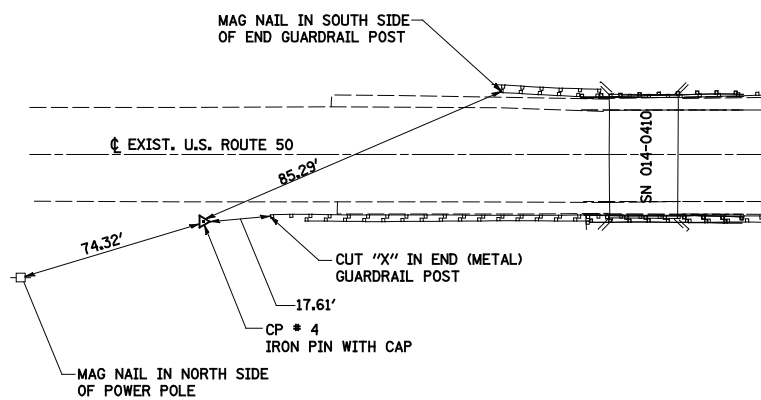
**CONTROL POINT NO. 2
(IRON PIN WITH CAP)**

N 711440.5865
E 563193.5746



**CONTROL POINT NO. 3
(IRON PIN WITH CAP)**

N 711507.8022
E 561908.4872



**CONTROL POINT NO. 4
(IRON PIN WITH CAP)**

N 711598.1155
E 560172.2072

NOTE:
ALL DISTANCES MEASURED DIRECT.

FILE NAME =	USER NAME = Paul	DESIGNED - JLS	REVISED -
S:\Projects\410-0022-3HY US 50 Final Plans\dgn\CADD Sheets\0876843-ah1-ATB.dgn		DRAWN - PDB	REVISED -
		CHECKED - BRM	REVISED -
		DATE - 02-08-11	REVISED -

DESIGNED - JLS	REVISED -
DRAWN - PDB	REVISED -
CHECKED - BRM	REVISED -
DATE - 02-08-11	REVISED -

**STATE OF ILLINOIS
DEPARTMENT OF TRANSPORTATION**

HORIZONTAL CONTROL & TIE POINTS, US ROUTE 50

SCALE: SHEET NO. 2 OF 2 SHEETS STA. TO STA.

F.A.P. RTE.	SECTION	COUNTY	TOTAL SHEETS	SHEET NO.
327	20BR	CLINTON	51	11
CONTRACT NO. 76B43				
FED. ROAD DIST. NO.		ILLINOIS FED. AID PROJECT		