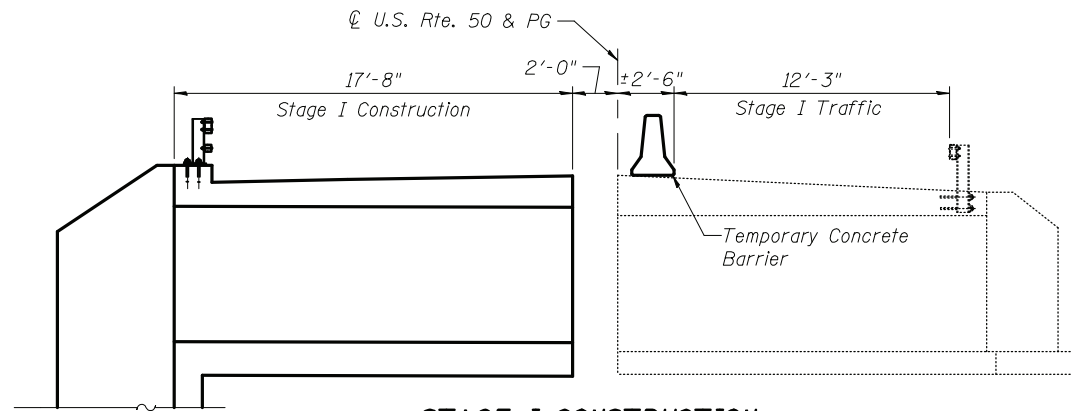
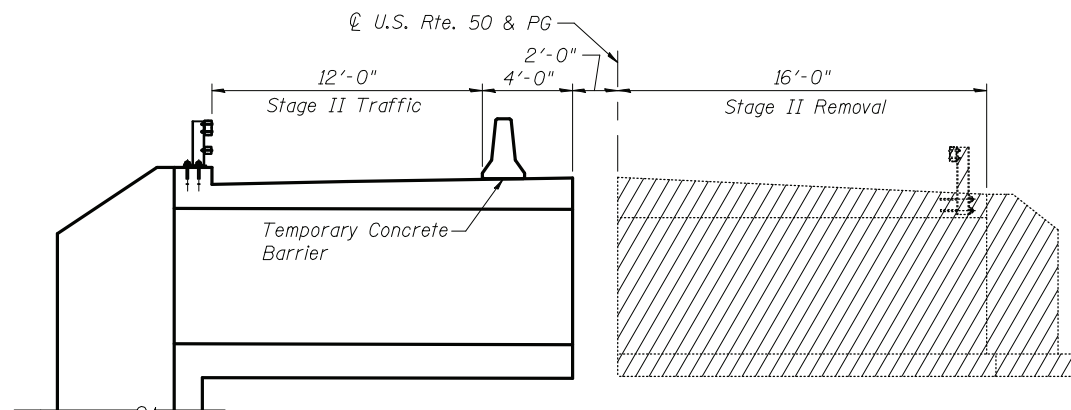


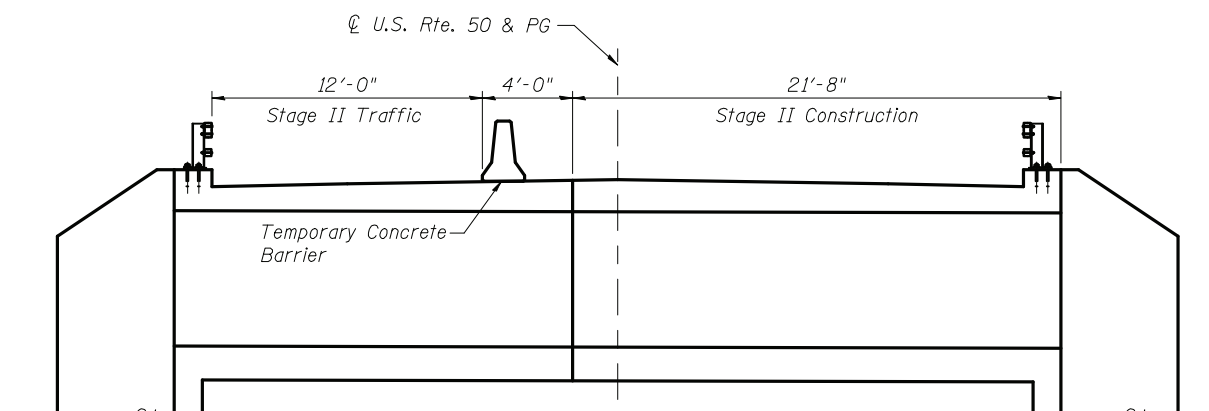
**STAGE I REMOVAL**



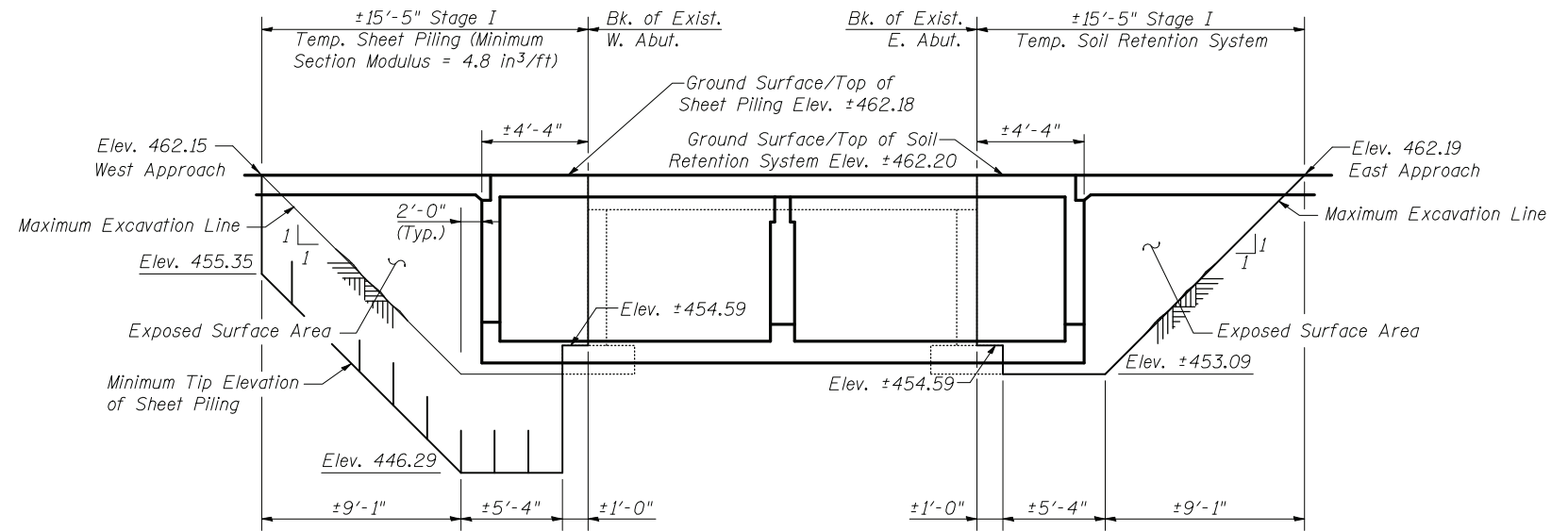
**STAGE I CONSTRUCTION**



**STAGE II REMOVAL**



**STAGE II CONSTRUCTION**

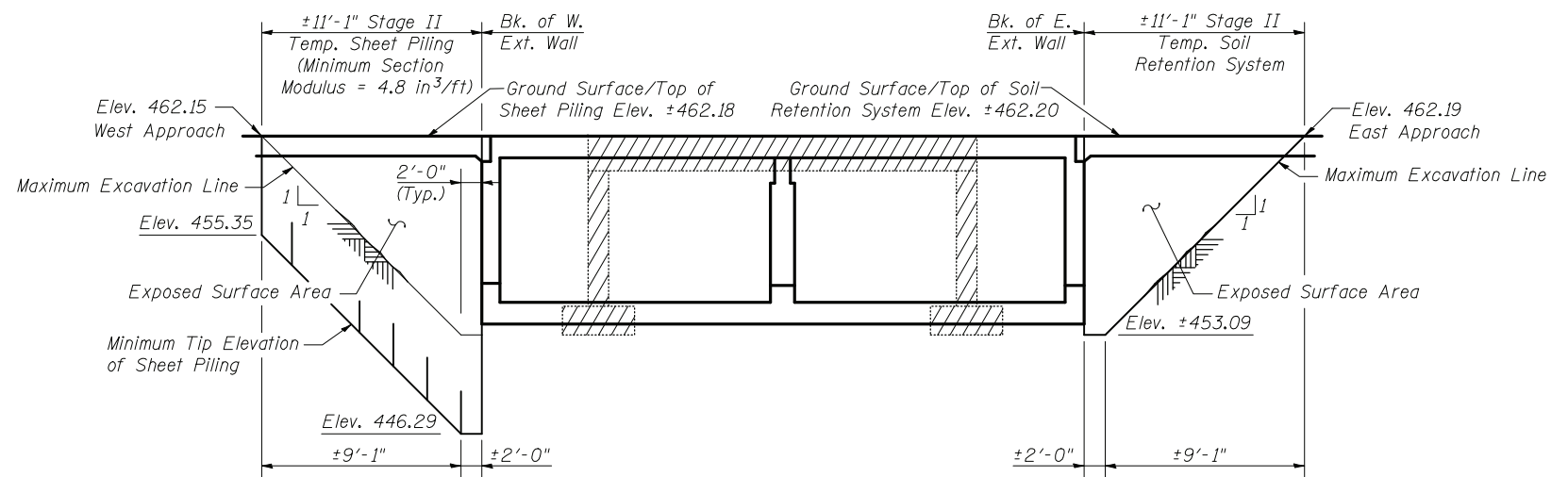


**STAGE I TEMPORARY SOIL RETENTION DETAILS**

(Looking Upstream)

**STAGE I SOIL RETENTION**

Temporary Sheet Piling	Sq. Ft.	198.4
Temporary Soil Retention System	Sq. Ft.	97.4



**STAGE II TEMPORARY SOIL RETENTION DETAILS**

(Looking Upstream)

**STAGE II SOIL RETENTION**

Temporary Sheet Piling	Sq. Ft.	134.0
Temporary Soil Retention System	Sq. Ft.	59.5

**Notes:**

Stage removal & construction sections shown are looking East.  
 Hatched areas indicate Removal of Existing Structure.  
 A cantilevered sheet piling design does not appear feasible and additional members or other retention systems may be necessary. The Contractor shall submit a Temporary Soil Retention System design including plan details and calculations for review and acceptance by the Engineer.  
 If the Contractor chooses to alter the temporary cantilevered sheet piling design requirements shown on the plans, a design submittal including plan details and calculations will be required for review and acceptance by the Engineer.  
 For quantity of Temporary Concrete Barrier, see Roadway Plans.

FILE NAME = \014202476B43-002-Stage Construction	DESIGNED - ACS	REVISED -
DESIGNER NAME =	CHECKED - BB	REVISED -
Illinois Design Firm Number 184,001670	DRAWN - JG	REVISED -
PLOT SCALE =	CHECKED - CJF	REVISED -
PLOT DATE = 8:51:31 AM 12/14/2011		

**STATE OF ILLINOIS  
DEPARTMENT OF TRANSPORTATION**

**STAGE CONSTRUCTION DETAILS  
STRUCTURE NO. 014-2024**

SHEET NO. 2 OF 15 SHEETS

F.A.P. R.T.E.	SECTION	COUNTY	TOTAL SHEETS	SHEET NO.
327	20BR	CLINTON	51	28
CONTRACT NO. 76B43				
FED. ROAD DIST. NO. - [ILLINOIS] FED. AID PROJECT				