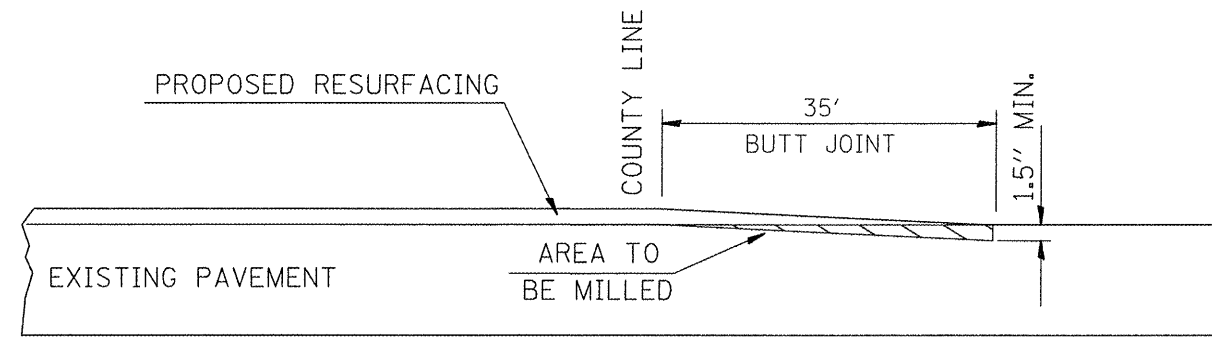
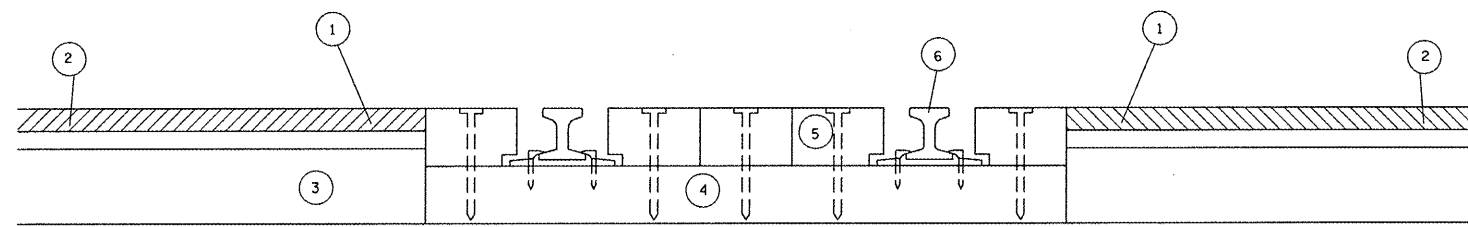


JOINT @ BEGINNING OF PROJECT

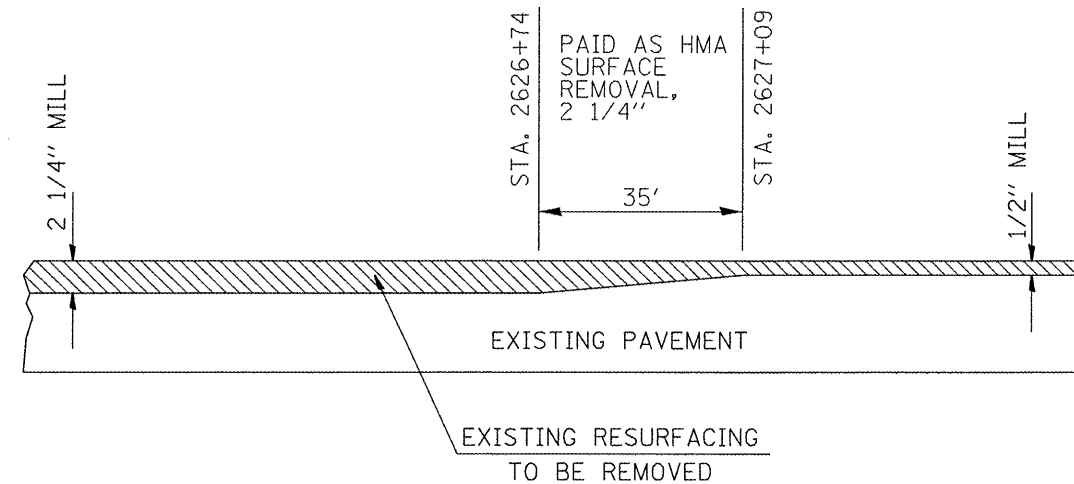


BUTT JOINT @ END OF PROJECT



JOINTS @ RAILROAD

- ① PROPOSED 2 1/4" MILLING
- ② PROPOSED 2-1/4" RESURFACING
- ③ EXISTING PAVEMENT
- ④ EXISTING RR TIES
- ⑤ EXISTING RR PLANKS
- ⑥ EXISTING RAIL



MILLING TRANSITION

FILE NAME =	USER NAME = conoverpj	DESIGNED -	REVISED -
c:\pwwork\pwidot\conoverpj\d0212697.dwg	6e52-shh-plan.dgn	DRAWN -	REVISED -
	PLOT SCALE = 100.0000' / 1"	CHECKED -	REVISED -
	PLOT DATE = 1/9/2012	DATE -	REVISED -

STATE OF ILLINOIS
DEPARTMENT OF TRANSPORTATION

BUTT JOINT & MILLING DETAILS

SCALE: SHEET NO. 1 OF 2 SHEETS STA. TO STA.

F.A.P. RTE.	SECTION	COUNTY	TOTAL SHEETS	SHEET NO.
•	(10-1,11)RS-3	WASHINGTON	18	15
*322/821		CONTRACT NO. 76E52		
FED. ROAD DIST. NO. ILLINOIS FED. AID PROJECT				