

03-09-12 LETTING ITEM 048

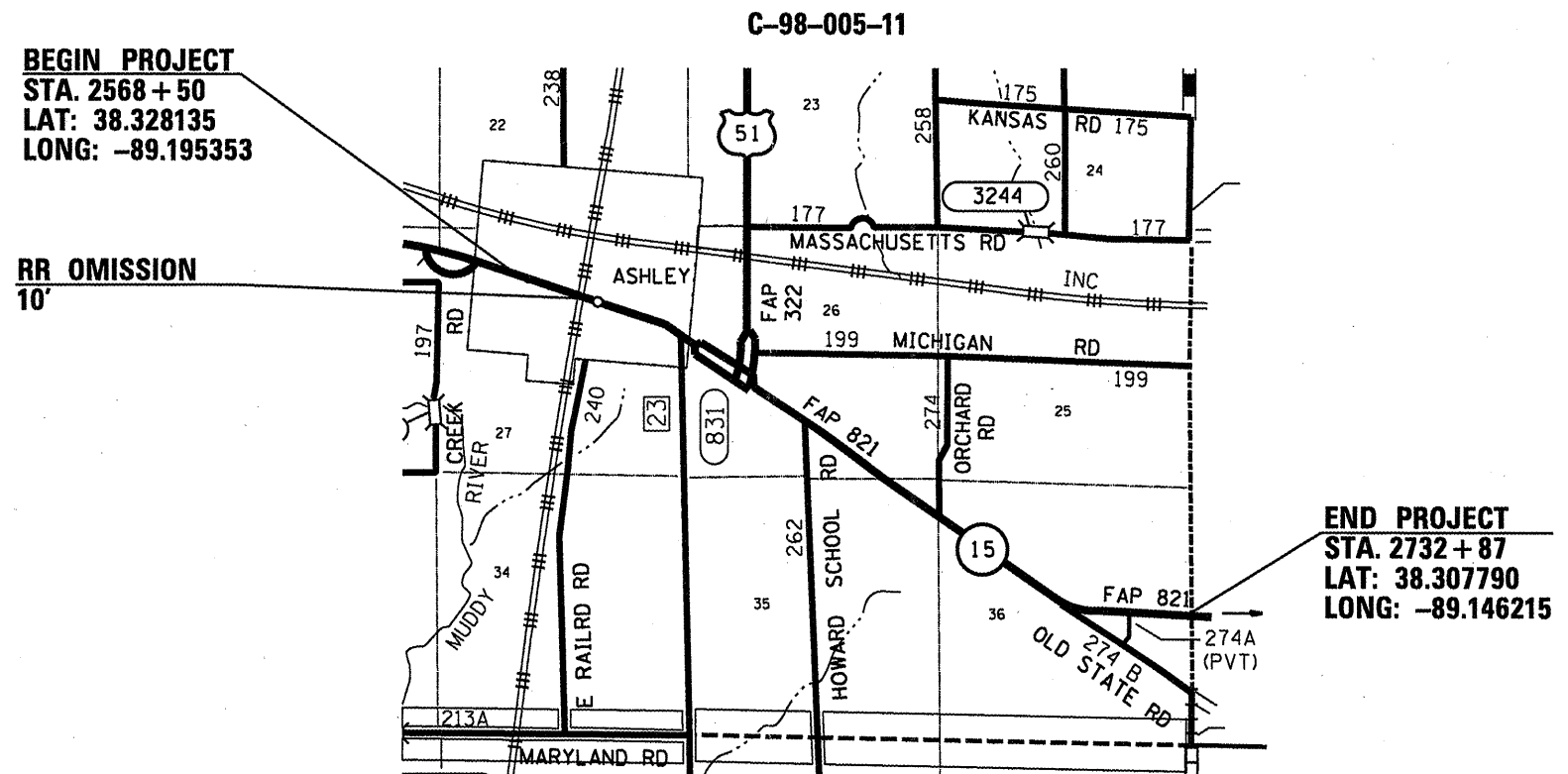
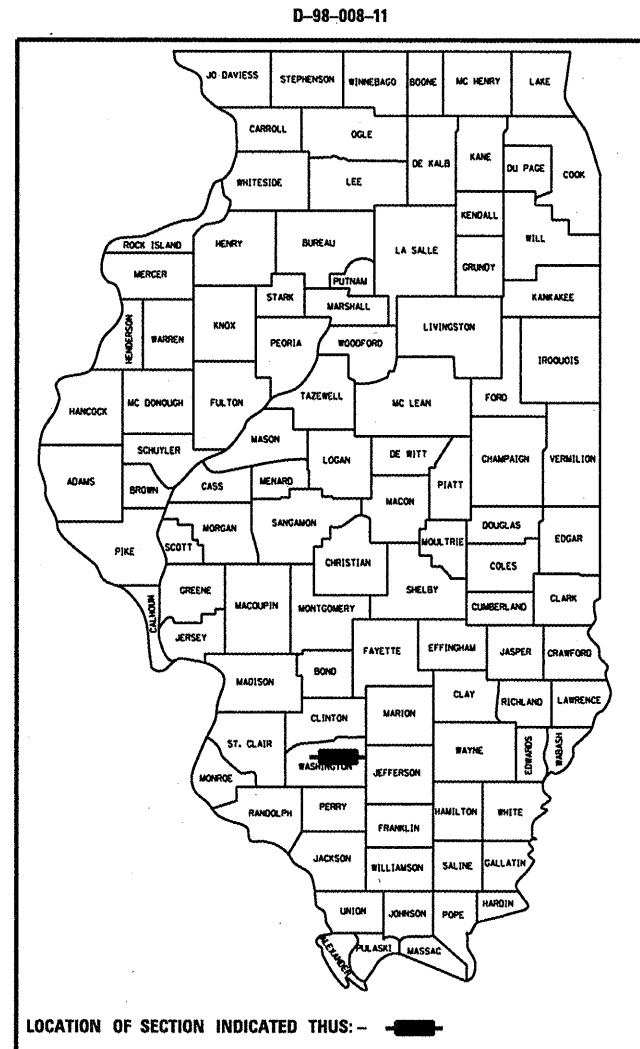
STATE OF ILLINOIS
DEPARTMENT OF TRANSPORTATION
DIVISION OF HIGHWAYS

**PROPOSED
HIGHWAY PLANS**

FAP ROUTE 322/821 (IL 15/US 51)
SECTION (10-1,11)RS-3
PROJECT HSIP-F-0005(872)
RESURFACING - 3P
WASHINGTON COUNTY

F.A.P. RTE.	SECTION	COUNTY	TOTAL SHEETS	SHEET NO.
*322/821	(10-1,11)RS-3	WASHINGTON	18	1
		ILLINOIS	CONTRACT NO. 76E52	

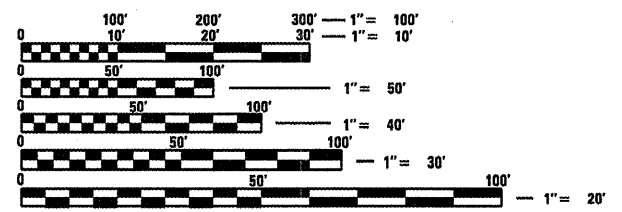
FOR INDEX OF SHEETS, SEE SHEET NO. 2



BEGIN PROJECT
STA. 2568 + 50
LAT: 38.328135
LONG: -89.195353

RR OMISSION
10'

END PROJECT
STA. 2732 + 87
LAT: 38.307790
LONG: -89.146215

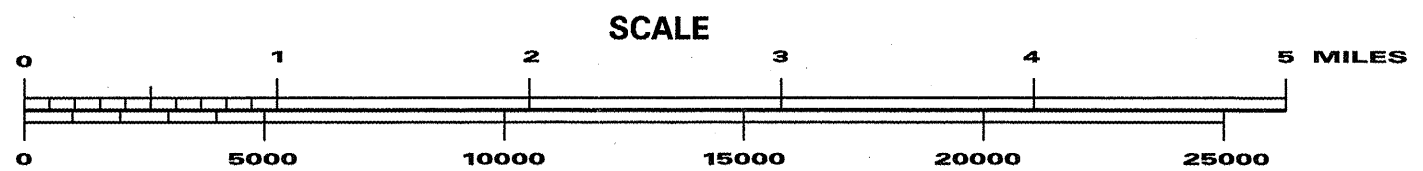


FULL SIZE PLANS HAVE BEEN PREPARED USING STANDARD ENGINEERING SCALES. REDUCED SIZED PLANS WILL NOT CONFORM TO STANDARD SCALES. IN MAKING MEASUREMENTS ON REDUCED PLANS, THE ABOVE SCALES MAY BE USED.

J.U.L.I.E.
JOINT UTILITY LOCATION INFORMATION FOR EXCAVATION
1-800-892-0123
OR 811

PROJECT ENGINEER: PATTI LEBEAU 618-346-3179
PROJECT MANAGER: BILLIE OWEN 618-246-3186

CONTRACT NO. 76E52



GROSS LENGTH = 16437 FT. = 3.11 MILE
NET LENGTH = 16428 FT. = 3.11 MILE

STATE OF ILLINOIS
DEPARTMENT OF TRANSPORTATION
DIVISION OF HIGHWAYS

SUBMITTED *December 15 20 11*

James M. O'Brien
DEPUTY DIRECTOR OF HIGHWAYS, REGION 5 ENGINEER

Feb 3 20 12
John D. Baranzelli, P.E.
acting ENGINEER OF DESIGN AND ENVIRONMENT

Feb 3 20 12
William B. Flynn
acting DIRECTOR OF HIGHWAYS, CHIEF ENGINEER

**PRINTED BY THE AUTHORITY
OF THE STATE OF ILLINOIS**

INDEX OF SHEETS

- 1 COVER SHEET
- 2 INDEX OF SHEETS, ADT, COMMITMENTS,
HIGHWAY STANDARDS
- 3 GENERAL NOTES
- 4-5 SUMMARY OF QUANTITIES
- 6-7 TYPICAL SECTIONS
- 8-10 SCHEDULES OF QUANTITIES
- 11 LINE DIAGRAM
- 12-13 PAVING DETAILS
- 14 STRIPING DETAILS
- 15-16 BUTT JOINT & MILLING DETAILS
- 17 MISC. DETAILS
- 18 SAFETY SHOULDER LOCATIONS

ADT

JOHNSON ST. TO US 51
 2009 ADT = 3150 (ACTUAL)
 2012 ADT = 3250 (ESTIMATED)
 2032 ADT = 4000 (ESTIMATED)
 SU = 4.0%
 MU = 3.2%

US 51 TO JEFFERSON COUNTY LINE
 2009 ADT = 2350 (ACTUAL)
 2012 ADT = 2400 (ESTIMATED)
 2032 ADT = 2900 (ESTIMATED)
 SU = 3.0%
 MU = 3.0%

COMMITMENTS

NONE

HIGHWAY STANDARDS

- 000001-06
- 001006
- 642001-02
- 482011-03
- 701011-02
- 701201-04
- 701301-04
- 701306-03
- 701311-03
- 701336-06
- 701501-06
- 701901-02
- 780001-03
- 781001-03

FILE NAME =	USER NAME = conoverpj	DESIGNED -	REVISED -	STATE OF ILLINOIS DEPARTMENT OF TRANSPORTATION	INDEX OF SHEETS, ADT, COMMITMENTS, HIGHWAY STANDARDS	F.A.P. RTE.	SECTION	COUNTY	TOTAL SHEETS	SHEET NO.
ci:\pw_work\pwidot\conoverpj\d0212697\d8	76e52-shtrplan.dgn	DRAWN -	REVISED -			•	(10-1.11RS-3	WASHINGTON	18	2
	PLOT SCALE = 100.0000 ' / 1"	CHECKED -	REVISED -			*322/821				CONTRACT NO. 76E52
	PLOT DATE = 12/15/2011	DATE -	REVISED -		SCALE:	SHEET NO. 1 OF 1 SHEETS	STA.	TO STA.	FED. ROAD DIST. NO. ILLINOIS FED. AID PROJECT	

GENERAL NOTES

1. THE STANDARDS AND REVISION NUMBERS LISTED SHALL APPLY TO THIS PROJECT.
2. ILLINOIS STATE LAW REQUIRES A 48-HOUR NOTICE BE GIVEN TO ALL UTILITIES BEFORE DIGGING. FIELD MARKING OF FACILITIES MAY BE OBTAINED BY CONTACTING J.U.L.I.E. OR FOR NON-MEMBERS, THE UTILITY COMPANY DIRECTLY. AGENCIES KNOWN TO HAVE FACILITIES WITHIN THE PROJECT AREA ARE AS FOLLOWS:

- *AMEREN ILLINOIS - GAS & ELECTRIC
- *CITY OF ASHLEY - WATER & SANITARY SEWER
- *CHARTER COMMUNICATIONS, INC. - CABLE TV
- *FRONTIER NORTH, INC. - COMMUNICATIONS
- *TRI-COUNTY ELECTRIC COOPERATIVE, INC. - ELECTRIC
- *WASHINGTON COUNTY WATER CO. - WATER

MEMBERS OF J.U.L.I.E. (800) 892-0123 ARE INDICATED BY *. NON-J.U.L.I.E. MEMBERS MUST BE NOTIFIED INDIVIDUALLY.

3. THE CONTRACTOR AND ENGINEER SHALL BE AWARE THAT LIMITED SURVEY WAS PERFORMED FOR THIS PROJECT AT THE LOCATIONS OF THE SAFETY SHOULDERS. THE STATIONING AND TOPO SHOWN IN THE PLANS FOR THE REMAINDER OF THE PROJECT WAS CREATED USING MICROFILM AND FIELD MEASUREMENTS MADE BY DESIGN PERSONNEL. BOTH SHALL BE ASSUMED TO BE APPROXIMATE.
4. THE CONTRACTOR SHALL VERIFY ALL DIMENSIONS AND CONDITIONS IN THE FIELD PRIOR TO CONSTRUCTION AND ORDERING OF MATERIALS.
5. THE THICKNESS OF THE BITUMINOUS MIXTURE SHOWN ON THE PLANS IS THE NOMINAL THICKNESS. DEVIATIONS FROM THE NOMINAL THICKNESS WILL BE PERMITTED WHEN SUCH DEVIATIONS OCCUR DUE TO IRREGULARITIES IN THE EXISTING SURFACE OR BASE ON WHICH THE BITUMINOUS MIXTURE IS PLACED.
6. NO OVERNIGHT LANE CLOSURES WILL BE ALLOWED.
7. CARE SHALL BE TAKEN AT ALL SIDE STREETS AND ENTRANCES DURING MILLING OPERATIONS TO ENSURE THAT THE PROPOSED RESURFACING WILL MEET THE EXISTING SIDE STREETS AND ENTRANCES.
8. "ROAD CONSTRUCTION AHEAD" SIGNS SHALL BE PLACED AT EACH END OF THE PROJECT PLUS THE INTERSECTING SIDE ROADS, AND WILL BE INCLUDED IN THE TRAFFIC CONTROL PAY ITEMS. ALL CONSTRUCTION SIGNS SHALL BE FLUORESCENT ORANGE, 48" X 48".
9. PROPOSED PAVEMENT MARKING SHALL BE PLACED IN THE SAME LOCATIONS AS EXISTING, AS SHOWN ON THE DETAIL SHEET, OR AS DIRECTED BY THE RESIDENT ENGINEER.
10. SHORT-TERM PAVEMENT MARKING SHALL BE APPLIED TO THE MILLED, PRIMED, AND FINAL BITUMINOUS SURFACE. ONLY THE REMOVAL OF THE FINAL SURFACE APPLICATION SHALL BE PAID FOR AS WORK ZONE PAVEMENT MARKING REMOVAL - SQ. FT. A QUANTITY FOR TEMPORARY PAVEMENT MARKING EQUAL TO THE AMOUNT OF PERMANENT PAVEMENT MARKING HAS BEEN ADDED TO THE PLANS.
11. ALL TEMPORARY PAVEMENT MARKINGS WILL BE PLACED IN SUCH A MANNER SO AS NOT TO INTERFERE WITH THE PLACEMENT OF PERMANENT PAVEMENT MARKINGS.
12. THE RESIDENT ENGINEER SHALL VERIFY THE EXISTENCE OF HIGHWAY LIGHTING AND/OR ITS UTILITIES WITHIN THE PROJECT LIMITS. IF HIGHWAY LIGHTING AND/OR ITS EXISTS WITHIN THE PROJECT LIMITS, AND IF THESE ITEMS REQUIRE LOCATING, THE CONTRACTOR SHALL BE DIRECTED TO DO SO ACCORDING TO SECTION 803 OF THE STANDARD SPECIFICATIONS. IF "LOCATING UNDERGROUND CABLE" IS NOT INCLUDED AS PART OF THE PLANS, THIS WORK SHALL BE PAID FOR ACCORDING TO ARTICLE 109.04 OF THE STANDARD SPECIFICATIONS.
13. MULCH, UNLESS OTHERWISE PERMITTED BY THE ENGINEER, SHALL CONFORM TO METHOD 2, PROCEDURE 2 AS SPECIFIED IN ARTICLE 251.03.

15. THE FOLLOWING MIXTURE REQUIREMENTS ARE APPLICABLE FOR THIS PROJECT:

MIXTURE USE	SURFACE	LEVEL BINDER	INCIDENTAL SURF	SHOULDERS > 2.25"	SHOULDERS < 2.25"
AC/PG	PG 64-22	PG 64-22	PG 64-22	PG 64-22	PG 64-22
RAP % (MAX)	SEE SPEC.	SEE SPEC.	SEE SPEC.	See Contract RAP Special Provision	See Contract RAP Special Provision
DESIGN AIR VOIDS	4.0% @ Ndes=70	4.0% @ Ndes=70	4.0% @ Ndes=70		
MIX COMPOSITION (GRADATION MIXTURE)	IL 9.5	IL 9.5	IL 9.5	**2.0% @ Ndes=30	**2.0% @ Ndes=30
ERUCTION AGG	MIXTURE "C"	MIXTURE "C"	MIXTURE "C"	NMAS 3/4"	NMAS 1/2"

**Top Lift Shoulders - Design this mix at 2% voids and add asphalt to reduce voids to 1.5%.

Plan quantities for Bituminous Concrete Surface Course items are calculated using a unit weight of 112 lb/sq yd/in (59.8 kg/sq m/25 mm thickness).

FILE NAME =	USER NAME = conoverpj	DESIGNED -	REVISED -	STATE OF ILLINOIS DEPARTMENT OF TRANSPORTATION	GENERAL NOTES	F.A.P. RTE.	SECTION	COUNTY	TOTAL SHEETS	SHEET NO.	
c:\pwwork\pwwork\conoverpj\0212697\d8	6e52-shr-plen.dgn	DRAWN -	REVISED -			*	(10-1,11)RS-3	WASHINGTON	18	3	
PLOT SCALE = 100.0000' / in.	CHECKED -	REVISED -	REVISED -			*322/821	CONTRACT NO. 76E52				
PLOT DATE = 1/9/2012	DATE -	REVISED -	REVISED -			FED. ROAD DIST. NO.	ILLINOIS	FED. AID PROJECT			
SCALE:						SHEET NO. 1 OF 1 SHEETS		STA.		TO STA.	

SUMMARY OF QUANTITIES

SUMMARY OF QUANTITIES				F(L24E) HSIP(LS3E)		SUMMARY OF QUANTITIES				F(L24E) HSIP(LS3E)	
CODE NO	ITEM	UNIT	TOTAL QUANTITIES	CONSTRUCTION TYPE CODE		CODE NO	ITEM	UNIT	TOTAL QUANTITIES	CONSTRUCTION TYPE CODE	
				0005 80% FED 20% STATE	0021 90% FED 10% STATE					0005 80% FED 20% STATE	0021 90% FED 10% STATE
20200500	EARTH EXCAVATION (WIDENING)	CU YD	306		306	40603315	HOT-MIX ASPHALT SURFACE COURSE, MIX "C", N70	TON	4103	4103	
20400800	FURNISHED EXCAVATION	CU YD	143		143	40800020	BITUMINOUS MATERIALS (PRIME COAT)	TON	0.1	0.1	
*25000200	SEEDING, CLASS 2	ACRE	0.7		0.7	40800030	AGGREGATE (PRIME COAT)	TON	1	1	
*25000400	NITROGEN FERTILIZER NUTRIENT	POUND	63		63	40800050	INCIDENTAL HOT-MIX ASPHALT SURFACING	TON	25	25	
*25000500	PHOSPHORUS FERTILIZER NUTRIENT	POUND	63		63	44000151	HOT-MIX ASPHALT SURFACE REMOVAL, 1/2"	SQ YD	31650	31650	
*25000600	POTASSIUM FERTILIZER NUTRIENT	POUND	63		63	44000158	HOT-MIX ASPHALT SURFACE REMOVAL, 2 1/4"	SQ YD	17234	17234	
*25100115	MULCH, METHOD 2	ACRE	1.4		1.4	44300200	STRIP REFLECTIVE CRACK CONTROL TREATMENT	FOOT	32854	32854	
28000250	TEMPORARY EROSION CONTROL SEEDING	POUND	63		63	48102100	AGGREGATE WEDGE SHOULDER, TYPE B	TON	1378	1378	
40600200	BITUMINOUS MATERIALS (PRIME COAT)	TON	30	30		48203029	HOT-MIX ASPHALT SHOULDERS, 8"	SQ YD	1735		1735
40600300	AGGREGATE (PRIME COAT)	TON	141	141		48203100	HOT-MIX ASPHALT SHOULDERS	TON	259	259	
40600635	LEVELING BINDER (MACHINE METHOD), N70	TON	1967	1967		64200108	SHOULDER RUMBLE STRIPS, 8 INCH	FOOT	4618		4618
40600895	CONSTRUCTING TEST STRIP	EACH	1	1		67000400	ENGINEER'S FIELD OFFICE, TYPE A	CAL MO	3	3	
40600982	HOT-MIX ASPHALT SURFACE REMOVAL - BUTT JOINT	SQ YD	264	264		67100100	MOBILIZATION	L SUM	1	1	
40600990	TEMPORARY RAMP	SQ YD	81	81							

*SPECIALTY ITEM

FILE NAME =	USER NAME = conoverpj	DESIGNED -	REVISED -	STATE OF ILLINOIS DEPARTMENT OF TRANSPORTATION	SUMMARY OF QUANTITIES	F.A.P. RTE.	SECTION	COUNTY	TOTAL SHEETS	SHEET NO.
ci:\pw\work\p\dot\conoverpj\d0212697\d8	6e52-sh-t-plen.dgn	DRAWN -	REVISED -			•	(10-1,1)RS-3	WASHINGTON	18	4
	PLOT SCALE = 100.0000' / in.	CHECKED -	REVISED -			•322/821				CONTRACT NO. 76E52
	PLOT DATE = 12/15/2011	DATE -	REVISED -			FED. ROAD DIST. NO.	ILLINOIS FED. AID PROJECT			

SCALE: SHEET NO. 1 OF 2 SHEETS STA. TO STA.

SUMMARY OF QUANTITIES

SUMMARY OF QUANTITIES			CONSTRUCTION TYPE CODE		
CODE NO	ITEM	UNIT	TOTAL QUANTITIES	F(L24E)	HSIP(L53E)
				0005 80% FED 20% STATE	0021 90% FED 10% STATE
70100450	TRAFFIC CONTROL AND PROTECTION, STANDARD 701201	L SUM	1	1	
70100460	TRAFFIC CONTROL AND PROTECTION, STANDARD 701306	L SUM	1	1	
70100600	TRAFFIC CONTROL AND PROTECTION, STANDARD 701336	L SUM	<del style="text-align: center;">1	<del style="text-align: center;">1	
70102620	TRAFFIC CONTROL AND PROTECTION, STANDARD 701501	L SUM	1	1	
70300100	SHORT-TERM PAVEMENT MARKING	FOOT	4872	4872	
70300210	TEMPORARY PAVEMENT MARKING- LETTERS AND SYMBOLS	SQ FT	154	154	
70300220	TEMPORARY PAVEMENT MARKING- LINE 4"	FOOT	46140	46140	
70300280	TEMPORARY PAVEMENT MARKING- LINE 24"	FOOT	72	72	
70301000	WORK ZONE PAVEMENT MARKING REMOVAL	SQ FT	542	542	
*78000100	THERMOPLASTIC PAVEMENT MARKING - LETTERS AND SYMBOLS	SQ FT	154	154	

SUMMARY OF QUANTITIES			CONSTRUCTION TYPE CODE		
CODE NO	ITEM	UNIT	TOTAL QUANTITIES	F(L24E)	HSIP(L53E)
				0005 80% FED 20% STATE	0021 90% FED 10% STATE
*78000200	THERMOPLASTIC PAVEMENT MARKING - LINE 4"	FOOT	46140	46140	
*78000650	THERMOPLASTIC PAVEMENT MARKING - LINE 24"	FOOT	72	72	
*78100100	RAISED REFLECTIVE PAVEMENT MARKER	EACH	194	194	
*78200300	PRISMATIC CURB REFLECTOR	EACH	92	92	
78300200	RAISED REFLECTIVE PAVEMENT MARKER REMOVAL	EACH	194	194	
*X7800200	PAINT PAVEMENT MARKING CURB	FOOT	214	214	
Z0048665	RAILROAD PROTECTIVE LIABILITY INSURANCE	L SUM	1	1	
+Z0076600	TRAINEES	HOOR	500	500	

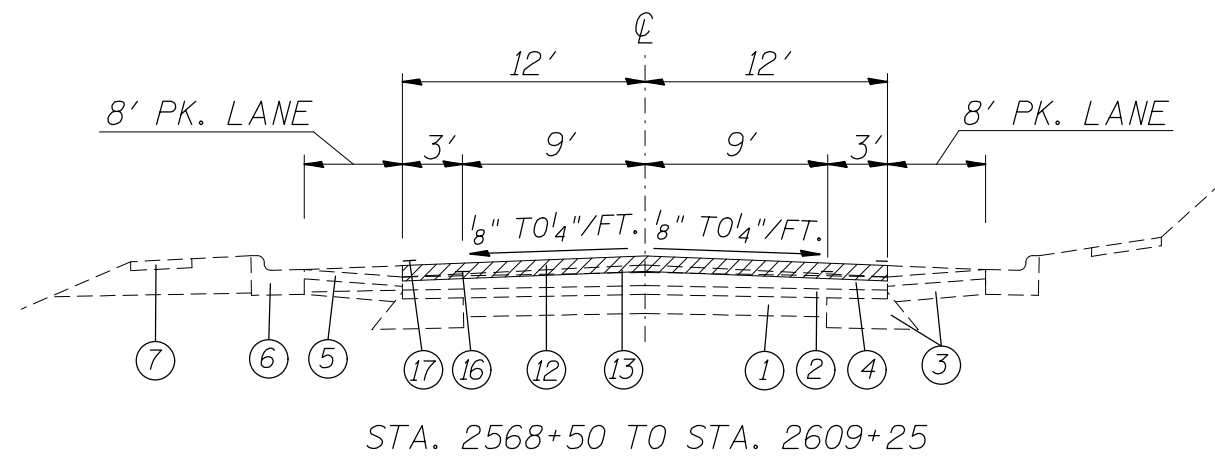
*SPECIALTY ITEM + 0042

FILE NAME =	USER NAME = eanoverp.j	DESIGNED -	REVISED -
el\pwwork\pwwork\eanoverp.j\d0212697\d0	6e52-sht-plan.dgn	DRAWN -	REVISED -
	PLOT SCALE = 1/8" = 1' / in.	CHECKED -	REVISED -
	PLOT DATE = 12/15/2011	DATE -	REVISED -

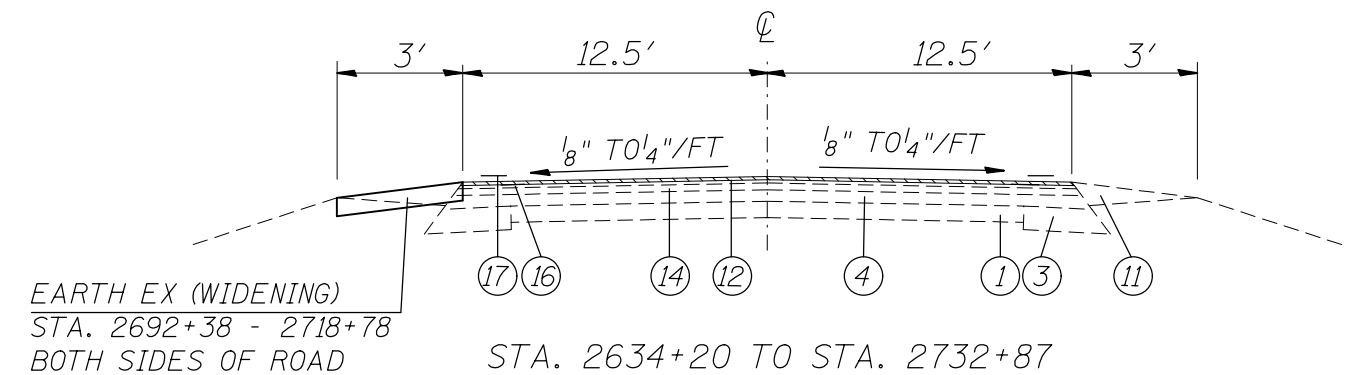
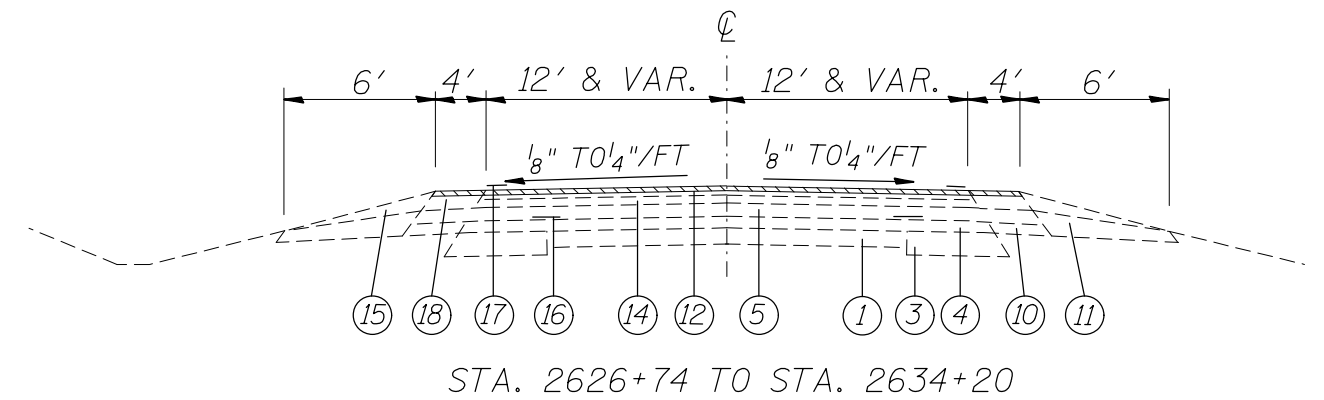
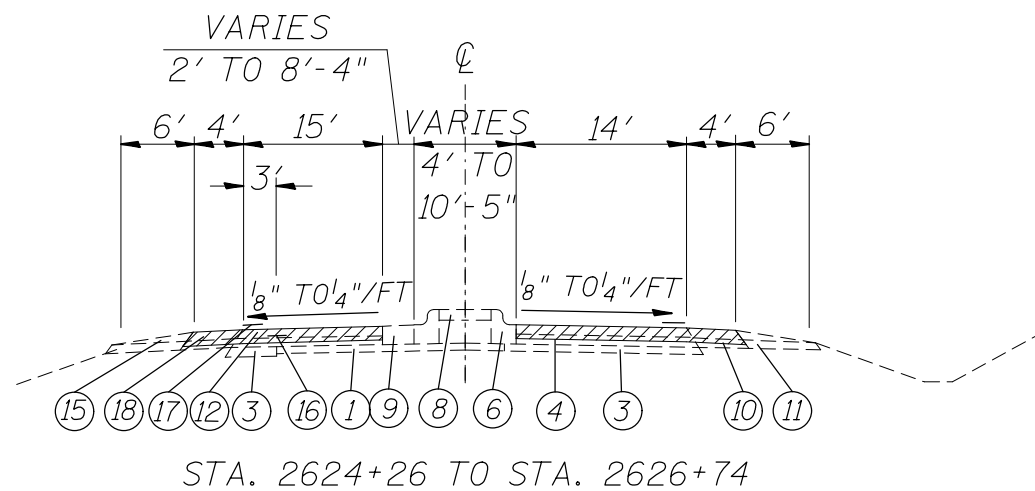
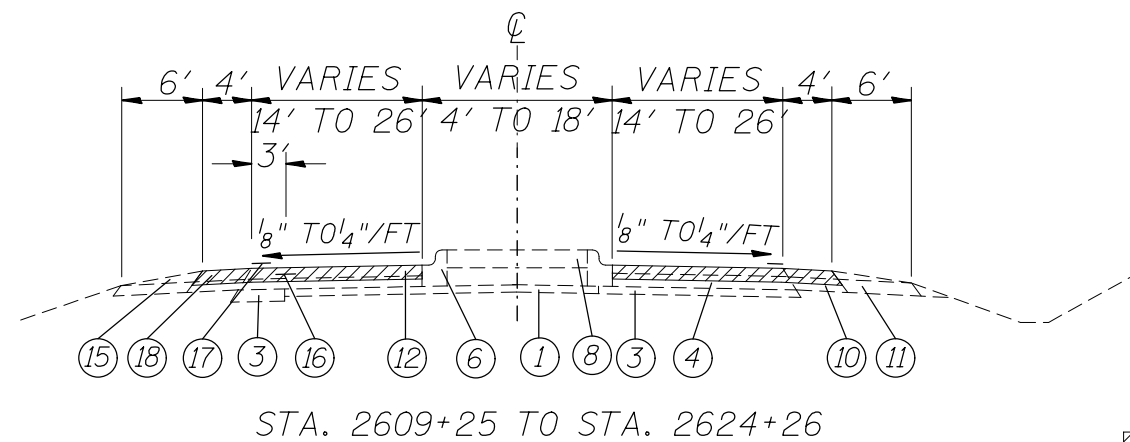
**STATE OF ILLINOIS
DEPARTMENT OF TRANSPORTATION**

SUMMARY OF QUANTITIES			
SCALE:	SHEET NO. 2 OF 2 SHEETS	STA.	TO STA.

F.A.P. RTE.	SECTION	COUNTY	TOTAL SHEETS	SHEET NO.
•	(10-1,11RS-3)	WASHINGTON	18	5
*322/821	FED. ROAD DIST. NO. ILLINOIS FED. AID PROJECT		CONTRACT NO. 76E52	



RR OMISSION:
STA. 2582+62 TO STA. 2582+72



- PROP. HMA SURFACE REMOVAL, 2 1/4"
- PROP. HMA SURFACE REMOVAL, 1/2"

LEGEND

- ① Existing Concrete Pavement
- ② Existing Leveling Binder (Variable)
- ③ Existing Bit. Base Course
- ④ Existing Bit. Surface Course
- ⑤ Existing Bit. Surface Course 1 1/2 "
- ⑥ Existing Comb. Curb & Gutter B-6.24
- ⑦ Existing 4' P.C.C. Sidewalk (4")
- ⑧ Existing 4" P.C.C. Median Surface
- ⑨ Existing Conc. Median Type C-4 Special
- ⑩ Existing Bit. Shoulder
- ⑪ Existing Agg. Shoulder, Type A
- ⑫ Existing HMA Surface Course 1 1/2 "
- ⑬ Existing Leveling Binder (Variable 1/2 "-1")
- ⑭ Existing Leveling Binder 3/4 "
- ⑮ Existing Aggregate Shoulder Wedge, Type B
- ⑯ Existing Strip Reflective Crack Control
- ⑰ Existing White Edgeline Stripe 4" *
- ⑱ Existing HMA Shoulder

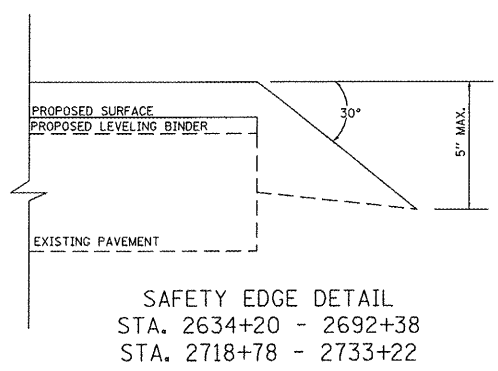
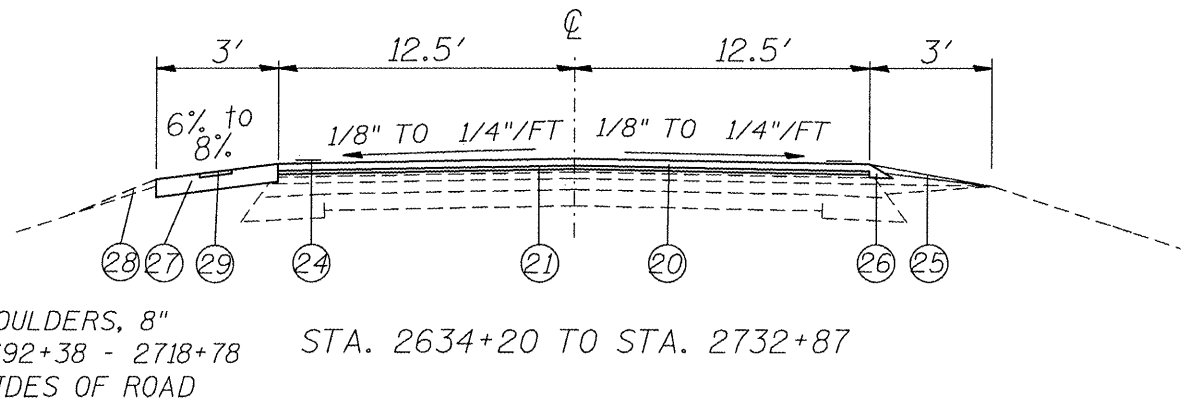
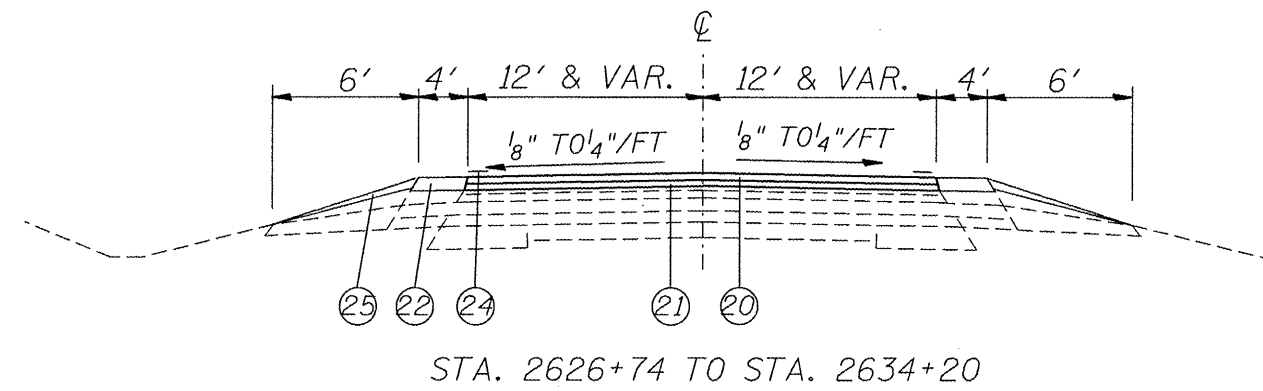
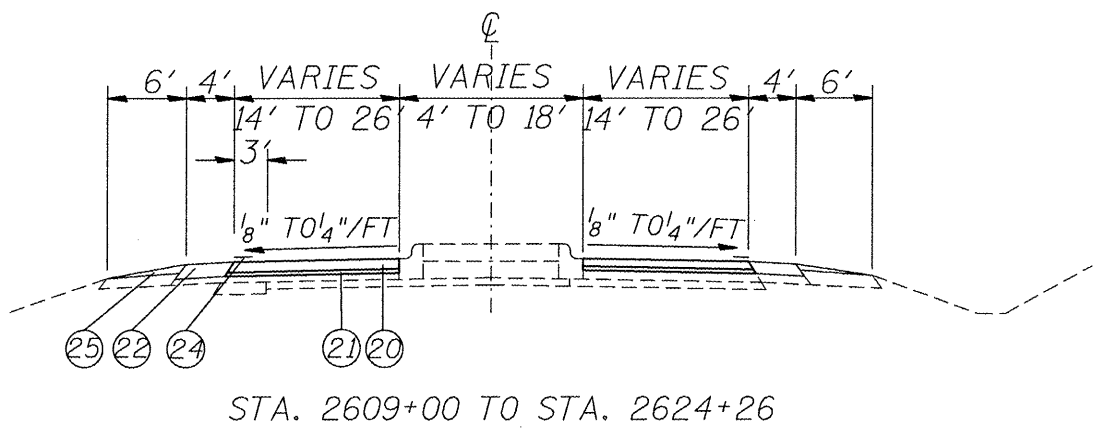
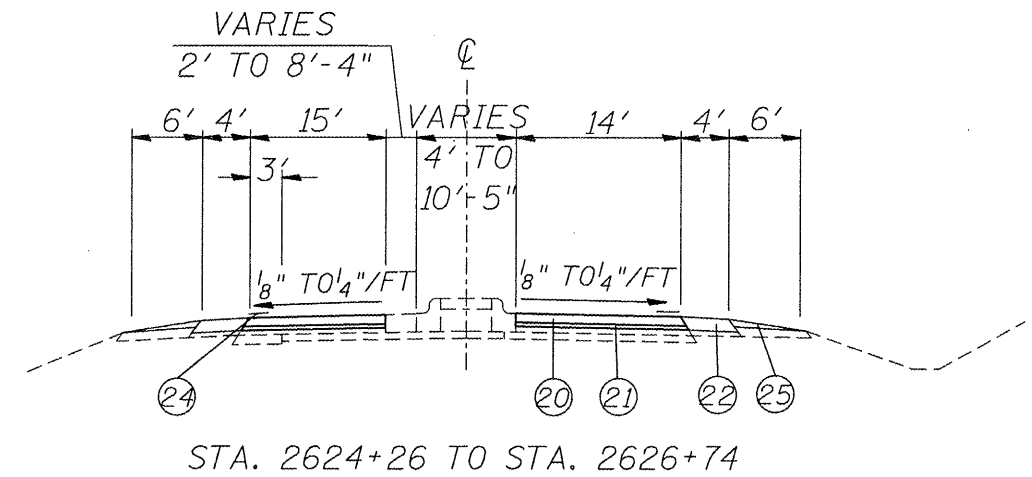
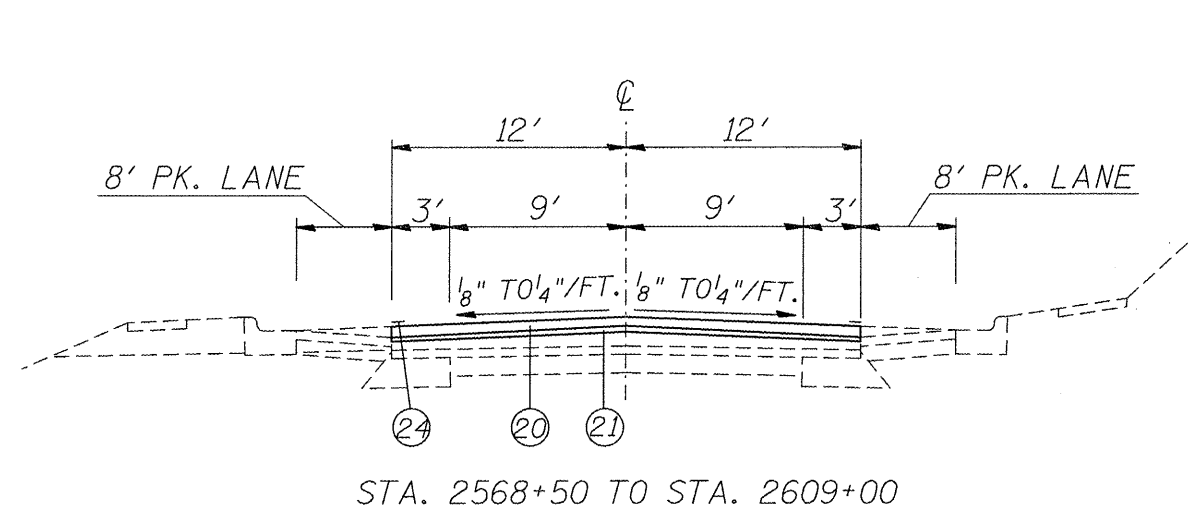
FILE NAME =	USER NAME = conoverpj	DESIGNED -	REVISED -
et:\pwork\pwork\conoverpj\d0212697\d8	6e52-sh1-plan.dgn	DRAWN -	REVISED -
	PLOT SCALE = 100.0000' / in.	CHECKED -	REVISED -
	PLOT DATE = 12/15/2011	DATE -	REVISED -

**STATE OF ILLINOIS
DEPARTMENT OF TRANSPORTATION**

EXISTING TYPICAL SECTIONS

SCALE: SHEET NO. 1 OF 1 SHEETS STA. TO STA.

F.A.P. RTE.	SECTION	COUNTY	TOTAL SHEETS	SHEET NO.
*322/821	(10-1,11)RS-3	WASHINGTON	18	6
FED. ROAD DIST. NO.	ILLINOIS FED. AID PROJECT	CONTRACT NO. 76E52		



LEGEND

- 20 Proposed HMA Surface Course, 1 1/2"
- 21 Proposed Leveling Binder, 3/4"
- 22 Proposed HMA Shoulder, 2 1/4"
- 23 OMIT
- 24 Proposed White Edgeline Stripe, 4"
- 25 Proposed Aggregate Shoulder Wedge, Type B
- 26 Proposed Safety Edge
- 27 Proposed HMA Shoulder, 8"
- 28 Proposed Furnished Excavation
- 29 Proposed Shoulder Rumble Strips

FILE NAME =	USER NAME = conoverpj	DESIGNED -	REVISED -
c:\pwwork\pwwork\conoverpj\d0212697\d0212697.dwg	6e52-sht-plan.dgn	DRAWN -	REVISED -
	PLOT SCALE = 100.0000' / 1"	CHECKED -	REVISED -
	PLOT DATE = 1/9/2012	DATE -	REVISED -

**STATE OF ILLINOIS
DEPARTMENT OF TRANSPORTATION**

PROPOSED TYPICAL SECTIONS	
SCALE:	SHEET NO. 1 OF 1 SHEETS
STA.	TO STA.

F.A.P. RTE.	SECTION	COUNTY	TOTAL SHEETS	SHEET NO.
•	(10-1,1URS-3	WASHINGTON	18	7
•322/821	CONTRACT NO. 76E52			
FED. ROAD DIST. NO.		ILLINOIS FED. AID PROJECT		

MAINLINE RESURFACING									
STATION	HMA SURFACE REMOVAL - BUTT JOINT	TEMPORARY RAMP	HMA SURFACE REMOVAL, 2 1/4"	HMA SURFACE REMOVAL, 1/2"		BITUMINOUS MATERIALS (PRIME COAT)	AGGREGATE (PRIME COAT)	LEVELING BINDER (MM), N70	HMA SURFACE COURSE, MIX C, N70
	SQ YD	SQ YD	SQ YD	SQ YD		TON	TON	TON	TON
2568+50 - 2582+62		40.0	3765.3			2.36	11.3	158.1	316.3
RAILROAD OMISSION									
2582+72 - 2609+00		20.0	7008.0			4.38	21.1	294.3	588.7
2609+00 - 2626+74			6341.4			3.96	19.0	266.3	532.7
2626+74 - 2627+09			119.4			0.08	0.4	5.0	10.0
2627+09 - 2634+80				2355.8		1.48	7.0	98.9	197.9
2634+80 - 2732+87	97.2	20.8		27241.7		17.1	82	1144.1	2296.5
SAFETY EDGE									218.2
TOTALS	97.2	80.8	17234.1	29597.5		29.36	140.8	1966.7	4160.3

SIDEROAD & DRIVEWAY RESURFACING				
LOCATION	HMA SURFACE REMOVAL - BUTT JOINT	BITUMINOUS MATERIALS (PRIME COAT)	AGGREGATE (PRIME COAT)	INCIDENTAL HMA SURFACING
	SQ YD	TON	TON	TON
HOWARD SCHOOL RD.	55.6	0.02	0.08	7.0
ORCHARD RD.	55.6	0.02	0.08	7.0
OLD STATE RD.	55.6	0.02	0.08	7.0
DRIVEWAYS		0.01	0.05	3.3
TOTALS	166.8	0.07	0.29	24.3

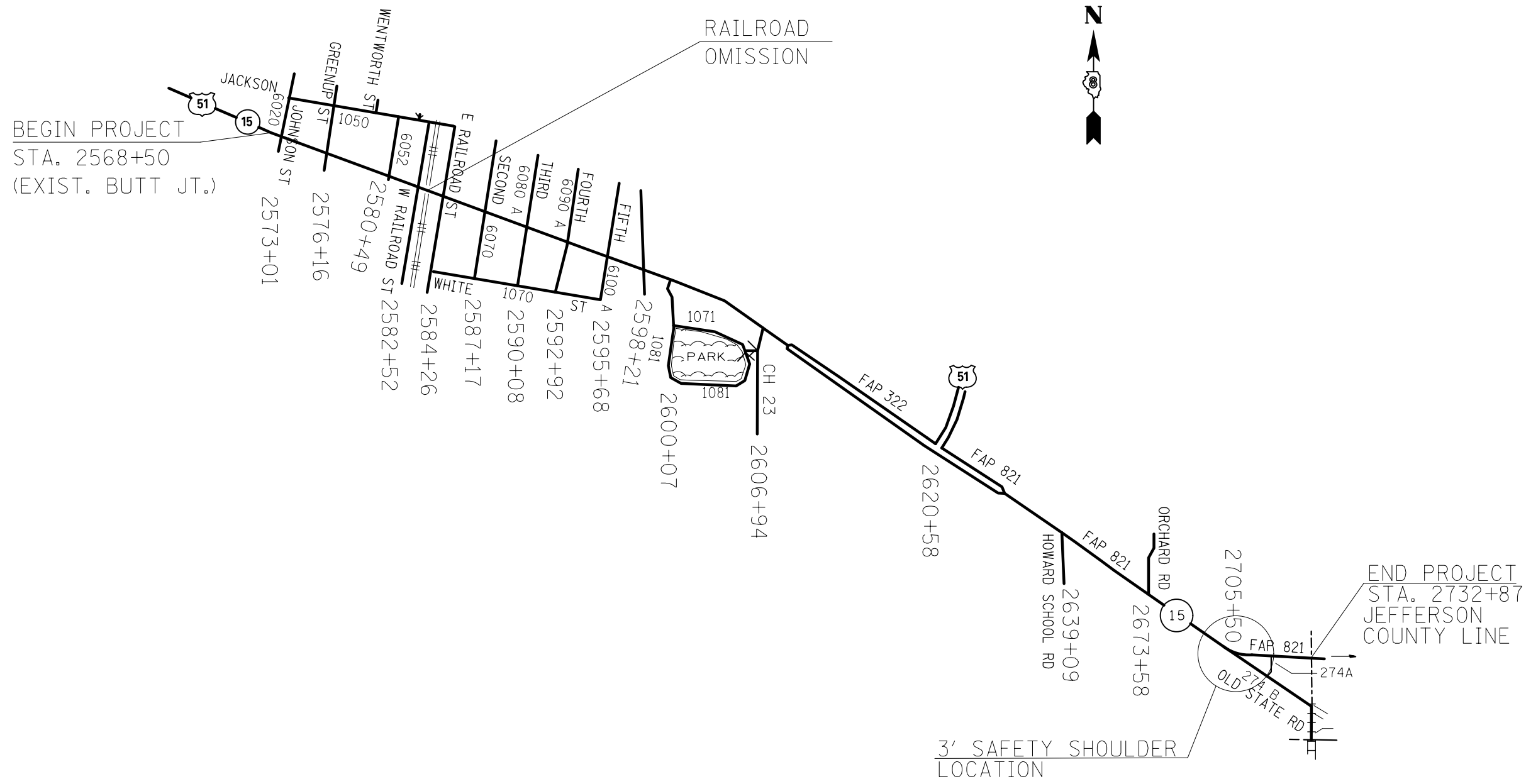
FILE NAME =	USER NAME = conoverpj	DESIGNED -	REVISED -	STATE OF ILLINOIS DEPARTMENT OF TRANSPORTATION	SCHEDULES OF QUANTITIES			F.A.P. RTE.	SECTION	COUNTY	TOTAL SHEETS	SHEET NO.
c:\pvc\work\pvdot\conoverpj\d0212697\d0212697	7652-sht-plan.dgn	DRAWN -	REVISED -					•	(10-1,11)RS-3	WASHINGTON	18	8
PLOT SCALE = 1/8" = 100.0000' / 1"	CHECKED -	REVISED -	REVISED -		*322/821	CONTRACT NO. 76E52						
PLOT DATE = 1/9/2012	DATE -	REVISED -	REVISED -		FED. ROAD DIST. NO. [ILLINOIS] FED. AID PROJECT							

SHOULDER RESURFACING								
STATION	HMA SURFACE REMOVAL, 1/2"	BITUMINOUS MATERIALS (PRIME COAT)	HMA SHOULDERS, 2 1/4"	HMA SHOULDERS, 8"	EARTH EXCAVATION (WIDENING)	FURNISHED EXCAVATION	SHOULDER RUMBLE STRIPS, 8 INCH	AGGREGATE WEDGE SHOULDER, TYPE B
	SQ YD	TON	TON	SQ YD	CU YD	CU YD	FOOT	TON
RT. 2609+00 - 2634+20	1108.9	0.35	139.7					121.2
RT. 2634+20 - 2732+53								575.2
LT. 2609+00 - 2618+56	413.8	0.13	52.1					45.2
LT. 2622+28 - 2634+80	529.8	0.17	66.8					60.8
LT. 2634+80 - 2732+53				1735.0	305.6	142.4	4618	575.2
TOTALS	2052.5	0.65	258.6	1735.0	305.6	142.4	4618	1377.6

EROSION CONTROL FOR SAFETY SHOULDERS					
TEMP. EROSION CONTROL SEEDING	SEEDING, CLASS 2	MULCH, METHOD 2	NITROGEN FERTILIZER NUTRIENT	PHOSPHOROUS FERTILIZER NUTRIENT	POTASSIUM FERTILIZER NUTRIENT
POUND	ACRE	ACRE	POUND	POUND	POUND
63	0.7	1.4	63	63	63

FILE NAME =	USER NAME = conoverpj	DESIGNED -	REVISED -	STATE OF ILLINOIS DEPARTMENT OF TRANSPORTATION	SCHEDULES OF QUANTITIES			F.A.P. RTE.	SECTION	COUNTY	TOTAL SHEETS	SHEET NO.
c:\pw\work\p1dot\conoverpj\0212697\d976e52-sht-pln.dgn		DRAWN -	REVISED -					*	(10-1,11RS-3)	WASHINGTON	18	9
PLOT SCALE = 100.0000' / 1"		CHECKED -	REVISED -		*322/821	CONTRACT NO. 76E52						
PLOT DATE = 1/9/2012		DATE -	REVISED -		SCALE:	SHEET NO. 2 OF 3 SHEETS	STA.	TO STA.	FED. ROAD DIST. NO. ILLINOIS FED. AID PROJECT			

STATION	THERMOPLASTIC & TEMPORARY PAVEMENT MARKING												
	PARKING LANES, 4" (WHITE)	SKIP-DASH, 4" (YELLOW)	NO PASS, 4" (YELLOW)	TURN LANE, 4" (WHITE)	EDGE LINE, 4" (WHITE)	MEDIAN, 4" (YELLOW)	STOP BARS, 24" (WHITE)	LETTERS & SYMBOLS, RR (WHITE)	LETTERS & SYMBOLS, TURN ARROWS (WHITE)	RRPM REMOVAL	RRPM 1-WAY CRYSTAL	RRPM 2-WAY AMBER	
	FOOT	FOOT	FOOT	FOOT	FOOT	FOOT	FOOT	SQ FT	SQ FT	EACH	EACH	EACH	
2568+50 - 2579+06	2112	260								13		13	
2579+06 - 2582+67	722	90	361				36	61.2		5		5	
2582+67 - 2584+34		40	167				36	61.2		2		2	
2584+34 - 2589+62		130	528							7		7	
2589+62 - 2605+46		400	1584							20		20	
2605+46 - 2609+00		90								3		3	
2609+00 - 2625+74				400	3348	3348			31.2	11	11		
2625+74 - 2636+08		260	1034		2068					12		12	
2636+08 - 2660+90		620			4964					31		31	
2660+90 - 2674+10		330	1320		2640					17		17	
2674+10 - 2675+69			318		318					2		2	
2675+69 - 2683+60		200	791		1582					10		10	
2683+60 - 2695+22		290			2324					14		14	
2695+22 - 2706+84		290	1162		2324					14		14	
2706+84 - 2722+15			3062		3062					19		19	
2722+15 - 2733+22		280	1107		2214					13		14	
SUB-TOTALS	2834	3280	11434	400	24844	3348	72	122.4	31.2	193	11	183	
TOTALS	46140							72	153.6		193		194

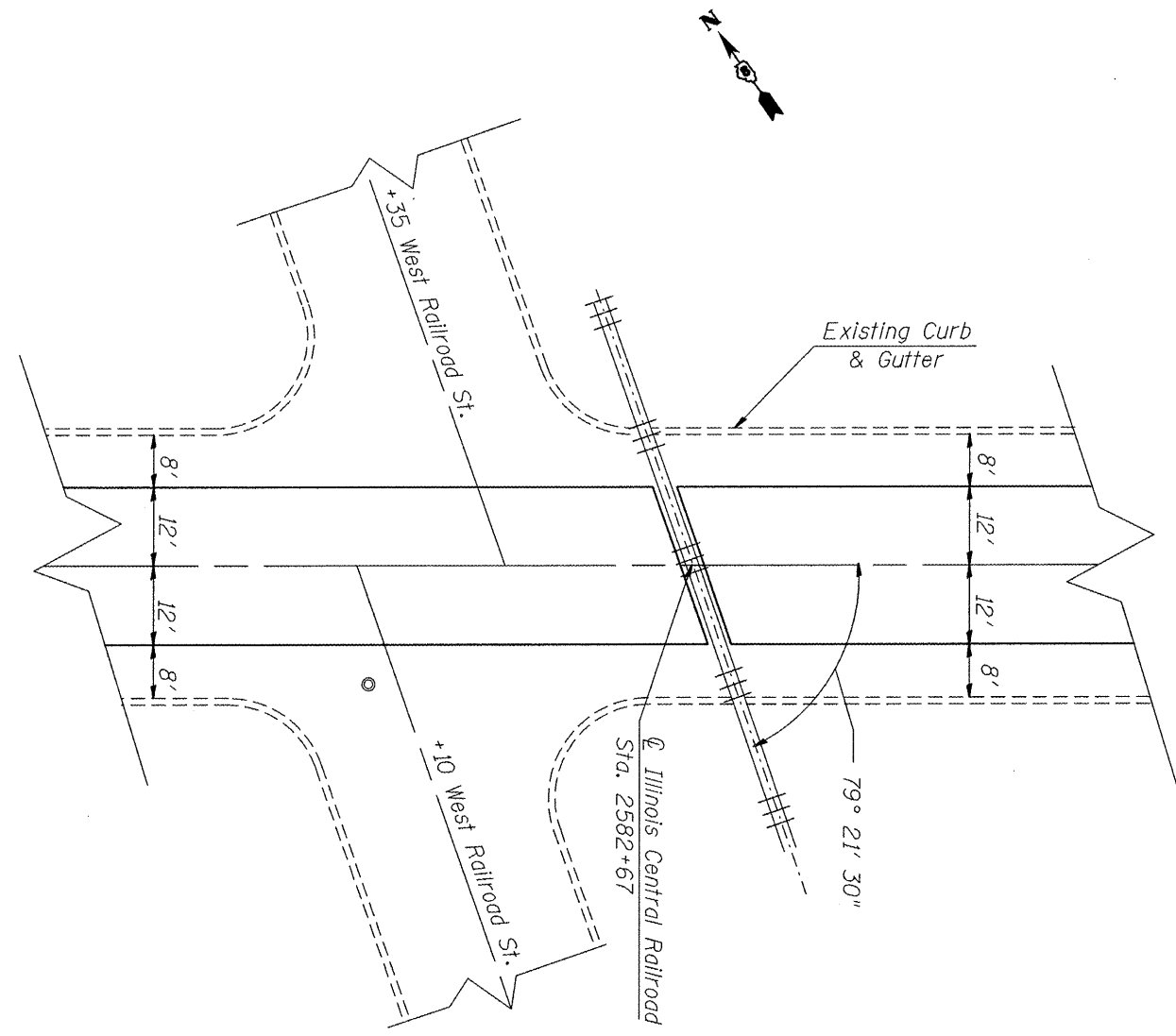


FILE NAME =	USER NAME = conoverpj	DESIGNED -	REVISED -
et:\pwork\pwork\conoverpj\d0212697\d876e52-sh-t-plan.dgn		DRAWN -	REVISED -
	PLOT SCALE = 100.0000' / in.	CHECKED -	REVISED -
	PLOT DATE = 12/15/2011	DATE -	REVISED -

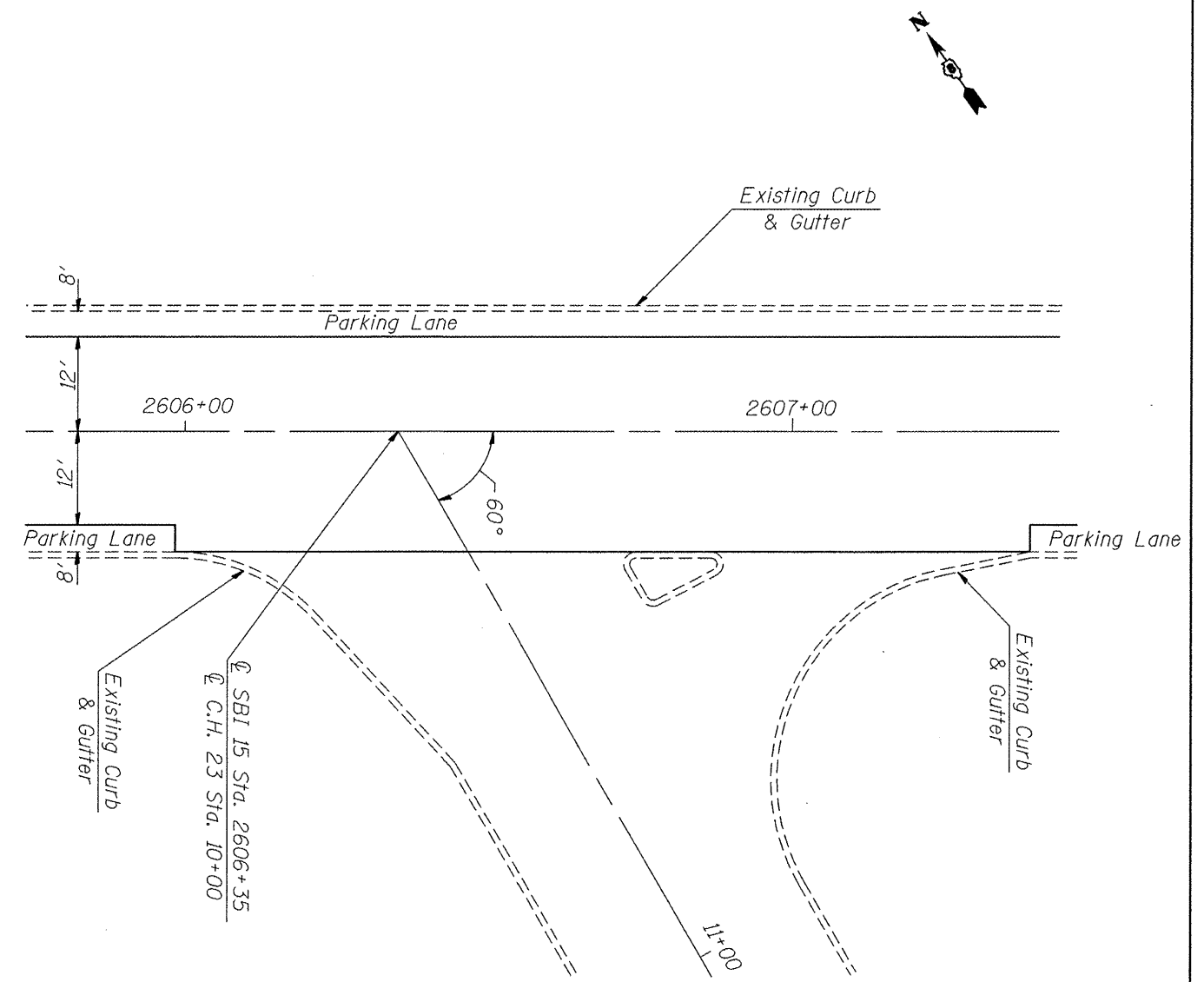
**STATE OF ILLINOIS
DEPARTMENT OF TRANSPORTATION**

LINE DIAGRAM			
SCALE:	SHEET NO. 1 OF 1 SHEETS	STA.	TO STA.

F.A.P. RTE.	SECTION	COUNTY	TOTAL SHEETS	SHEET NO.
• 322/821	(10-1,11)RS-3	WASHINGTON	18	11
FED. ROAD DIST. NO.	ILLINOIS FED. AID PROJECT	CONTRACT NO. 76E52		



IL 15 • RR



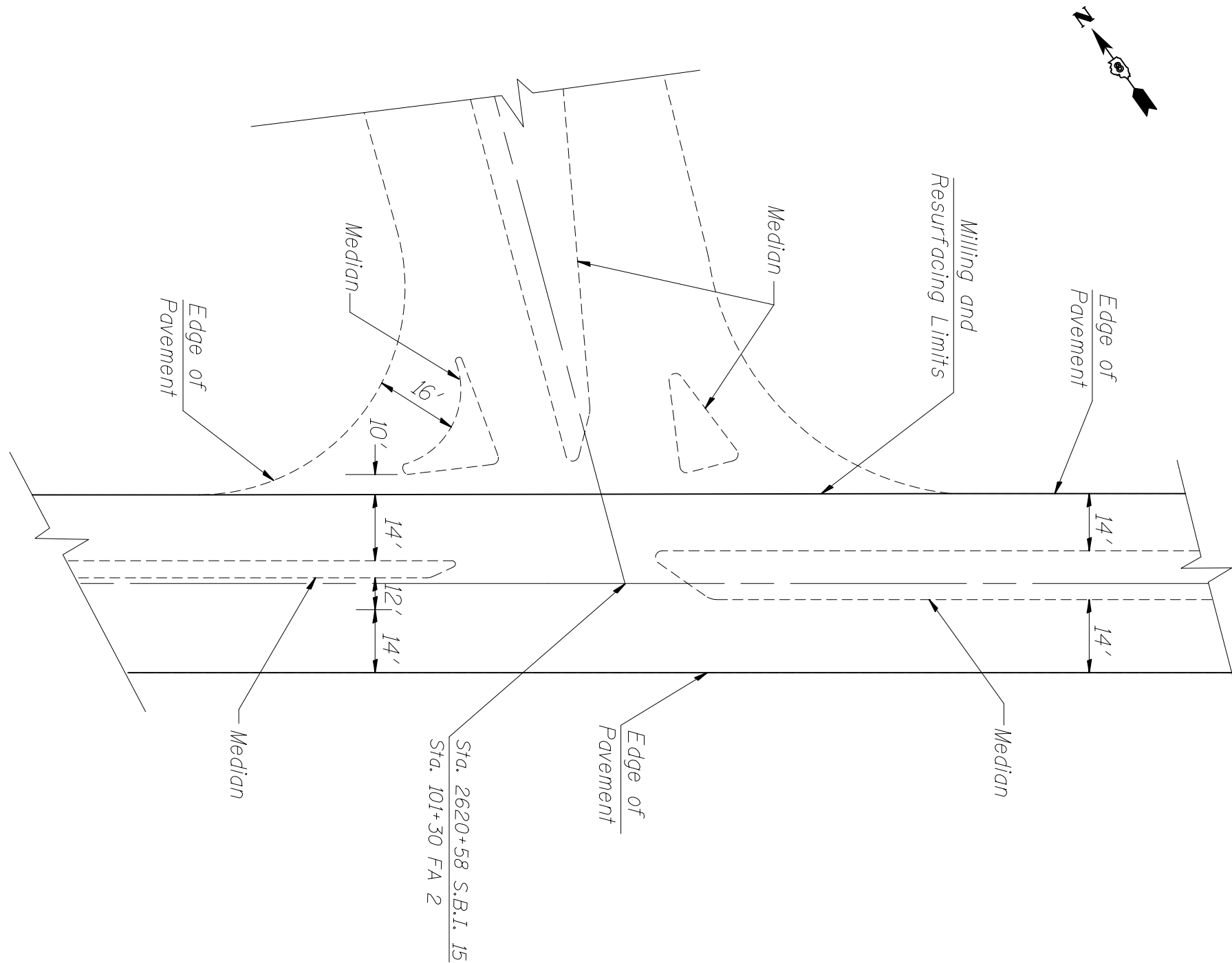
IL 15 & CH 23

FILE NAME =	USER NAME = conoverpj	DESIGNED -	REVISED -
et:\pwork\pwidot\conoverpj\d0212697\d076e52-sht-pln.dgn		DRAWN -	REVISED -
	PLOT SCALE = 100.0000' / 1in.	CHECKED -	REVISED -
	PLOT DATE = 1/9/2012	DATE -	REVISED -

**STATE OF ILLINOIS
DEPARTMENT OF TRANSPORTATION**

PAVING DETAILS	
SCALE:	STATIONING
SHEET NO. 1 OF 2 SHEETS	STA. TO STA.

F.A.P. RTE.	SECTION	COUNTY	TOTAL SHEETS	SHEET NO.
•	(10-1,11)RS-3	WASHINGTON	18	12
•322/821		CONTRACT NO. 76E52		
FED. ROAD DIST. NO. ILLINOIS FED. AID PROJECT				



IL 15 • US 51

FILE NAME =	USER NAME = conoverpj	DESIGNED -	REVISED -
et:\pw\work\p\dot\conoverpj\d0212697\d8	76e52-sh1-plan.dgn	DRAWN -	REVISED -
	PLOT SCALE = 100.0000' / in.	CHECKED -	REVISED -
	PLOT DATE = 12/15/2011	DATE -	REVISED -

STATE OF ILLINOIS
DEPARTMENT OF TRANSPORTATION

PAVING DETAILS

SCALE: SHEET NO. 2 OF 2 SHEETS STA. TO STA.

F.A.P. RTE.	SECTION	COUNTY	TOTAL SHEETS	SHEET NO.
•	(10-1,11)RS-3	WASHINGTON	18	13
•322/821		CONTRACT NO. 76E52		
FED. ROAD DIST. NO.	ILLINOIS	FED. AID PROJECT		

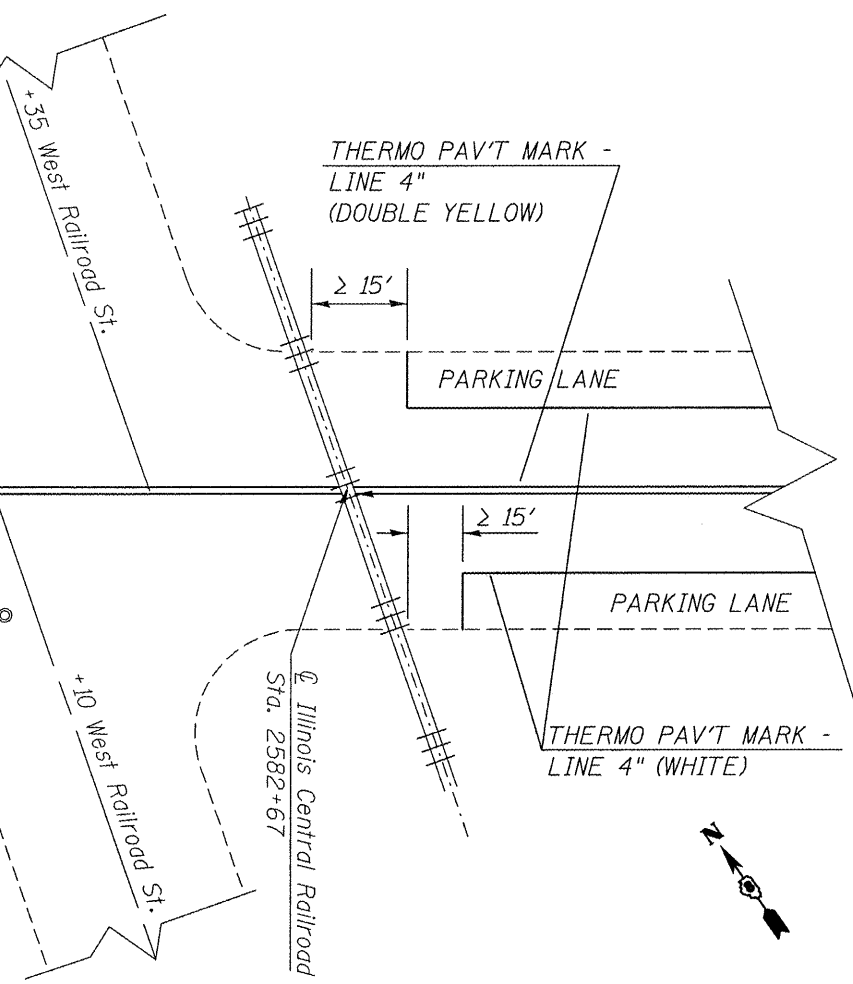
THERMO PAV'T MARK -
LINE 4" (WHITE)

PARKING LANE

PARKING LANE

NOTE: @ RRPM'S @ 80' SPACING

IL 15 @ RR

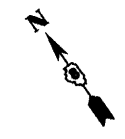


THERMO PAV'T MARK -
LINE 4" (DOUBLE YELLOW)

PARKING LANE

PARKING LANE

THERMO PAV'T MARK -
LINE 4" (WHITE)



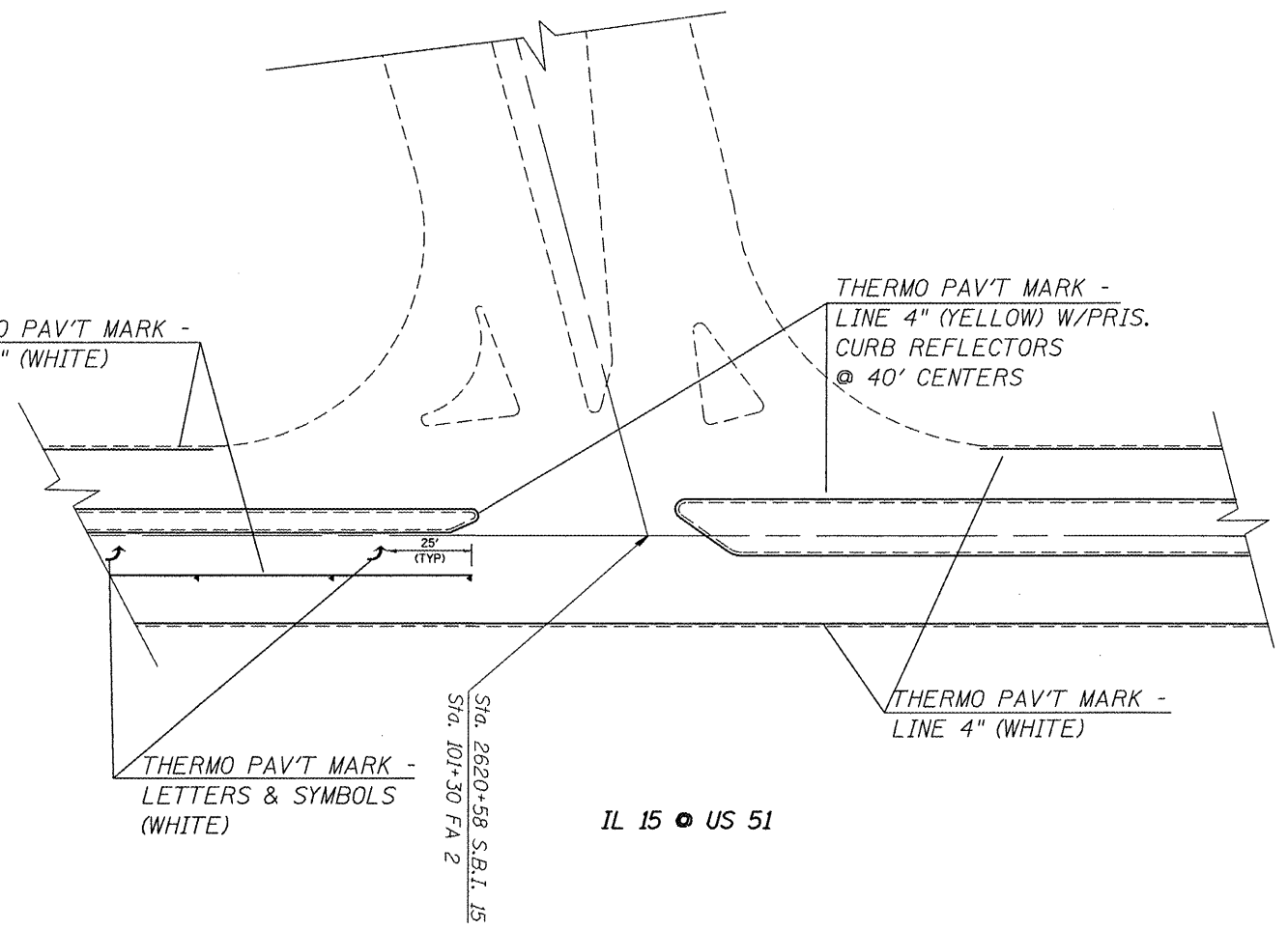
THERMO PAV'T MARK -
LINE 4" (WHITE)

THERMO PAV'T MARK -
LETTERS & SYMBOLS
(WHITE)

THERMO PAV'T MARK -
LINE 4" (YELLOW) W/PRIS.
CURB REFLECTORS
@ 40' CENTERS

THERMO PAV'T MARK -
LINE 4" (WHITE)

IL 15 @ US 51



THERMO PAV'T MARK -
LINE 24" (WHITE)

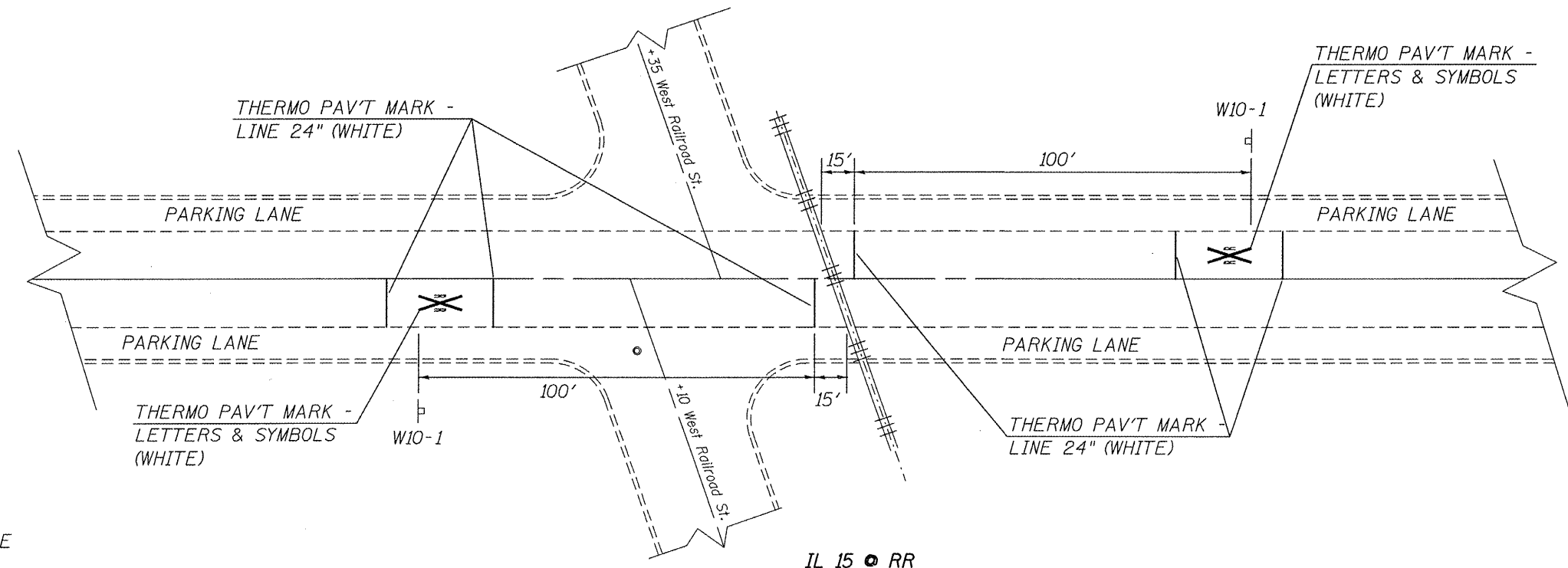
PARKING LANE

PARKING LANE

THERMO PAV'T MARK -
LETTERS & SYMBOLS
(WHITE)

W10-1

IL 15 @ RR



NOTE: JEFF ABEL (TRAFFIC OPS) WILL BE RESPONSIBLE FOR THE SIGNS (W10-1).

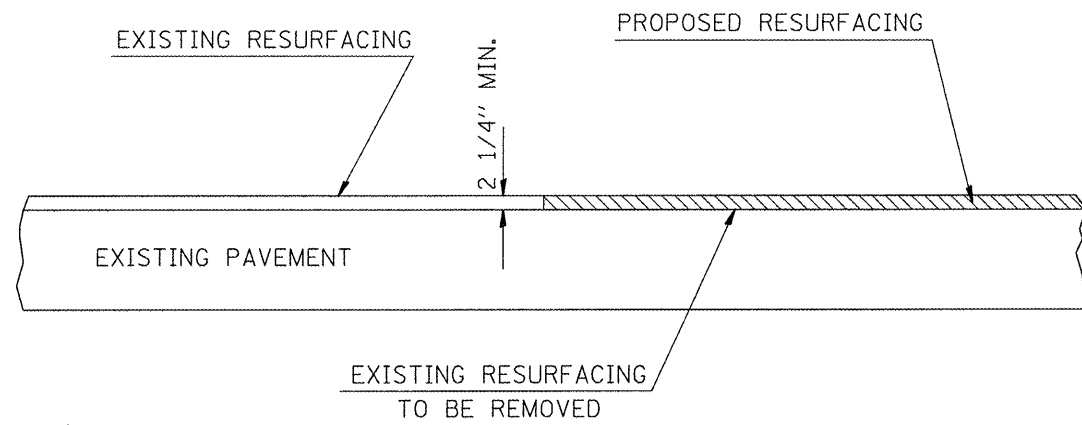
FILE NAME =	USER NAME = oonoverpj	DESIGNED -	REVISED -
er:\pwork\pwidot\oonoverpj\d0212697\d0212697	6652-sht-plan.dgn	DRAWN -	REVISED -
	PLOT SCALE = 100.0000' / 1" =	CHECKED -	REVISED -
	PLOT DATE = 1/9/2012	DATE -	REVISED -

STATE OF ILLINOIS
DEPARTMENT OF TRANSPORTATION

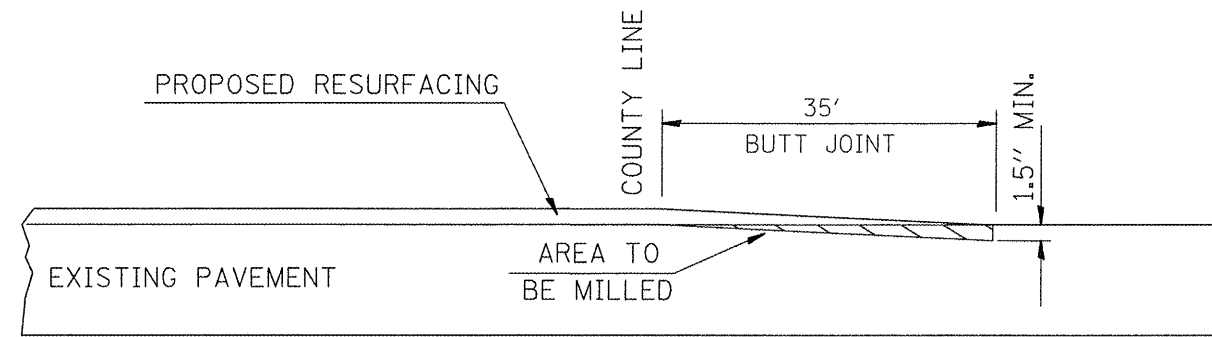
STRIPING DETAILS

SCALE: SHEET NO. 1 OF 1 SHEETS STA. TO STA.

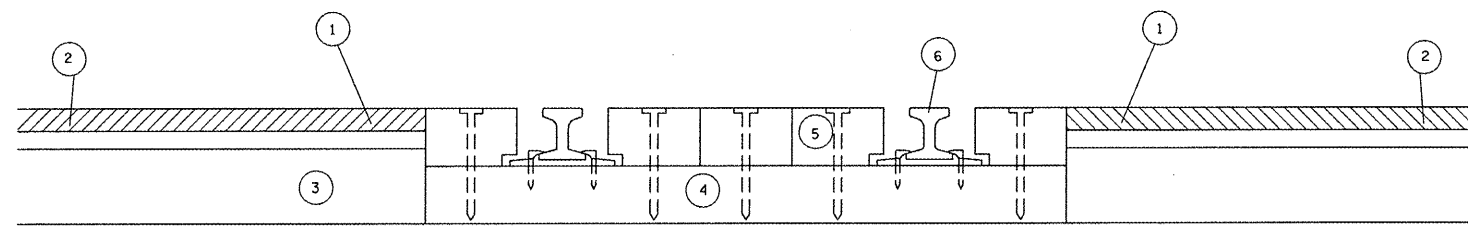
F.A.P. RTE.	SECTION	COUNTY	TOTAL SHEETS	SHEET NO.
322/821	(10-1,11)RS-3	WASHINGTON	18	14
FED. ROAD DIST. NO.		ILLINOIS FED. AID PROJECT		
		CONTRACT NO. 76E52		



JOINT @ BEGINNING OF PROJECT

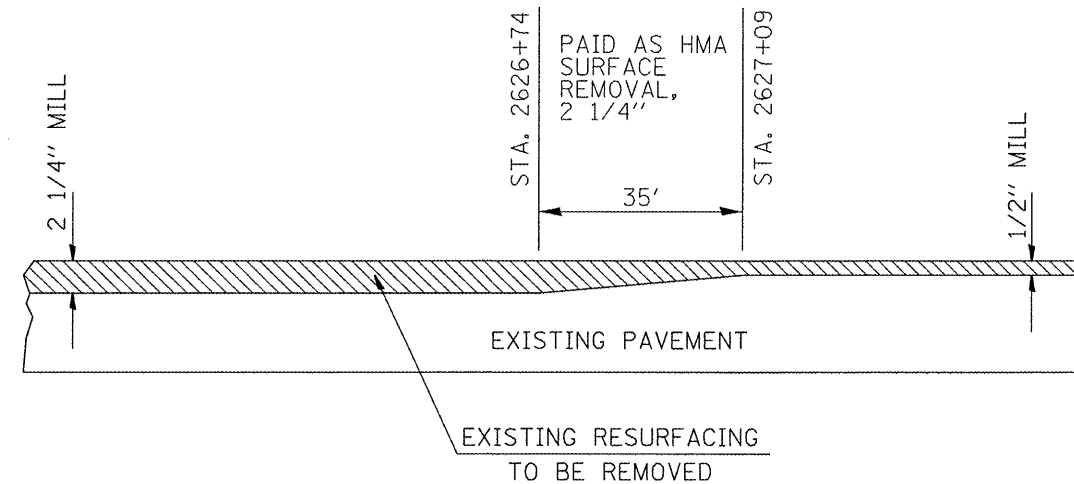


BUTT JOINT @ END OF PROJECT



JOINTS @ RAILROAD

- ① PROPOSED 2 1/4" MILLING
- ② PROPOSED 2-1/4" RESURFACING
- ③ EXISTING PAVEMENT
- ④ EXISTING RR TIES
- ⑤ EXISTING RR PLANKS
- ⑥ EXISTING RAIL



MILLING TRANSITION

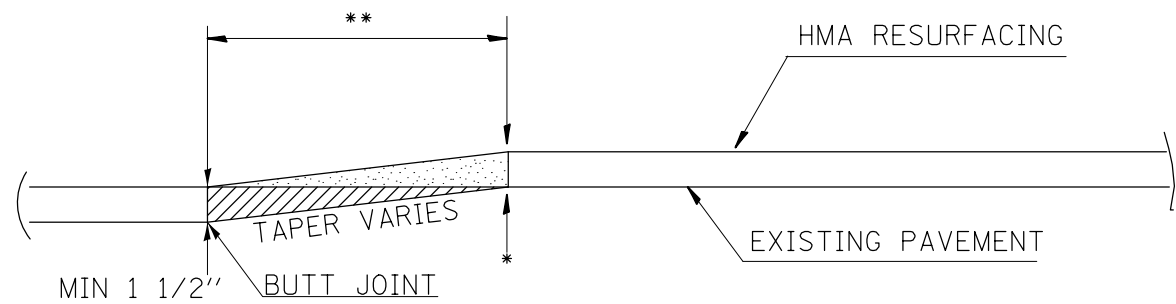
FILE NAME =	USER NAME = conoverpj	DESIGNED -	REVISED -
c:\pwwork\pwidot\conoverpj\d0212697.dwg	6e52-shh-plan.dgn	DRAWN -	REVISED -
	PLOT SCALE = 100.0000' / 1"	CHECKED -	REVISED -
	PLOT DATE = 1/9/2012	DATE -	REVISED -

**STATE OF ILLINOIS
DEPARTMENT OF TRANSPORTATION**

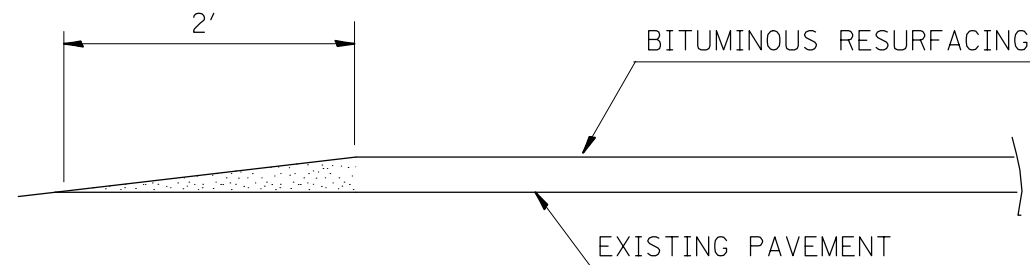
BUTT JOINT & MILLING DETAILS

SCALE: SHEET NO. 1 OF 2 SHEETS STA. TO STA.

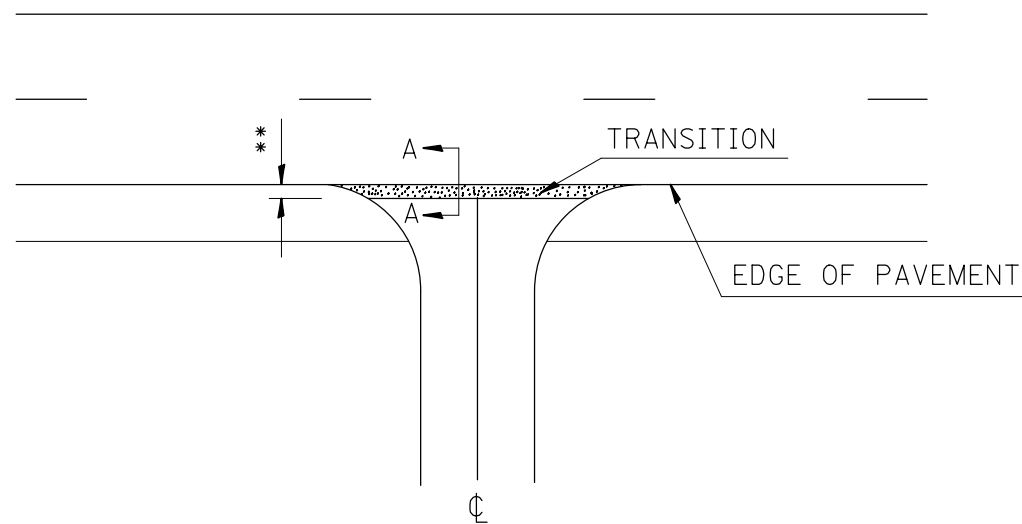
F.A.P. RTE.	SECTION	COUNTY	TOTAL SHEETS	SHEET NO.
•	(10-1,11)RS-3	WASHINGTON	18	15
*322/821		CONTRACT NO. 76E52		
FED. ROAD DIST. NO. ILLINOIS FED. AID PROJECT				



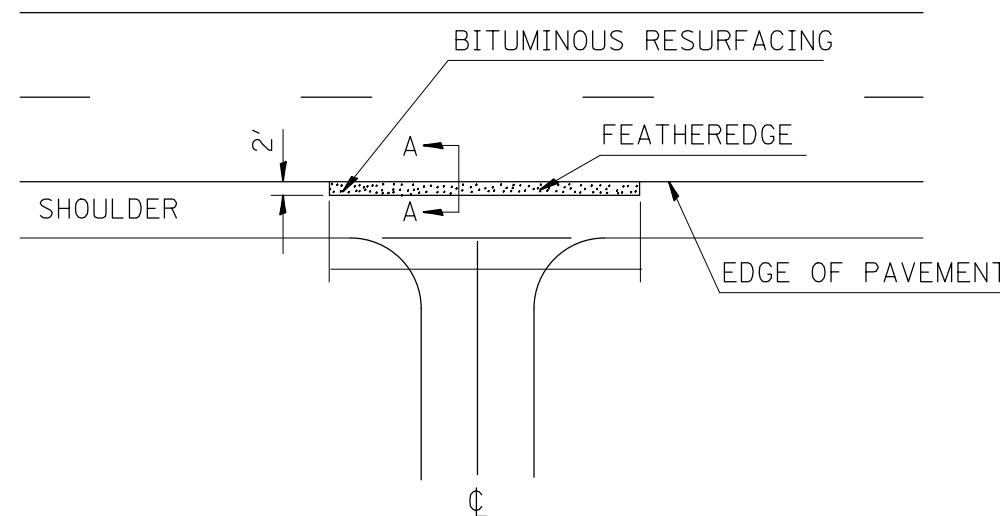
TRANSITION DETAIL
SECTION A-A
BUTT-JOINT ADDITION



FEATHEREDGE DETAIL
SECTION A-A



SIDEROAD DETAIL



ENTRANCE DETAIL

*EOP ELEVATION CHANGE	**TOTAL TRANSITION LENGTH
3/4"	3.5'
1"	5'
1-1/2"	7.5'
2"	10'
2-1/2"	12.5'
3"	15'
3-1/2"	17.5'
4"	20'
4-1/2"	22.5'
5"	25'
5-1/2"	27.5'
6"	30'

NOTE:
WHERE THE HMA TRANSITION IS MATCHING INTO AN EXISTING HMA SIDE ROAD SURFACE, A MILLED BUTT JOINT SHALL BE CONSTRUCTED WITHIN THE LIMITS OF THE TOTAL TRANSITION LENGTH ON THE LOCAL ROUTE.

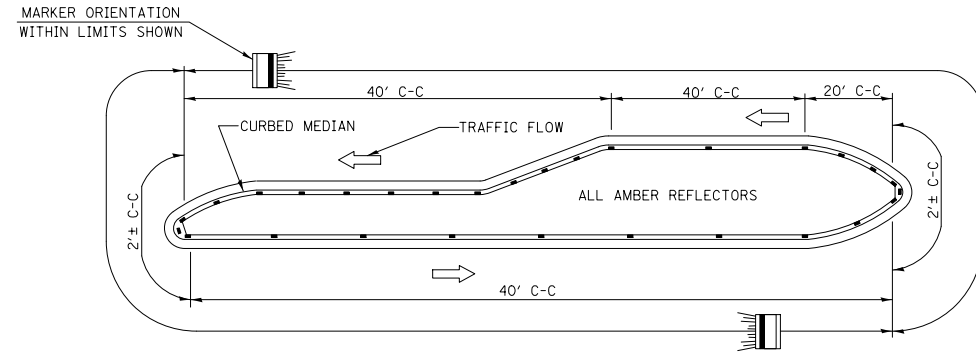
FILE NAME =	USER NAME = conoverpj	DESIGNED -	REVISED -
et:\pw\work\p\dot\conoverpj\d0212697\d8	6e52-sh-t-plan.dgn	DRAWN -	REVISED -
	PLOT SCALE = 100.0000' / in.	CHECKED -	REVISED -
	PLOT DATE = 12/15/2011	DATE -	REVISED -

STATE OF ILLINOIS
DEPARTMENT OF TRANSPORTATION

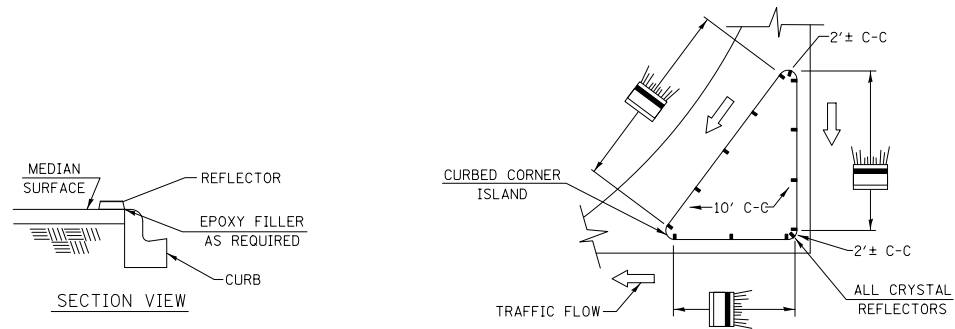
BUTT JOINT & MILLING DETAILS

SCALE: SHEET NO. 2 OF 2 SHEETS STA. TO STA.

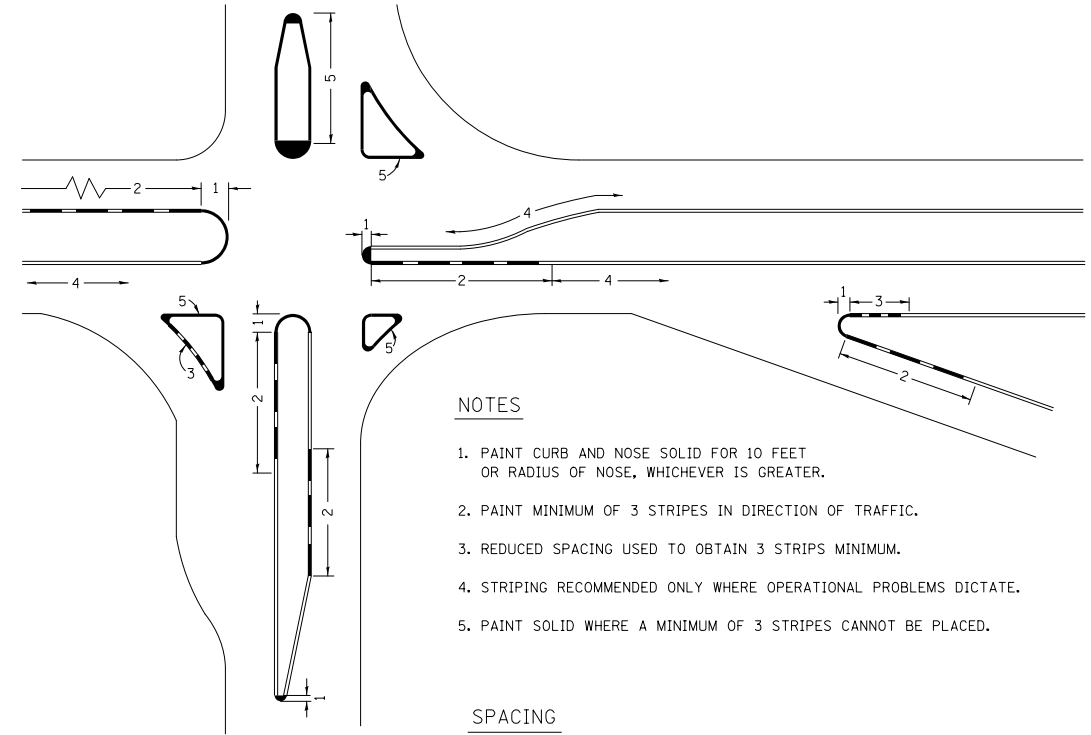
F.A.P. RTE.	SECTION	COUNTY	TOTAL SHEETS	SHEET NO.
*	(10-1,11)RS-3	WASHINGTON	18	16
*322/821	CONTRACT NO. 76E52			
FED. ROAD DIST. NO.	ILLINOIS FED. AID PROJECT			



- NOTES**
1. PRISMATIC REFLECTORS SHALL BE MONO-DIRECTIONAL AND POSITIONED SO THAT THE REFLECTIVE FACE IS FACING THE APPROACHING TRAFFIC.
 2. PRISMATIC REFLECTORS SHALL BE SECURED IN PLACE WITH AN EPOXY ADHESIVE.
 3. PRISMATIC REFLECTORS SHALL BE EITHER AMBER OR CRYSTAL IN COLOR.



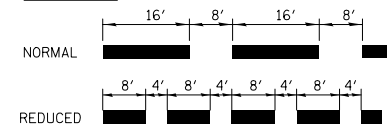
TYPICAL PLACEMENT OF PRISMATIC REFLECTORS ON CURBS
(NO SCALE)



NOTES

1. PAINT CURB AND NOSE SOLID FOR 10 FEET OR RADIUS OF NOSE, WHICHEVER IS GREATER.
2. PAINT MINIMUM OF 3 STRIPES IN DIRECTION OF TRAFFIC.
3. REDUCED SPACING USED TO OBTAIN 3 STRIPS MINIMUM.
4. STRIPING RECOMMENDED ONLY WHERE OPERATIONAL PROBLEMS DICTATE.
5. PAINT SOLID WHERE A MINIMUM OF 3 STRIPES CANNOT BE PLACED.

SPACING



CURB MARKING

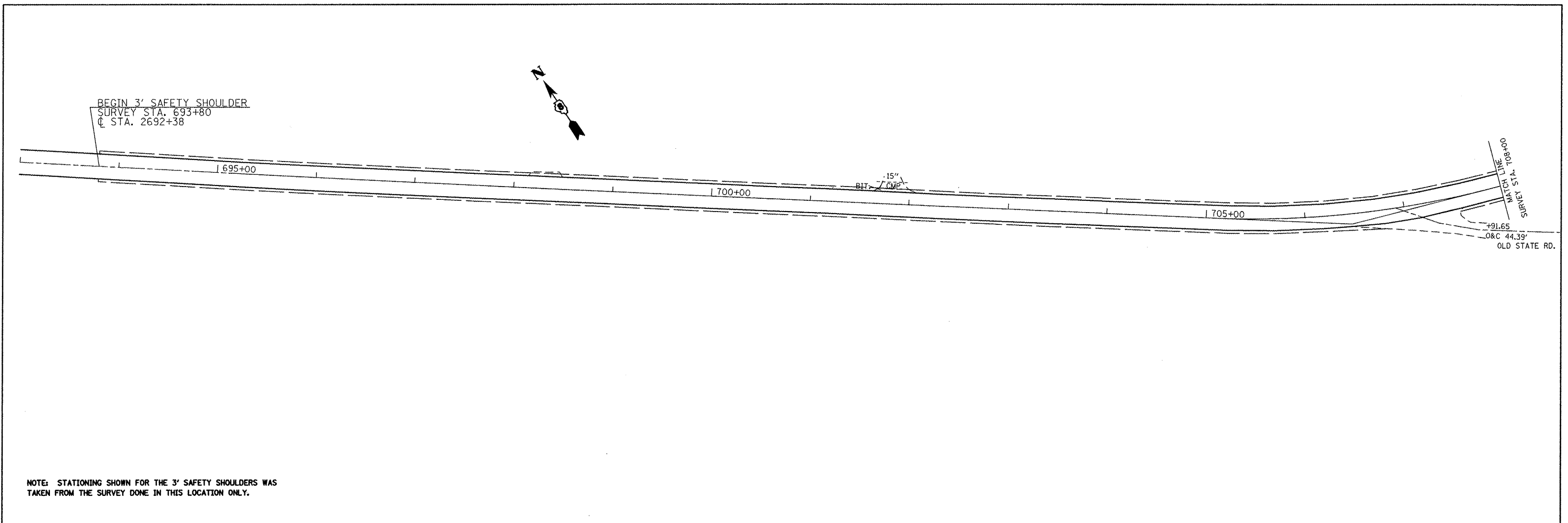
FILE NAME =	USER NAME = conoverpj	DESIGNED -	REVISED -
et:\pw\work\p\d0212697\d876e52-sh-t-plan.dgn		DRAWN -	REVISED -
	PLOT SCALE = 100.0000' / 1in.	CHECKED -	REVISED -
	PLOT DATE = 12/15/2011	DATE -	REVISED -

**STATE OF ILLINOIS
DEPARTMENT OF TRANSPORTATION**

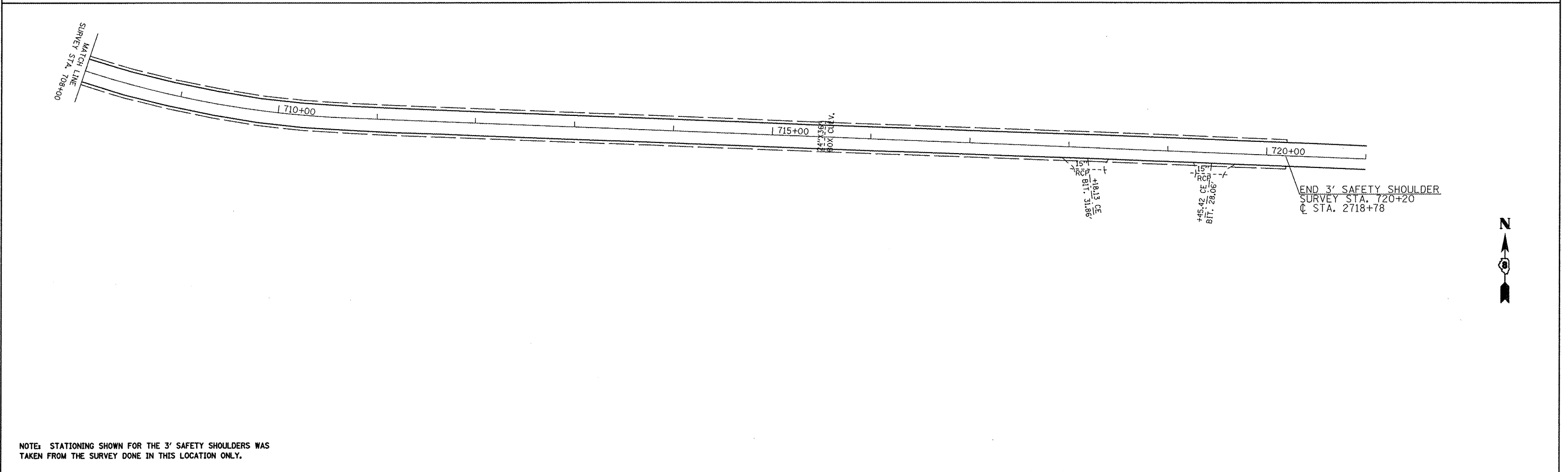
MISC. DETAILS

SCALE: SHEET NO. 1 OF 1 SHEETS STA. TO STA.

F.A.P. RTE.	SECTION	COUNTY	TOTAL SHEETS	SHEET NO.
*	(10-1,11)RS-3	WASHINGTON	18	17
*322/821			CONTRACT NO. 76E52	
FED. ROAD DIST. NO.	ILLINOIS FED. AID PROJECT			



NOTE: STATIONING SHOWN FOR THE 3' SAFETY SHOULDERS WAS TAKEN FROM THE SURVEY DONE IN THIS LOCATION ONLY.



NOTE: STATIONING SHOWN FOR THE 3' SAFETY SHOULDERS WAS TAKEN FROM THE SURVEY DONE IN THIS LOCATION ONLY.

FILE NAME =	USER NAME = conoverp.j	DESIGNED -	REVISED -
c:\pwwork\pwwork\conoverp.j\d0212697\d0652-sht-pl.dgn		DRAWN -	REVISED -
PLOT SCALE = 100.0000' / 1in.		CHECKED -	REVISED -
PLOT DATE = 1/9/2012		DATE -	REVISED -

**STATE OF ILLINOIS
DEPARTMENT OF TRANSPORTATION**

SAFETY SHOULDER LOCATIONS	
SCALE:	SHEET NO. 1 OF 1 SHEETS
STA.	TO STA.

F.A.P. RTE.	SECTION	COUNTY	TOTAL SHEETS	SHEET NO.
* 322/821	(10-1,11)RS-3	WASHINGTON	18	18
FED. ROAD DIST. NO.		ILLINOIS FED. AID PROJECT		
		CONTRACT NO. 76E52		