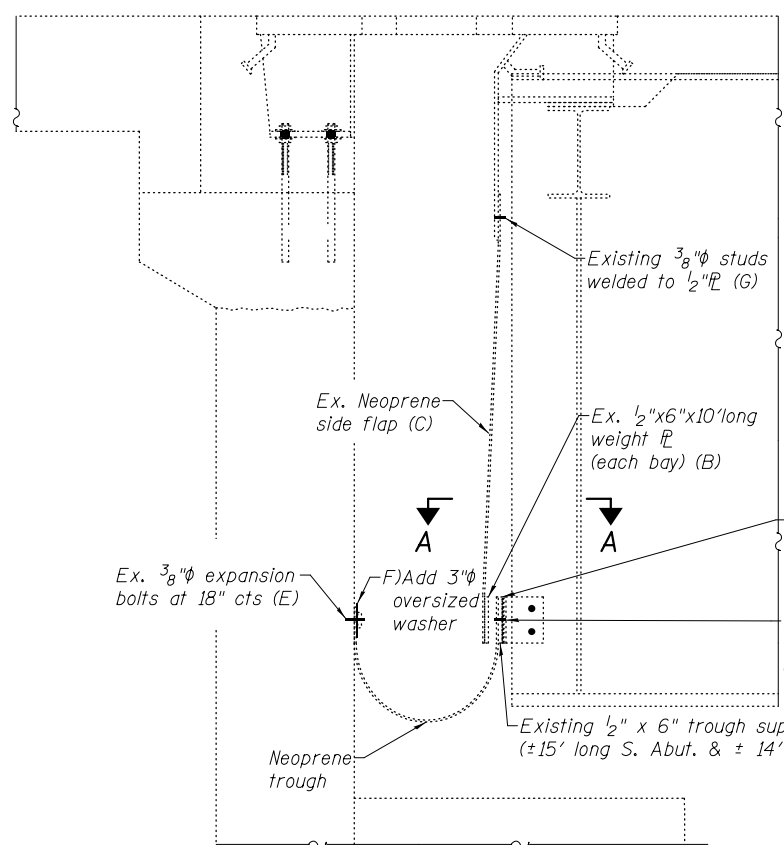


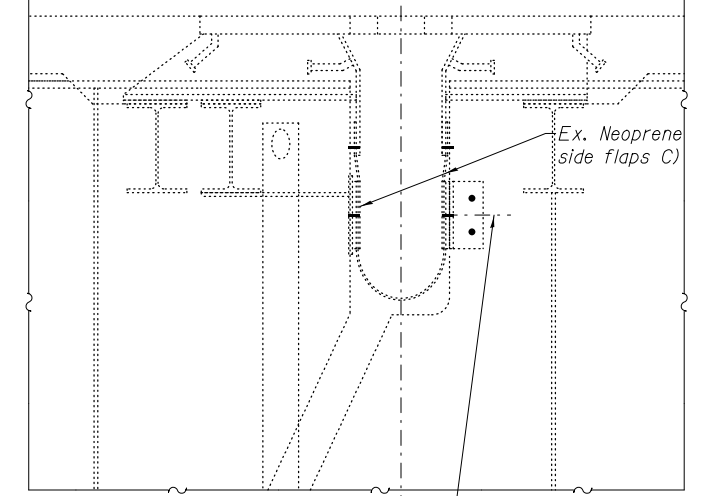
**REPAIRS**

- A) Replace all missing or loose 3/8"φ bolts connecting 1/2"x6" flange to the 1/2" connection "Tee" flanges. (7 bolts at N. abutment & 6 bolts at S. abutment & 23 bolts at piers are missing)
- B) Re-attach 1/2"x6"x10' long weight flange to bottom of neoprene side flap with 20-3/8"φ bolts at 6" cts. and 3"φ oversized washers in contact with the neoprene. (2 locations at S. abutment only)
- C) Lift neoprene side flap back into neoprene trough. (3 locations at abutments & 11 locations at piers)
- D) Field weld existing 1/2"x6" flange to the existing 1/2" connection "Tee" flanges at both abutments. The existing neoprene shall be shielded to prevent burning, melting, or damaging the neoprene. (28 locations at S. Abutment & 30 locations at N. Abutment)
- E) Replace loose or missing 3/8"φ expansion bolts connecting 1/4" x 2" full length flange to the abutment backwall. (3 locations at S. abutment & 3 locations at N. abutment)
- F) Remove all nuts and washers from the existing 3/8"φ expansion bolts in both abutment backwalls. Re-attach the nuts and washers with new oversized 3" washers in contact with the neoprene. All expansion bolts shall be cut off flush with the nut. (130 locations at S. abutment & 130 locations at N. abutment)
- G) Remove all nuts and washers from the existing 3/8"φ studs welded to the 1/2" flange. Re-attach the nuts and washers with new oversized 3" washers in contact with the neoprene. The washers shall have an inner hole diameter larger than the weld diameter, to allow full contact. (130 locations at S. abutment & 130 locations at N. abutment)
- H) Remove outer 40" of "bent back" portion of 1/2"x6" trough support flange at the outer 2 corners of each abutment, to allow cleaning and better trough drainage. See the detail on the next sheet. (2 locations at S. abutment & 2 locations at N. abutment)

— Locations of cleaning and painting.



**ABUTMENT SECTION**



**PIER SECTION**

DESIGNED - J. Uehle	EXAMINED	DATE - March 9, 2012
CHECKED - B. Williams	ENGINEER OF STRUCTURAL SERVICES	
DRAWN - J. Uehle	PASSED	
CHECKED - B. Williams	ENGINEER OF BRIDGES AND STRUCTURES	

**STATE OF ILLINOIS  
DEPARTMENT OF TRANSPORTATION**

**PAINTING AND TROUGH REPAIR LOCATIONS  
SN 082-0221**

SHEET NO. 3 OF 16 SHEETS

F.A.I. RTE.	SECTION	COUNTY	TOTAL SHEETS	SHEET NO.
255	82-6B-1	ST. CLAIR	18	5
CONTRACT NO. 76F44				
ILLINOIS FED. AID PROJECT				