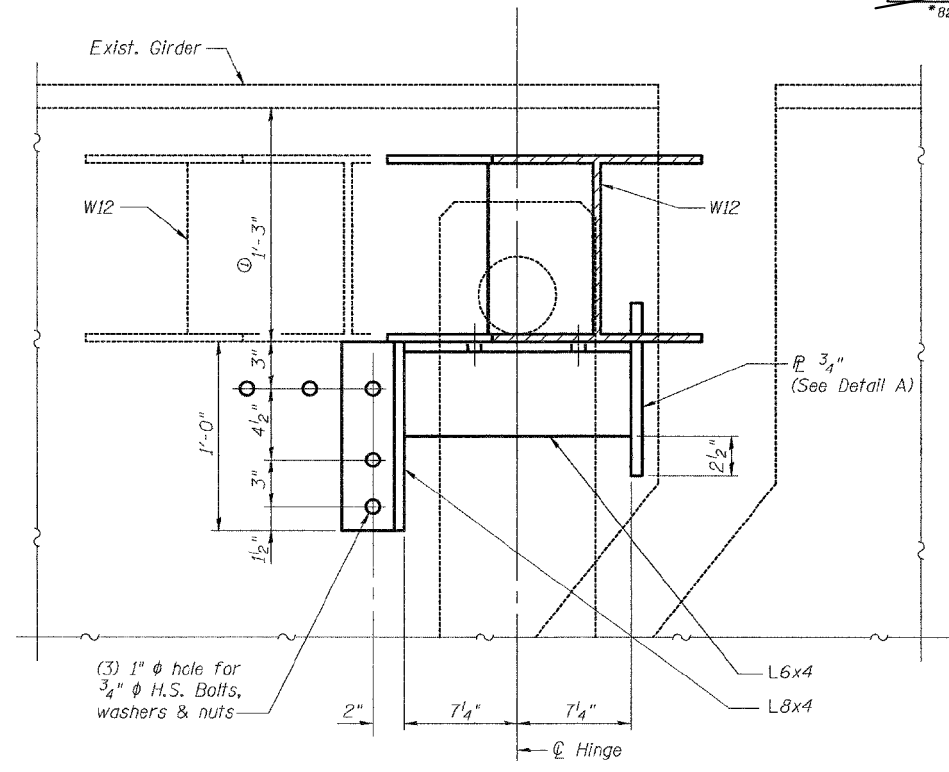
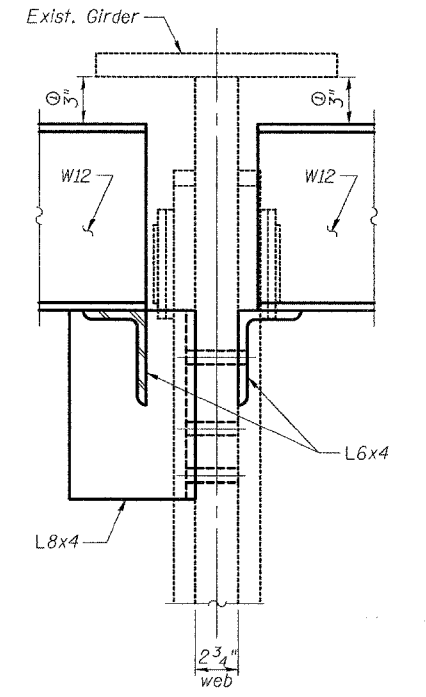


**PLAN-DIAPHRAGM
DI CONNECTION**



SECTION A-A

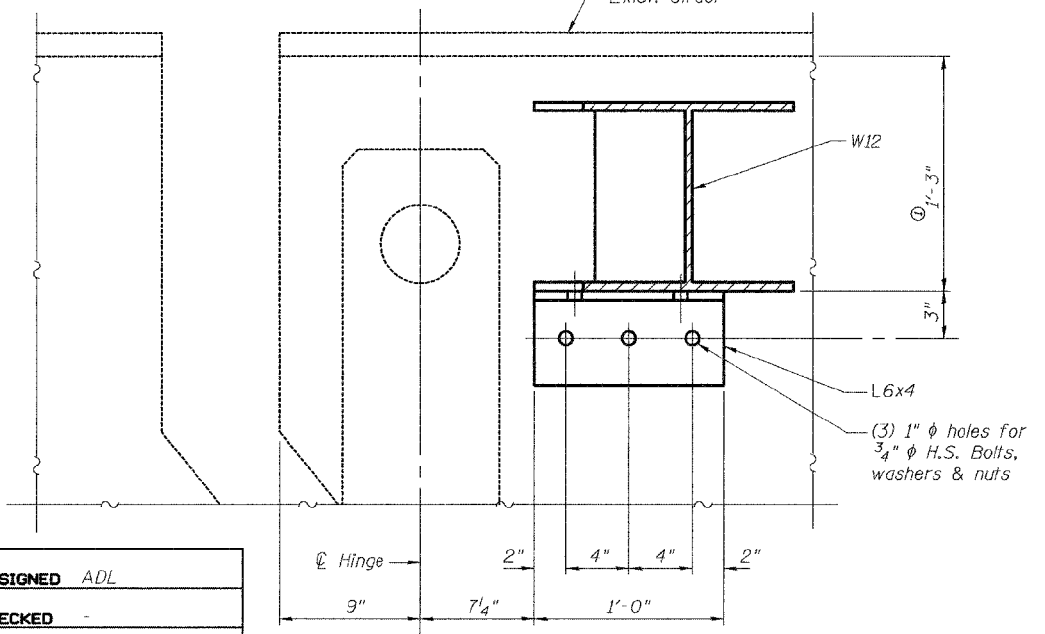
(Welded trough connection plate not shown for clarity)



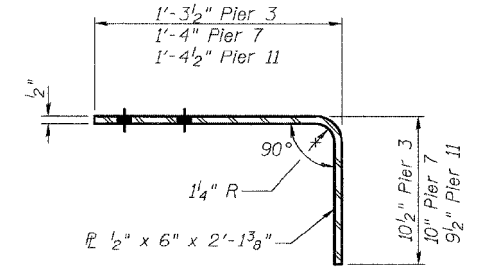
SECTION B-B

ⓐ Adjust dimension so that top of diaphragm (D1) matches top of existing diaphragm.

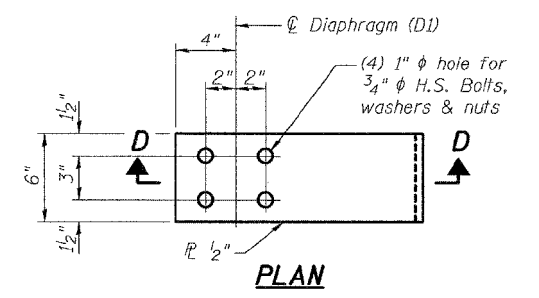
Notes:
Two hardened washers shall be required for all oversized holes.



SECTION C-C

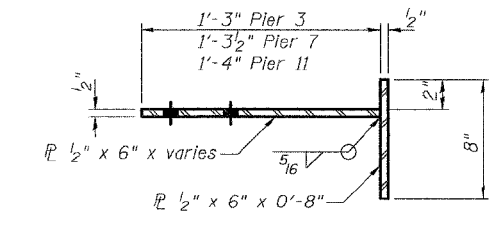


SECTION D-D

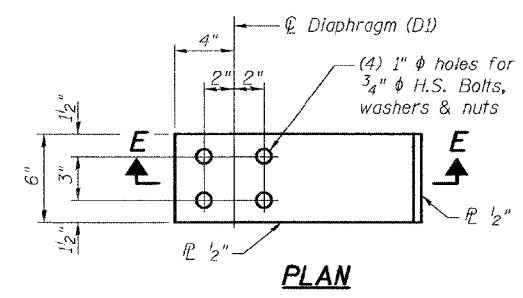


PLAN

BENT TROUGH CONNECTION PLATE DETAIL

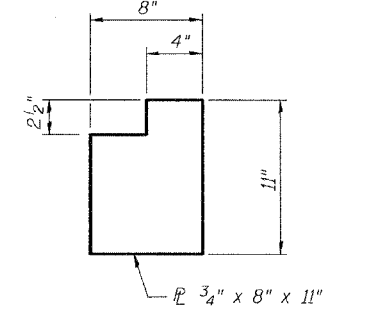


SECTION E-E



PLAN

WELDED TROUGH CONNECTION PLATE DETAIL



DETAIL A

DESIGNED	ADL
CHECKED	-
DRAWN	BGJ
CHECKED	-

EXAMINED	DATE	March 9, 2012
ENGINEER OF STRUCTURAL SERVICES		
PASSED		
ENGINEER OF BRIDGES AND STRUCTURES		

STATE OF ILLINOIS
DEPARTMENT OF TRANSPORTATION

FOR INFORMATION - 2004 PLANS - PIN AND LINK DETAILS
SN 082-0221

SHEET NO. 6 OF 16 SHEETS

F.A.I. RTE.	SECTION	COUNTY	TOTAL SHEETS	SHEET NO.
255	82-6B-1	ST. CLAIR	18	8
CONTRACT NO. 76F44				
ILLINOIS FED. AID PROJECT				

FOR INFORMATION ONLY

STRUCTURAL STEEL DETAILS
F.A.I. RTE. 255
SECTION 82-6B-11
STATION 556+80.00
ST. CLAIR COUNTY
SN 082-0221