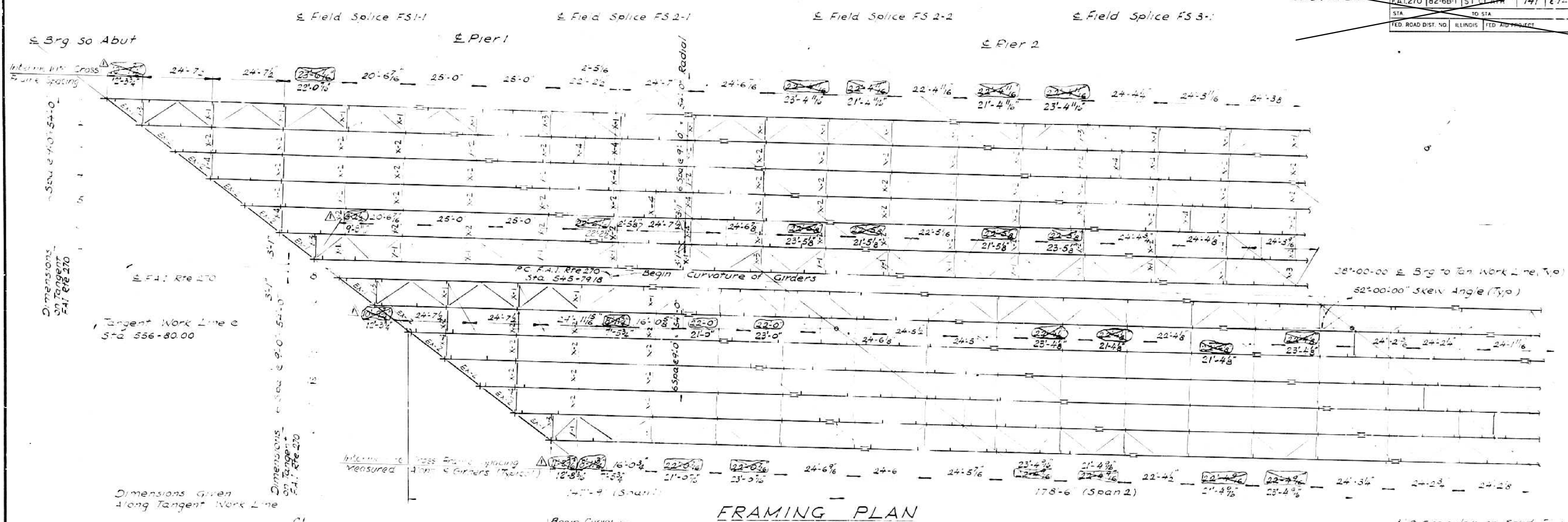
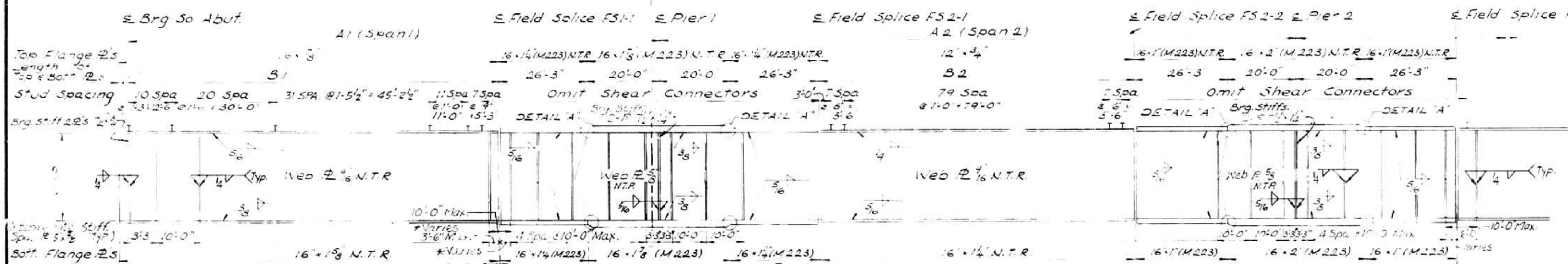


Sheet 547 of 516

FEDERAL AID ROUTE NO.	SECTION	COUNTY	TOTAL SHEETS	SHEET NO.
FAI 270	82-6B-1	ST. CLAIR	141	674
STA.	TO STA.	ILLINOIS	FED. AID PROJECT	



FRAMING PLAN



ELEVATION (GIRDER 1 SHOWN)

3" Granular or Sand Filled Headed Studs Automatically End Welded (By Others) (NO RECD-5476)



PLAN OF FLANGE WELD

GIRDER	DIMENSIONS			TOP OF WEB ELEVATIONS (')							
	A1	B1	C1	A2	B2	RADIUS	FS-1	PIER 1	FS 2-1	FS 2-2	PIER 2
1	107-10 1/2	172-1 3/8	185-8 1/8	93-2 7/8	34329.3844	436.896	437.453	437.372	437.866	438.267	438.336
2	107-10 1/2	164-0 3/8	185-7 3/8	93-1 1/8	34329.3844	437.144	437.613	437.811	438.102	438.497	438.566
3	107-10 1/2	151-8 3/8	185-6 1/8	93-0 1/4	34338.3844	437.349	437.893	438.007	438.295	438.686	438.755
4	107-10 1/2	139-4 3/8	185-5 1/8	92-11 3/8	34347.3844	437.337	437.874	437.985	438.271	438.659	438.727
5	107-10 1/2	127-1 3/8	185-4 3/8	92-10 3/8	34356.3844	437.238	437.770	437.879	438.161	438.546	438.614
6	107-10 1/2	114-9 3/8	185-3 3/8	92-9 1/8	34365.3844	437.093	437.619	437.723	438.004	438.387	438.455
7	107-10 1/2	102-5 3/8	185-2 3/8	92-8 3/8	34374.3844	436.779	437.324	437.401	437.678	438.053	438.127
8	107-10 1/2	94-0 3/8	185-1 1/8	92-7 3/8	34380.5510	436.798	437.361	437.437	437.711	438.092	438.159
9	107-10 1/2	81-8 3/8	185-0 3/8	92-6 3/8	34389.5510	437.237	437.790	437.863	438.135	438.515	438.582
10	107-10 1/2	69-4 3/8	184-11 3/8	92-5 3/8	34398.5510	437.500	438.050	438.120	438.389	438.769	438.836
11	107-10 1/2	57-1 3/8	184-10 1/8	92-4 1/8	34407.5510	437.721	438.263	438.330	438.598	438.978	439.045
12	107-10 1/2	44-9 3/8	184-9 3/8	92-3 3/8	34416.5510	437.855	438.390	438.455	438.721	439.101	439.167
13	107-10 1/2	32-5 3/8	184-7 3/8	92-1 3/8	34425.5510	437.773	438.300	438.362	438.628	439.008	439.074
14	107-10 1/2	20-1 3/8	184-6 3/8	92-0 3/8	34434.5510	437.647	438.187	438.227	438.493	438.873	438.939

NOTES:
 N.T.R. INDICATES PLATES THAT SHALL CONFORM TO THE SUPPLEMENTAL REQUIREMENTS FOR NOTCH TOUGHNESS (ZONE 2).
 UNLESS OTHERWISE NOTED DIMENSIONS ARE SHOWN ALONG THE CENTERLINE OF THE MEMBER.
 (1) FOR FABRICATION ONLY.
 FOR COORDINATES OF KEY OFFSETS SEE SHEET 59.
 ALL STRUCTURAL STEEL SHALL BE AASHTO M183 UNLESS NOTED.
 INTERIOR CROSS FRAMES, END CROSS FRAMES AND DIAPHRAGMS FOR SOUTH BOUND LANES AS SHOWN, NORTH BOUND LANES SIMILAR UNLESS NOTED.
 * SEE FRAMING PLAN
 Delocate Cross Frames Marked Thus

FOR INFORMATION ONLY

REVISIONS	
Name	Date
Cross Frames	10-25-02

STATE OF ILLINOIS
 DEPARTMENT OF TRANSPORTATION
 F.A.I. ROUTE 270
 SECTION 82-6B-1
 FAI ROUTE 270 OVER PRAIRIE DUPONT DIVERSION CHANNEL AND BLUE WATERS DITCH
STEEL FRAMING PLAN-SPAN 1 & SPAN 2
 County: St. Clair
 Date: _____
 Drawn By: Y Y
 Checked By: _____
 ENVIRODYNE ENGINEERS INC.
 Chicago, Illinois