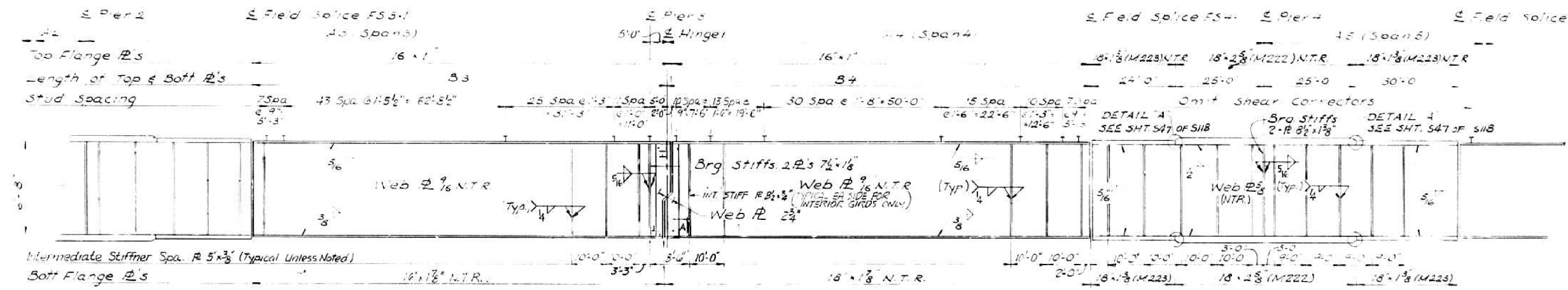
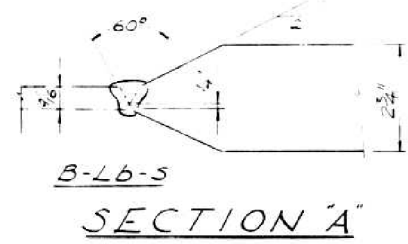


FRAMING PLAN

FOR INFORMATION ONLY



ELEVATION (GIRDER SHOWN)



GIRDER	GIRDER DIMENSIONS				RADIUS	TOP OF WEB ELEVATION [Ⓧ]				
	A3	B3	A4	B4		FS 3-1	PIERS 3	HINGE	FS 4-1	PIER 4
1	160'-3"	119'-2"	171'-6 3/8"	127'-6 3/8"	34320.3844	438.645	439.007	438.982	439.535	439.601
2	160'-7 1/2"	119'-7 1/2"	171'-5 3/8"	127'-5 3/8"	34329.3844	438.876	439.237	439.212	439.765	439.831
3	160'-3 3/8"	119'-0 3/8"	170'-4 3/8"	127'-4 3/8"	34338.3844	439.064	439.425	439.400	439.953	440.019
4	160'-2 1/2"	118'-11 1/2"	170'-3 3/8"	127'-3 3/8"	34347.3844	439.036	439.396	439.372	439.924	439.990
5	160'-1 5/8"	118'-10 5/8"	170'-2 1/2"	127'-2 1/2"	34356.3844	438.922	439.283	439.258	439.811	439.877
6	160'-0 7/8"	118'-9 7/8"	170'-1 1/2"	127'-1 1/2"	34365.3844	438.763	439.123	439.099	439.651	439.717
7	159'-1 1/2"	118'-8 1/2"	170'-0 1/2"	127'-0 1/2"	34374.3844	438.435	438.795	438.770	439.322	439.387
8	159'-10 3/8"	118'-7 3/8"	169'-11 1/8"	120'-11 1/8"	34380.5510	438.467	438.827	438.803	439.354	439.419
9	159'-10"	118'-7"	169'-10 1/8"	120'-10 1/8"	34389.5510	438.890	439.249	439.225	439.776	439.841
10	159'-9 1/8"	118'-6 1/8"	169'-9 1/8"	120'-9 1/8"	34398.5510	439.144	439.503	439.478	440.030	440.094
11	159'-8 3/8"	118'-5 3/8"	169'-9"	120'-9"	34407.5510	439.352	439.711	439.685	440.237	440.301
12	159'-7 5/8"	118'-4 5/8"	169'-8"	120'-8"	34416.5510	439.475	439.833	439.809	440.360	440.423
13	159'-6 3/8"	118'-3 3/8"	169'-7 1/8"	120'-7 1/8"	34425.5510	439.381	439.740	439.715	440.266	440.329
14	159'-5 1/2"	118'-2 1/2"	169'-6 1/8"	120'-6 1/8"	34434.5510	439.246	439.604	439.579	440.129	440.192

NOTES:
 N.T.R. INDICATES PLATES THAT SHALL CONFORM TO THE SUPPLEMENTAL REQUIREMENTS FOR NOTCH TOUGHNESS (ZONE 2).
 UNLESS OTHERWISE NOTED DIMENSIONS ARE SHOWN ALONG THE CENTERLINE OF THE MEMBER.
 Ⓧ FOR FABRICATION ONLY.
 FOR COORDINATES OF X-Y OFFSETS SEE SHEET 59.
 ALL STRUCTURAL STEEL SHALL BE AASHTO M183 UNLESS NOTED.
 INTERIOR CROSS FRAMES, END CROSS FRAMES AND DIAPHRAGMS FOR SOUTH BOUND LANES AS SHOWN, NORTH BOUND LANES SIMILAR UNLESS NOTED.

Relocate Cross Frames 2 and 3 along Hinge Line

-S REVISED

REVISIONS	
Name	Date
Ⓧ Cross-Frames	10/25/02

STATE OF ILLINOIS
 DEPARTMENT OF TRANSPORTATION
 F.A.I. ROUTE 270
 SECTION 82-6B-1
 F.A.I. ROUTE 270 OVER PRAIRIE DUPONT
 DIVERSION CHANNEL AND BLUE WATERS DITCH
STEEL FRAMING PLAN SPAN 3 & SPAN 4
 County: St. Clair
 Date: _____
 Drawn By: JY
 Checked By: _____
 ENVIRODYNE ENGINEERS INC.
 Chicago, Illinois

DESIGNED - J. Uehle	EXAMINED	DATE - March 9, 2012
CHECKED - B. Williams	ENGINEER OF STRUCTURAL SERVICES	
DRAWN - J. Uehle	PASSED	
CHECKED - B. Williams	ENGINEER OF BRIDGES AND STRUCTURES	

STATE OF ILLINOIS
 DEPARTMENT OF TRANSPORTATION

FOR INFORMATION - 1984 PLANS - FRAMING SPANS 3-4
 SN 082-0221

F.A.I. RTE.	SECTION	COUNTY	TOTAL SHEETS	SHEET NO.
255	82-6B-1	ST. CLAIR	18	10
CONTRACT NO. 76F44				
ILLINOIS FED. AID PROJECT				