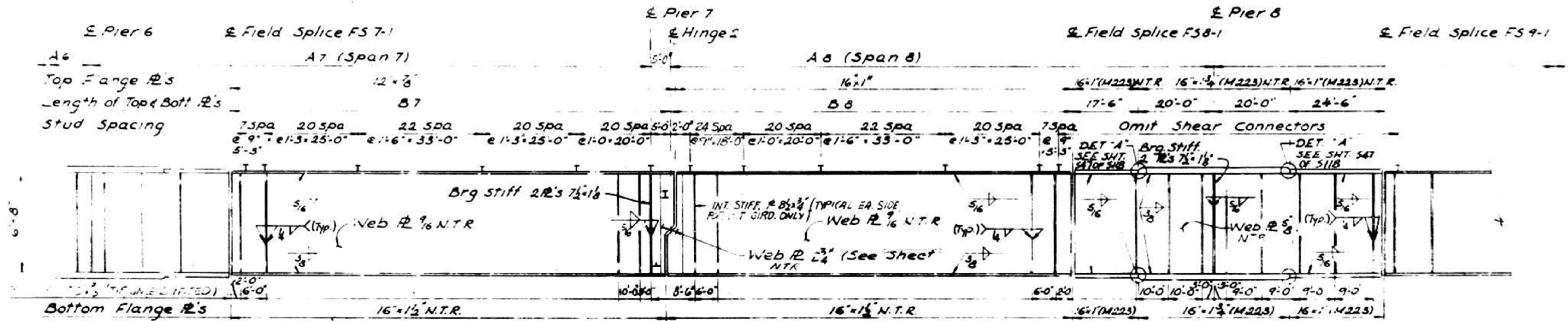


FRAMING PLAN



GIRDER	GIRDER DIMENSIONS				RADIUS	TOP OF WEB ELEVATION					
	A7	B7	A8	B8		FIELD SPICE FS 7-1	PIER 7	HINGE 2	FIELD SPICE FS 8-1	PIER 8	FIELD SPICE FS 9-1
1	150'-4"	117'-10"	145'-5 1/2"	107'-11"	34320.3844	441.415	441.771	441.752	442.265	442.350	442.589
2	150'-3 1/2"	117'-9 1/2"	145'-5 1/2"	107'-11"	34329.3844	441.644	441.999	441.980	442.493	442.558	442.811
3	150'-2 1/2"	117'-8 1/2"	145'-4 1/2"	107'-10 1/2"	34338.3844	441.850	442.185	442.166	442.679	442.744	442.996
4	150'-1 1/2"	117'-7 1/2"	145'-3 1/2"	107'-9 1/2"	34347.3844	441.800	442.155	442.136	442.648	442.713	442.965
5	150'-0 1/2"	117'-6 1/2"	145'-2 1/2"	107'-8 1/2"	34356.3844	441.685	442.059	442.040	442.559	442.597	442.849
6	150'-0 1/2"	117'-6 1/2"	145'-2"	107'-8"	34365.3844	441.524	441.877	441.859	442.371	442.435	442.687
7	149'-11 3/8"	117'-5 3/8"	145'-7 1/4"	107'-7 1/4"	34374.3844	441.194	441.547	441.528	442.041	442.104	442.356
8	149'-10 1/2"	117'-4 1/2"	145'-0 1/2"	107'-6 1/2"	34383.3844	441.225	441.578	441.559	442.071	442.135	442.387
9	149'-10"	117'-4"	144'-11 1/2"	107'-5 1/2"	34389.8870	441.845	441.999	441.980	442.492	442.555	442.807
10	149'-9 3/8"	117'-3 3/8"	144'-11 1/8"	107'-5 1/8"	34398.3844	441.897	442.250	442.231	442.748	442.806	443.058
11	149'-8 1/2"	117'-2 1/2"	144'-10 1/2"	107'-4 1/2"	34407.8810	442.104	442.456	442.437	442.969	443.032	443.284
12	149'-7 1/2"	117'-1 1/2"	144'-9 1/2"	107'-3 1/2"	34414.8810	442.224	442.577	442.558	443.069	443.132	443.384
13	149'-6 1/2"	117'-0 1/2"	144'-8 1/2"	107'-2 1/2"	34421.8810	442.129	442.401	442.382	442.873	442.936	443.189
14	149'-6 1/2"	117'-0 1/2"	144'-8 1/2"	107'-2 1/2"	34428.8810	441.997	442.343	442.324	442.835	442.897	443.150

ELEVATION (GIRDER 1 SHOWN)

NOTES:
 N.T.R. INDICATES PLATES THAT SHALL CONFORM TO THE SUPPLEMENTAL REQUIREMENTS FOR NOTCH TOUGHNESS (ZONE 2).
 UNLESS OTHERWISE NOTED DIMENSIONS ARE SHOWN ALONG THE CENTERLINE OF THE MEMBER.
 (C) FOR FABRICATION ONLY.
 FOR COORDINATES OF X&Y OFFSETS SEE SHEET 59.
 ALL STRUCTURAL STEEL SHALL BE AASHTO M183 UNLESS NOTED.
 INTERIOR CROSS FRAMES, END CROSS FRAMES AND DIAPHRAGMS FOR SOUTH BOUND LANES AS SHOWN, NORTH BOUND LANES SIMILAR UNLESS NOTED.
 Relocate Cross Frames & Bracings Marked Thus

FOR INFORMATION ONLY

AS REVISED

REVISIONS	
Name	Date
Δ Cross Frames	10/26/09

STATE OF ILLINOIS
 DEPARTMENT OF TRANSPORTATION
 F.A.I. ROUTE 270
 SECTION 82-68-1 (C-C)
 DIVERSION CHANNEL AND BLUE WATERS DITCH
STEEL FRAMING PLAN SPAN 7 & SPAN 8
 County: St. Clair
 Date: _____
 Drawn By: YY
 Checked By: _____
 ENVIRODYNE ENGINEERS INC.
 Chicago, Illinois

DESIGNED - J. Uehle	EXAMINED _____	DATE - March 9, 2012
CHECKED - B. Williams	ENGINEER OF STRUCTURAL SERVICES	
DRAWN - J. Uehle	PASSED _____	
CHECKED - B. Williams	ENGINEER OF BRIDGES AND STRUCTURES	

STATE OF ILLINOIS
 DEPARTMENT OF TRANSPORTATION

FOR INFORMATION - 1984 PLANS - FRAMING SPANS 7-8
 SN 082-0221

F.A.I. RTE.	SECTION	COUNTY	TOTAL SHEETS	SHEET NO.
255	82-68-1	ST. CLAIR	18	12
CONTRACT NO. 76F44				
ILLINOIS FED. AID PROJECT				