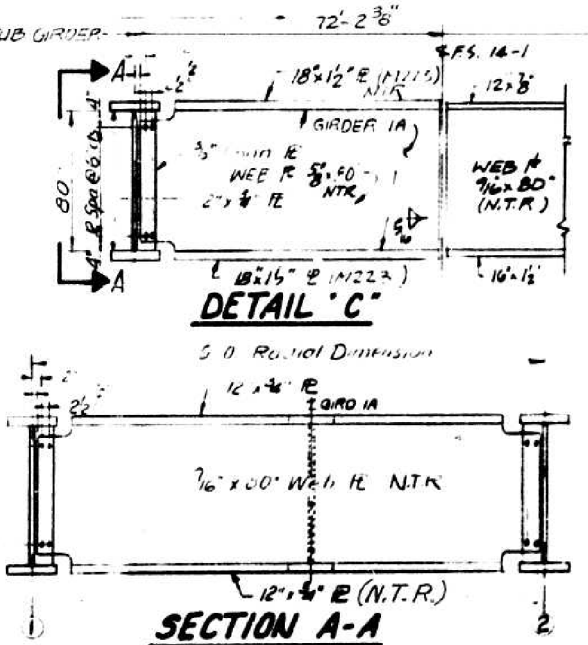
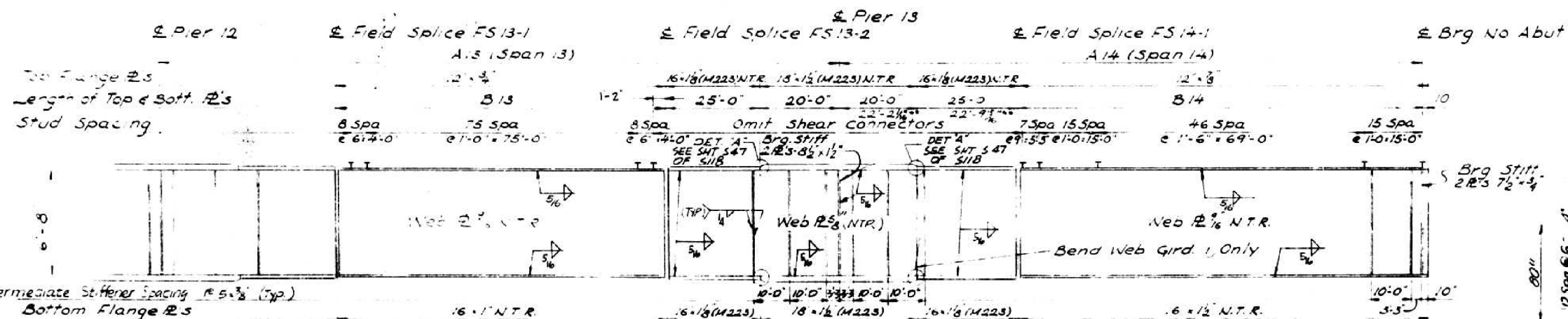


FRAMING PLAN



FOR INFORMATION ONLY

GIRDER	DIMENSIONS				TOP OF WEB ELEVATION ^①					
	A13	B13	A14	B14	RADIUS	FS 13-1	FS 13-2	PIER 13	FS 14-1	NO. AB
1	75'-2 3/8	57'-5 1/2	145'-7 3/8	100'-7 3/8	4320.3344	442.568	442.048	441.528	441.518	440.58
2	75'-3 3/8	58'-3 3/8	150'-2 3/8	105'-2 3/8	34320.3844	442.712	442.192	441.672	441.662	440.604
3	75'-3 3/8	58'-3 3/8	150'-2 3/8	105'-2 3/8	34320.3844	442.712	442.192	441.672	441.662	440.604
4	75'-2 3/8	57'-5 1/2	145'-7 3/8	100'-7 3/8	34320.3844	442.656	442.136	441.616	441.606	440.548
5	75'-1 3/8	55'-7 3/8	140'-0 3/8	100'-0 3/8	34320.3844	442.5	441.98	441.46	441.45	440.39
6	75'-1 3/8	55'-7 3/8	140'-0 3/8	100'-0 3/8	34320.3844	442.160	441.64	441.12	441.11	439.875
7	74'-1 3/8	54'-7 3/8	139'-11 3/8	104'-11 3/8	34374.3844	441.78	441.26	440.74	440.73	439.388
8	74'-1 3/8	54'-7 3/8	139'-11 3/8	104'-11 3/8	34380.3510	441.6	441.08	440.56	440.55	439.312
9	74'-10 3/8	54'-10 3/8	149'-10 3/8	104'-10 3/8	34389.5510	441.977	441.457	440.937	440.927	439.572
10	74'-9 3/8	54'-9 3/8	149'-9 3/8	104'-9 3/8	34395.5510	442.2	441.68	441.16	441.15	439.605
11	74'-9 3/8	54'-9 3/8	149'-9 3/8	104'-9 3/8	34401.5510	442.207	441.687	441.167	441.157	439.709
12	74'-8 3/8	54'-8 3/8	149'-8 3/8	104'-8 3/8	34416.5510	442.201	441.681	441.161	441.151	439.666
13	74'-7 3/8	54'-7 3/8	149'-7 3/8	104'-7 3/8	34428.5510	441.934	441.414	440.894	440.884	439.406
14	74'-6 3/8	54'-6 3/8	149'-7 3/8	104'-7 3/8	34439.5510	441.723	441.203	440.683	440.673	439.101

ELEVATION (GIRDER 8 SHOWN)

NOTES:
 N.T.R. INDICATES PLATES THAT SHALL CONFORM TO THE SUPPLEMENTAL REQUIREMENTS FOR NOTCH TOUGHNESS (ZONE 2), UNLESS OTHERWISE NOTED DIMENSIONS ARE SHOWN ALONG THE CENTERLINE OF THE MEMBER.
 ① FOR FABRICATION ONLY.
 FOR COORDINATES OF X&Y OFFSETS SEE SHEET 59
 ALL STRUCTURAL STEEL SHALL BE AASHTO M183 UNLESS NOTED.
 INTERIOR CROSS FRAMES, END CROSS FRAMES AND DIAPHRAGMS FOR SOUTH BOUND LANES AS SHOWN, NORTH BOUND LANES SIMILAR UNLESS NOTED.
 ** FOR GIRDER 1 AND 1A.
 Δ RELOCATE CROSS-FRAMES AND BRACINGS MARKED THUS Δ

AS REVISED

REVISION	
Name	Date
Δ CROSS-FRAMES 10-28-82	

STATE OF ILLINOIS
 DEPARTMENT OF TRANSPORTATION
 F.A.I. ROUTE 270
 SECTION 82-6B-1
 DIVERSION CHANNEL AND BLUE WATERS DITCH
STEEL FRAMING PLAN SPANS 13 & 14
 County: St. Clair
 Date:
 Checked By:
 ENGINEER: [Signature]
 Chicago, Illinois