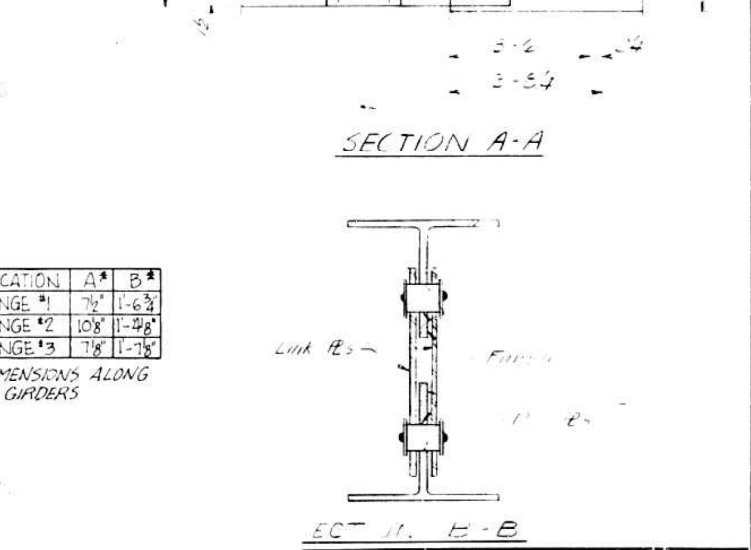
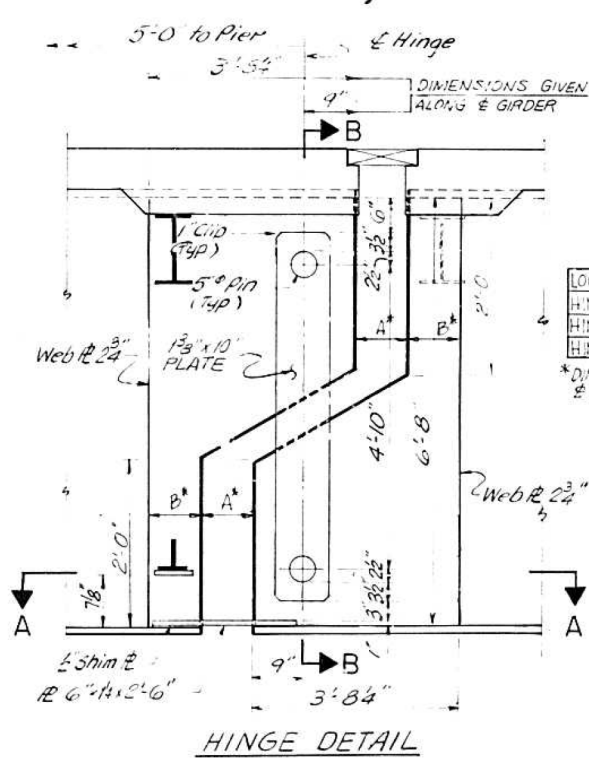


F. 1 1/2\"/>

FIELD SPLICE DETAILS

FOR INFORMATION ONLY

FIELD SPLICE LOCATION	WEB SPLICE		TOP FLANGE SPLICE					BOTTOM FLANGE SPLICE							
	PLATE SIZE	A	B	PLATE SIZE	BAR SIZE	C	D	E	FILL #	PLATE SIZE	BAR SIZE	C	D	E	FILL #
Fs. 1-1	18 x 3/8 x 6 1/2	21	32	12 x 3/8 x 2 1/2	7 x 3/8 x 2 1/2	3	3 1/2	5	2 1/2	16 x 3/8 x 2 1/2	7 x 3/8 x 2 1/2	4	3 1/2	5 1/2	2 1/2
Fs. 2-1	18 x 3/8 x 6 1/2	19	3 1/2	12 x 3/8 x 2 1/2	5 x 3/8 x 2 1/2	3	2	5	2 1/2	16 x 3/8 x 2 1/2	7 x 3/8 x 2 1/2	3	3 1/2	5 1/2	2 1/2
Fs. 2-2	18 x 3/8 x 6 1/2	17	3 1/2	12 x 3/8 x 2 1/2	5 x 3/8 x 2 1/2	2	5	5	2 1/2	16 x 3/8 x 2 1/2	7 x 3/8 x 2 1/2	3	3 1/2	5 1/2	2 1/2
Fs. 3-1	18 x 3/8 x 6 1/2	21	3 1/2	12 x 3/8 x 2 1/2	7 x 3/8 x 2 1/2	3	3 1/2	5	2 1/2	16 x 3/8 x 2 1/2	7 x 3/8 x 2 1/2	4	3 1/2	5 1/2	2 1/2
Fs. 4-1	18 x 3/8 x 6 1/2	21	3 1/2	12 x 3/8 x 2 1/2	7 x 3/8 x 2 1/2	3	3 1/2	5	2 1/2	16 x 3/8 x 2 1/2	7 x 3/8 x 2 1/2	6	4	5 1/2	2 1/2
Fs. 5-1	18 x 3/8 x 6 1/2	21	3 1/2	12 x 3/8 x 2 1/2	5 x 3/8 x 2 1/2	4	2	5	2 1/2	16 x 3/8 x 2 1/2	7 x 3/8 x 2 1/2	5	3 1/2	5 1/2	2 1/2
Fs. 5-2	18 x 3/8 x 6 1/2	19	3 1/2	12 x 3/8 x 2 1/2	5 x 3/8 x 2 1/2	4	2	5	2 1/2	16 x 3/8 x 2 1/2	7 x 3/8 x 2 1/2	1	3 1/2	5 1/2	2 1/2
Fs. 6-1	18 x 3/8 x 6 1/2	19	3 1/2	12 x 3/8 x 2 1/2	5 x 3/8 x 2 1/2	4	2	5	2 1/2	16 x 3/8 x 2 1/2	5 x 3/8 x 2 1/2	2	2	5 1/2	2 1/2
Fs. 6-2	18 x 3/8 x 6 1/2	12	3 1/2	12 x 3/8 x 2 1/2	5 x 3/8 x 2 1/2	2	5	5	2 1/2	16 x 3/8 x 2 1/2	5 x 3/8 x 2 1/2	5	2	5 1/2	2 1/2
Fs. 7-1	18 x 3/8 x 6 1/2	17	3 1/2	12 x 3/8 x 2 1/2	5 x 3/8 x 2 1/2	4	5	5	2 1/2	16 x 3/8 x 2 1/2	7 x 3/8 x 2 1/2	4	3 1/2	5 1/2	2 1/2
Fs. 8-1	18 x 3/8 x 6 1/2	17	3 1/2	16 x 1/2 x 2 1/2	7 x 3/8 x 2 1/2	4	3 1/2	5 1/2	2 1/2	16 x 3/8 x 2 1/2	7 x 3/8 x 2 1/2	4	3 1/2	5 1/2	2 1/2
Fs. 9-1	18 x 3/8 x 6 1/2	17	3 1/2	12 x 3/8 x 2 1/2	5 x 3/8 x 2 1/2	4	5	5	2 1/2	16 x 3/8 x 2 1/2	12 x 1/2 x 3 1/2	2	2	5 1/2	2 1/2
Fs. 9-2	18 x 3/8 x 6 1/2	17	3 1/2	12 x 3/8 x 2 1/2	5 x 3/8 x 2 1/2	3	5	5	2 1/2	16 x 3/8 x 2 1/2	12 x 1/2 x 3 1/2	5	2	5 1/2	2 1/2
Fs. 10-1	18 x 3/8 x 6 1/2	17	3 1/2	12 x 3/8 x 2 1/2	5 x 3/8 x 2 1/2	3	2	5	2 1/2	16 x 3/8 x 2 1/2	10 x 3/4 x 2 1/2	7	3 1/2	5 1/2	2 1/2
Fs. 10-2	18 x 3/8 x 6 1/2	21	3 1/2	12 x 3/8 x 2 1/2	5 x 3/8 x 2 1/2	4	5	5	2 1/2	16 x 3/8 x 2 1/2	10 x 3/4 x 2 1/2	7	3 1/2	5 1/2	2 1/2
Fs. 11-1	18 x 3/8 x 6 1/2	21	3 1/2	12 x 3/8 x 2 1/2	7 x 3/8 x 2 1/2	3	5	5	2 1/2	16 x 3/8 x 2 1/2	18 x 1/2 x 3 1/2	8	4	5 1/2	2 1/2
Fs. 12-1	18 x 3/8 x 6 1/2	21	3 1/2	12 x 3/8 x 2 1/2	5 x 3/8 x 2 1/2	5	5	5	2 1/2	16 x 3/8 x 2 1/2	10 x 3/4 x 2 1/2	4	3 1/2	5 1/2	2 1/2
Fs. 13-1	18 x 3/8 x 6 1/2	19	3 1/2	12 x 3/8 x 2 1/2	5 x 3/8 x 2 1/2	4	5	5	2 1/2	16 x 3/8 x 2 1/2	10 x 3/4 x 2 1/2	3	3 1/2	5 1/2	2 1/2
Fs. 13-2	18 x 3/8 x 6 1/2	13	3 1/2	12 x 3/8 x 2 1/2	5 x 3/8 x 2 1/2	4	5	5	2 1/2	16 x 3/8 x 2 1/2	10 x 3/4 x 2 1/2	7	3 1/2	5 1/2	2 1/2
Fs. 14-1	18 x 3/8 x 6 1/2	21	3 1/2	12 x 3/8 x 2 1/2	5 x 3/8 x 2 1/2	5	5	5	2 1/2	16 x 3/8 x 2 1/2	10 x 3/8 x 2 1/2	7	3 1/2	5 1/2	2 1/2
GIARD 1-A	18 x 3/8 x 6 1/2	21	3 1/2	12 x 3/8 x 2 1/2	5 x 3/8 x 2 1/2	5	2	5	2 1/2	16 x 3/8 x 2 1/2	7 x 3/8 x 2 1/2	4	3 1/2	5 1/2	2 1/2



REVISIONS	
Name	Date

STATE OF ILLINOIS
 DEPARTMENT OF TRANSPORTATION
 FA 1 ROUTE 270
 SECTION 82-6B-1
 FA 1 ROUTE 270 OVER PRAIRIE DUPONT
 DIVERSION CHANNEL AND BLUE WATER DITCH
STEEL DETAILS - FIELD SPLICE & HINGE
 County: St. Clair
 Date: _____
 Drawn: E. J. Uehle
 Checked: B. Williams
 ENVIRODYNE ENGINEERS INC.
 Chicago, Illinois

DESIGNED - J. Uehle	EXAMINED	DATE - March 9, 2012
CHECKED - B. Williams	ENGINEER OF STRUCTURAL SERVICES	
DRAWN - J. Uehle	PASSED	
CHECKED - B. Williams	ENGINEER OF BRIDGES AND STRUCTURES	

STATE OF ILLINOIS
 DEPARTMENT OF TRANSPORTATION

FOR INFORMATION - 1984 PLANS - PIN AND LINK
 SN 082-0221

F.A.I. RTE.	SECTION	COUNTY	TOTAL SHEETS	SHEET NO.
255	82-6B-1	ST. CLAIR	18	16

CONTRACT NO. 76F44
 SHEET NO. 14 OF 16 SHEETS
 ILLINOIS FED. AID PROJECT