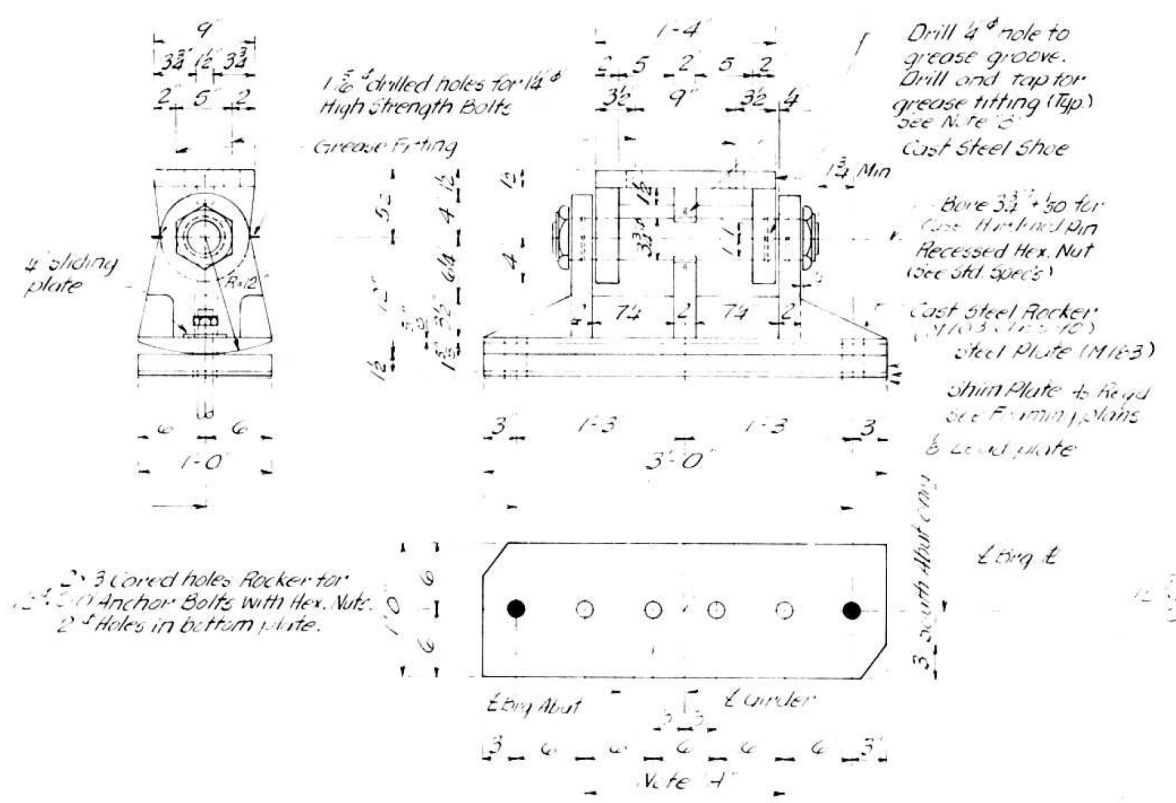
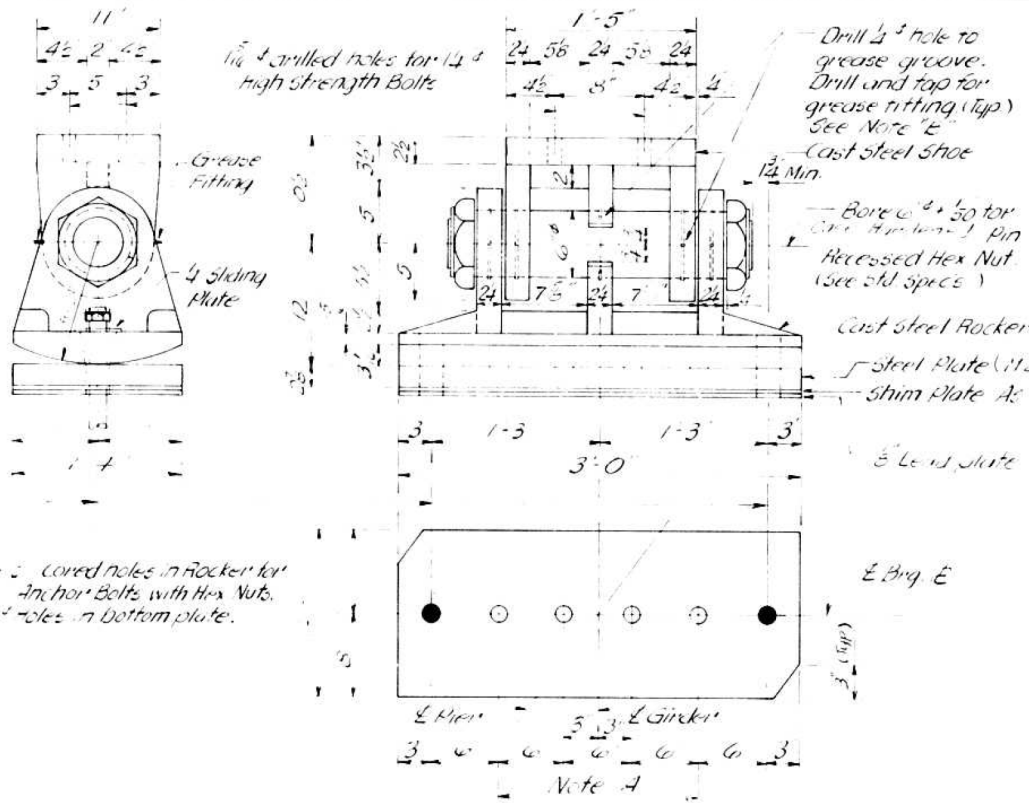


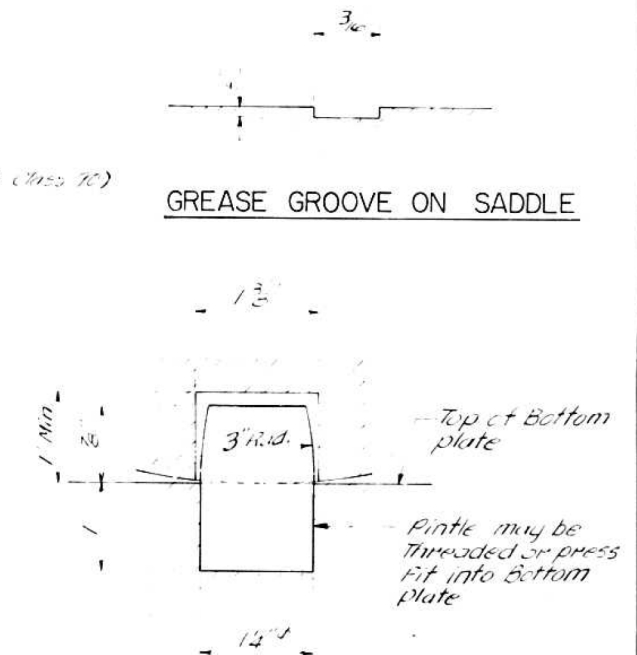
Sht. 555 of 518



EXPANSION BEARINGS - NORTH & SOUTH ABUTMENTS

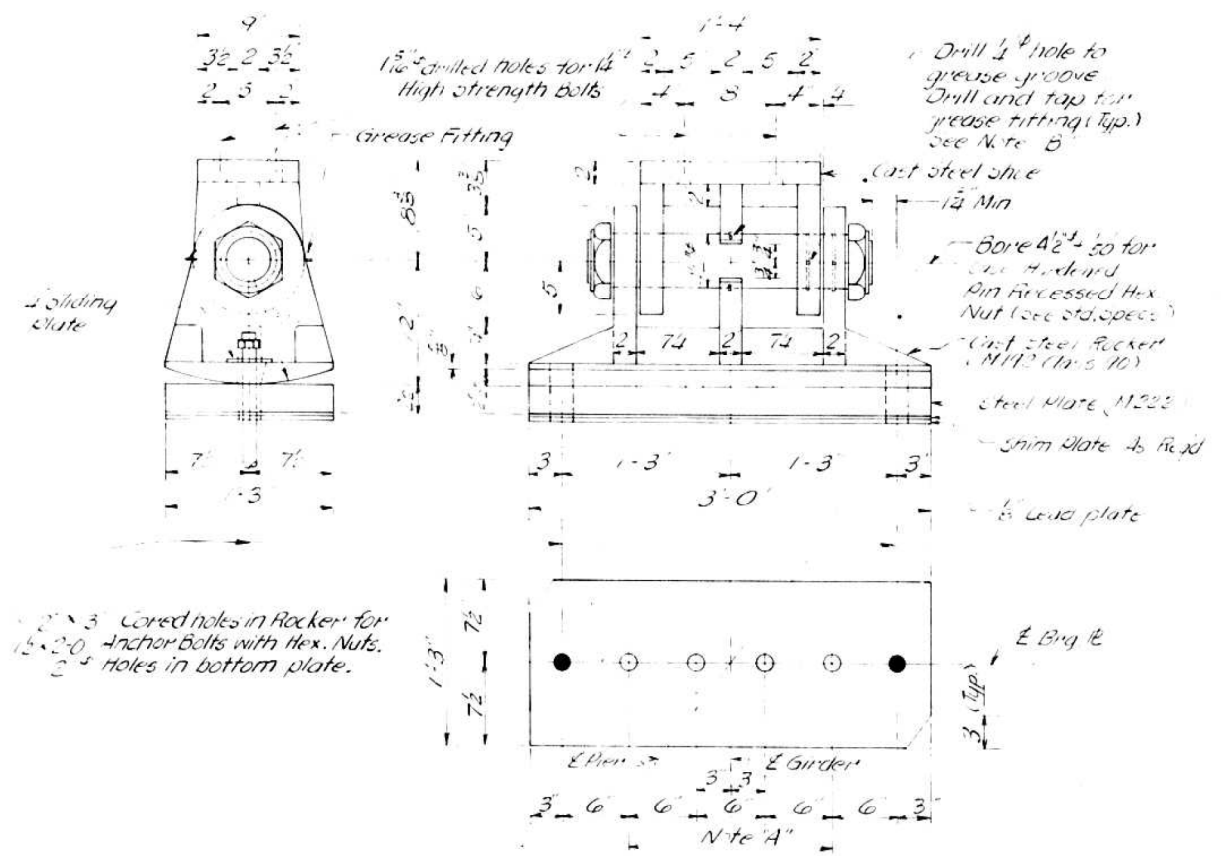


EXPANSION BEARINGS - PIERS 1, 4, 6, 8, 10, & 13

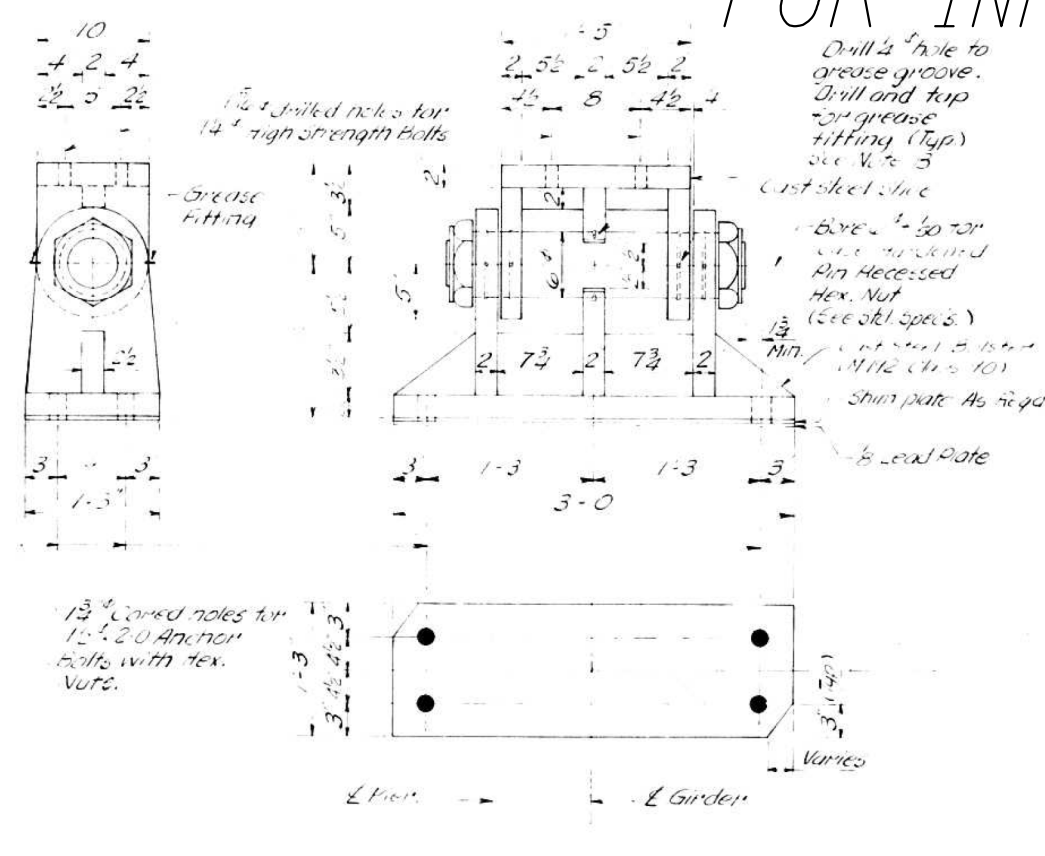


PINTLE DETAIL

FOR INFORMATION ONLY



EXPANSION BEARINGS - PIERS 3, 7, & 11



FIXED BEARINGS - PIERS 2, 5, 9 & 12

Notes:  
Structural Steel Weldments of equal Sections and strength (M113 @ the Abutts and M222 @ M223 grade 50 @ the Piers) may be substituted for the castings. Fillet or partial penetration weld shall be used for weldments. Minimum weld size shall be 4" thickness of plate being welded, except Maximum size of weld need not exceed 3".  
Note A: 1"  $\frac{1}{2}$ " Holes - 1" Deep in top plate for pintles. Thread or press fit pintles into bottom plate.  
Note B: grease bearing assembly with molybdenum grease before installation.

NOTES:  
CAST IRON  
STEEL

REVISIONS	
Name	Date

STATE OF ILLINOIS  
DEPARTMENT OF TRANSPORTATION  
FAI ROUTE 270  
SECTION 82-6B-1  
FAI ROUTE 270 OVER PRAIRIE DUPONT  
DIVERSION CHANNEL AND BLUE WATERS DITCH  
STEEL DETAILS - BEARING  
County: St. Clair  
Date: 1-29-79  
Drawn By: J.U.  
Checked By:  
ENVIRODYNE ENGINEERS INC.  
Chicago, Illinois

DESIGNED - J. Uehle	EXAMINED	DATE - March 9, 2012
CHECKED - B. Williams	ENGINEER OF STRUCTURAL SERVICES	
DRAWN - J. Uehle	PASSED	
CHECKED - B. Williams	ENGINEER OF BRIDGES AND STRUCTURES	

STATE OF ILLINOIS  
DEPARTMENT OF TRANSPORTATION

FOR INFORMATION - 1984 PLANS - BEARINGS  
SN 082-0221

SHEET NO. 15 OF 16 SHEETS

F.A.I. RTE.	SECTION	COUNTY	TOTAL SHEETS	SHEET NO.
255	82-6B-1	ST. CLAIR	18	17
CONTRACT NO. 76F44			ILLINOIS FED. AID PROJECT	