

STATE OF ILLINOIS
 DEPARTMENT OF TRANSPORTATION
 DIVISION OF HIGHWAYS
**PROPOSED
 HIGHWAY PLANS**

FAI ROUTE 70 (I-70)
 SECTION 60-13RA-1
 SILVER LAKE REST AREAS
 SIDEWALK AND CURB IMPROVEMENTS
 MADISON COUNTY

C-98-039-12

F.A.I. RTE.	SECTION	COUNTY	TOTAL SHEETS	SHEET NO.
70	60-13RA-1	MADISON	6	1
ILLINOIS			CONTRACT NO. 76F46	

D-98-035-12

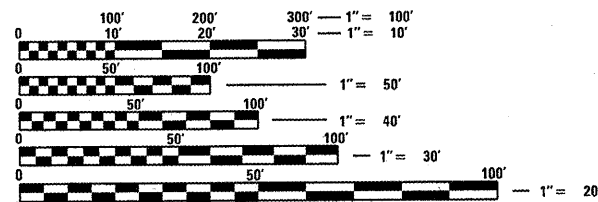


INDEX OF SHEETS

- 1 COVER SHEET
- 2 SOO, NOTES AND COMMITMENTS
- 3-4 PLAN SHEETS
- 5-6 REMOVAL SHEETS

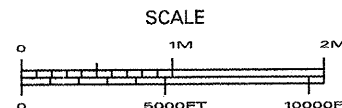
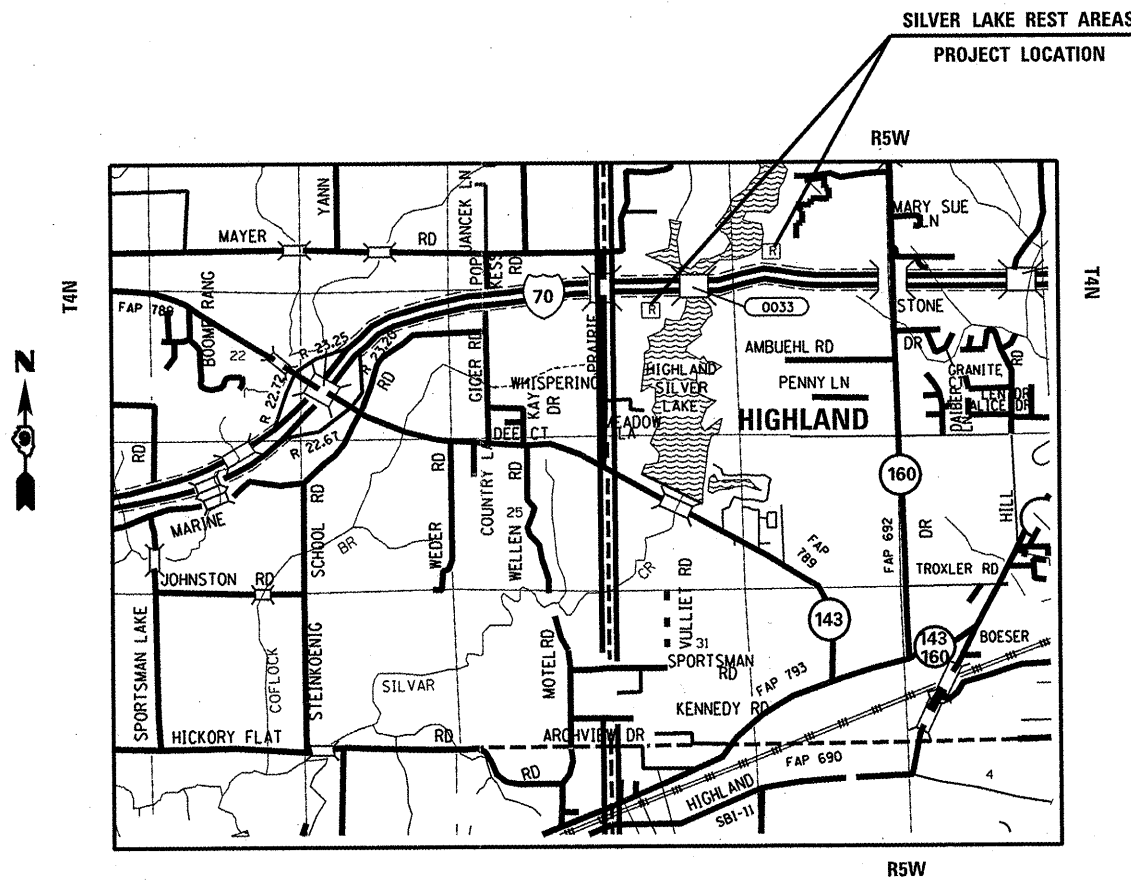
HIGHWAY STANDARDS

- 000001-06
- 001006
- 424001-06
- 424006
- 606001-04
- 701801-05



FULL SIZE PLANS HAVE BEEN PREPARED USING STANDARD ENGINEERING SCALES. REDUCED SIZED PLANS WILL NOT CONFORM TO STANDARD SCALES. IN MAKING MEASUREMENTS ON REDUCED PLANS, THE ABOVE SCALES MAY BE USED.

J.U.L.I.E.
 JOINT UTILITY LOCATION INFORMATION FOR EXCAVATION
 1-800-892-0123
 OR 811



PROJECT ENGINEER: TIM PADGETT (618)346-3325
 PROJECT MANAGER: LIZ BURNSIDE (618)346-3196

CONTRACT NO. 76F46

STATE OF ILLINOIS
 DEPARTMENT OF TRANSPORTATION
 DIVISION OF HIGHWAYS

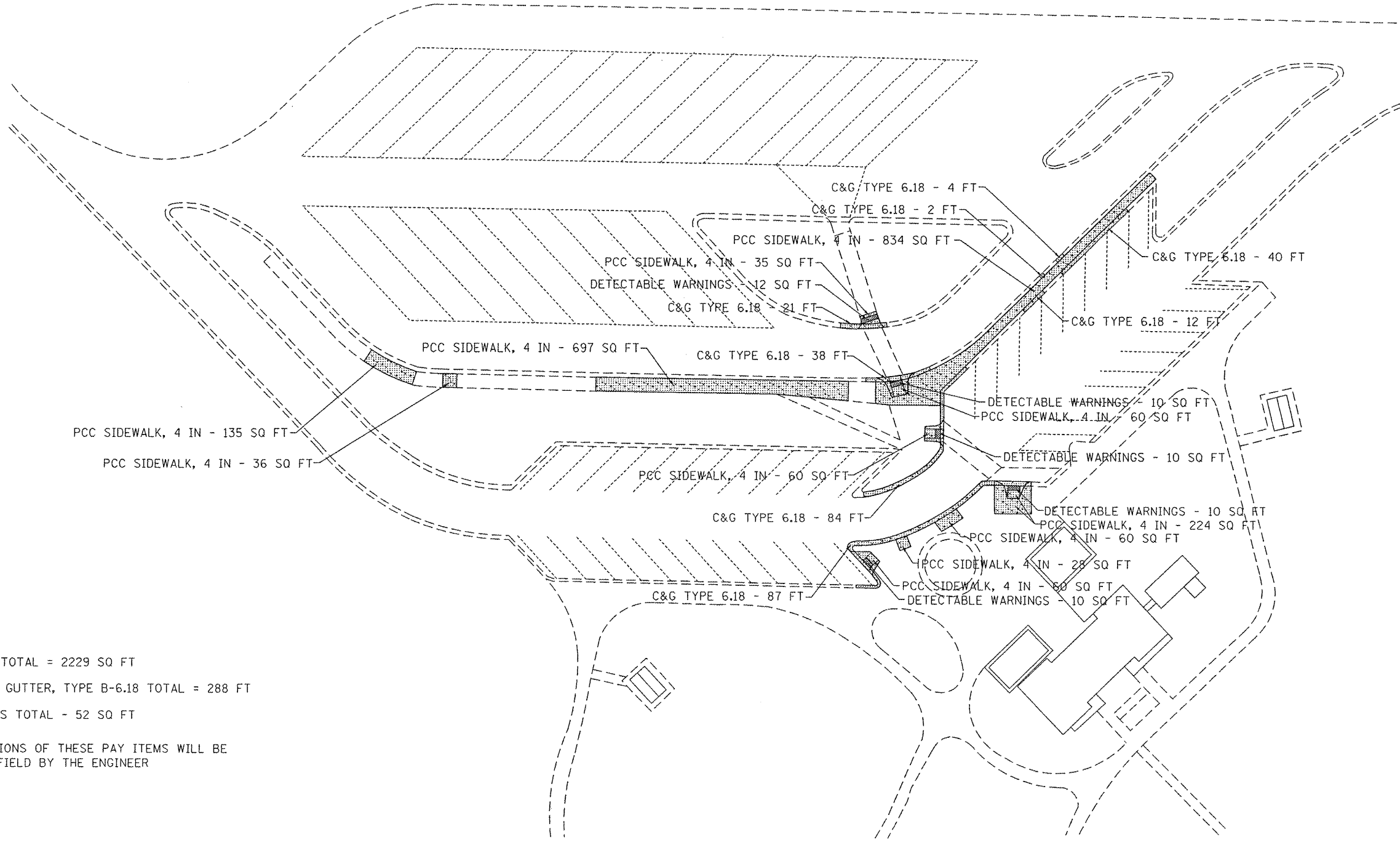
SUBMITTED December 23, 2011

John D. Padgett
 DEPUTY DIRECTOR OF HIGHWAYS, REGION ENGINEER

Feb 3, 2012
John D. Baranowski
 acting ENGINEER OF DESIGN AND ENVIRONMENT

Feb 3, 2012
William R. Feenstra
 acting DIRECTOR OF HIGHWAYS, CHIEF ENGINEER

**PRINTED BY THE AUTHORITY
 OF THE STATE OF ILLINOIS**



PCC SIDEWALK, 4 IN TOTAL = 2229 SQ FT
 COMBINATION CURB & GUTTER, TYPE B-6.18 TOTAL = 288 FT
 DETECTABLE WARNINGS TOTAL = 52 SQ FT

NOTE: EXACT LOCATIONS OF THESE PAY ITEMS WILL BE DETERMINED IN THE FIELD BY THE ENGINEER

NOT TO SCALE

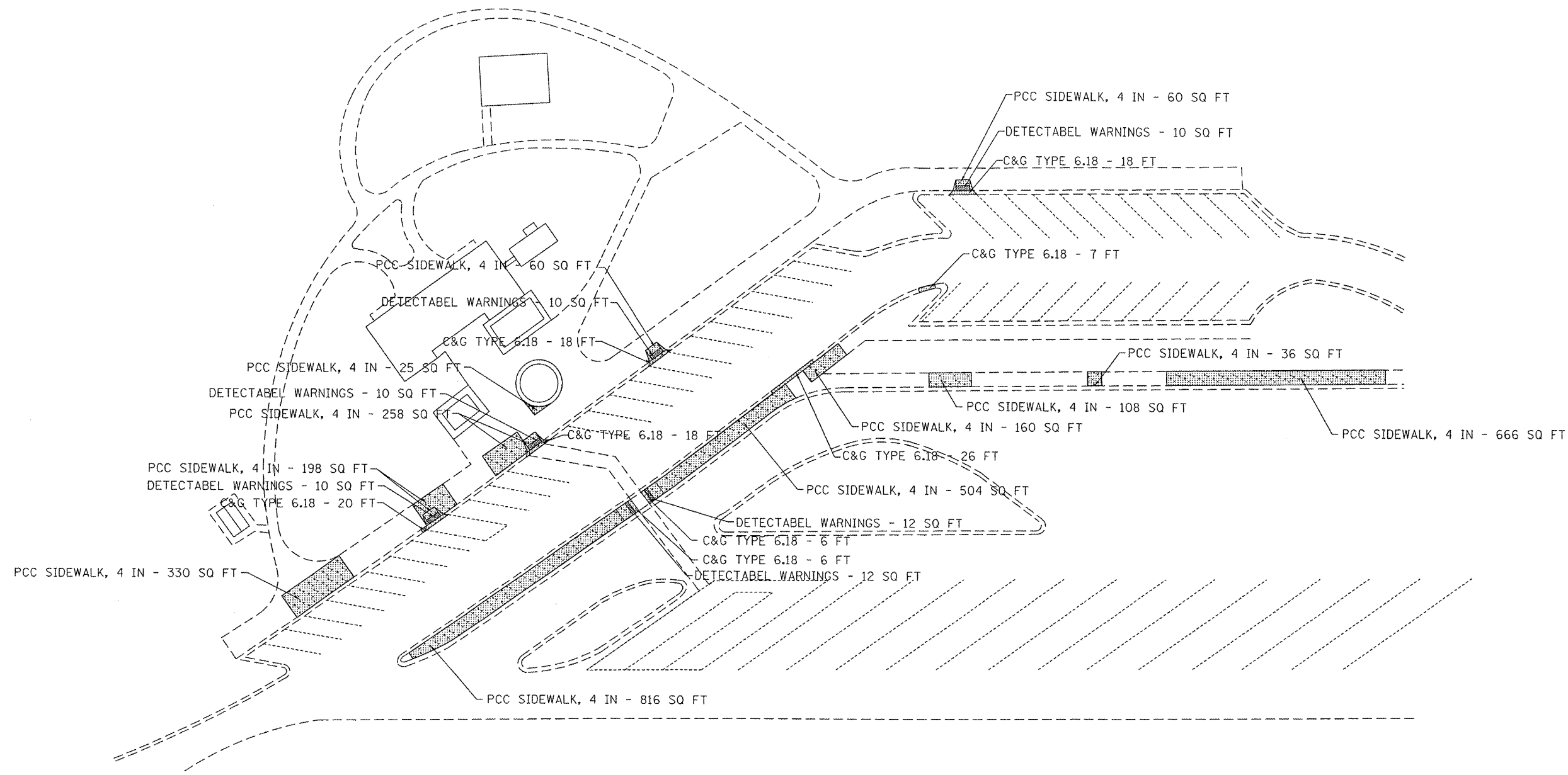
FILE NAME =	USER NAME = burnsideem	DESIGNED -	REVISED -
et\pwwork\pwwork\burnsideem\02287054\0276F46-shr-plan.dgn		DRAWN -	REVISED -
		CHECKED -	REVISED -
		DATE -	REVISED -

**STATE OF ILLINOIS
 DEPARTMENT OF TRANSPORTATION**

PLAN SHEET - SILVER LAKES REST AREA EASTBOUND

F.A.I. RTE.	SECTION	COUNTY	TOTAL SHEETS	SHEET NO.
70	60-13RA-1	MADISON	6	3
FED. ROAD DIST. NO.			ILLINOIS FED. AID PROJECT	
			CONTRACT NO. 76F46	

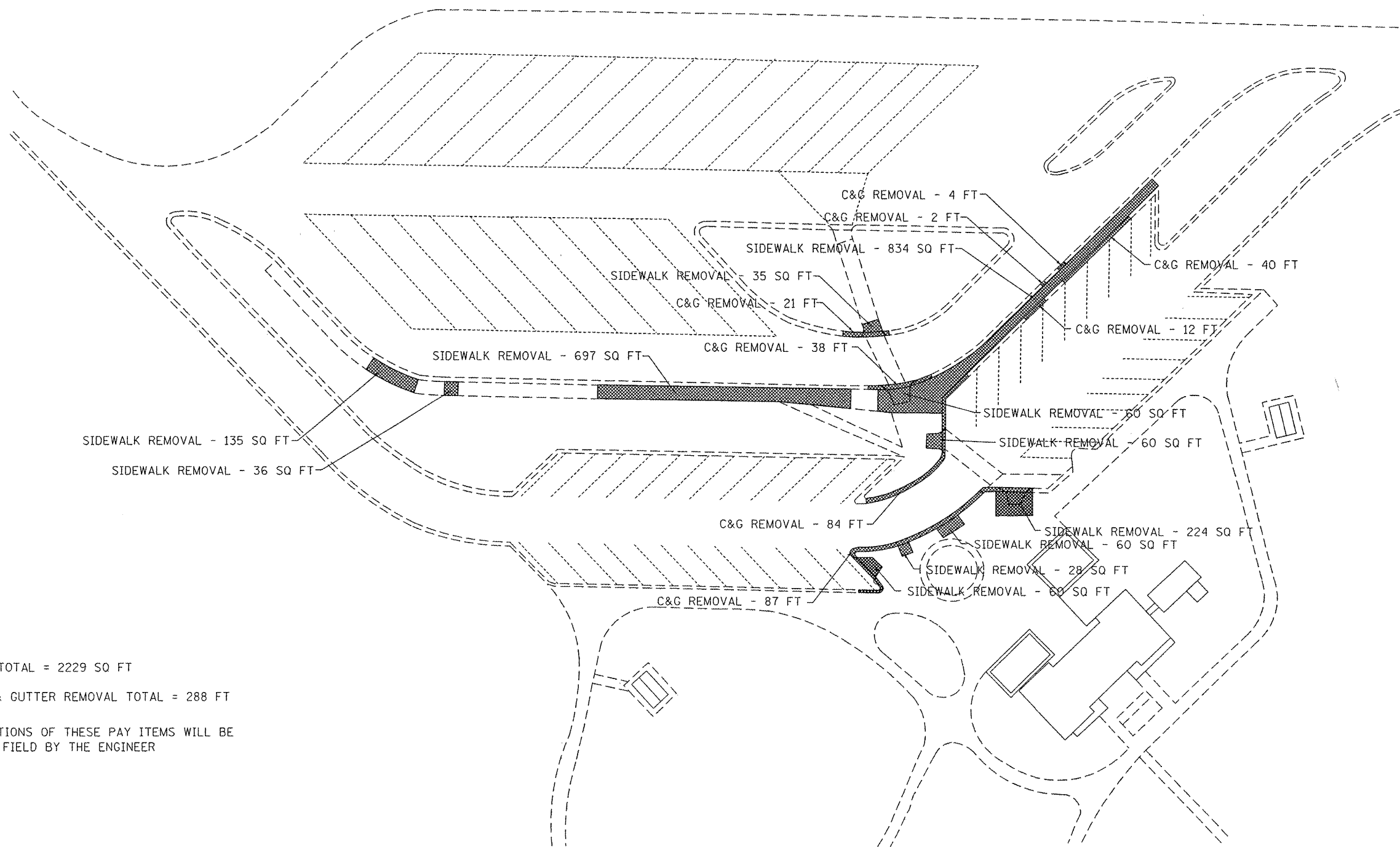
SCALE: SHEET NO. OF SHEETS STA. TO STA.



PCC SIDEWALK, 4 IN TOTAL = 3221 SQ FT
 COMBINATION CURB & GUTTER, TYPE 6.18 TOTAL = 119 FT
 DETECTABLE WARNINGS TOTAL = 64 SQ FT
 NOTE: EXACT LOCATIONS OF THESE PAY ITEMS WILL BE DETERMINED IN THE FIELD BY THE ENGINEER

NOT TO SCALE

FILE NAME =	USER NAME = burnsideem	DESIGNED -	REVISED -	STATE OF ILLINOIS DEPARTMENT OF TRANSPORTATION	PLAN SHEET - SILVER LAKES REST AREA WESTBOUND			F.A.I. RTE.	SECTION	COUNTY	TOTAL SHEETS	SHEET NO.
c:\pwwork\pwwork\burnsideem\10287054\876f46-ah-1-plan.dgn	DRAWN -	REVISED -	70					60-13RA-1	MADISON	6	4	
PLOT SCALE = 100.0000' / 1" =	CHECKED -	REVISED -	CONTRACT NO. 76F46									
PLOT DATE = 12/23/2011	DATE -	REVISED -	SCALE:		SHEET NO.	OF SHEETS	STA.	TO STA.	FED. ROAD DIST. NO.	ILLINOIS FED. AID PROJECT		



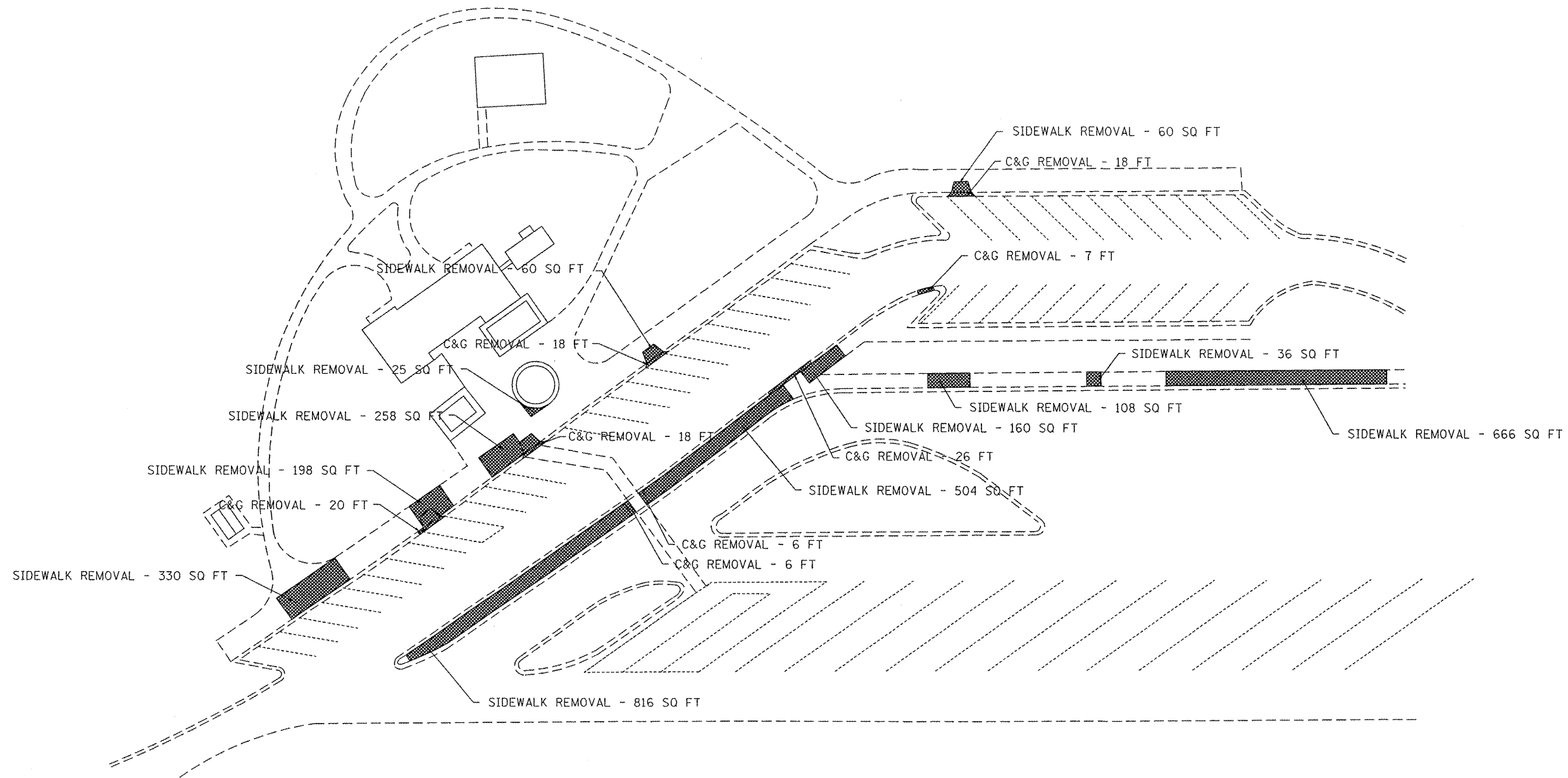
SIDEWALK REMOVAL TOTAL = 2229 SQ FT
 COMBINATION CURB & GUTTER REMOVAL TOTAL = 288 FT
 NOTE: EXACT LOCATIONS OF THESE PAY ITEMS WILL BE DETERMINED IN THE FIELD BY THE ENGINEER

FILE NAME =	USER NAME = burnsideem	DESIGNED -	REVISED -
ei\p\work\p\widot\burnsideem\d0287054\d0276f46-shr-plan.dgn		DRAWN -	REVISED -
		CHECKED -	REVISED -
		DATE -	REVISED -

STATE OF ILLINOIS
DEPARTMENT OF TRANSPORTATION

REMOVAL SHEET - SILVER LAKES REST AREA EASTBOUND			
SCALE:	SHEET NO. OF SHEETS	STA.	TO STA.

F.A.I. RTE.	SECTION	COUNTY	TOTAL SHEETS	SHEET NO.
70	60-13RA-1	MADISON	6	5
FED. ROAD DIST. NO. ILLINOIS FED. AID PROJECT			CONTRACT NO. 76F46	



SIDEWALK REMOVAL TOTAL = 3221 SQ FT

COMBINATION CURB & GUTTER REMOVAL TOTAL = 119 FT

NOTE: EXACT LOCATIONS OF THESE PAY ITEMS WILL BE DETERMINED IN THE FIELD BY THE ENGINEER

FILE NAME =	USER NAME = burnsideem	DESIGNED -	REVISED -
ca:\pwwork\pwwork\burnsideem\d8287054\876f46-aht-plan.dgn		DRAWN -	REVISED -
		CHECKED -	REVISED -
		DATE -	REVISED -

**STATE OF ILLINOIS
DEPARTMENT OF TRANSPORTATION**

REMOVAL SHEET - SILVER LAKES REST AREA WESTBOUND

F.A.I. RTE.	SECTION	COUNTY	TOTAL SHEETS	SHEET NO.
70	60-13RA-1	MADISON	6	6
FED. ROAD DIST. NO.			ILLINOIS FED. AID PROJECT	
			CONTRACT NO. 76F46	

SCALE: SHEET NO. OF SHEETS STA. TO STA.