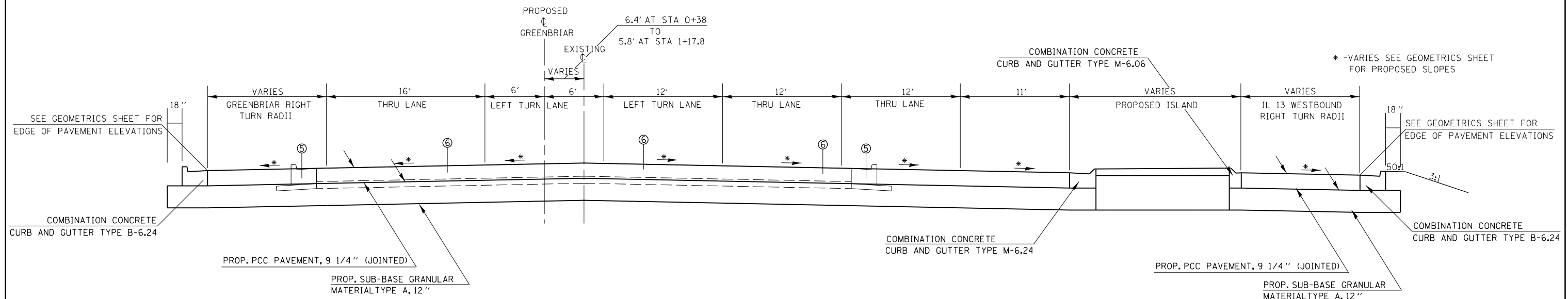
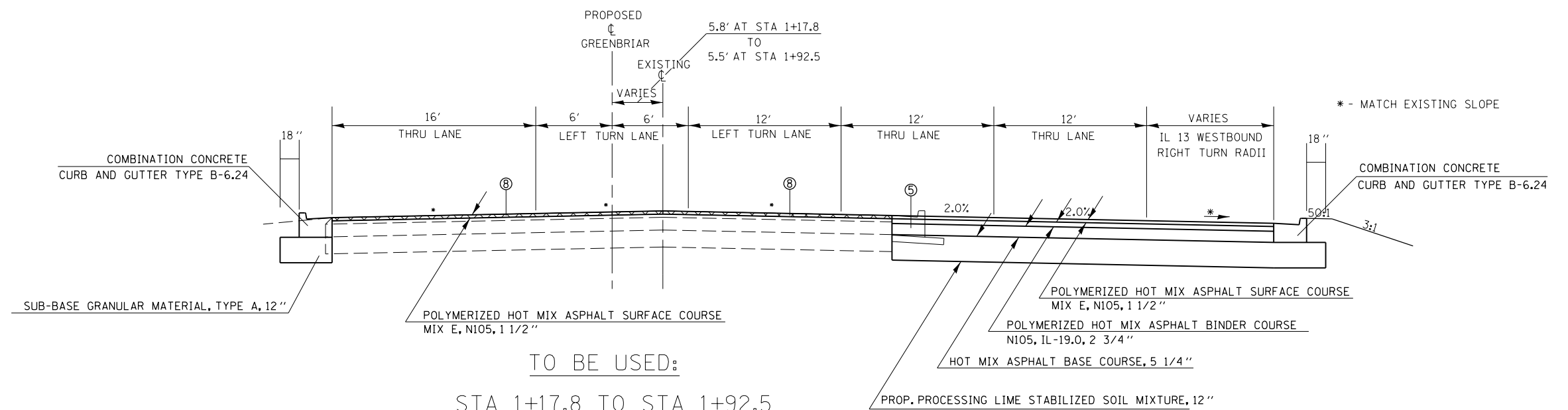


TYPICAL SECTIONS



TO BE USED:
STA 0+38 TO STA 1+17.8

- ① EXIST. PCC PAVMENT
- ② EXIST. HOT-MIX PAVEMENT
- ③ EXIST. HOT-MIX ASPHALT SHOULDERS
- ④ PAVED SHOULDER REMOVAL
- ⑤ COMBINATION CURB AND GUTTER REMOVAL
- ⑥ PAVEMENT REMOVAL
- ⑦ MEDIAN REMOVAL
- ⑧ HOT-MIX ASPHALT SURFACE REMOVAL, 1-1/2"



TO BE USED:
STA 1+17.8 TO STA 1+92.5

FILE NAME =	USER NAME = kellekd	DESIGNED -	REVISED -	STATE OF ILLINOIS DEPARTMENT OF TRANSPORTATION	TYPICAL SECTIONS - GREENBRIAR ROAD			F.A.P. RTE.	SECTION	COUNTY	TOTAL SHEETS	SHEET NO.
et:\pw\work\p\dot\kellekd\0205725\78216-sht-misc.dgn		DRAWN -	REVISED -					331	(1-4)R-1,N-3,TS-3	Williamson	220	25
PLOT SCALE = 10.0000' / in.		CHECKED -	REVISED -		SCALE:			CONTRACT NO. 78216				
PLOT DATE = 12/15/2011		DATE -	REVISED -		SHEET	OF	SHEETS	STA.	TO	STA.	ILLINOIS FED. AID PROJECT	