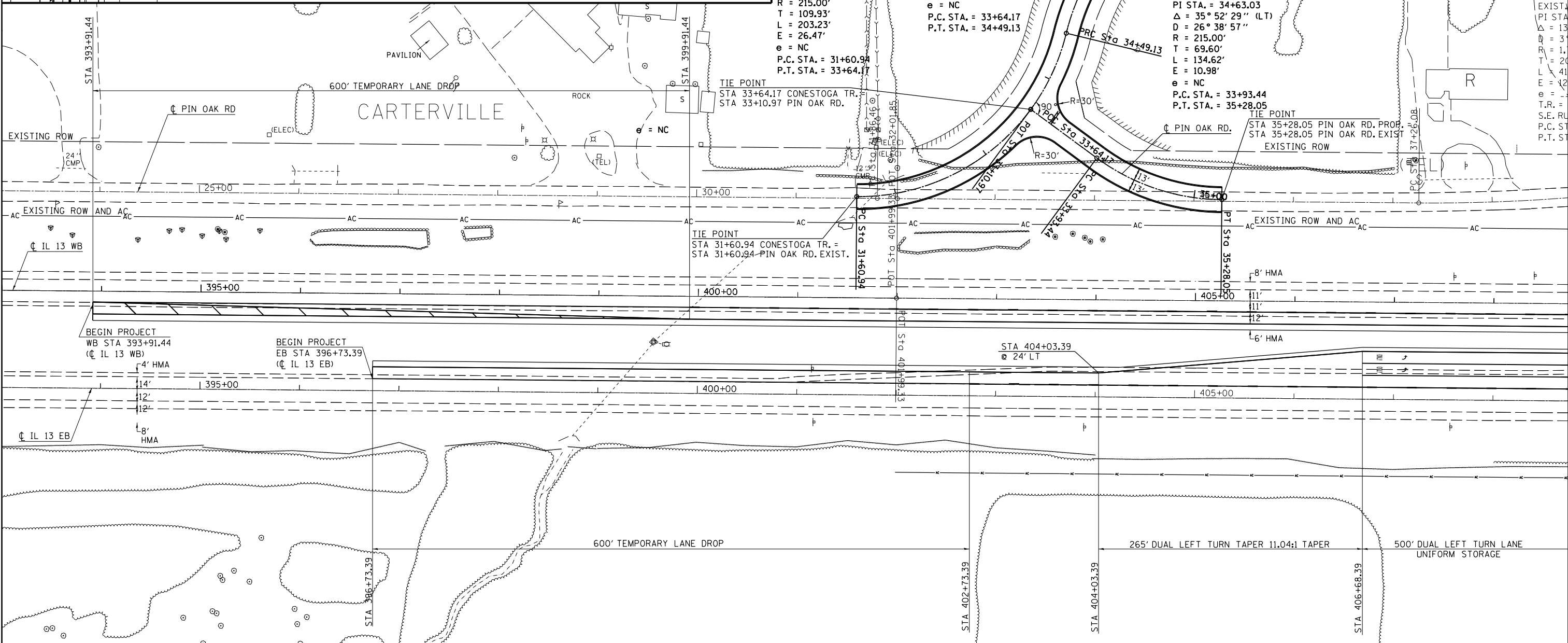
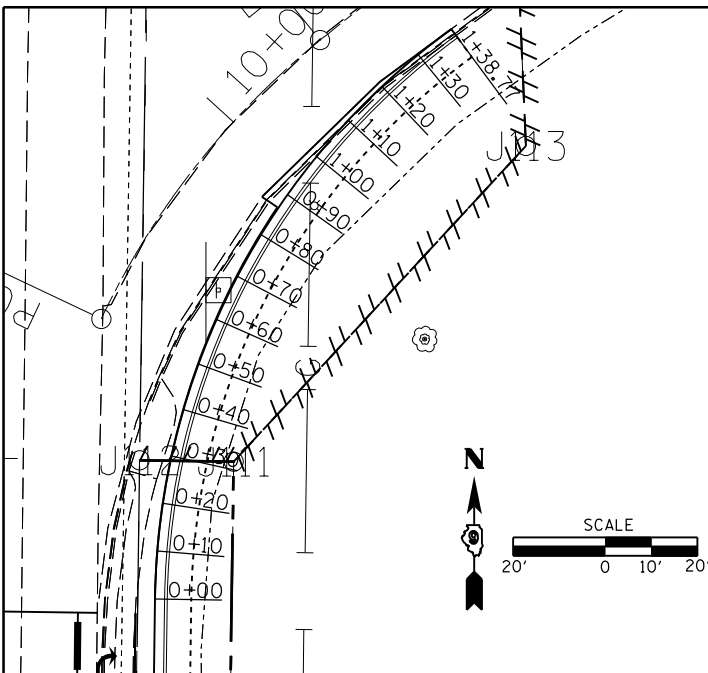


JOHN A. LOGAN RADIUS/ENTRANCE TIE IN

STATIONING ALONG JAL-RAD RADIUS	PROPOSED EDGE OF PAV'T. ELEV. FEET	OFFSET TO E.P. OF EXISTING JALC ENTRANCE FEET	EXISTING EDGE OF PAV'T. ELEV. FEET	DISTANCE ALONG RADIUS FEET
0+00	434.24	11.65	434.47	10
0+10	434.29	10.86	434.50	10
0+20	434.31	9.85	434.51	10
0+30	434.33	9.03	434.51	10
0+40	434.36	8.20	434.52	10
0+50	434.40	7.37	434.55	10
0+60	434.43	6.22	434.56	10
0+70	434.45	4.85	434.55	10
0+80	434.45	4.19	434.54	10
0+90	434.45	3.46	434.52	10
1+00	434.44	1.95	434.48	10
1+10	434.42	1.14	434.44	10
1+20	434.39	1.01	434.41	10
1+30	434.36	0.20	434.36	10
1+38.77	434.33	56.2	434.33	8.77

NOTE: THIS SECTION 20 SCALE FOR CLARITY



FILE NAME =	USER NAME = kellejkd	DESIGNED -	REVISED -
ei:\pwork\pwork\kellejkd\0205725\78216-sht-plnprf.dgn		DRAWN -	REVISED -
		CHECKED -	REVISED -
		DATE -	REVISED -

**STATE OF ILLINOIS
DEPARTMENT OF TRANSPORTATION**

GEOMETRICS SHEET

SCALE: SHEET NO. OF SHEETS STA. TO STA.

F.A.P. RTE.	SECTION	COUNTY	TOTAL SHEETS	SHEET NO.
331	(1-4)R-1,N-3,TS-3	Williamson	220	82
CONTRACT NO. 78216			ILLINOIS FED. AID PROJECT	