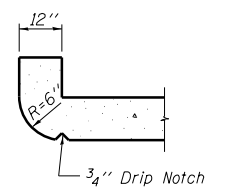
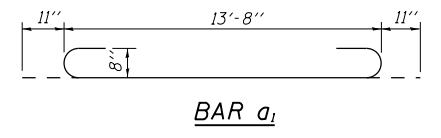
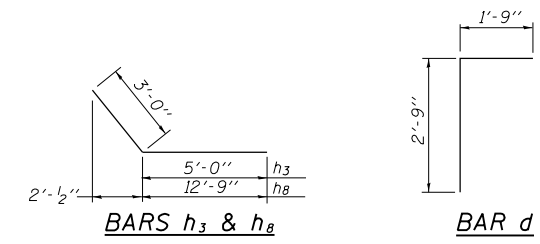
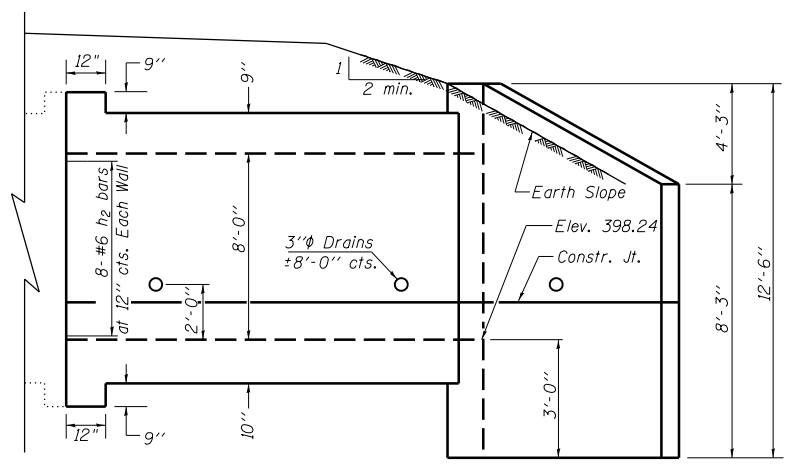
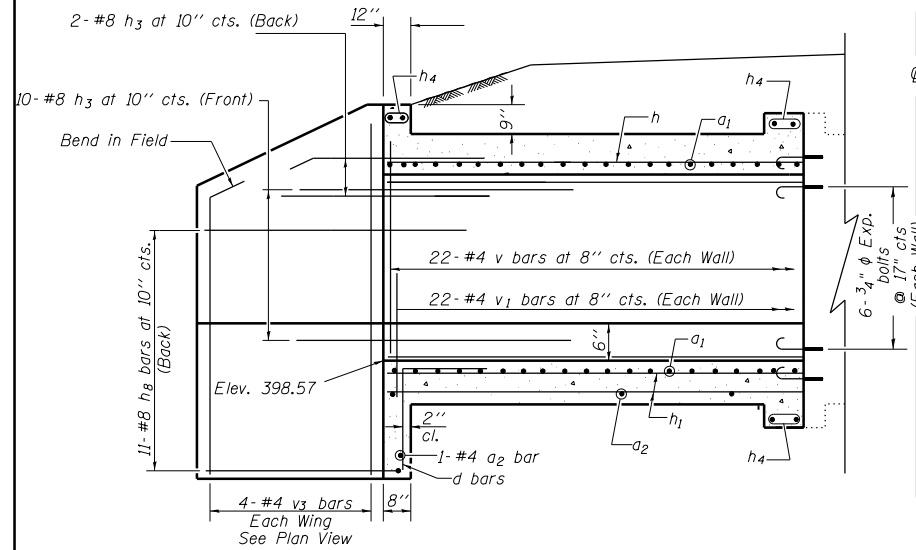
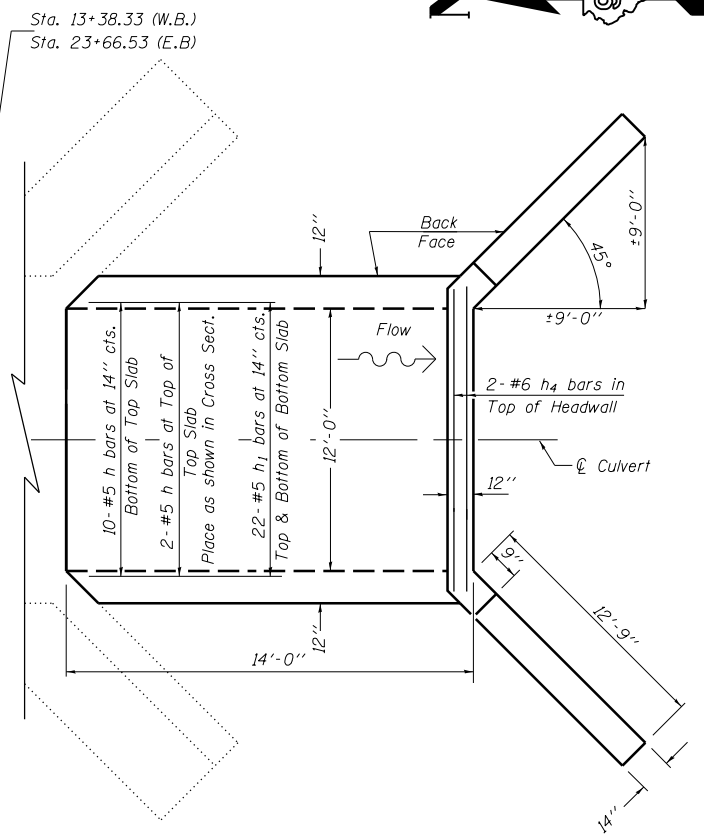
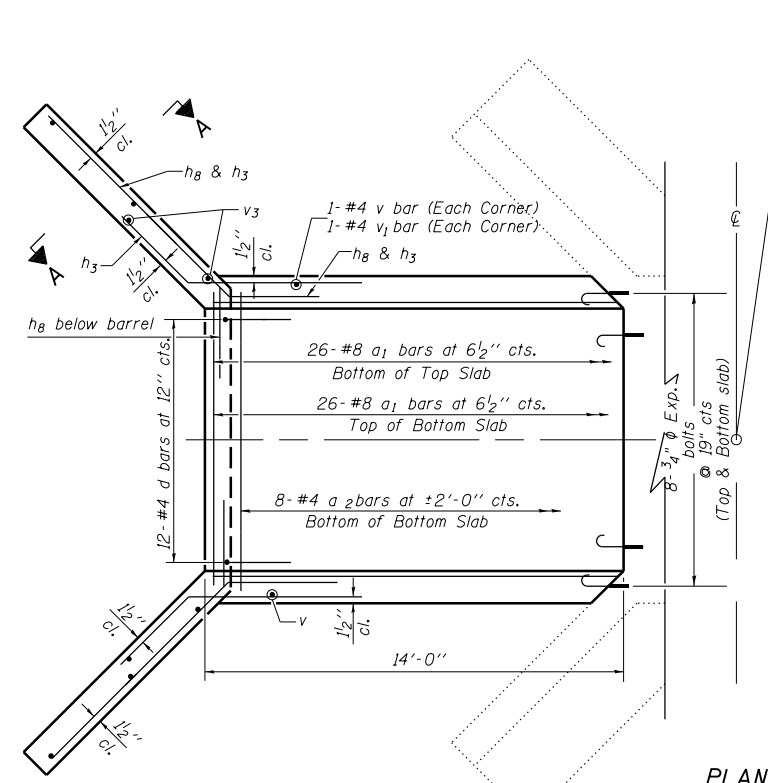


STATE OF ILLINOIS
DEPARTMENT OF TRANSPORTATION



ELEVATION

Dimensions at Rt. L's to C Roadway



PLAN

NOTES

Reinforcement Bars shall conform to the requirements of AASHTO M-31, M-42 or M-53, Grade 60.
Bars indicated thus 12 x 4-#5 etc. indicates 12 lines of bars with 4 lengths per line.
A distance of half the length of the wingwall but not less than six feet of the barrel shall be poured monolithically with the wingwalls.

All construction joints shall be bonded.
Expansion bolts shall be 3/4 inch diameter x 12 inch hooked bolts. Hooked bolts shall extend a minimum of 9 inch into new concrete and have a minimum certified proof load of 4,080 lbs.
All reinforcement bars will be epoxy coated.

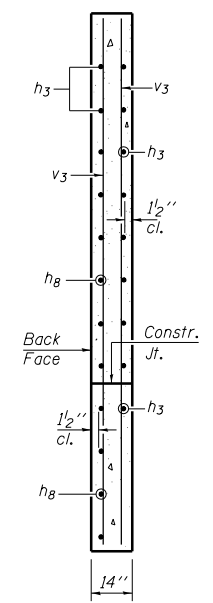
DESIGN STRESSES

fy = 60,000 psi
f'c = 3,500 psi

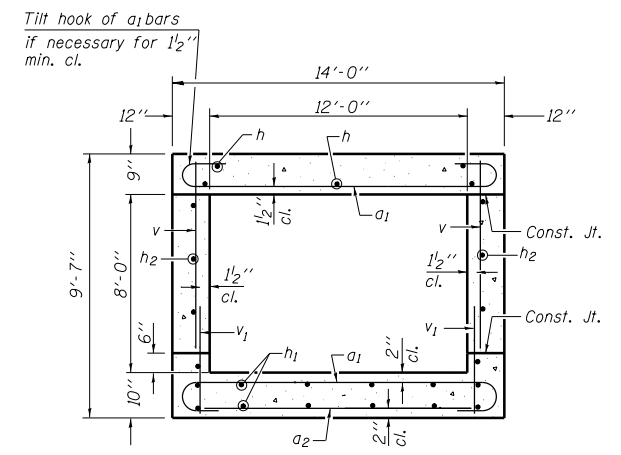
LOADING HS 20-44 & ALT.

BILL OF MATERIAL
(both extensions)

| Bar | No. | Size | Length | Shape |
|----------------------------------|---------|--------|--------|-------|
| a1 | 104 | #8 | 15'-6" | U |
| a2 | 18 | #4 | 13'-8" | — |
| d | 24 | #4 | 4'-6" | L |
| h | 24 | #5 | 13'-8" | — |
| h1 | 44 | #5 | 13'-8" | — |
| h2 | 32 | #6 | 13'-8" | — |
| h3 | 48 | #8 | 8'-0" | — |
| h4 | 12 | #6 | 13'-8" | — |
| h8 | 44 | #8 | 15'-9" | — |
| v | 92 | #4 | 8'-1" | — |
| v1 | 92 | #4 | 2'-4" | — |
| v3 | 16 | #4 | 12'-2" | — |
| Concrete Box Culverts | Cu. Yd. | 64.8 | | |
| Reinforcement Bars, Epoxy Coated | Pound | 10,060 | | |
| 3/4" Expansion bolts | Each | 28 | | |



SECTION A-A



SECTION THRU BARREL

REVISIONS

| | |
|---------|------------------|
| DRAWN | 2-04 |
| REVISED | 5-09 SHT CELL |
| REVISED | |
| REVISED | |

BASED ON: SSB-H-0 6-1-2000

| | | | |
|--|----------------------|------------|-----------|
| FILE NAME = | USER NAME = kellejkd | DESIGNED - | REVISED - |
| c:\pwwork\pwwork\kellejkd\0205717\78215-100.7001.dgn | | DRAWN - | REVISED - |
| PLOT SCALE = 100.0000' / 1in. | | CHECKED - | REVISED - |
| PLOT DATE = 12/15/2011 | | DATE - | REVISED - |

STATE OF ILLINOIS
DEPARTMENT OF TRANSPORTATION

BOX CULVERT EXT. STA. 13+38.33(WB) & 23+66.53(EB)
12' X 8', SKEW 0° EXTEND 14'- 0"

SCALE: SHEET NO. OF SHEETS STA. TO STA.

| | | | | |
|---------------------------|-------------------|------------|--------------|-----------|
| F.A.P. RTE. | SECTION | COUNTY | TOTAL SHEETS | SHEET NO. |
| 331 | (1-4)R-1,N-3,TS-3 | Williamson | 219 | 95 |
| CONTRACT NO. 78216 | | | | |
| ILLINOIS FED. AID PROJECT | | | | |