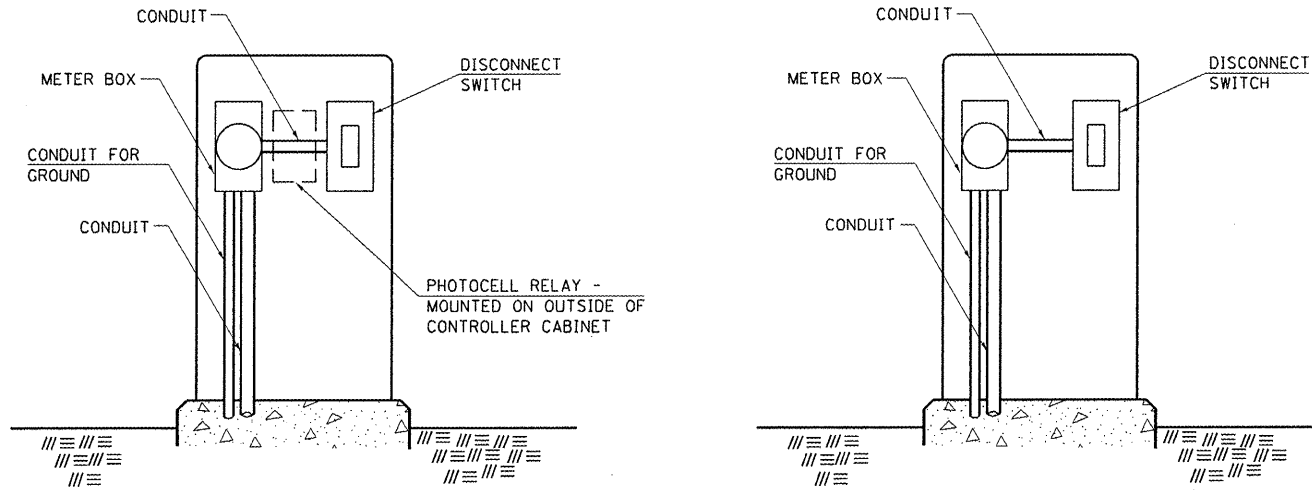


SERVICE INSTALLATION DETAILS



SERVICE INSTALLATION (SPECIAL)
WITH PHOTOCELL RELAY

SERVICE INSTALLATION (SPECIAL)

NOTE:
MATERIAL AND SIZE OF CONDUIT
AND CABLE AS REQUIRED BY
UTILITY COMPANY

STD. 9-68

REVISIONS	
DRAWN	1-31-90
REVISED	2-24-92
RESIZED	5-7-08

REVISIONS	
REDRAWN	5-13-02
REVISED	10-27-05
REVISED	3-26-08
REVISED	

STD. 9-92

DETAIL OF DETECTOR LOOPS

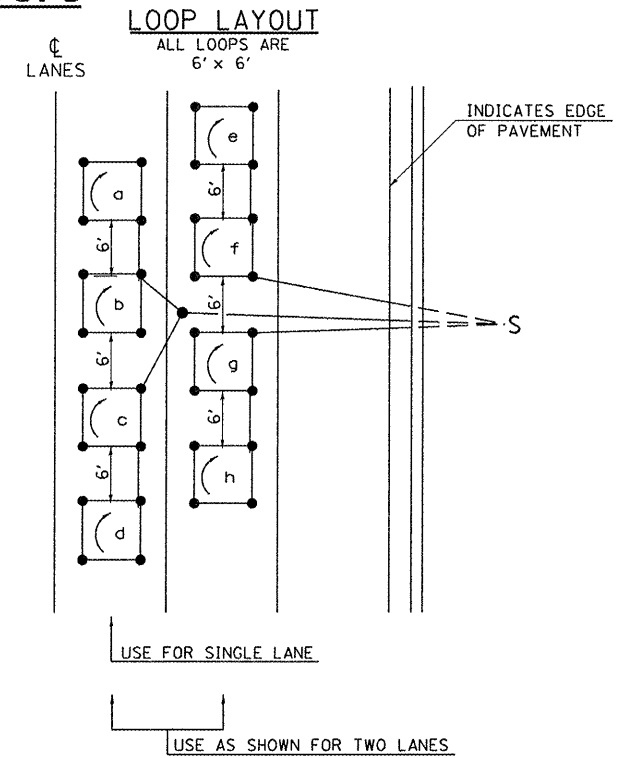
NOTES

(APPLIES TO 6' x 6' LOOPS ONLY)

1. THE DETECTOR LOOPS SHALL BE TYPE I. EACH DETECTOR LOOP SHALL HAVE 3 TURNS OF LOOP WIRE AND BE INSTALLED IN ACCORDANCE WITH THE APPLICABLE PORTIONS OF SECTION 886 OF THE STANDARD SPECIFICATIONS FOR TRAFFIC CONTROL ITEMS.
2. BEGINNING LEAD WIRES SHALL BE CONNECTED TO THE BLACK LEAD AND THE ENDING LEAD WIRES SHALL BE CONNECTED TO THE WHITE LEAD OF THE TWIN TWISTED FEED CABLES AT THE SPLICE POINT.
3. WHERE THE LOOPS ARE INSTALLED PRIOR TO RESURFACING, THE LOOP CORNERS SHALL BE DIAGONALLY CUT.

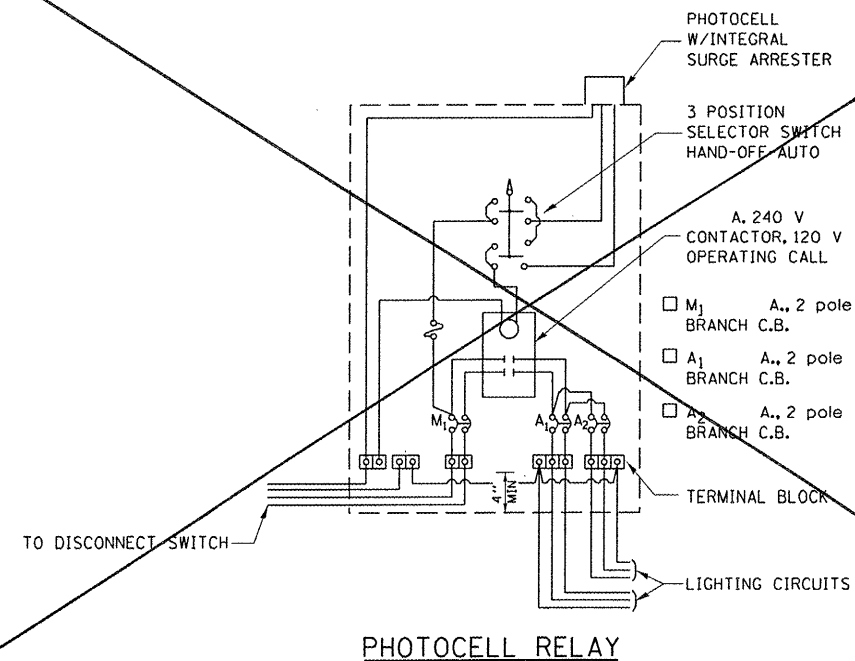
LOOP LEGEND

- () CLOCKWISE ROTATION FOR LOOP WIRES
- S INDICATES SPLICE POINT FOR DETECTOR LOOP LEAD
- INDICATES 2" CORE-DRILL



DETAIL 6' x 6' DETECTOR LOOPS

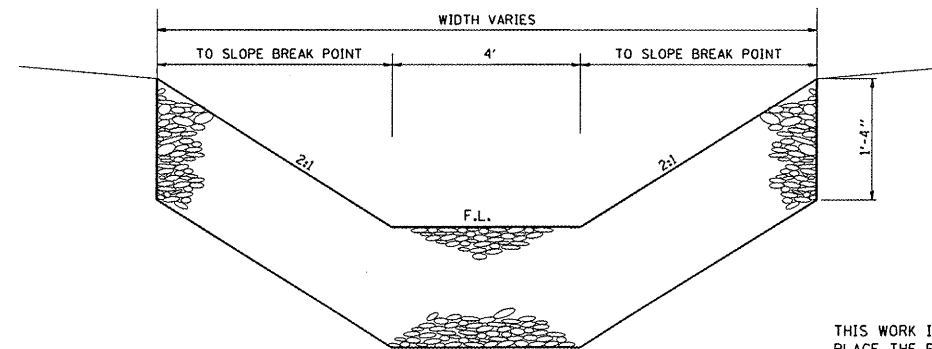
OUTDOOR LIGHTING CONTROL CABINET (GROUND MOUNT CABINET ONLY)



STD. 9-76

REVISIONS	
DRAWN	5-18-90
REVISED	5-13-02
REVISED	3-26-08
REVISED	

TYPICAL DETAIL OF STONE RIPRAP DITCH LINING



NOTES

- THIS WORK INCLUDES THE EARTH EXCAVATION REQUIRED TO PLACE THE RIPRAP AS SHOWN. THE MATERIAL RESULTING FROM THE EARTH EXCAVATION SHALL BE PLACED IN THE ROADWAY EMBANKMENT, OR WASTED AS DIRECTED BY THE ENGINEER. THE EARTHWORK SHALL BE CONSIDERED INCLUDED IN THE COST OF THE DITCH.
- THE RIPRAP DITCH SHALL BE CONSTRUCTED AT THE LOCATIONS SHOWN IN THE PLANS OR AS DIRECTED BY THE ENGINEER. CONSTRUCTION OF THE STONE RIPRAP DITCH SHALL CONFORM TO THE REQUIREMENTS FOR CLASS A4 RIPRAP AS INDICATED IN SECTION 281 OF STANDARD SPECIFICATIONS.
- THIS WORK SHALL BE PAID FOR AT THE CONTRACT UNIT PRICE PER SO YD FOR **STONE RIPRAP, CLASS A4**, WHICH PRICE SHALL INCLUDE ALL MATERIAL, LABOR AND EQUIPMENT TO COMPLETE THE WORK IN PLACE AS SHOWN.
- BEDDING MATERIAL AND FILTER FABRIC AS SPECIFIED IN SECTION 281 OF THE STANDARD SPECIFICATIONS WILL NOT BE REQUIRED.

FILE NAME =	USER NAME = kallejkd	DESIGNED -	REVISED -
c:\pwwork\pwwork\kallejkd\0205725\782	6-sht-misc.dgn	DRAWN -	REVISED -
PLOT SCALE = 100.0000' / in.	CHECKED -	DATE -	REVISED -
PLOT DATE = 12/15/2011	DATE -		

STATE OF ILLINOIS
DEPARTMENT OF TRANSPORTATION

DETAIL: SERVICE INSTALLATION; DETECTOR LOOPS;
OUTDOOR LIGHTING CONTROL CABINET; STONE RIPRAP DITCH LINING

SCALE: SHEET OF SHEETS STA. TO STA.

F.A.P. RTE.	SECTION	COUNTY	TOTAL SHEETS	SHEET NO.
331	(1-4R-1,N-3,T5-3	Williamson	220	98
CONTRACT NO. 78216			ILLINOIS FED. AID PROJECT	