

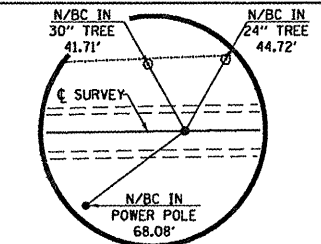
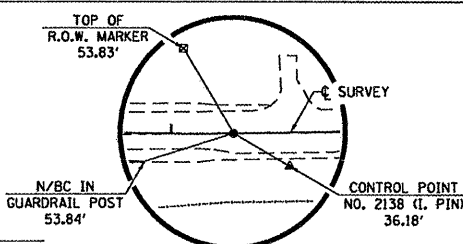
C.H.	SECTION	COUNTY	TOTAL SHEETS	SHEET NO.
9	06-00127-00-BR	JO DAVIESS	55	6
STA. 26+00 TO STA. 35+00			ILLINOIS	

CONTRACT NO. 85539

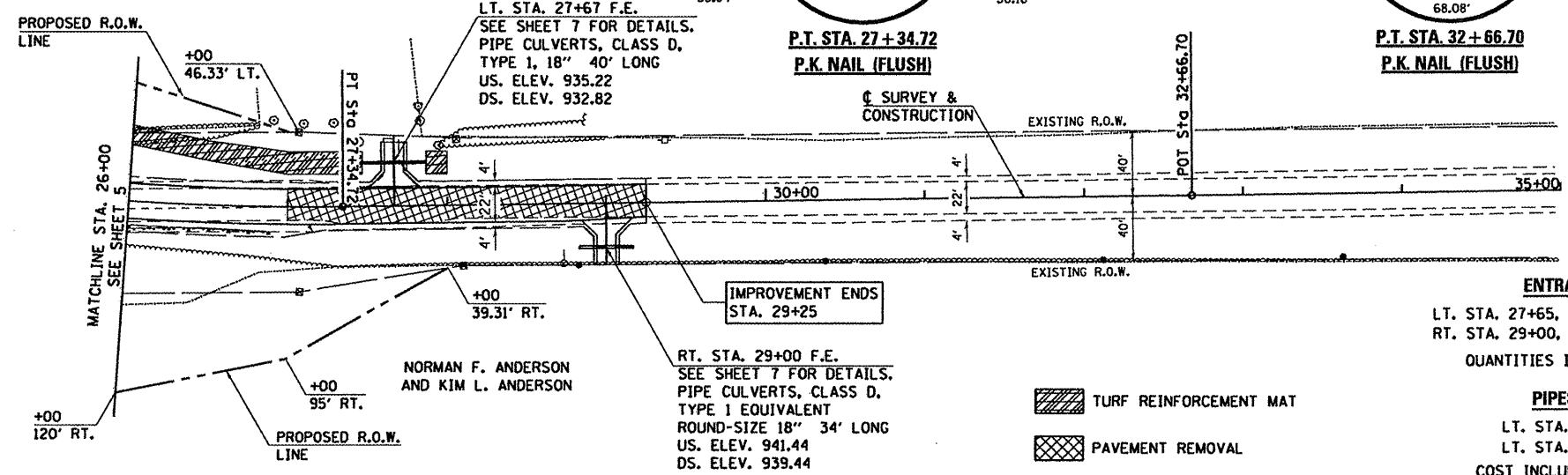
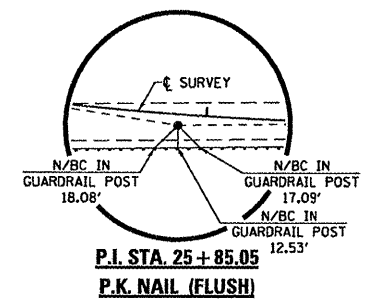
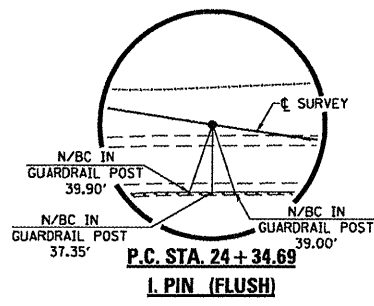
CURVE #2
 PI STA. = 25+85.05
 $\Delta = 9^\circ 30' 40''$ (LT)
 $D = 3^\circ 10' 12''$
 $R = 1,807.40'$
 $T = 150.36'$
 $L = 300.03'$
 $E = 6.24'$
 $S.E. = 5.5\%$
 P.C. STA. = 24+34.69
 P.T. STA. = 27+34.72
 TRANSITION:
 STA. 23+40.00 TO STA. 24+94.00
 STA. 26+97.00 TO STA. 28+51.00

S.E. 1/4, SEC. 25, T. 29 N., R. 3 E., 4TH P.M.

THOMAS G. HOLLAND SR.



DATE	
BY	
REVISION	
NO.	

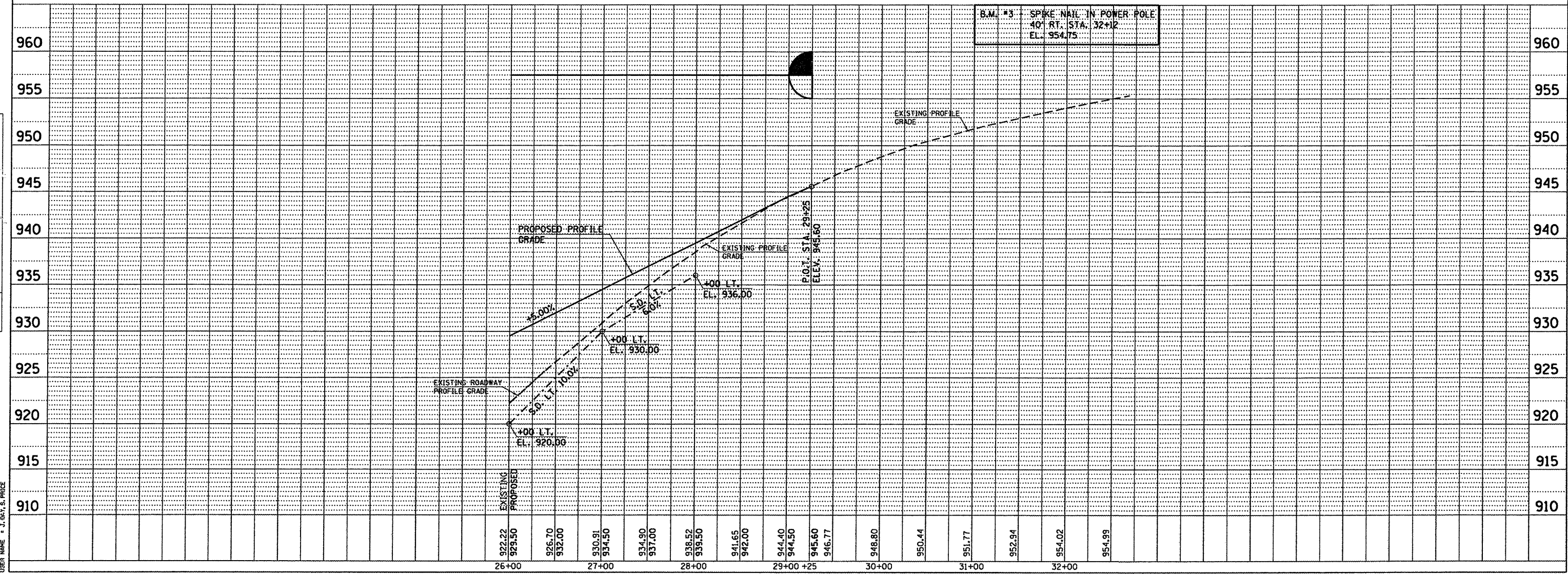


ENTRANCES TO BE BUILT
 LT. STA. 27+65, F.E. +1.0%, 16' ROADBED
 RT. STA. 29+00, F.E. -7.3%, 16' ROADBED
 QUANTITIES INCLUDED IN THOSE LISTED

PIPES TO BE REMOVED
 LT. STA. 23+90, C.M.P., 30' LONG
 LT. STA. 27+65, C.M.P., 30' LONG
 COST INCLUDED IN "EARTH EXCAVATION".

S.E. 1/4, SEC. 25, T. 29 N., R. 3 E., 4TH P.M.

DATE	
BY	
REVISION	
NO.	



DATE: 1/2/07
 FILE NAME: 4688032000
 PLOT SCALE: VARIES
 USER NAME: J. DAY, S. PRICE