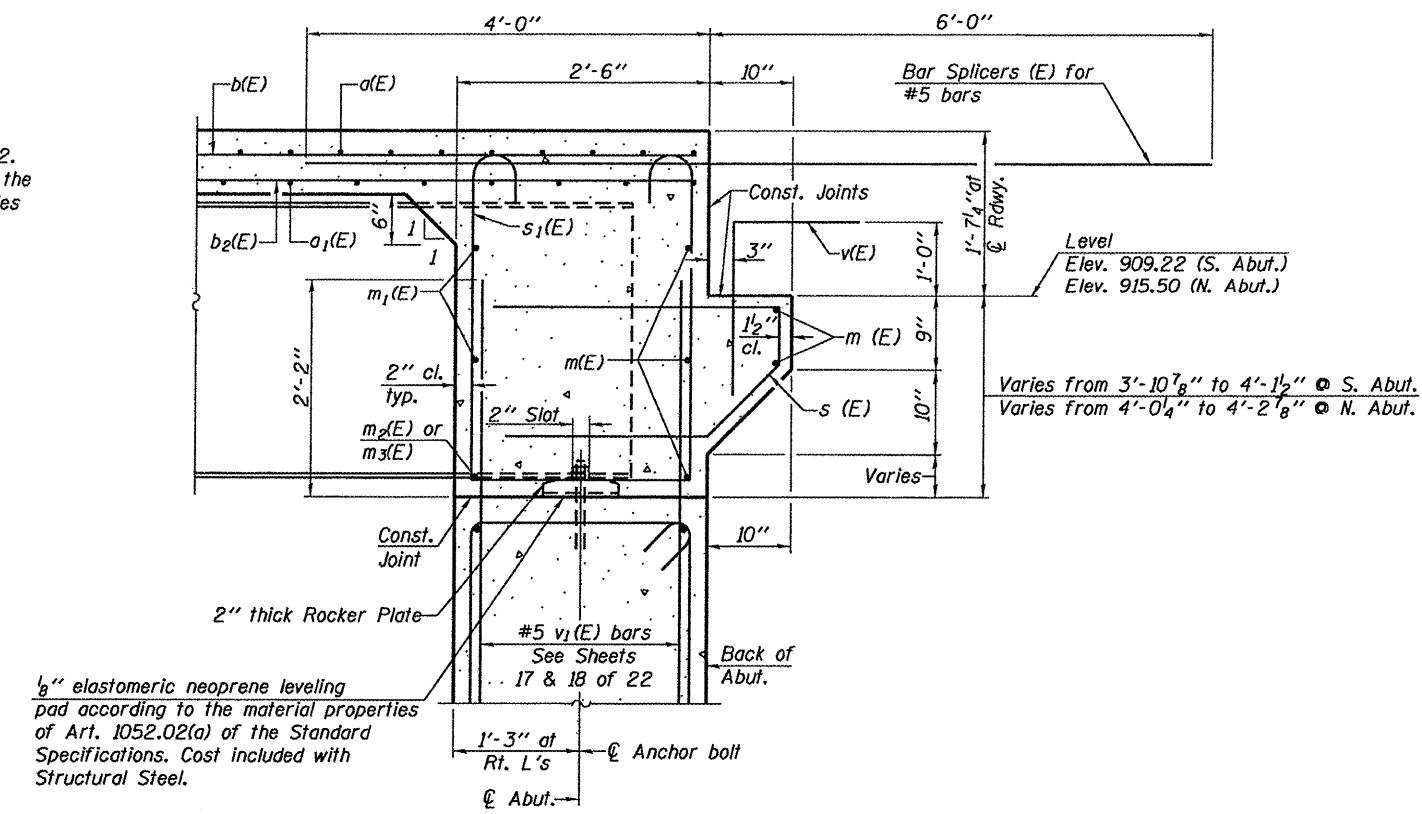


Notes:  
 Reinforcement bars in diaphragm are billed with superstructure on sheet 11 of 22.  
 Concrete in diaphragm is included with Concrete Superstructure on sheet 11 of 22.  
 For details of bars s(E) & s1(E) see sheet 11 of 22.  
 The s(E) and s1(E) bars shall be placed parallel to the girders. Spacing for these bars shall be at right angles to the girders.

**MIN. BAR LAP**  
 #6 bar = 3'-4"



**SECTION A-A**  
 Dimensions at right angles to abutment.

**SUPERSTRUCTURE DETAILS**  
 S.N. 043-3270

DESIGNED -	J.A.M.
CHECKED -	A.L.S.
DRAWN -	S.A.P.
CHECKED -	J.A.M. & A.L.S.

**FEHR-GRAHAM & ASSOCIATES, LLC**  
 ENGINEERING AND SCIENCE CONSULTANTS  
 FREEPORT, IL ROCKFORD, IL ROCHELLE, IL MONROE, WI SPRINGFIELD, IL  
 4440 ASH GROVE SPRINGFIELD, IL 62711 (217)-793-8800 www.fehr-graham.com

C.H.	SECTION	COUNTY	TOTAL SHEETS	SHEET NO.
9	06-00127-00-BR	JO DAVIESS	55	19
SCOUT CAMP ROAD		CONTRACT NO. 85539		
ILLINOIS				