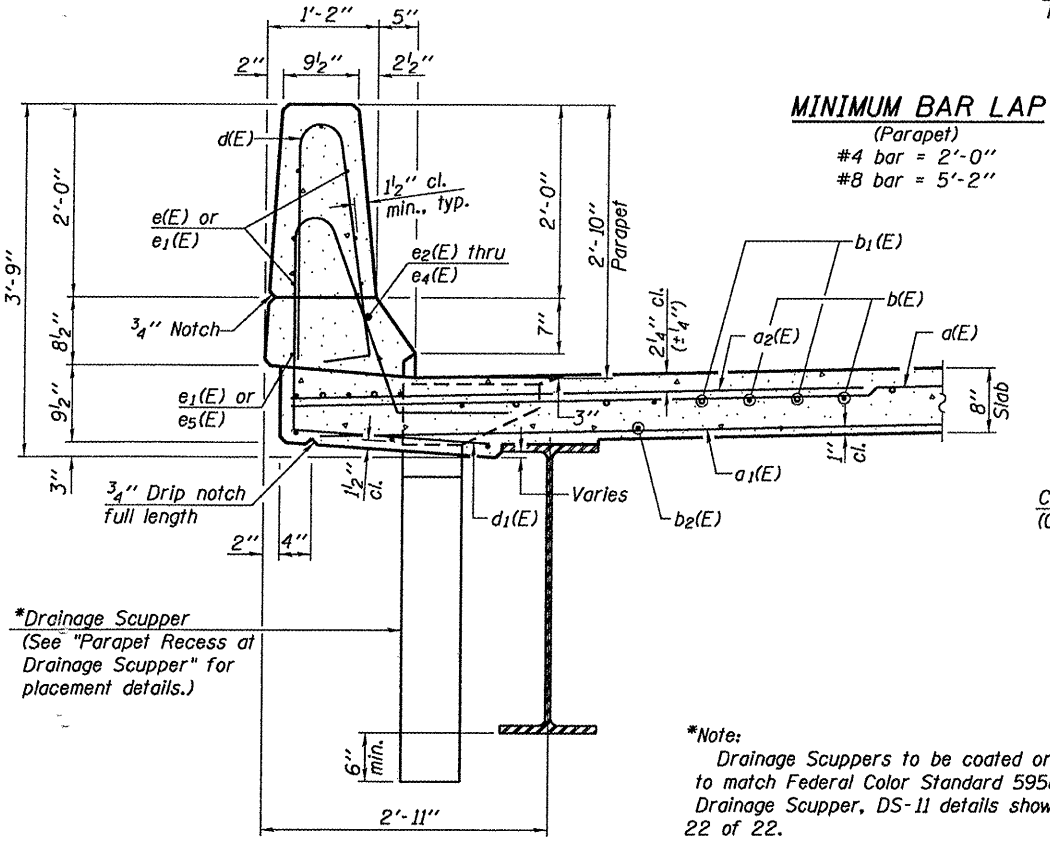
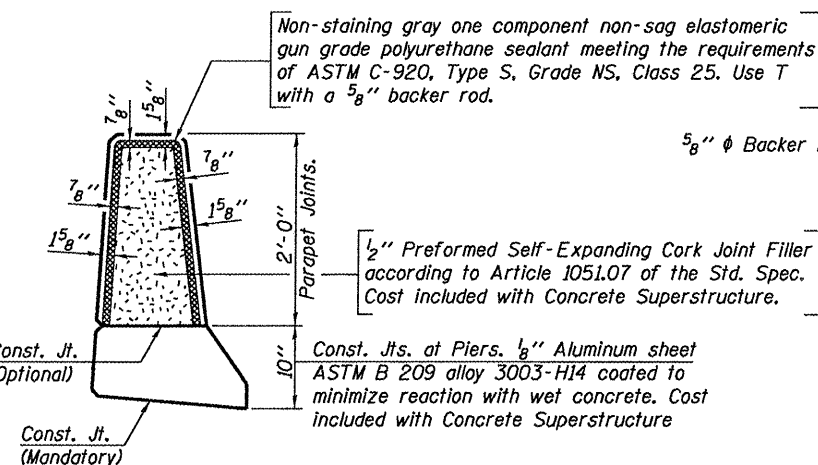


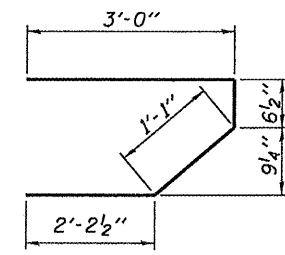
INSIDE ELEVATION OF PARAPET
(Looking West)



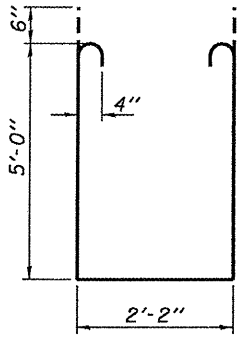
SECTION THRU PARAPET



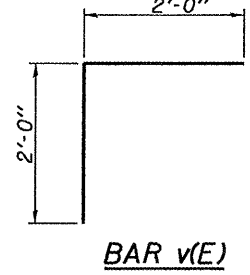
PARAPET JOINT DETAILS



BAR s(E)



BAR s1(E)

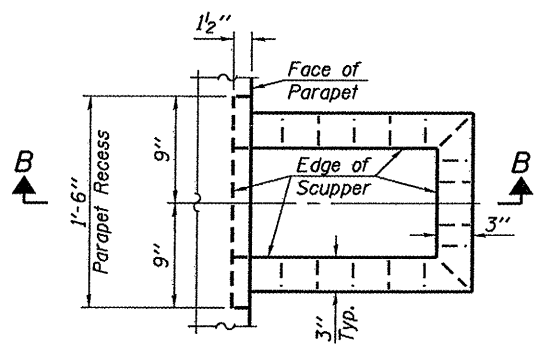


BAR v(E)

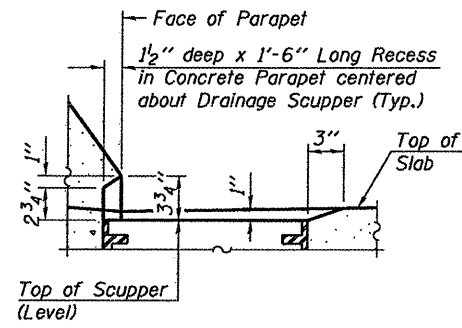
SUPERSTRUCTURE BILL OF MATERIAL

Bar	No.	Size	Length	Shape
d(E)	448	#5	32'-6"	—
e1(E)	291	#5	31'-10"	—
e2(E)	896	#6	6'-6"	—
e3(E)	112	#5	1'-6"	—
b(E)	324	#5	30'-0"	—
b1(E)	66	#6	41'-6"	—
b2(E)	304	#5	33'-3"	—
d(E)	530	#5	5'-7"	—
d1(E)	530	#5	7'-6"	—
e(E)	140	#4	19'-7"	—
e1(E)	32	#4	20'-10"	—
e2(E)	6	#8	30'-0"	—
e3(E)	8	#8	36'-9"	—
e4(E)	4	#8	20'-10"	—
e5(E)	20	#4	21'-8"	—
m(E)	10	#6	32'-10"	—
m1(E)	20	#6	10'-3"	—
m2(E)	4	#6	2'-7"	—
m3(E)	8	#6	6'-6"	—
s(E)	68	#5	6'-10"	—
s1(E)	60	#4	13'-2"	—
v(E)	66	#5	4'-0"	—
Reinforcement Bars, Epoxy Coated		Pound	72,030	
Concrete Superstructure		Cu. Yd.	292.7	
Bridge Deck Grooving		Sq. Yd.	754	
Protective Coat		Sq. Yd.	1,011	

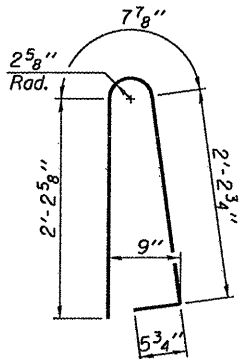
Bars indicated thus 1 x 4-#5 etc. indicates 1 line of bars with 4 lengths per line.



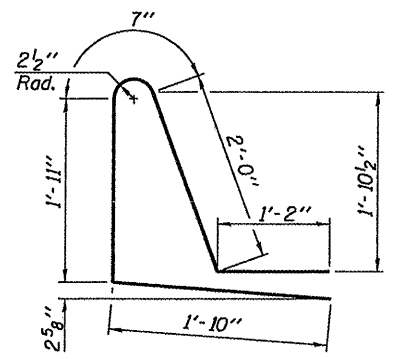
PLAN



SECTION B-B



BAR d(E)



BAR d1(E)

SUPERSTRUCTURE DETAILS
S.N. 043-3270

DESIGNED -	J.A.M.
CHECKED -	A.L.S.
DRAWN -	S.A.P.
CHECKED -	J.A.M. & A.L.S.

S-I-D 5-16-08

FEHR-GRAHAM & ASSOCIATES, LLC
ENGINEERING AND SCIENCE CONSULTANTS
FREEPORT, IL ROCKFORD, IL ROCHELLE, IL MONROE, WI SPRINGFIELD, IL
4440 ASH GROVE SPRINGFIELD, IL 62711 (217)-793-9600 www.fehr-graham.com

C.H.	SECTION	COUNTY	TOTAL SHEETS	SHEET NO.
9	06-00127-00-BR	JO DAVIESS	55	20
SCOUT CAMP ROAD			CONTRACT NO. 85539	
ILLINOIS				