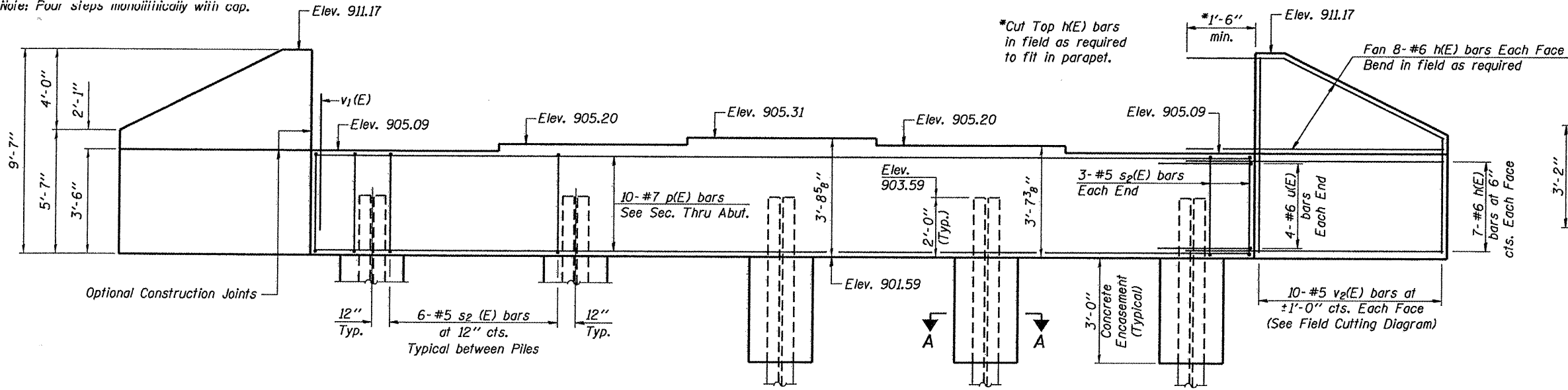
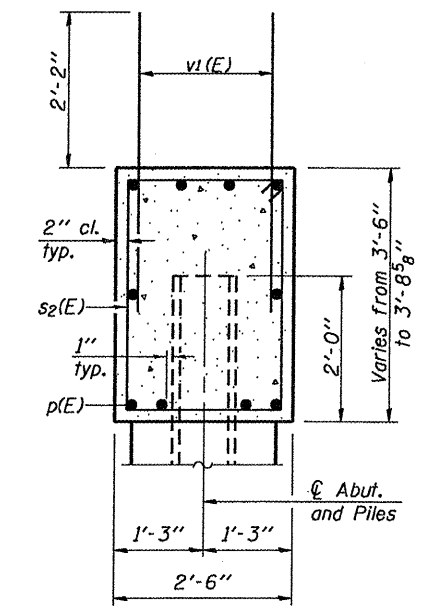


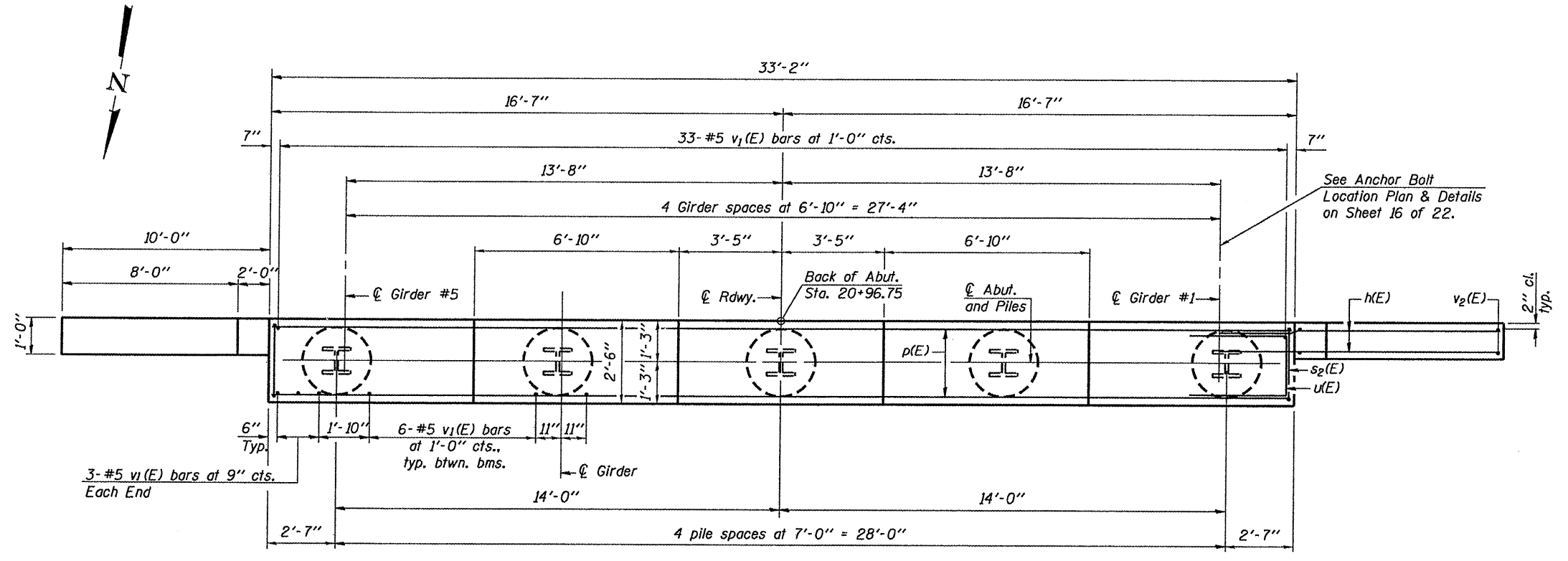
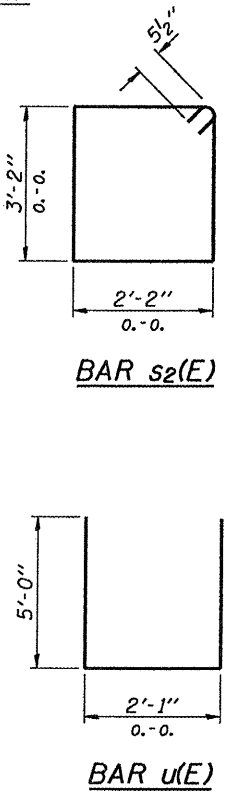
Note: Four steps monolithically with cap.



ELEVATION



SEC. THRU ABUT.



PLAN

SOUTH ABUTMENT BILL OF MATERIAL

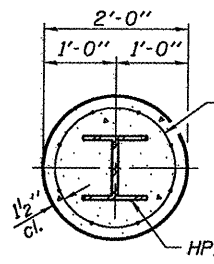
Bar	No.	Size	Length	Shape
h(E)	60	#6	12'-6"	—
p(E)	10	#7	32'-10"	—
s2(E)	30	#5	11'-7"	□
u(E)	8	#6	12'-1"	—
v1(E)	63	#5	4'-4"	—
v2(E)	20	#5	14'-8"	—
Structure Excavation	Cu. Yd.		75	
Concrete Structures	Cu. Yd.		17.2	
Reinforcement Bars, Epoxy Coated	Pound		2,900	
Furnishing Steel Piles, Steel HP12x63	Foot		200	
Driving Piles	Foot		200	
Test Pile, Steel HP12x63	Each		1	
Concrete Encasement	Cu. Yd.		1.8	

For details of piles see sheet 20 of 22.

PILE DATA

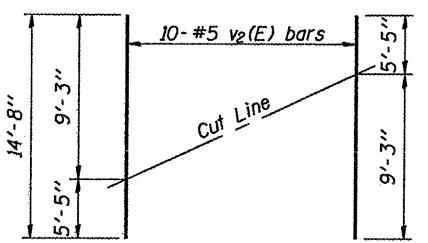
Type: Steel HP12x63
 Nominal Required Bearing: 495 kips
 Factored Resistance Available: 165 kips
 Est. Length: 50 ft.
 No. Production Piles: 4
 No. Test Piles: 1

The Steel Piles shall be according to AASHTO M270 Grade 50.



SECTION A-A Concrete Encasement

Welded wire fabric 6 x 6-W4.0 x W4.0 weighing 58#/100 sq. ft. The cost of Excavation, and Reinforcement is included with Concrete Encasement. Forms for Encasement may be omitted when soil conditions permit. Extend welded wire fabric 2'-0" min. into abutment cap.



FIELD CUTTING DIAGRAM

Order v2(E) full length. Cut as shown and use remainder of bars in opposite face.

SOUTH ABUTMENT S.N. 043-3270

DESIGNED	J.A.M.
CHECKED	A.L.S.
DRAWN	S.A.P.
CHECKED	J.A.M. & A.L.S.

AI-0 5-16-08 FILE: 46860.ABUTS.DGN DATE: 03/24/11

FEHR-GRAHAM & ASSOCIATES, LLC
 ENGINEERING AND SCIENCE CONSULTANTS
 FREEPORT, IL ROCKFORD, IL ROCHELLE, IL MONROE, WI SPRINGFIELD, IL
 4440 ASH GROVE SPRINGFIELD, IL 62711 (217)-793-9800 www.fehr-graham.com

C.H.	SECTION	COUNTY	TOTAL SHEETS	SHEET NO.
9	06-00127-00-BR	JO DAVIESS	55	26
SCOUT CAMP ROAD			CONTRACT NO. 85539	
ILLINOIS				