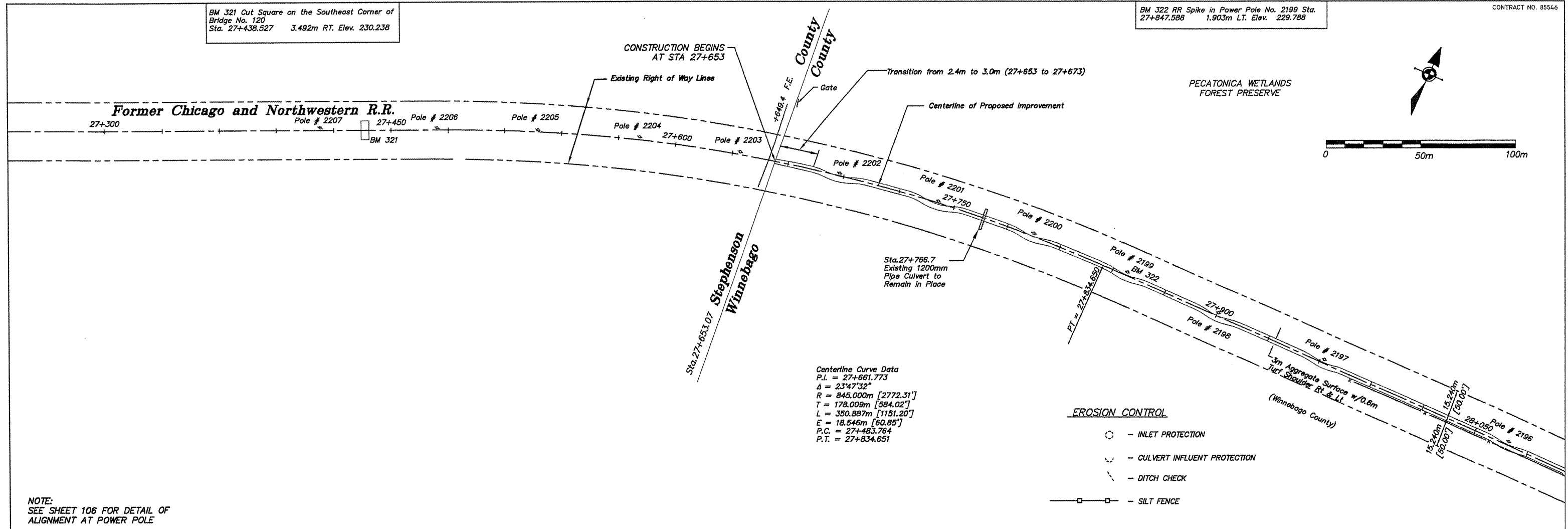


BM 321 Cut Square on the Southeast Corner of Bridge No. 120
Sta. 27+438.527 3.492m RT. Elev. 230.238

BM 322 RR Spike in Power Pole No. 2199 Sta. 27+847.588 1.903m LT. Elev. 229.788

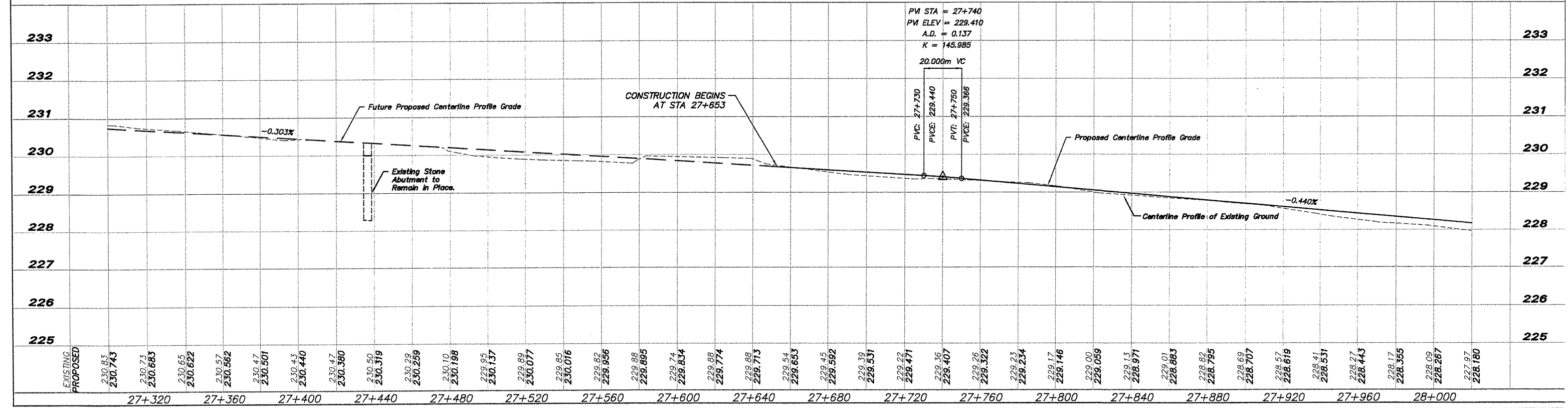
CONTRACT NO. 85546



Centerline Curve Data

P.I. = 27+661.773
Δ = 23°47'32"
R = 845.000m [2772.31']
T = 178.009m [584.02']
L = 350.887m [1151.20']
E = 18.546m [60.85']
P.C. = 27+483.764
P.T. = 27+834.651

NOTE:
SEE SHEET 106 FOR DETAIL OF ALIGNMENT AT POWER POLE



EXISTING	PROPOSED
230.83	230.743
230.73	230.683
230.65	230.622
230.57	230.562
230.47	230.501
230.43	230.440
230.47	230.380
230.50	230.319
230.29	230.259
230.10	230.198
229.95	230.137
229.89	230.077
229.85	230.016
229.82	229.956
229.88	229.895
229.74	229.834
229.88	229.774
229.88	229.713
229.54	229.653
229.45	229.592
229.39	229.531
229.22	229.471
229.36	229.410
229.26	229.349
229.23	229.288
229.17	229.227
229.00	229.166
228.91	229.105
228.83	229.044
228.82	228.983
228.69	228.922
228.57	228.861
228.41	228.799
228.27	228.738
228.17	228.677
228.09	228.616
227.97	228.555
228.180	228.494

SHEET REVIEW	
AGENCY	DATE

REVISIONS		
NO.	ITEM	DATE

SCALE: Hor. = 1:1000 Ver. = 1:50
DRAWN BY: REK
CHECKED BY: JWH
DATE: DECEMBER 12, 2011

McClure
Engineering Associates, Inc.
7282 Argus Drive Rookford, Illinois 61077-6837
(815) 398-2332 FAX (815) 398-2488
Design Firm License: Illinois 154-000816
Copyright 2011 By McClure Engineering Associates, Inc.

PLAN & PROFILE 27+653 TO 28+020
PECATONICA PRAIRIE PATH
WINNEBAGO COUNTY HIGHWAY DEPARTMENT SECTION 94-00267-00-BT
FILE: H:\10-042 WINN CO PEC PATH\DESIGN\DRAWINGS\10-042 PP27+653 TO 28+020.DWG JOB: 04-30-10-042

SHEET NO.
11
OF
107