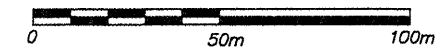


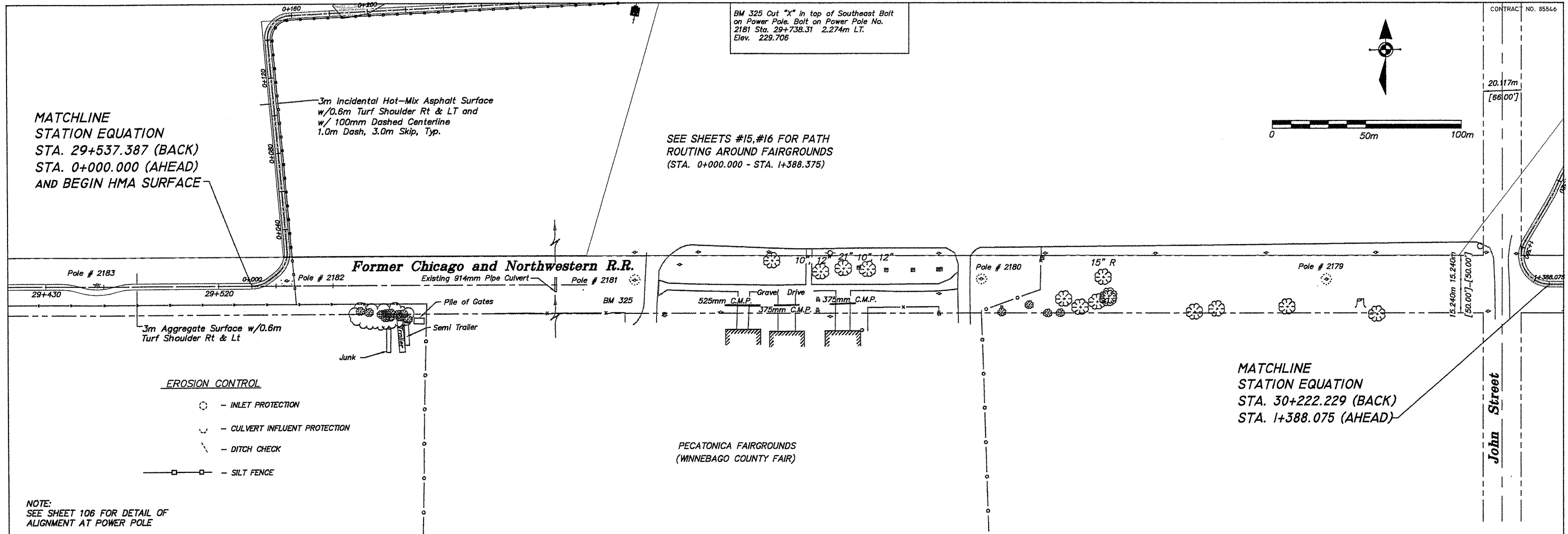
BM 325 Cut "X" in top of Southeast Bolt on Power Pole. Bolt on Power Pole No. 2181 Sta. 29+738.31 2.274m LT. Elev. 229.706



MATCHLINE
STATION EQUATION
STA. 29+537.387 (BACK)
STA. 0+000.000 (AHEAD)
AND BEGIN HMA SURFACE

SEE SHEETS #15, #16 FOR PATH ROUTING AROUND FAIRGROUNDS (STA. 0+000.000 - STA. 1+388.375)

20.17m
[66'00"]



- EROSION CONTROL**
- - INLET PROTECTION
 - ⋄ - CULVERT INFLUENT PROTECTION
 - - - DITCH CHECK
 - - SILT FENCE

NOTE:
SEE SHEET 106 FOR DETAIL OF ALIGNMENT AT POWER POLE



EXISTING	228.77	228.73	228.75	228.83	228.84	228.94	229.11	228.80
PROPOSED	228.806	228.834	228.837	228.83	228.841	228.94	229.11	228.80

SHEET REVIEW	
AGENCY	DATE

REVISIONS		
NO.	ITEM	DATE

SCALE: Hor. = 1:1000 Ver. = 1:50
DRAWN BY: REK
CHECKED BY: JWH
DATE: DECEMBER 12, 2011

McClure
Engineering Associates, Inc.
7282 Argus Drive Rockford, Illinois 61107-5837
(815) 398-2332 FAX (815) 398-2496
Design Firm License: Illinois 184-000816
Copyright 2011 By McClure Engineering Associates, Inc.

PLAN & PROFILE 29+460 TO 29+580
PECATONICA PRAIRIE PATH
WINNEBAGO COUNTY HIGHWAY DEPARTMENT SECTION 94-00267-00-BT
FILE: H:\10-042 WINN CO PEC PATH\DESIGN\DRAWINGS\10-042 PP29+460 TO 29+580.DWG JOB: 04-30-10-042

SHEET NO.
14
OF
107