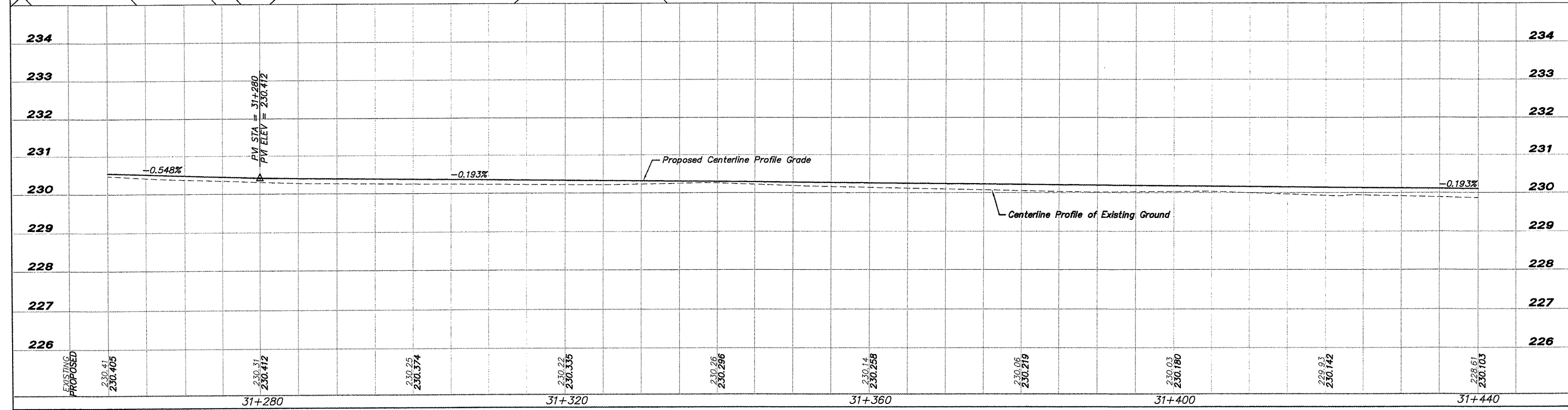


EROSION CONTROL

- - INLET PROTECTION
- ∩ - CULVERT INFLUENT PROTECTION
- - - DITCH CHECK
- SILT FENCE

NOTE:
SEE SHEET 106 FOR DETAIL OF
ALIGNMENT AT POWER POLE



NO.	REVISIONS	DATE

SHEET REVIEW	
AGENCY	DATE

REVISIONS		
NO.	ITEM	DATE

SCALE: Hor. = 1:250 Ver. = 1:50
 DRAWN BY: REK
 CHECKED BY: JWH
 DATE: DECEMBER 12, 2011

McClure
 Engineering Associates, Inc.
 7282 Argus Drive Rockford, Illinois 61107-5837
 (815) 398-2332 FAX (815) 398-2498
 Design Firm License: Illinois 184-000816
 Copyright 2011 By McClure Engineering Associates, Inc.

PLAN & PROFILE 31+260 TO 31+440
 PECATONICA PRAIRIE PATH
 WINNEBAGO COUNTY HIGHWAY DEPARTMENT SECTION 94-00267-00-BT
 FILE: H:\10-042 WINN CO PEC PATH\DESIGN\DRAWINGS\10-042 PP31+260 TO 31+440.DWG JOB: 04-30-10-042

SHEET NO.
23
 OF
107