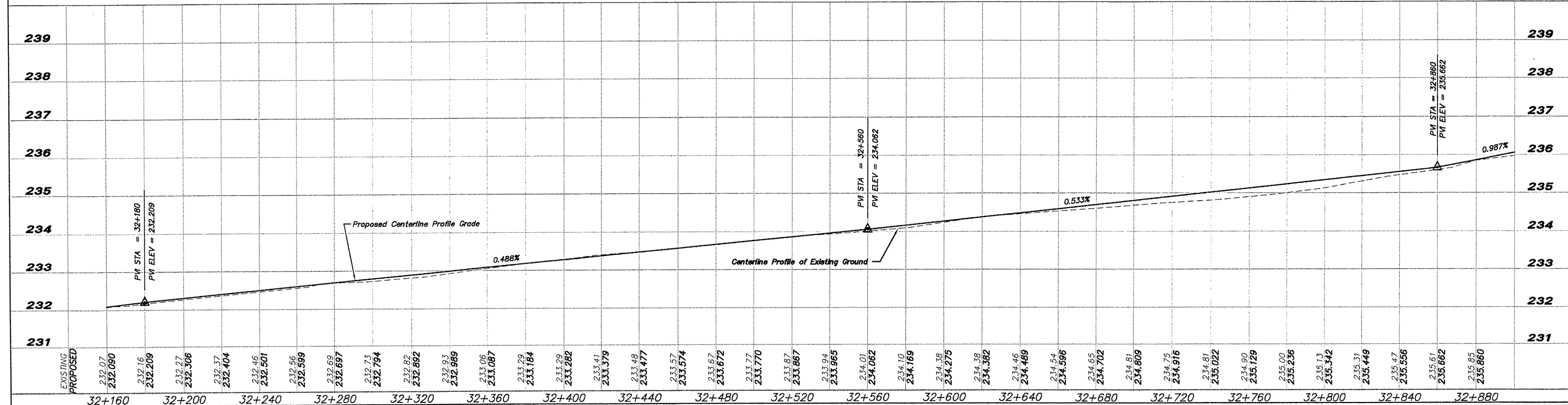


INSTALL SHEET PILING AS DIRECTED AT THE FOLLOWING LOCATIONS:  
 STA. 32+164.097, 4.590 m RT  
 STA. 32+258.341, 5.135 m RT  
 STA. 32+377.570, 4.238 m RT  
 STA. 32+484.069, 4.024 m RT  
 STA. 32+579.958, 5.196 m RT  
 STA. 32+697.246, 3.858 m RT  
 APPROXIMATELY 15m EACH LOCATION

- - INLET PROTECTION
- ⋄ - CULVERT INFLUENT PROTECTION
- - - DITCH CHECK
- SILT FENCE

NOTE:  
 SEE SHEET 106 FOR DETAIL OF ALIGNMENT AT POWER POLE



	SHEET REVIEW AGENCY _____ DATE _____ _____ _____	REVISIONS NO. _____ ITEM _____ DATE _____ _____ _____	SCALE: Hor. = 1:1000 Ver. = 1:50 DRAWN BY: REK CHECKED BY: JWH DATE: DECEMBER 12, 2011	 7282 Argus Drive (815) 368-2332 Rookford, Illinois 6107-6837 Design Firm License: Illinois 184-000816 FAX (815) 368-2498 Copyright 2011 By McClure Engineering Associates, Inc.	<b>PLAN &amp; PROFILE 32+160 TO 32+880</b> PECAATONICA PRAIRIE PATH WINNEBAGO COUNTY HIGHWAY DEPARTMENT SECTION 94-00267-00-BT FILE: H:\10-042 WINN CO PEC PATH\DESIGN\DRAWINGS\10-042 PP32+160 TO 32+880.DWG JOB: 04-30-10-042	SHEET NO. <b>25</b> OF <b>107</b>
--	---	--	---	--	--	--