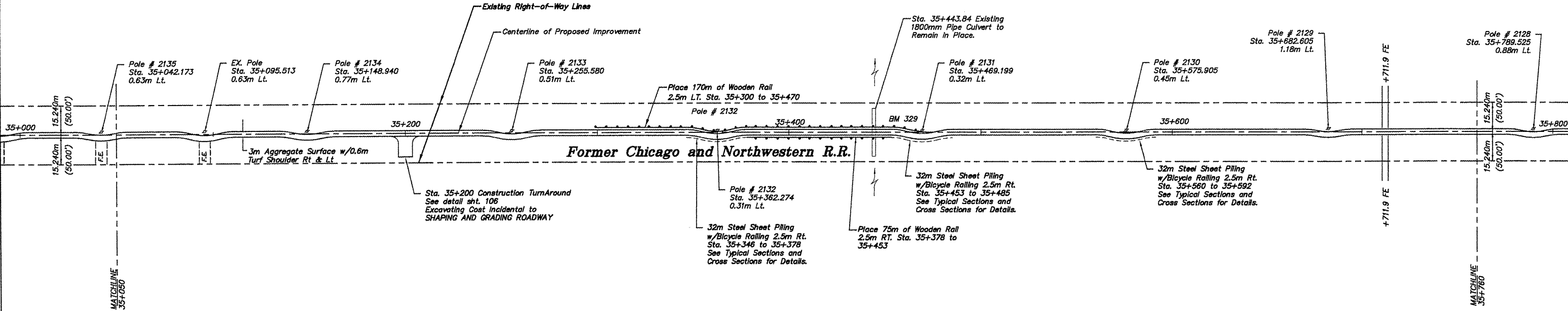
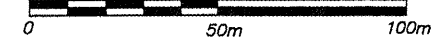
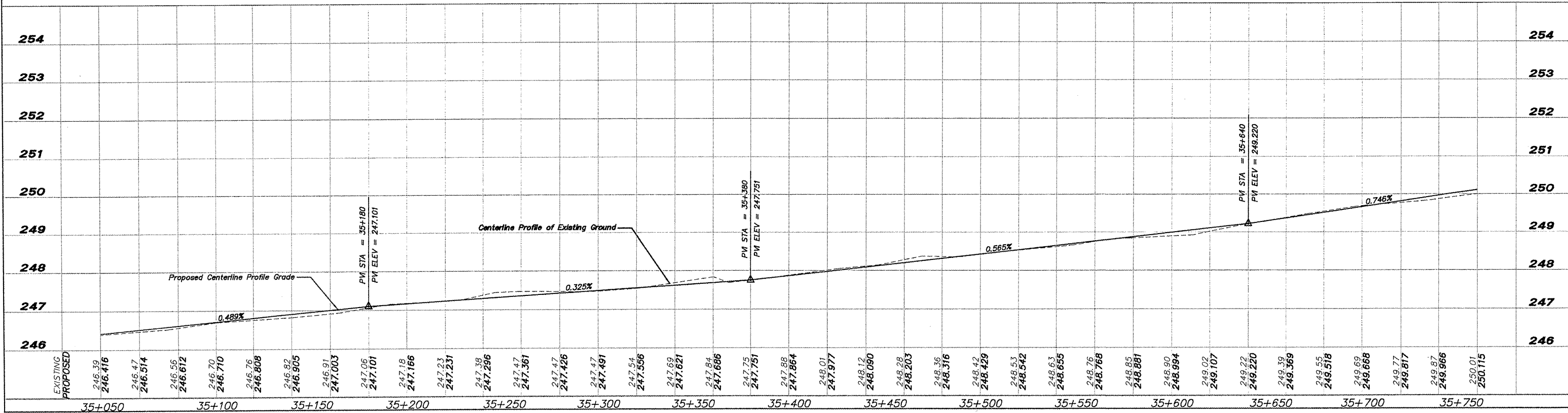


BM 329 RR Spike in Power Pole #2131
Sta. 35+469.196, 0.955 m LT
Elev. 249.109

CONTRACT NO. 65546



NOTE:
SEE SHEET 106 FOR DETAIL OF
ALIGNMENT AT POWER POLE



EXISTING	PROPOSED
246.39	246.416
246.47	246.514
246.56	246.612
246.70	246.710
246.76	246.808
246.82	246.905
246.91	247.003
247.06	247.101
247.18	247.166
247.23	247.231
247.38	247.296
247.47	247.361
247.47	247.426
247.47	247.491
247.54	247.556
247.69	247.621
247.84	247.686
247.75	247.751
247.88	247.864
248.01	247.977
248.12	248.090
248.28	248.203
248.36	248.316
248.42	248.429
248.53	248.542
248.63	248.655
248.76	248.768
248.85	248.881
248.90	248.994
249.02	249.107
249.22	249.220
249.39	249.369
249.55	249.518
249.69	249.668
249.77	249.817
249.87	249.966
250.01	250.115

SHEET REVIEW	
AGENCY	DATE

REVISIONS		
NO.	ITEM	DATE

SCALE: Hor. = 1:1000 Ver. = 1:50
DRAWN BY: REK
CHECKED BY: JWH
DATE: DECEMBER 12, 2011

McClure
Engineering Associates, Inc.
7282 Argus Drive Rookford, Illinois 61107-5837
(815) 398-2332 FAX (815) 398-2498
Design Firm License: Illinois 184-000816
Copyright 2011 By McClure Engineering Associates, Inc.

PLAN & PROFILE 35+050 TO 35+760
PECATONICA PRAIRIE PATH
WINNEBAGO COUNTY HIGHWAY DEPARTMENT SECTION 94-00267-00-BT
FILE: H:\10-042 WINN CO PEC PATH\DESIGN\DRAWINGS\10-042 PP35+050 TO 35+760.DWG JOB: 04-30-10-042

SHEET NO.
29
OF
107