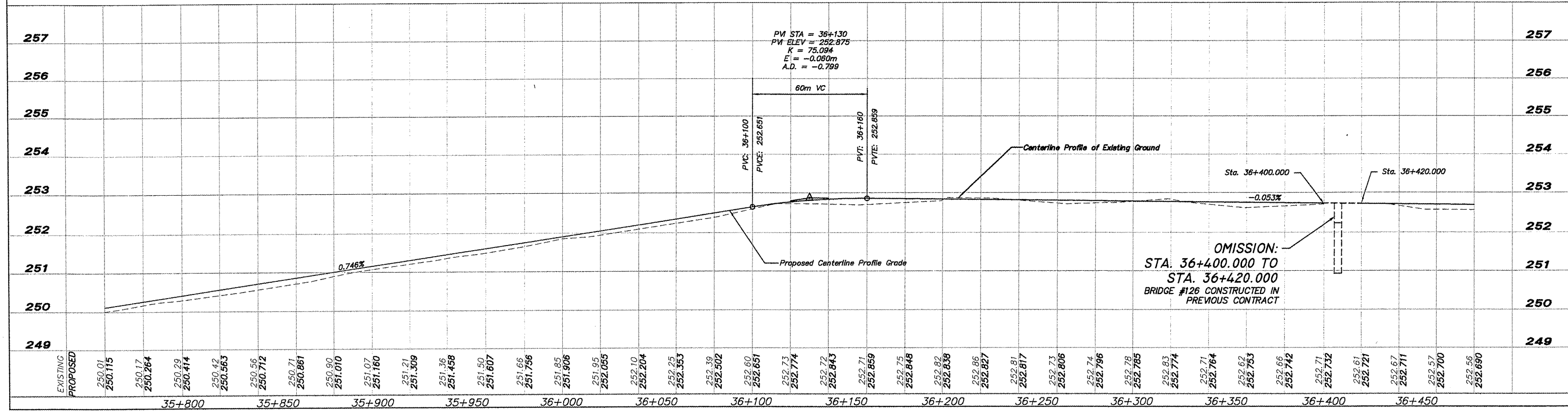
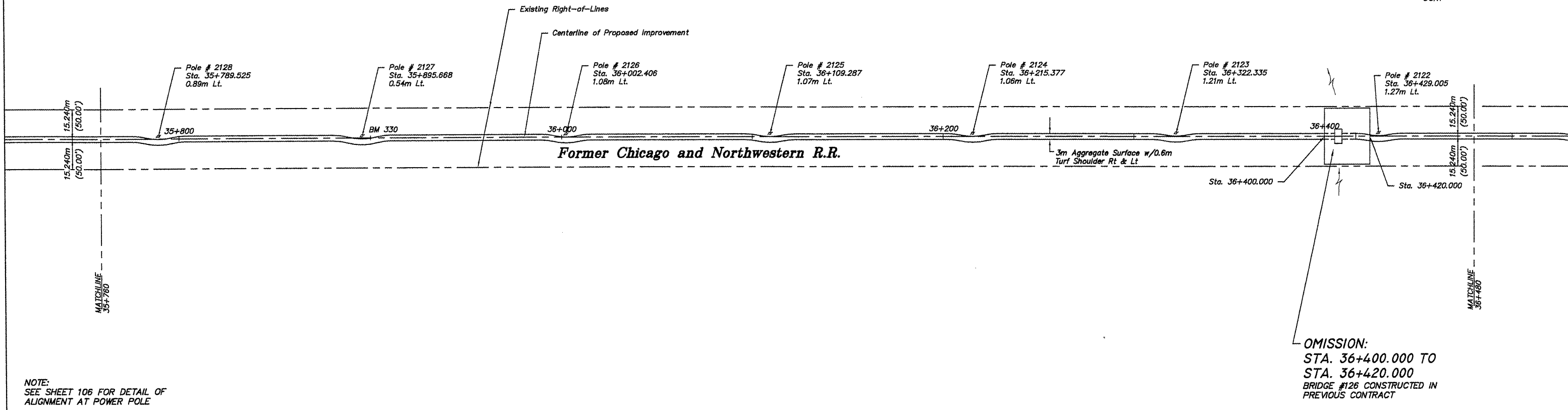
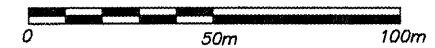


BM 330 RR Spike in Power Pole # 2127  
Sta. 35+895.660 1.17m LT.  
Elev. 251.854

CONTRACT NO. 85546



EXISTING	PROPOSED
250.01	250.115
250.17	250.264
250.29	250.414
250.42	250.563
250.56	250.712
250.71	250.861
250.90	251.010
251.07	251.160
251.21	251.309
251.36	251.458
251.50	251.607
251.66	251.756
251.85	251.906
251.95	252.055
252.10	252.204
252.25	252.353
252.39	252.502
252.60	252.651
252.73	252.774
252.72	252.843
252.71	252.859
252.75	252.848
252.82	252.838
252.86	252.827
252.81	252.817
252.73	252.806
252.74	252.796
252.78	252.785
252.83	252.774
252.71	252.764
252.62	252.753
252.66	252.742
252.71	252.732
252.61	252.721
252.67	252.711
252.57	252.700
252.56	252.690

SHEET REVIEW	
AGENCY	DATE

REVISIONS		
NO.	ITEM	DATE

SCALE: Hor. = 1:1000 Ver. = 1:50  
DRAWN BY: REK  
CHECKED BY: JWH  
DATE: DECEMBER 12, 2011

**McClure**  
Engineering Associates, Inc.  
7282 Argus Drive Rockford, Illinois 61107-5837  
(815) 398-2332 FAX (815) 398-2498  
Design Firm License: Illinois 184-000816  
Copyright 2011 By McClure Engineering Associates, Inc.

**PLAN & PROFILE 35+760 TO 36+480**  
PECATONICA PRAIRIE PATH  
WINNEBAGO COUNTY HIGHWAY DEPARTMENT SECTION 94-00267-00-BT  
FILE:H:\10-042 WINN CO PEC PATH\DESIGN\DRAWINGS\10-042 PP35+760 TO 36+480.DWG JOB:04-30-10-042

SHEET NO.  
**30**  
OF  
**107**