

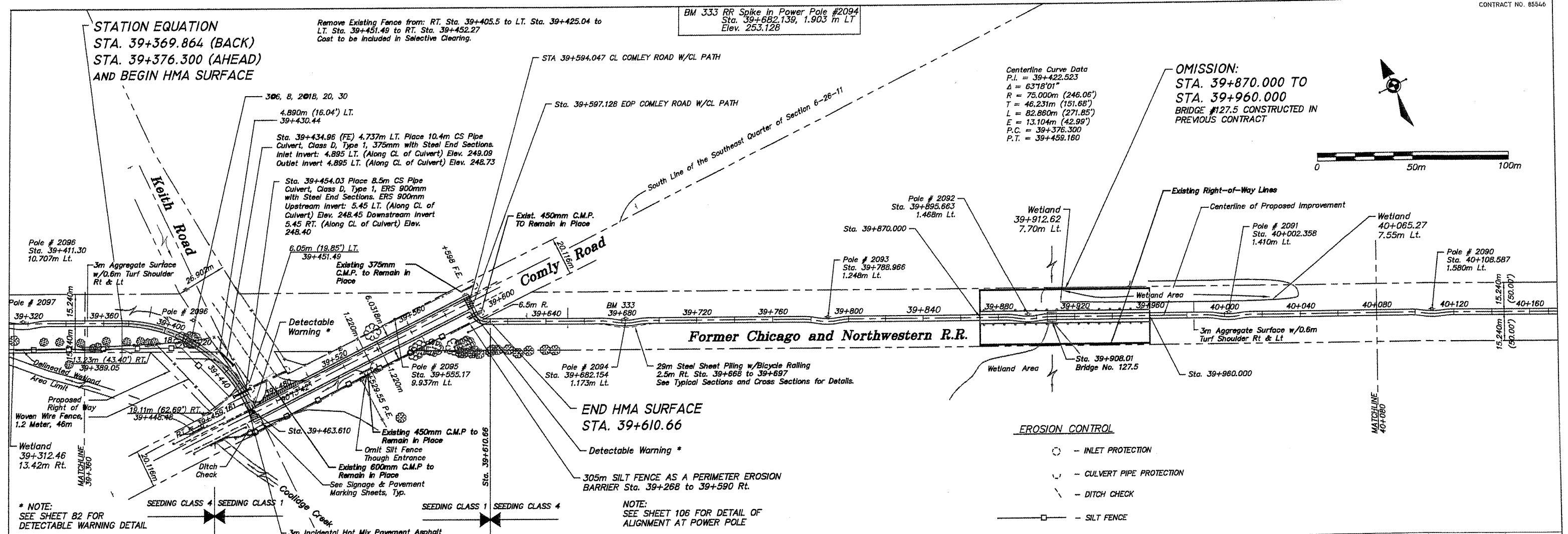
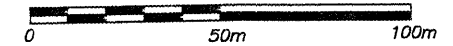
STATION EQUATION
 STA. 39+369.864 (BACK)
 STA. 39+376.300 (AHEAD)
 AND BEGIN HMA SURFACE

Remove Existing Fence from: RT. Sta. 39+405.5 to LT. Sta. 39+425.04 to
 LT. Sta. 39+451.49 to RT. Sta. 39+452.27
 Cost to be included in Selective Clearing.

BM 333 RR Spike in Power Pole #2094
 Sta. 39+682.139, 1.903 m LT
 Elev. 253.128

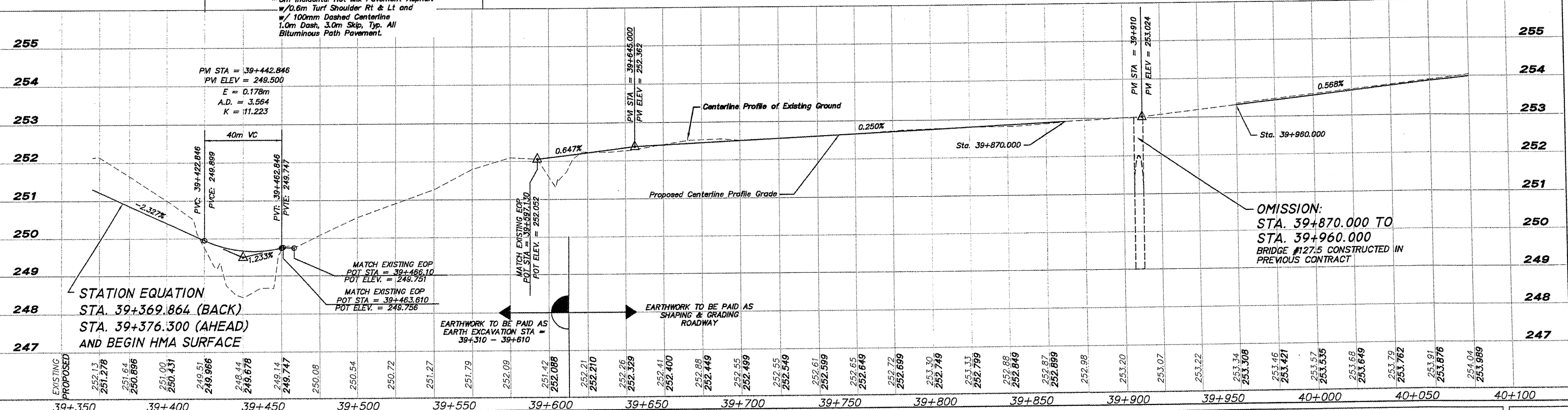
Centerline Curve Data
 P.I. = 39+422.523
 Δ = 63°18'01"
 R = 75.000m (246.06')
 T = 46.231m (151.68')
 L = 82.860m (271.85')
 E = 13.104m (42.99')
 P.C. = 39+376.300
 P.T. = 39+459.160

OMISSION:
 STA. 39+870.000 TO
 STA. 39+960.000
 BRIDGE #127.5 CONSTRUCTED IN
 PREVIOUS CONTRACT



* NOTE:
 SEE SHEET B2 FOR
 DETECTABLE WARNING DETAIL

NOTE:
 SEE SHEET 106 FOR DETAIL OF
 ALIGNMENT AT POWER POLE



OMISSION:
 STA. 39+870.000 TO
 STA. 39+960.000
 BRIDGE #127.5 CONSTRUCTED IN
 PREVIOUS CONTRACT

<p>SHEET REVIEW</p> <table border="1" style="width:100%; border-collapse: collapse;"> <tr> <th>AGENCY</th> <th>DATE</th> </tr> <tr> <td> </td> <td> </td> </tr> </table>	AGENCY	DATE			<p>REVISIONS</p> <table border="1" style="width:100%; border-collapse: collapse;"> <tr> <th>NO.</th> <th>ITEM</th> <th>DATE</th> </tr> <tr> <td> </td> <td> </td> <td> </td> </tr> </table>	NO.	ITEM	DATE				<p>SCALE: Hor. = 1:1000 Ver. = 1:50</p> <p>DRAWN BY: REK</p> <p>CHECKED BY: JWH</p> <p>DATE: DECEMBER 12, 2011</p>	<p>7282 Argus Drive Rockford, Illinois 61107-8937 (616) 398-2332 FAX (616) 398-2496 Design Firm License: Illinois 164-000816 Copyright 2011 By McClure Engineering Associates, Inc.</p>	<p>PLAN & PROFILE 39+360 TO 40+080</p> <p>PECATONICA PRAIRIE PATH</p> <p>WINNEBAGO COUNTY HIGHWAY DEPARTMENT SECTION 94-00267-00-BT</p> <p>FILE: H:\10-042 WINN CO PEC PATH\DESIGN\DRAWINGS\10-042 PP39+360 TO 40+080.DWG</p> <p>JOB:04-30-10-042</p>	<p>SHEET NO. 35 OF 107</p>
AGENCY	DATE														
NO.	ITEM	DATE													