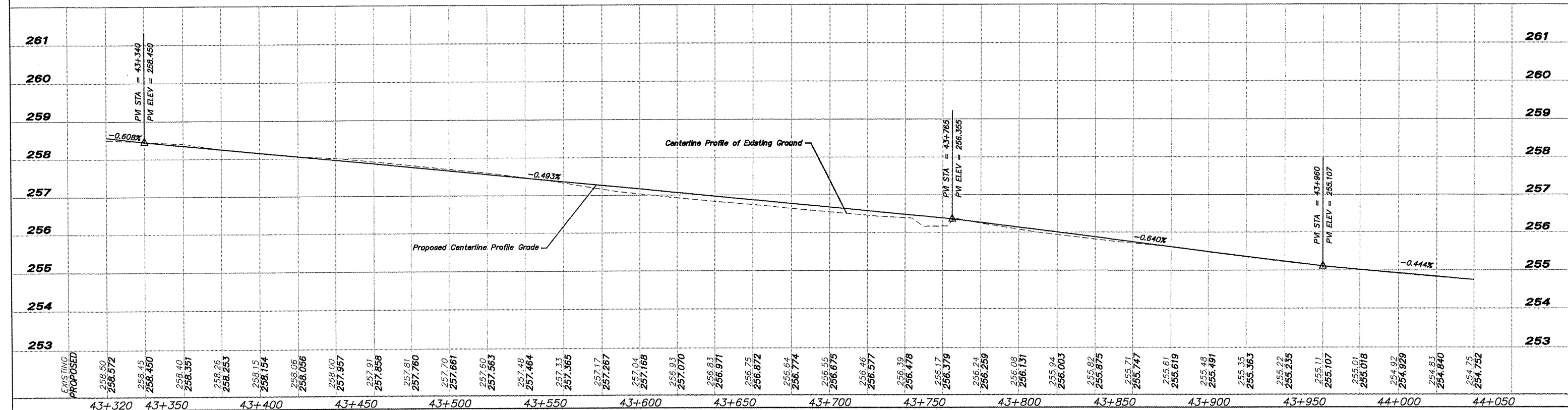


EROSION CONTROL

- - INLET PROTECTION
- ⌒ - CULVERT PIPE PROTECTION
- — — - DITCH CHECK
- □ — - SILT FENCE



EXISTING	PROPOSED	STATION	ELEVATION
258.50	258.572	43+320	
258.45	258.450	43+350	
258.40	258.351	43+400	
258.25	258.253	43+450	
258.15	258.154	43+500	
258.06	258.056	43+550	
258.00	257.967	43+600	
257.91	257.91	43+650	
257.858	257.858	43+700	
257.81	257.760	43+750	
257.70	257.661	43+800	
257.60	257.563	43+850	
257.48	257.464	43+900	
257.33	257.365	43+950	
257.17	257.267	44+000	
257.04	257.168	44+050	
256.93	257.070		
256.83	256.971		
256.75	256.872		
256.64	256.774		
256.55	256.675		
256.46	256.577		
256.39	256.478		
256.17	256.379		
256.24	256.259		
256.08	256.131		
255.94	256.003		
255.82	255.875		
255.71	255.747		
255.61	255.619		
255.48	255.491		
255.35	255.363		
255.22	255.235		
255.11	255.107		
255.01	255.018		
254.92	254.929		
254.83	254.840		
254.75	254.752		

SHEET REVIEW	
AGENCY	DATE

REVISIONS		
NO.	ITEM	DATE

SCALE: Hor.=1:1000 Ver.=1:50
 DRAWN BY: REK
 CHECKED BY: JWM
 DATE: DECEMBER 12, 2011

McClure
 Engineering Associates, Inc.
 7282 Argus Drive Rookford, Illinois 6107-6837
 (616) 388-2332 FAX (616) 388-2496
 Design Firm License: Illinois 184-000818
 Copyright 2011 By McClure Engineering Associates, Inc.

PLAN & PROFILE 43+320 TO 44+040
 PECATONICA PRAIRIE PATH
 WINNEBAGO COUNTY HIGHWAY DEPARTMENT SECTION 94-00267-00-BT
 FILE:H:\10-042 WINN CO PEC PATH\DESIGN\DRAWINGS\10-042 PP43+320 TO 44+040.DWG JOB:04-30-10-042

SHEET NO.
45
 OF
107