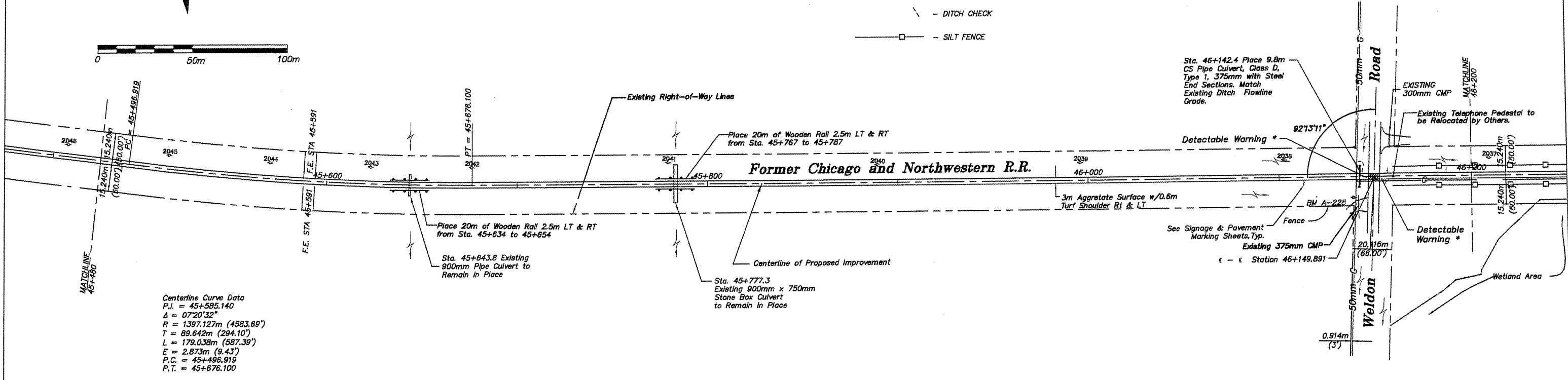
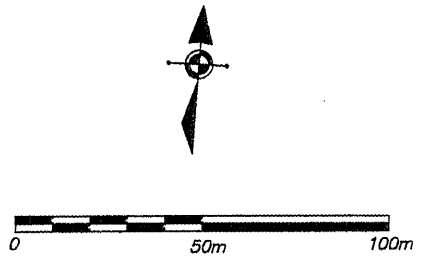


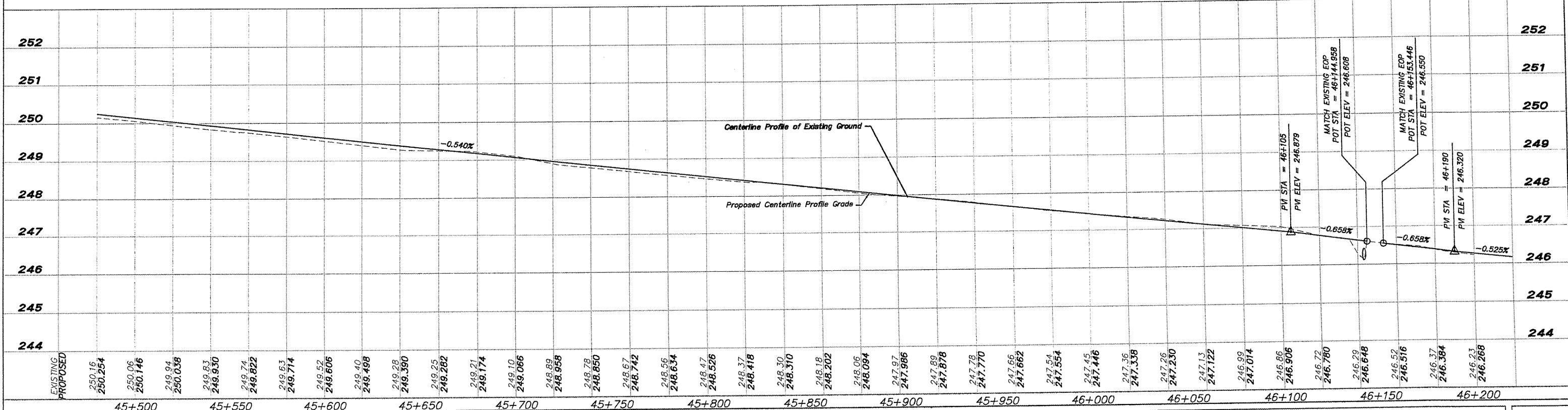
**EROSION CONTROL**

- - INLET PROTECTION
- ⌒ - CULVERT PIPE PROTECTION
- - - DITCH CHECK
- - SILT FENCE



Centerline Curve Data  
P.I. = 45+585.140  
Δ = 07°20'32"  
R = 1397.127m (4583.69')  
T = 89.642m (294.10')  
L = 179.038m (587.39')  
E = 2.873m (9.43')  
P.C. = 45+496.919  
P.T. = 45+676.100

\* NOTE:  
SEE SHEET 82 FOR  
DETECTABLE WARNING DETAIL



EXISTING	PROPOSED
250.16	250.254
250.06	250.146
249.94	250.038
249.83	249.930
249.74	249.822
249.63	249.714
249.52	249.606
249.40	249.498
249.28	249.390
249.25	249.282
249.21	249.174
249.10	249.066
248.99	248.958
248.78	248.850
248.67	248.742
248.56	248.634
248.47	248.526
248.37	248.418
248.30	248.310
248.18	248.202
248.06	248.094
247.97	247.986
247.89	247.878
247.78	247.770
247.66	247.662
247.54	247.554
247.45	247.446
247.36	247.338
247.26	247.230
247.13	247.122
246.99	247.014
246.86	246.906
246.72	246.798
246.52	246.648
246.37	246.516
246.384	246.384
246.23	246.268

SHEET REVIEW	
AGENCY	DATE

REVISIONS			
NO.	ITEM	DATE	

SCALE: Hor. = 1:1000 Ver. = 1:50
DRAWN BY: REK
CHECKED BY: JWH
DATE: DECEMBER 12, 2011

**McClure**  
Engineering Associates, Inc.  
7282 Argus Drive Rookford, Illinois 6107-5837  
(815) 396-2332 FAX (815) 396-2496  
Design Firm License: Illinois 14-000816  
Copyright 2011 By McClure Engineering Associates, Inc.

**PLAN & PROFILE 45+480 TO 46+200**  
PECATONICA PRAIRIE PATH  
WINNEBAGO COUNTY HIGHWAY DEPARTMENT SECTION 94-00267-00-BT  
FILE: H:\10-042 WINN CO PEC PATH\DESIGN\DRAWINGS\10-042 PP4.5+480 TO 46+200.DWG JOB: 04-30-10-042