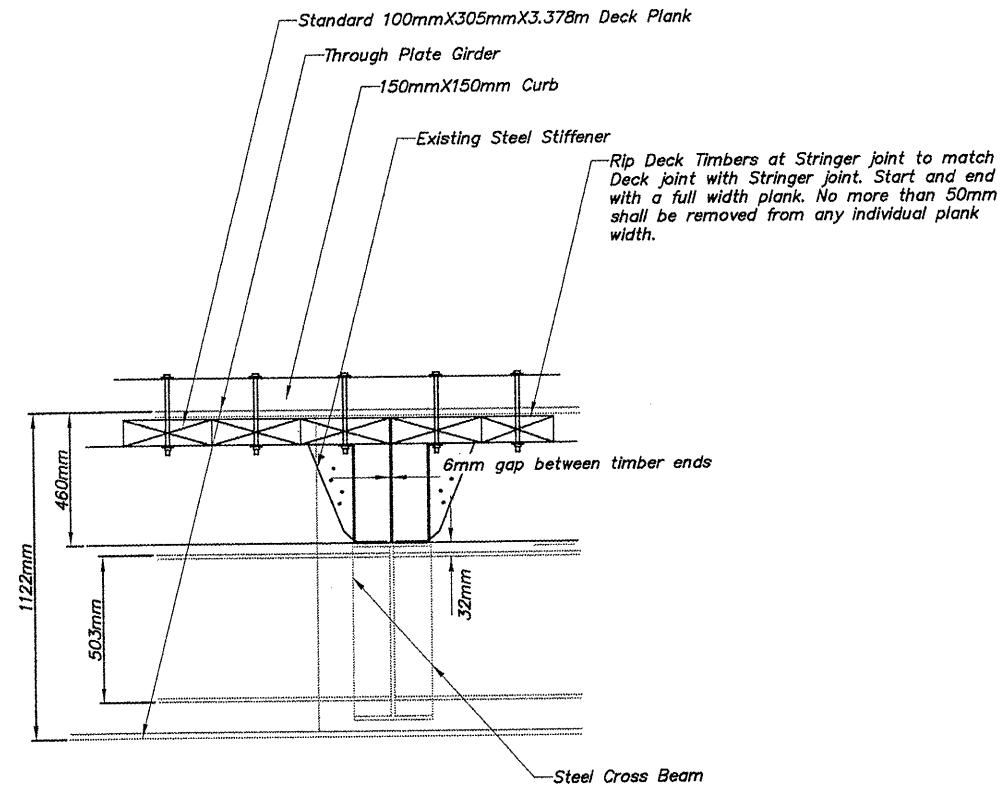
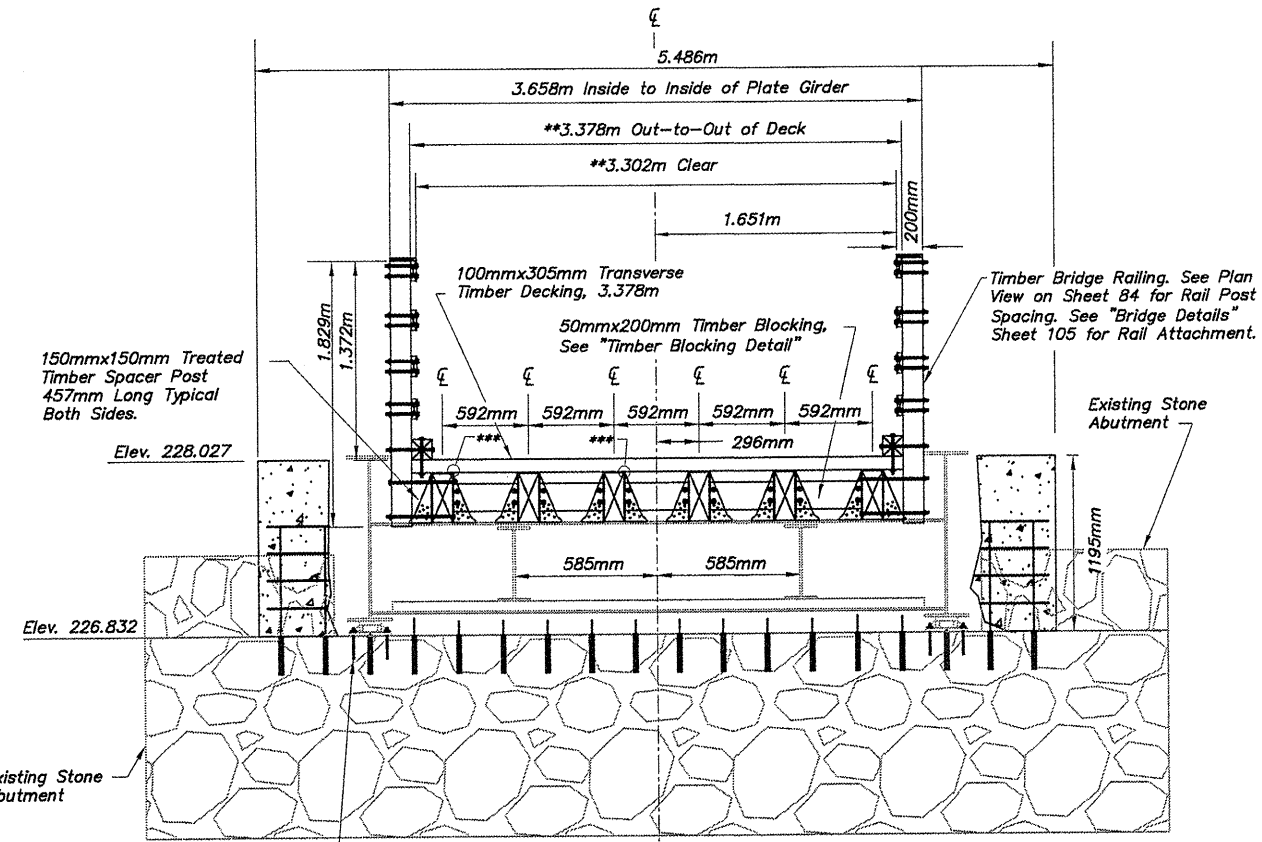


STATE OF ILLINOIS
DEPARTMENT OF TRANSPORTATION

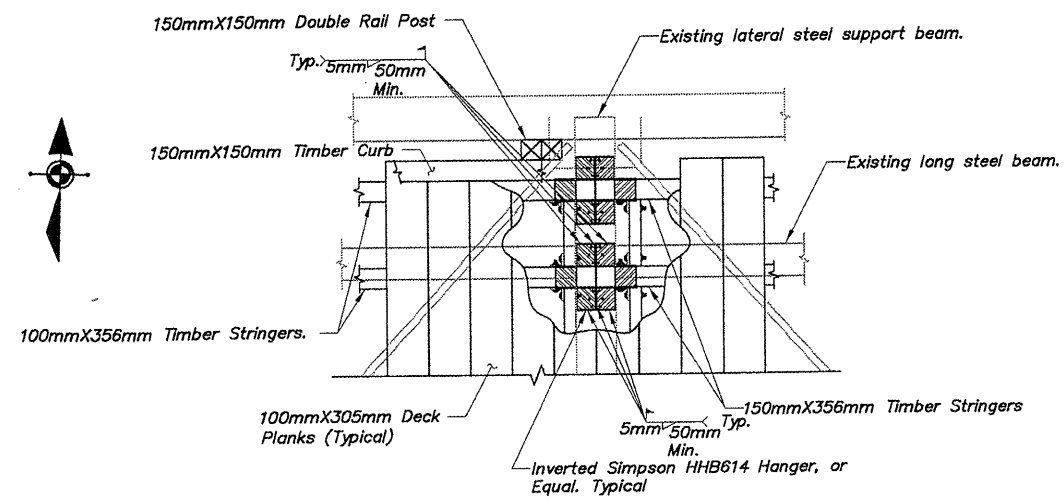


SECTION THRU DECK AT STRINGER JOINT NOT TO SCALE

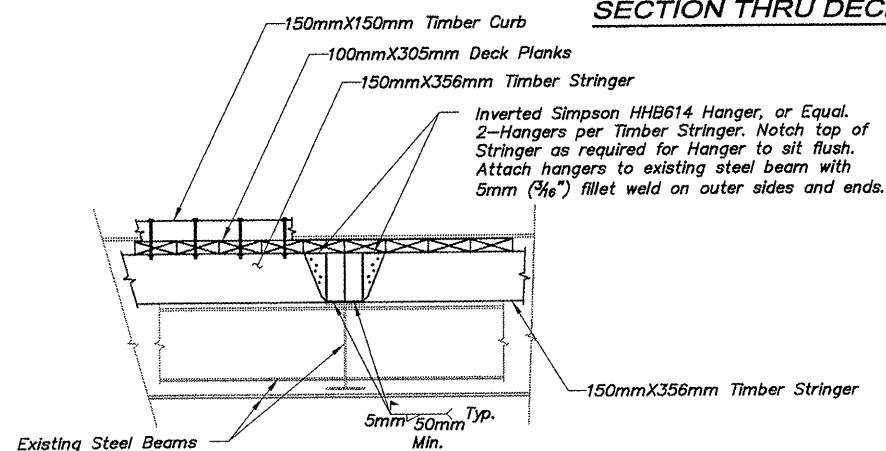


SECTION THRU DECK NOT TO SCALE

** Note: Dimensional lumber may vary in furnished size. Clear width of the deck shall be 3.302m minimum.



PARTIAL PLAN VIEW (at Support Beam)



ELEVATION DETAIL (at Support Beam)

*** Attach Each Transverse Timber Decking to the Center and Outer Treated Timber Stringers. Alternate Sides of Center Stringer. See "Bridge Details" Sheet for Timber Deck Angle Detail on Sheet 105.

Weld Notes:

Welds shall be applied to outer side and along each end of each hanger.

Weld material shall be E-70xx.

Fillet welds shall be 5mm (3/16") X 50mm (2") Minimum.

Existing steel surfaces shall be properly prepared and all welding shall be in accordance with A.W.S. Standards.

BRIDGE DETAILS
BRIDGE 121
OVER THE SUMNER CREEK
WINNEBAGO COUNTY
SECTION NO. 94-00267-00-BT
STATION 28+215.43

SHEET 3 OF 4

SHEET REVIEW		REVISIONS		SCALE: N/A	<p>7282 Argus Drive Rockford, Illinois 61107-6837 (815) 398-2332 FAX (815) 398-2496 Design Firm License: Illinois 184-000816 Copyright 2011 By McClure Engineering Associates, Inc.</p>	BRIDGE NO. 121 DETAILS 2		SHEET NO. 86 OF 107
AGENCY	DATE	NO.	ITEM	DATE		DRAWN BY: REK CHECKED BY: JWH DATE: DECEMBER 12, 2011	PECATONICA PRAIRIE PATH WINNEBAGO COUNTY HIGHWAY DEPARTMENT SECTION 94-00267-00-BT FILE:H:\10-042 WINN CO PEC PATH\DESIGN\DRAWINGS\BRIDGES\10-042 B121.DWG JOB:04-30-10-042	