

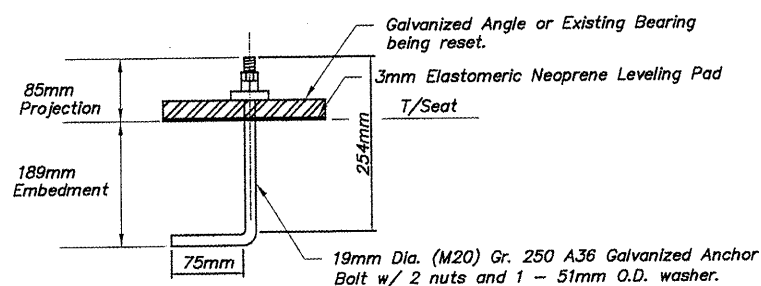
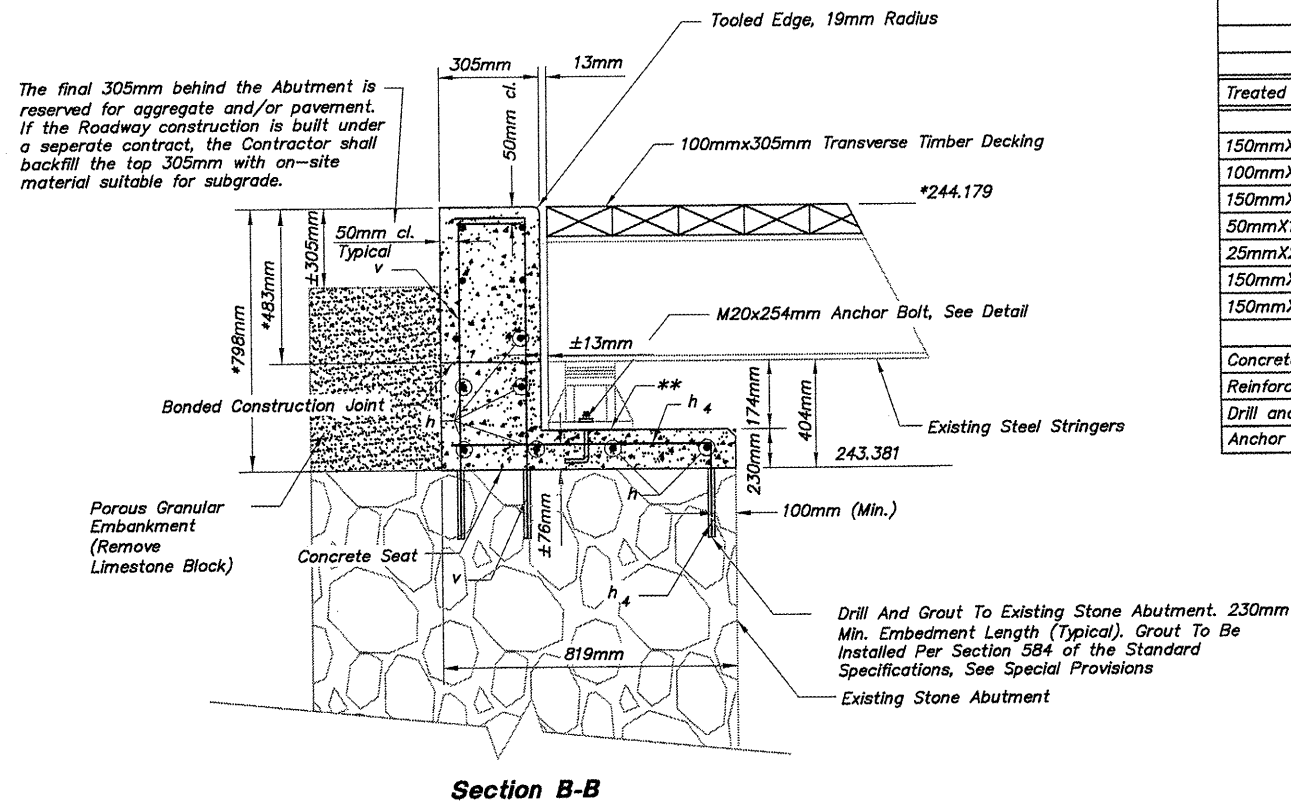
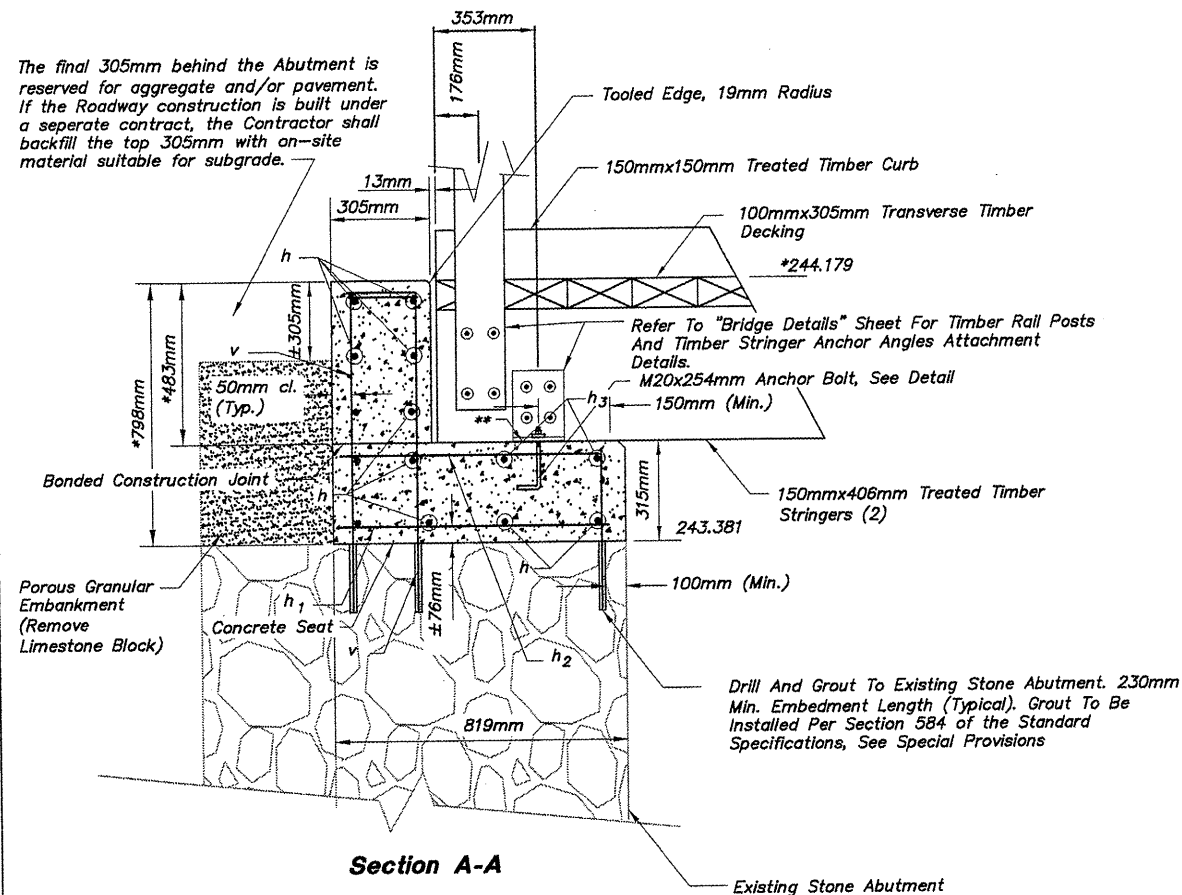
STATE OF ILLINOIS
DEPARTMENT OF TRANSPORTATION

BILL OF MATERIAL

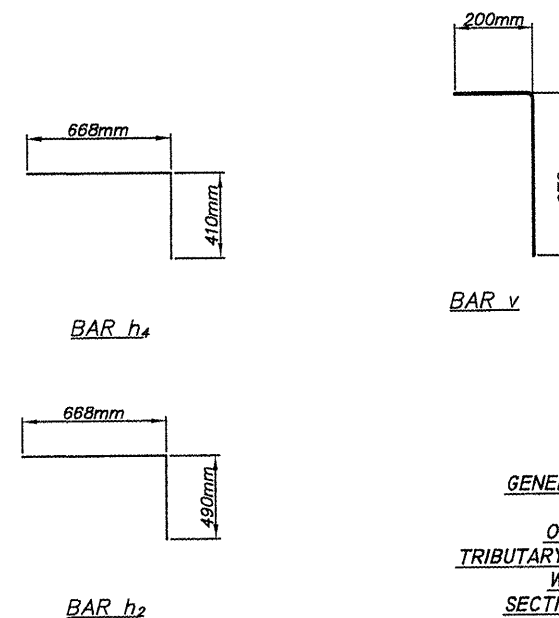
For Both Abutments

Bar	No.	Size	Length	Shape
h	24	#16	5.300m	—
h1	20	#13	0.675m	—
h2	20	#13	1.158m	—
h3	8	#13	1.170m	—
h4	18	#13	1.078m	—
v	76	#13	1.170m	—

Treated Timber Size	No.	Cu. M.
150mmX406mmX2.464m	2	0.301
100mmX305mmX3.700m	9	1.016
150mmX150mmX2.464m	2	0.111
50mmX150mmX3.658m	8	0.219
25mmX200mmX3.658m	2	0.037
150mmX150mmX0.406m	6	0.055
150mmX150mmX1.843m	6	0.249
Concrete Structures	Cu. M.	4.13
Reinforcement Bars	Kg	352
Drill and Grout Bars	Each	114
Anchor Bolts M20	Each	12



ANCHOR BOLT DETAIL



CONCRETE SEAT DETAILS NOT TO SCALE

* The Concrete Abutment Backwall Above The Existing Stone Abutment Shall Be Cast After The Timber And Steel Stringers Have Been Set In-Place. Field Verify Dimension To Match Top Of Timber Deck.

** Provide 3mm Elastomeric Neoprene Leveling Pad According To The Material Properties Of Art. 1052.02 Of The IDOT Standard Specifications (Typ.). This Item Of Work Shall Not Be Paid For Separately But Shall Be Included With The Cost Of Concrete Structures.

GENERAL PLAN & ELEVATION
BRIDGE 125
OVER A MINOR DITCH
TRIBUTARY TO THE PECATONICA RIVER
WINNEBAGO COUNTY
SECTION NO. 94-00267-00-BT
STATION 34+560.26
SHEET 3 OF 3