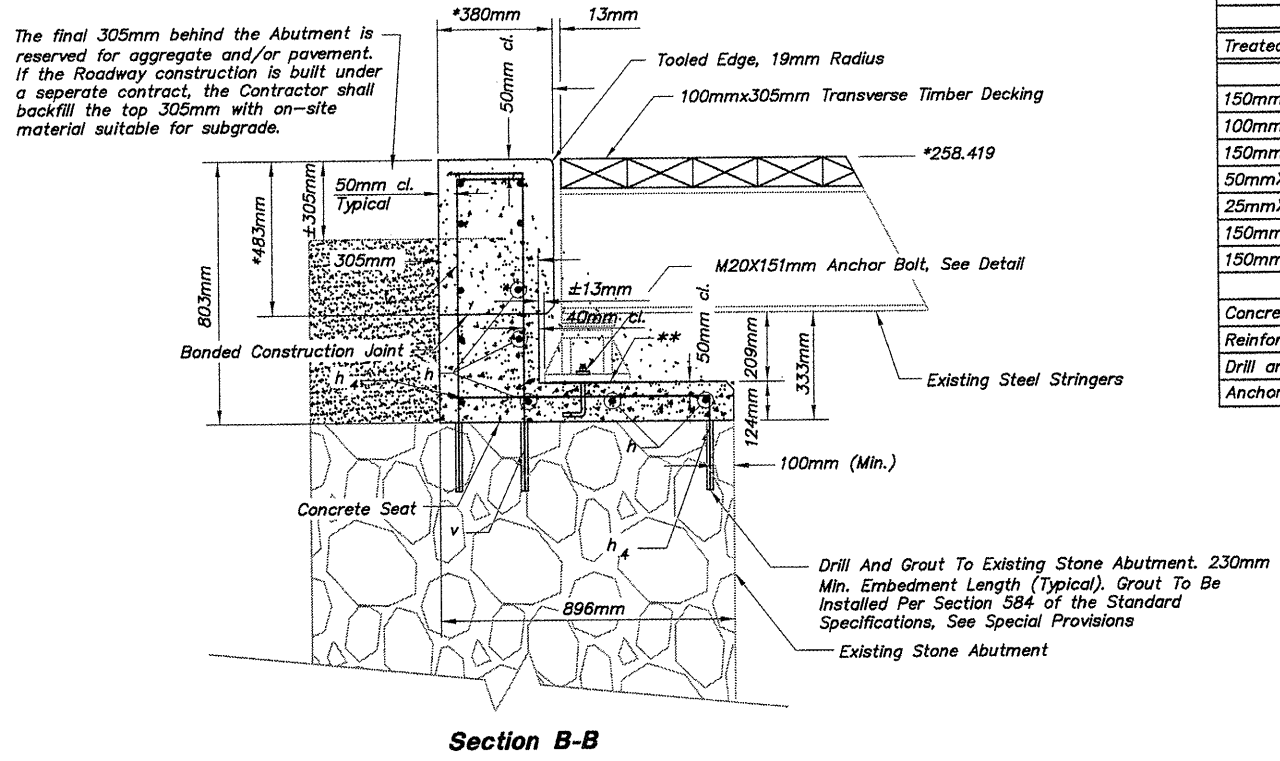
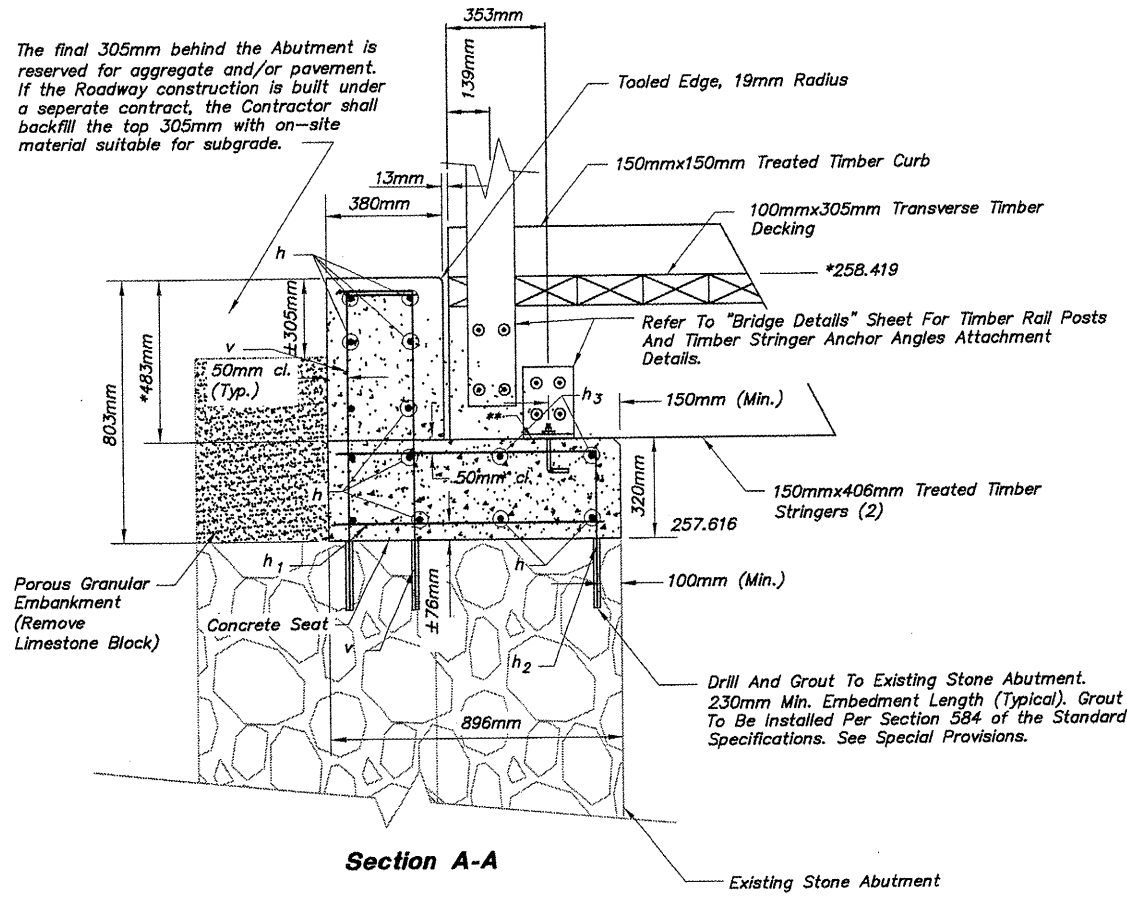


STATE OF ILLINOIS  
DEPARTMENT OF TRANSPORTATION



**BILL OF MATERIAL**

For Both Abutments

Bar	No.	Size	Length	Shape
h	24	#16	4.770m	—
h1	16	#13	0.740m	—
h2	16	#13	1.240m	┌
h3	8	#13	0.910m	—
h4	18	#13	1.040m	┌
v	68	#13	1.180m	—

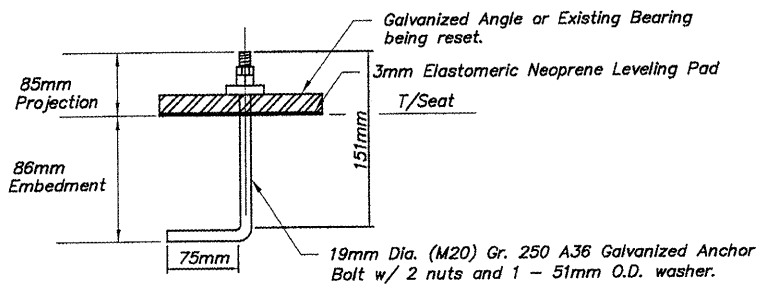
Treated Timber Size	No.	Cu. M.
150mmx406mmx3.44m	2	0.419
100mmx305mmx3.56m	12	1.277
150mmx150mmx3.44m	2	0.155
50mmx150mmx4.267m	8	0.256
25mmx200mmx4.267m	2	0.043
150mmx150mmx0.406m	6	0.055
150mmx150mmx1.843m	6	0.249

Concrete Structures	Cu. M.	3.83
Reinforcement Bars	Kg	316
Drill and Grout Bars	Each	102
Anchor Bolts M20	Each	12

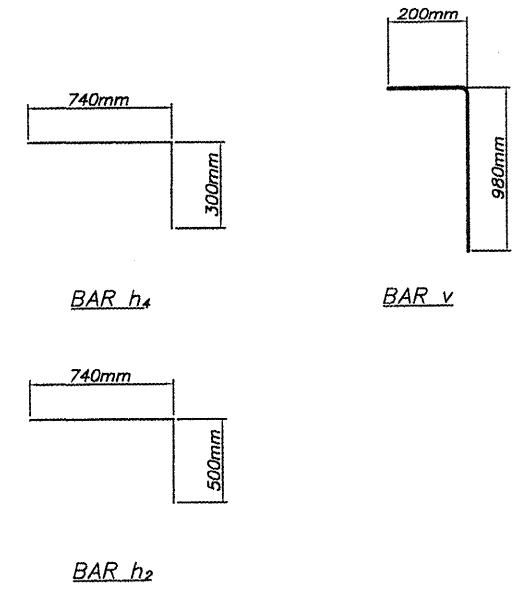
\* The Concrete Abutment Backwall Above The Existing Stone Abutment Shall Be Cast After The Timber And Steel Stringers Have Been Set In-Place. Field Verify Dimension To Match Top Of Timber Deck.

\*\* Provide 3mm Elastomeric Neoprene Leveling Pad According To The Material Properties Of Art. 1052.02 Of The IDOT Standard Specifications (Typ.). This Item Of Work Shall Not Be Paid For Separately But Shall Be Included With The Cost Of Concrete Structures.



ANCHOR BOLT DETAIL

CONCRETE SEAT DETAILS NOT TO SCALE



BRIDGE DETAILS  
BRIDGE 129  
OVER A TRIBUTARY TO THE  
COOLIDGE CREEK  
WINNEBAGO COUNTY  
SECTION NO. 94-00267-00-BT  
STATION 40+864.19

SHEET 3 OF 3