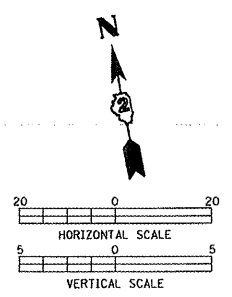
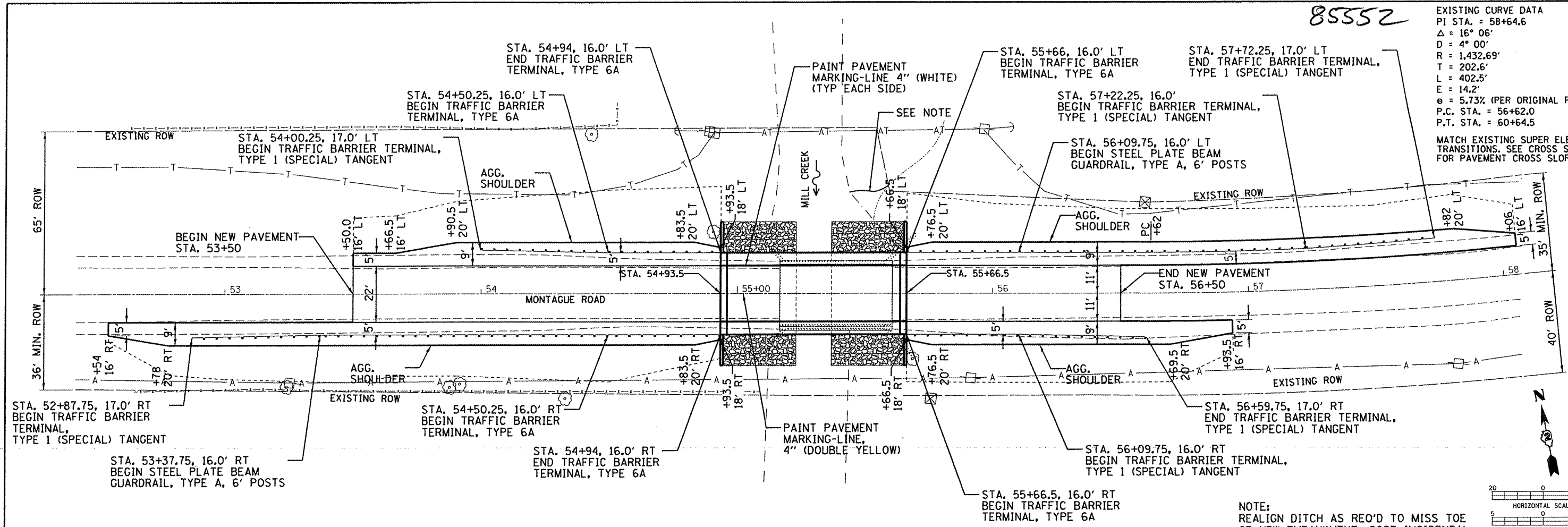




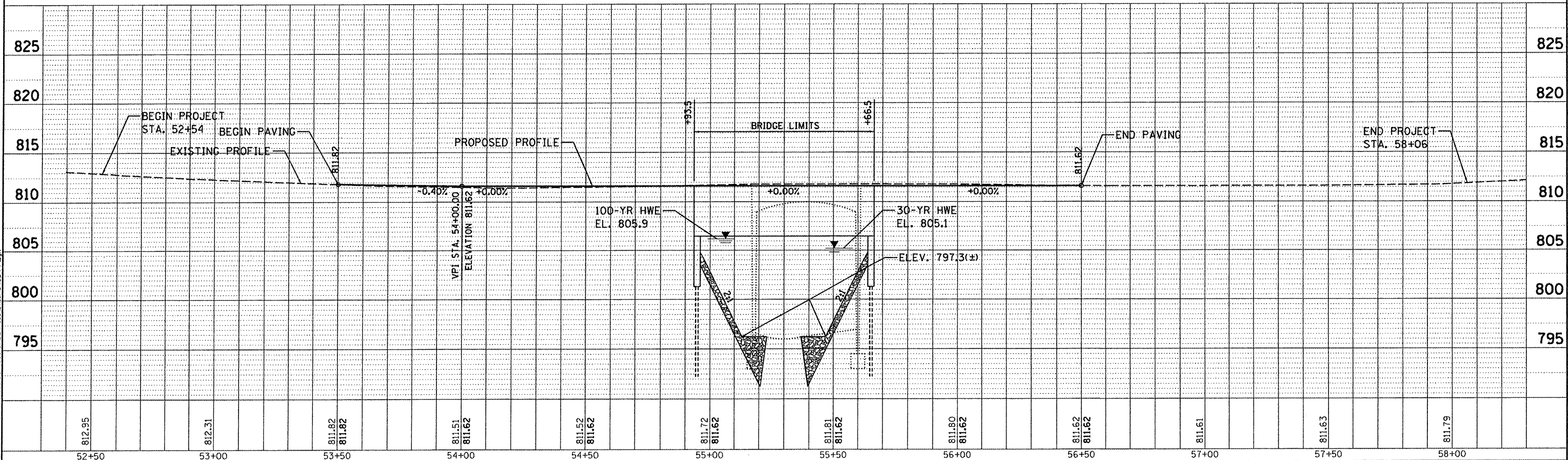
85552

EXISTING CURVE DATA
 PI STA. = 58+64.6
 $\Delta = 16^\circ 06'$
 $D = 4^\circ 00'$
 $R = 1,432.69'$
 $T = 202.6'$
 $L = 402.5'$
 $E = 14.2'$
 $e = 5.73\%$ (PER ORIGINAL PLANS)
 P.C. STA. = 56+62.0
 P.T. STA. = 60+64.5

MATCH EXISTING SUPER ELEVATION TRANSITIONS. SEE CROSS SECTIONS FOR PAVEMENT CROSS SLOPES.



NOTE: REALIGN DITCH AS REQ'D TO MISS TOE OF NEW EMBANKMENT. COST INCIDENTAL TO VARIOUS EARTHWORK PAY ITEMS.



LAYOUT: 05/02/11, mcd000377
 DRAWN: 12/16/11, JDM
 CHECKED: 12/16/11, SMK
 FILE NAME: I:\R31\08\1831808\CA00\Road\Sheet\105-PP.dgn

FILE NAME =	USER NAME = JDM	DESIGNED SMK	REVISED -	STATE OF ILLINOIS DEPARTMENT OF TRANSPORTATION	ROADWAY PLAN AND PROFILE MONTAGUE ROAD BRIDGE REPLACEMENT WINNEBAGO COUNTY, ILLINOIS	F.A.S. RTE. 0052	SECTION 03-00324-00-BR	COUNTY WINNEBAGO	TOTAL SHEETS 24	SHEET NO. 5
PLOT SCALE = AS SHOWN	CHECKED SMK	REVISED -	SHEET NO. OF SHEETS STA. TO STA.			CONTRACT NO. 85552				
PLOT DATE = 12/14/2011	DATE 12/16/11	REVISED -	FED. ROAD DIST. NO. ILLINOIS FED. AID PROJECT							