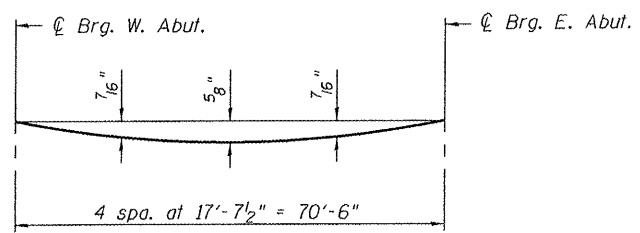
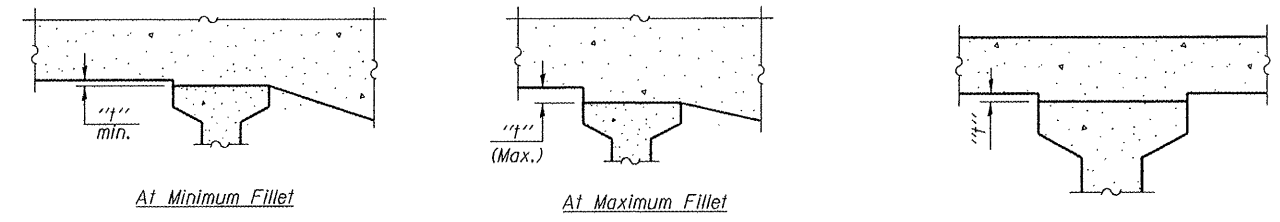


85552



DEAD LOAD DEFLECTION DIAGRAM
(Includes weight of concrete deck only.)

Note:
The above deflections are not to be used in the field if the engineer is working from the grade elevations adjusted for dead load deflections as shown below.



EXTERIOR BEAMS **INTERIOR BEAMS**

FILLET HEIGHTS

To determine "f": After all precast prestressed beams have been erected, elevations of the top flanges of the beams shall be taken at intervals shown below. These elevations subtracted from the "Theoretical Grade Elevations Adjusted for Dead Load Deflections" shown below, minus slab thickness, equals the fillet heights "f" above top flanges of beams.

BEAM 1

Location	Station	Offset	Theoretical Grade Elevations	Theoretical Grade Elevations Adjusted For Dead Load Deflection
Bk. W. Abut.	54+93.50	-14.00	811.340	811.340
CL Brg. W. Abut.	54+94.75	-14.00	811.340	811.340
A	55+04.75	-14.00	811.340	811.362
B	55+14.75	-14.00	811.340	811.379
C	55+24.75	-14.00	811.340	811.388
D	55+34.75	-14.00	811.340	811.388
E	55+44.75	-14.00	811.340	811.379
F	55+54.75	-14.00	811.340	811.363
CL Brg. E. Abut.	55+65.25	-14.00	811.340	811.340
Bk. E. Abut.	55+66.50	-14.00	811.340	811.340

BEAM 2

Location	Station	Offset	Theoretical Grade Elevations	Theoretical Grade Elevations Adjusted For Dead Load Deflection
Bk. W. Abut.	54+93.50	-7.0	811.480	811.480
CL Brg. W. Abut.	54+94.75	-7.0	811.480	811.480
A	55+04.75	-7.0	811.480	811.503
B	55+14.75	-7.0	811.480	811.521
C	55+24.75	-7.0	811.480	811.531
D	55+34.75	-7.0	811.480	811.531
E	55+44.75	-7.0	811.480	811.521
F	55+54.75	-7.0	811.480	811.504
CL Brg. E. Abut.	55+65.25	-7.0	811.480	811.480
Bk. E. Abut.	55+66.50	-7.0	811.480	811.480

BEAM 3 & PGL

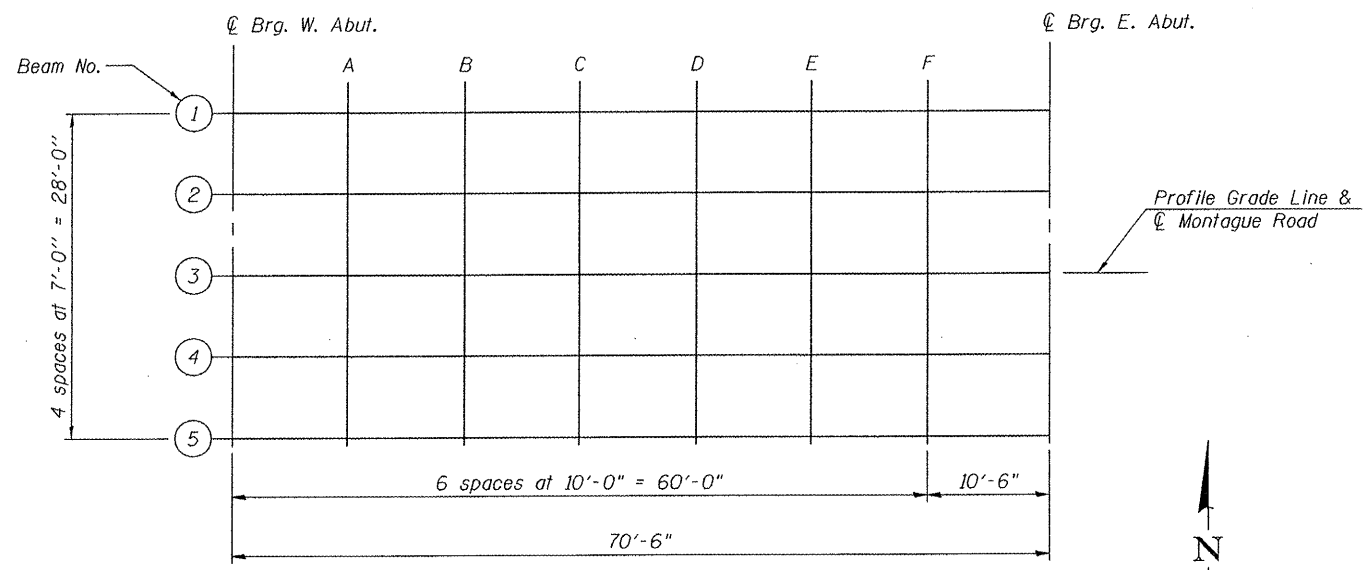
Location	Station	Offset	Theoretical Grade Elevations	Theoretical Grade Elevations Adjusted For Dead Load Deflection
Bk. W. Abut.	54+93.50	0.00	811.620	811.620
CL Brg. W. Abut.	54+94.75	0.00	811.620	811.620
A	55+04.75	0.00	811.620	811.643
B	55+14.75	0.00	811.620	811.661
C	55+24.75	0.00	811.620	811.671
D	55+34.75	0.00	811.620	811.671
E	55+44.75	0.00	811.620	811.661
F	55+54.75	0.00	811.620	811.644
CL Brg. E. Abut.	55+65.25	0.00	811.620	811.620
Bk. E. Abut.	55+66.50	0.00	811.620	811.620

BEAM 4

Location	Station	Offset	Theoretical Grade Elevations	Theoretical Grade Elevations Adjusted For Dead Load Deflection
Bk. W. Abut.	54+93.50	7.00	811.480	811.480
CL Brg. W. Abut.	54+94.75	7.00	811.480	811.480
A	55+04.75	7.00	811.480	811.503
B	55+14.75	7.00	811.480	811.521
C	55+24.75	7.00	811.480	811.531
D	55+34.75	7.00	811.480	811.531
E	55+44.75	7.00	811.480	811.521
F	55+54.75	7.00	811.480	811.504
CL Brg. E. Abut.	55+65.25	7.00	811.480	811.480
Bk. E. Abut.	55+66.50	7.00	811.480	811.480

BEAM 5

Location	Station	Offset	Theoretical Grade Elevations	Theoretical Grade Elevations Adjusted For Dead Load Deflection
Bk. W. Abut.	54+93.50	14.0	811.340	811.340
CL Brg. W. Abut.	54+94.75	14.0	811.340	811.340
A	55+04.75	14.0	811.340	811.362
B	55+14.75	14.0	811.340	811.379
C	55+24.75	14.0	811.340	811.388
D	55+34.75	14.0	811.340	811.388
E	55+44.75	14.0	811.340	811.379
F	55+54.75	14.0	811.340	811.363
CL Brg. E. Abut.	55+65.25	14.0	811.340	811.340
Bk. E. Abut.	55+66.50	14.0	811.340	811.340



DIAGRAMMATIC PLAN - TOP OF CONCRETE ELEVATIONS

TOP OF SLAB ELEVATIONS
STRUCTURE NUMBER 101-3102

12/09/2011
 A:\03\101-3102\CADD\Struct\Sheet\85552-003-01705.dgn
 LAYOUT: SWK 7/25/11
 DRAWN: JDM 12/16/11
 REVIEWED: SWK 12/16/11

PROFESSIONAL DESIGN FIRM LICENSE #184-001084

HANSON Hanson Professional Services Inc.	SHEET NO. 3 13 SHEETS	F.A.S. RTE. 0052	SECTION 03-00324-00-BR	COUNTY Winnebago	TOTAL SHEETS 24	SHEET NO. 11
	DATE 12/16/11	CONTRACT NO. 85552 FED. ROAD DIST. NO. 2 ILLINOIS FED. AID PROJECT				