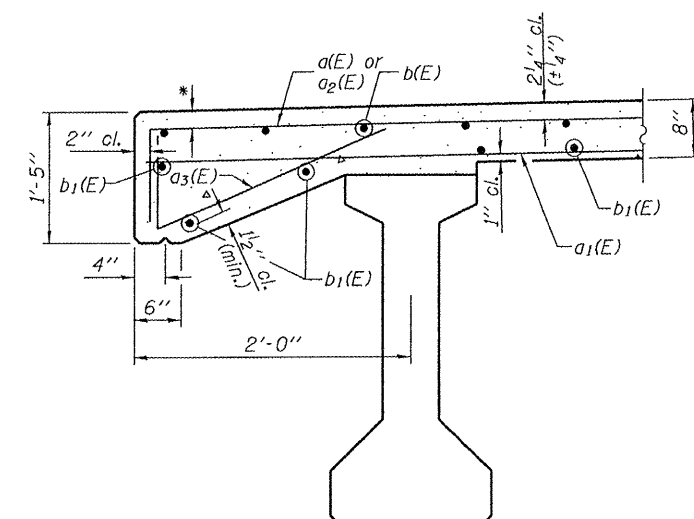
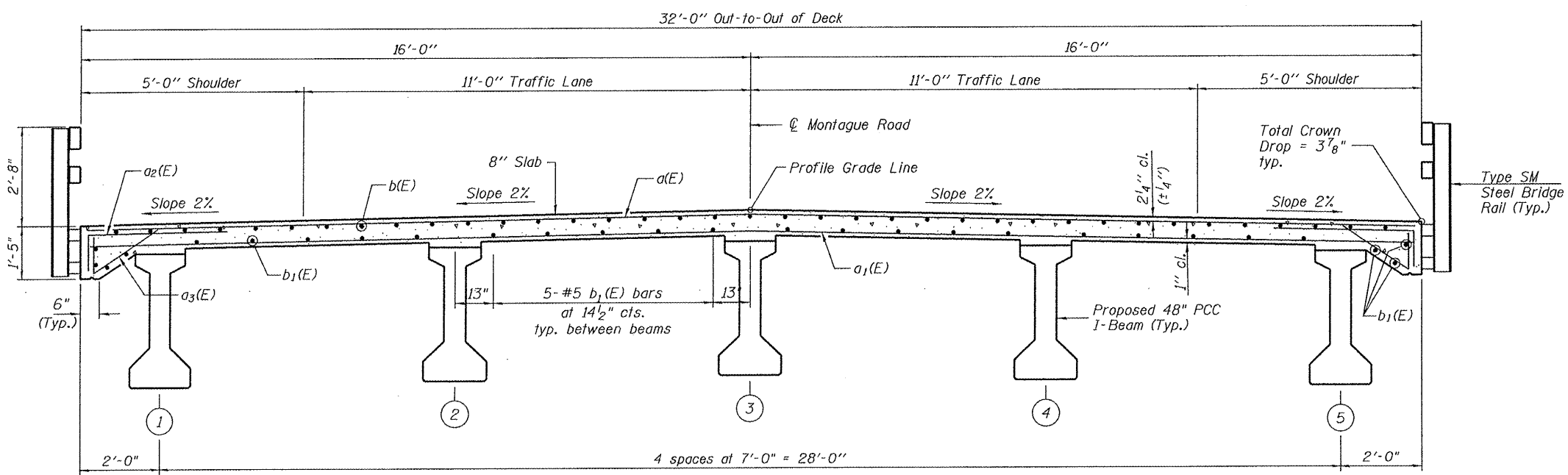


PLAN



SECTION THRU EDGE OF SLAB

* Reinforcement bars in the top deck may be placed with a 1/2 inch minimum clearance in the area of the rail post anchor devices. The studs of the anchor devices shall be placed below the top reinforcement bars and the outermost longitudinal reinforcement bar shall be placed directly above the studs of the rail post anchor device.



CROSS SECTION (Looking East)

SUPERSTRUCTURE
STRUCTURE NUMBER 101-3102

Notes:
See Sheet 5 of 13 for diaphragm details, bar details and Bill of Material.
Bars indicated thus 20 x 3-#5 etc. indicates 20 lines of bars with 3 lengths per line.
For Section A-A, see Sheet 5 of 13.

I:\03\101-3102\101-3102-STRUC\101-3102-STRUC.dgn

LAYOUT	SMK	7/25/11
DRAWN	JDM	12/16/11
REVIEWED	SMK	12/16/11

PROFESSIONAL DESIGN FIRM LICENSE #184-001084

© Copyright Hanson Professional Services Inc. 2011

Hanson Professional Services Inc.

03R1808
DATE 12/16/11

SHEET NO. 4
13 SHEETS

F.A.S. RTE.	SECTION	COUNTY	TOTAL SHEETS	SHEET NO.
0052	03-00324-00-BR	Winnebago	24	12
CONTRACT NO. 85552				
FED. ROAD DIST. NO. 2 ILLINOIS FED. AID PROJECT				