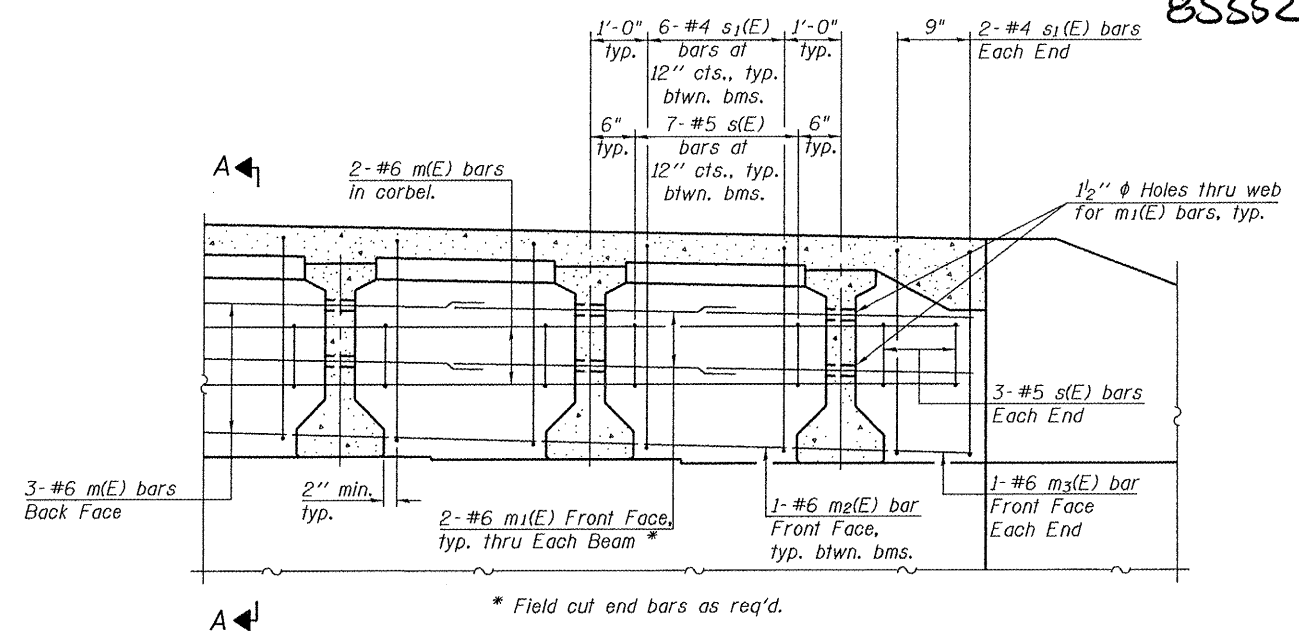


Beam ends shall be set on an initial 1/2" min. grout (2:1 sand and portland cement, very dry mix) to provide full bearing. Any excess grout squeezed out from under the beam shall be removed. Cost included with Concrete Structures.

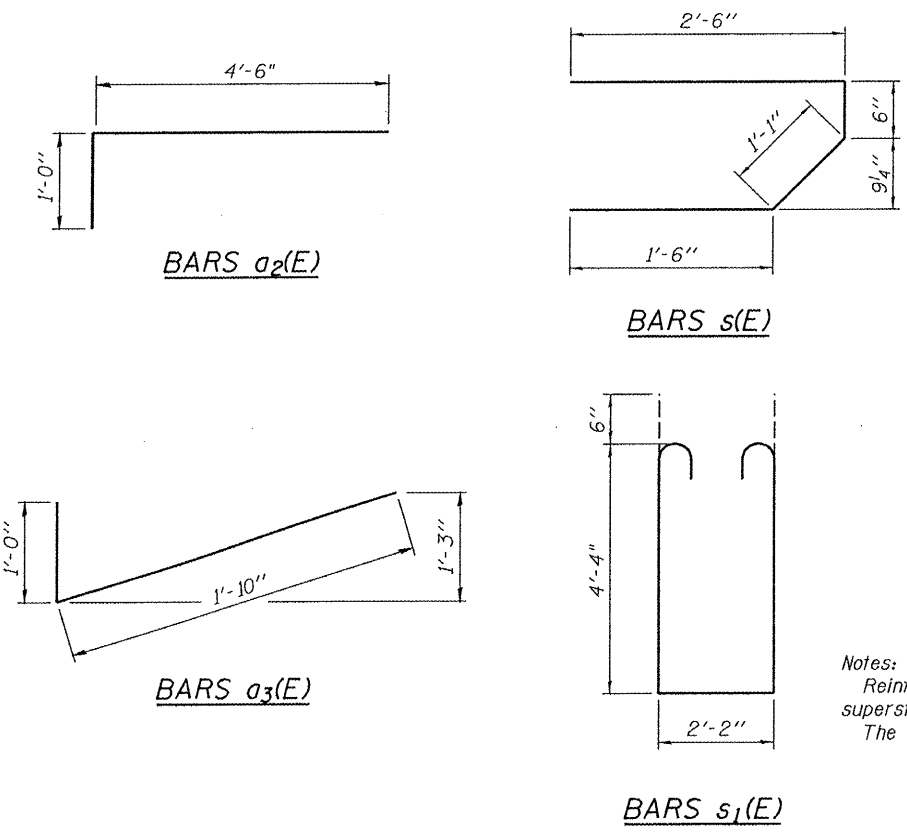
SECTION A-A
Dimensions at right angles to abutment, except as shown.



DIAPHRAGM ELEVATION AT ABUTMENT

BILL OF MATERIAL

Bar	No.	Size	Length	Shape
a(E)	135	#5	31'-8"	—
a1(E)	88	#5	31'-8"	—
a2(E)	268	#6	5'-6"	—
a3(E)	118	#5	2'-10"	┘
b(E)	66	#5	37'-9"	—
b1(E)	78	#5	26'-0"	—
m(E)	10	#6	31'-8"	—
m1(E)	20	#6	10'-4"	—
m2(E)	8	#6	4'-10"	—
m3(E)	4	#6	0'-10"	—
s(E)	68	#5	5'-7"	┘
s1(E)	56	#4	11'-10"	┘
Reinforcement Bars, Epoxy Coated			Pound	16,330
Concrete Superstructure			Cu. Yd.	88.6
Bridge Deck Grooving			Sq. Yds.	243
Protective Coat			Sq. Yds.	260



Notes:
Reinforcement bars and concrete in diaphragms are billed with superstructure on this sheet.
The s(E) and s1(E) bars shall be placed parallel to the beams.

MIN. BAR LAP
#6 bar = 3'-4"
#5 bar = 2'-7"

INTEGRAL ABUTMENT DIAPHRAGM DETAILS
STRUCTURE NUMBER 101-3102

PROFESSIONAL DESIGN FIRM LICENSE #184-001084

© Copyright Hanson Professional Services Inc. 2011

HANSON
Hanson Professional Services Inc.

JOB NO. 03R1808
DATE 12/16/11

SHEET NO. 5
13 SHEETS

F.A.S. RTE. 0052	SECTION 03-00324-00-BR	COUNTY Winnebago	TOTAL SHEETS 24	SHEET NO. 13
CONTRACT NO. 85552				
FED. ROAD DIST. NO. 2 ILLINOIS FED. AID PROJECT				

12/08/2011
 I:\03\jobs\03R1808\CADD\Struct\Sheet\5-005-03-diaphragm.dgn
 LAYOUT SWK 7/25/11
 DRAWN JDM 12/16/11
 REVIEWED SWK 12/16/11