

F.A.S. RTE.	SECTION	COUNTY	TOTAL SHEETS	SHEET NO.
258	11-00325-00-SP	LA SALLE	84	1
CONTRACT NO. 87479				
FED. ROAD DIST. NO.		ILLINOIS FED. AID PROJECT		

INDEX OF SHEETS

- 1 COVER SHEET
- 2 LIST OF STANDARDS, GENERAL NOTES AND LEGEND
- 3-4 SUMMARY OF QUANTITIES
- 5-12 TYPICAL SECTIONS
- 13 SUPERELEVATION TABLES & DETAILS
- 14-16 SCHEDULES OF QUANTITIES
- 17 TIE POINTS & BENCHMARKS
- 18-33 STAGE CONSTRUCTION PLANS
- 34-37 PLAN & PROFILES
- 38-39 RIGHT OF WAY PLATS
- 40 INTERSECTION DETAIL
- 41-42 PAVEMENT MARKING & SIGNING PLANS
- 43-44 EROSION CONTROL PLANS
- 45-46 FLASHING BEACON PLANS
- 47-49 ENTRANCE AND SPECIAL DETAILS
- 50-84 CROSS SECTIONS

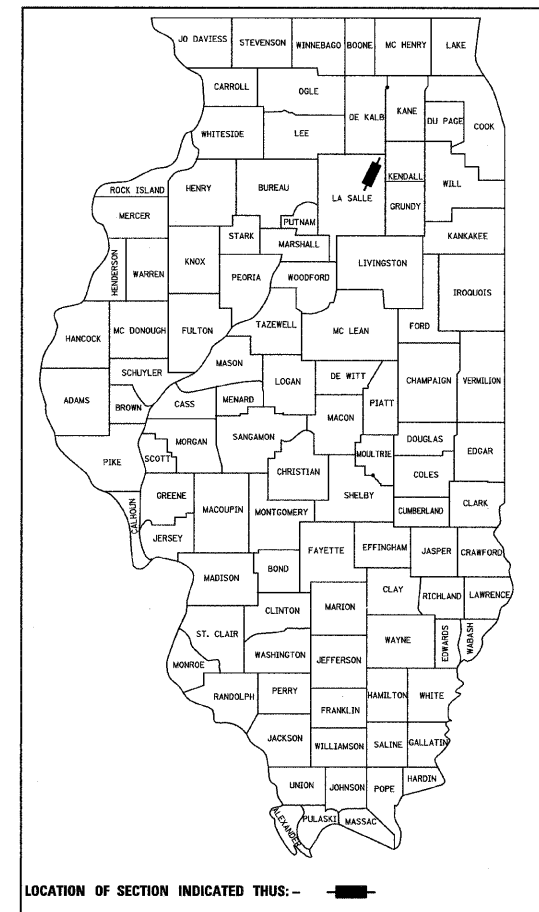
STATE OF ILLINOIS
DEPARTMENT OF TRANSPORTATION
DIVISION OF HIGHWAYS
PLANS FOR PROPOSED
FEDERAL AID HIGHWAY

F.A.S. RTE. 258 (C.H. 2)
SECTION 11-00325-00-SP
PROJECT HRR-0258(104)
LA SALLE COUNTY

C-93-001-11

INTERSECTION RECONSTRUCTION

SERENA TOWNSHIP
T. 35 N. R. 4 E.



LOCATION OF SECTION INDICATED THUS: - [arrow symbol]

ELECTRIC

AMERENIP
MR. FRANK HEISER
340 RACCUGLIA DR.
LaSALLE, IL. 61301
(815) 224-6275

GAS

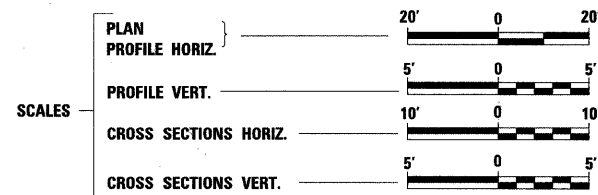
NICOR
MS. DORIS LEWIS
1629 N. CHAMPLAIN ST.
OTTAWA, IL. 61350
(815) 433-3850, EXT. 244

TELEPHONE

AT&T
MR. KEITH HIEMLIECH
65 W. WEBSTER ST. - 4TH FLOOR
JOLIET, IL. 60432
(815) 774-6762

CABLE T.V.

MEDIACOM
MR. MATT FORGAS
808 E. NORTH ST.
ELBURN, IL. 60119
(815) 716-0582



FULL SIZE PLANS HAVE BEEN PREPARED USING STANDARD ENGINEERING SCALES. REDUCED SIZED PLANS WILL NOT CONFORM TO STANDARD SCALES. IN MAKING MEASUREMENTS ON REDUCED PLANS, THE ABOVE SCALES MAY BE USED.

J.U.L.I.E.
JOINT UTILITY LOCATION INFORMATION FOR EXCAVATION
1-800-892-0123

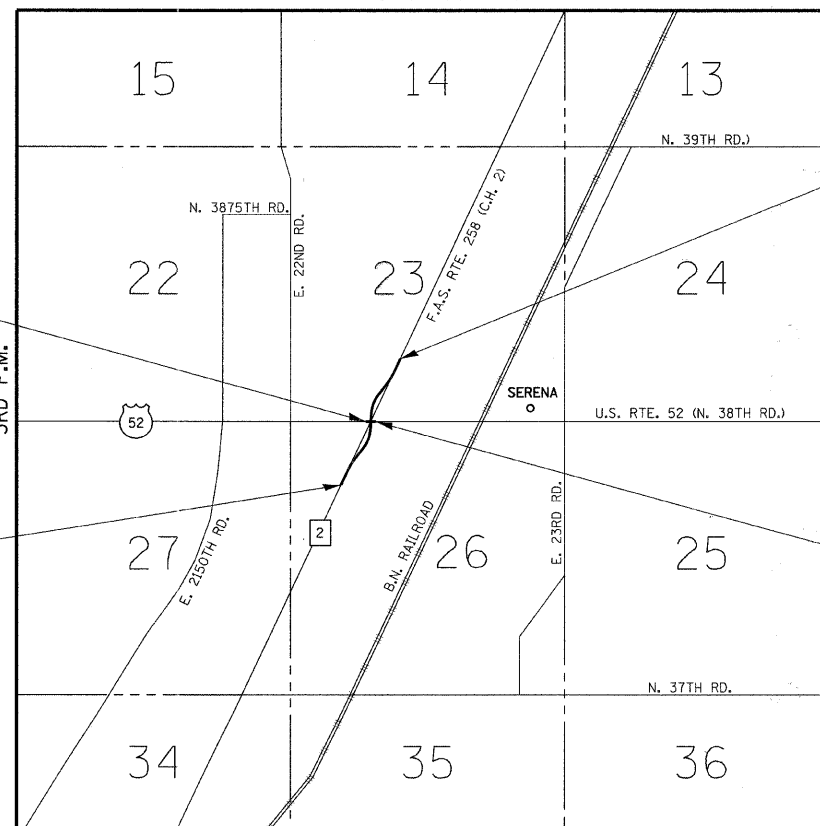
DISTRICT 3 NO. (815) 434-6131

PROJECT ENGINEER: CRAIG YOUNG
PROJECT MANAGER: GREGG MOUNTS

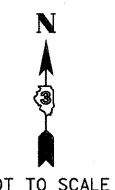
CONTRACT NO. 87479

U.S. RTE. 52 (N. 38TH RD.)
IMPROVEMENT BEGINS
STA. 97+50.00

SECTION 11-00325-00-SP
F.A.S. RTE. 258 (C.H. 2)
IMPROVEMENT BEGINS
STA. 36+78.29



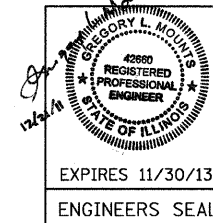
SECTION 11-00325-00-SP
F.A.S. RTE. 258 (C.H. 2)
IMPROVEMENT ENDS
STA. 63+55.65



U.S. RTE. 52 (N. 38TH RD.)
IMPROVEMENT ENDS
STA. 102+50.00

F.A.S. RTE. 258 (C.H. 2) GROSS LENGTH OF SECTION = 2677.36 LINEAL FEET = 0.51 MILES
NET LENGTH OF SECTION = 2677.36 LINEAL FEET = 0.51 MILES
U.S. RTE. 52 (N. 38TH RD.) GROSS LENGTH OF SECTION = 500.00 LINEAL FEET = 0.09 MILES
NET LENGTH OF SECTION = 500.00 LINEAL FEET = 0.09 MILES

Hutchinson Engineering, Inc.
Jacksonville - Since 1945 - Shorewood
2011 JOB #2844



TRAFFIC DATA
F.A.S. RTE. 258 (C.H. 2) SOUTH OF U.S. RTE. 52: ADT = 2,450 (2031)
F.A.S. RTE. 258 (C.H. 2) NORTH OF U.S. RTE. 52: ADT = 3,590 (2031)

DESIGN DESIGNATION
F.A.S. RTE. 258 (C.H. 2), 359 (31) RURAL COLLECTOR 0.77 (FD-20)
DESIGN POLICY: RECONSTRUCTION
DESIGN SPEED: 60 M.P.H.

STATE OF ILLINOIS
DEPARTMENT OF TRANSPORTATION
DIVISION OF HIGHWAYS

SUBMITTED 12/29 20 11

James A. Keiser COUNTY ENGINEER

12-30-2011

Gregory L. Mounts PROJECT IMPLEMENTATION ENGINEER

12-30-2011

APPROVAL *Gregory L. Mounts* REGION 2 ENGINEER

PRINTED BY THE AUTHORITY
OF THE STATE OF ILLINOIS

FILE NAME: V:\258\11-00325-00-SP.dgn
USER NAME: hmc
PLOT DATE: 12/27/2011