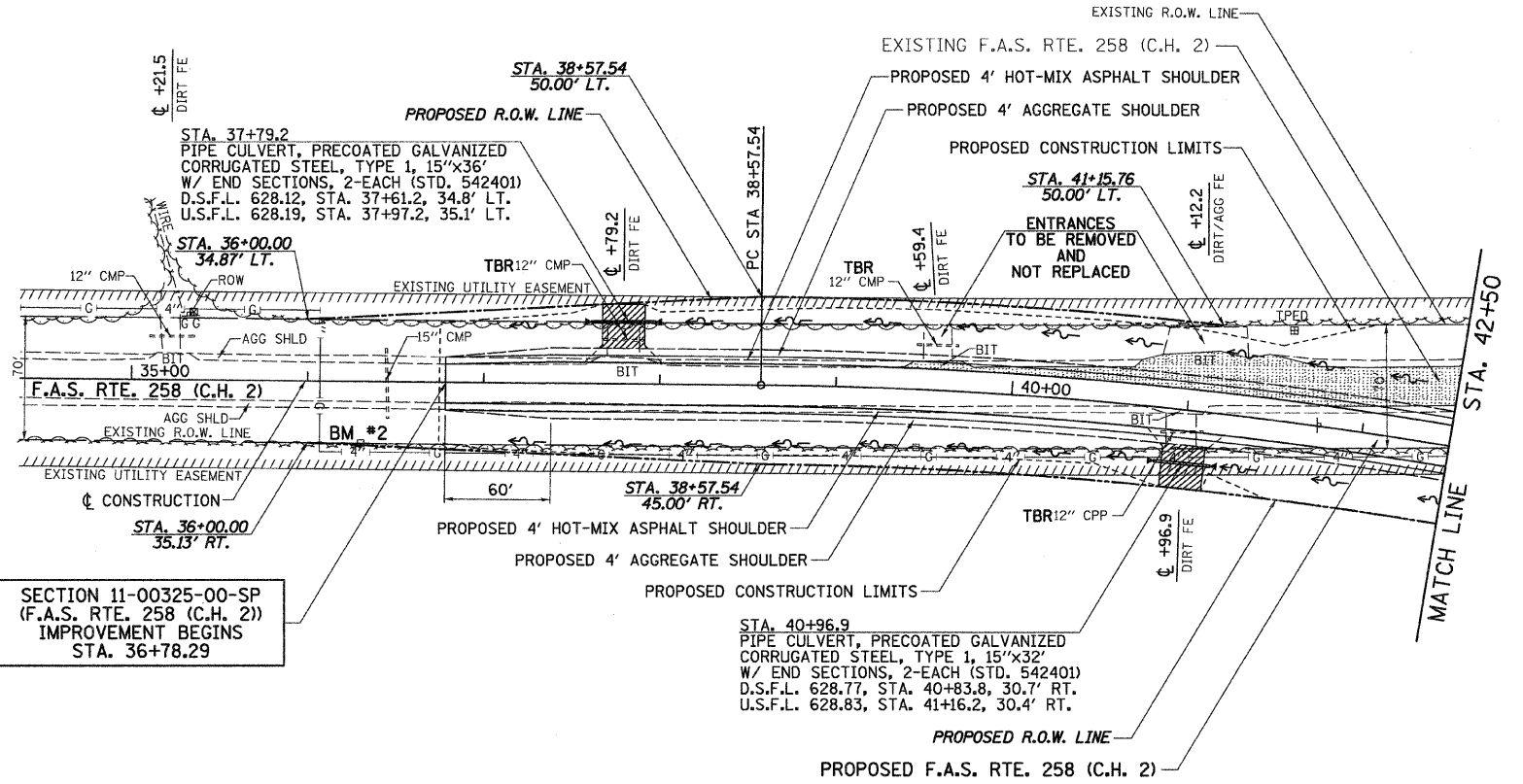


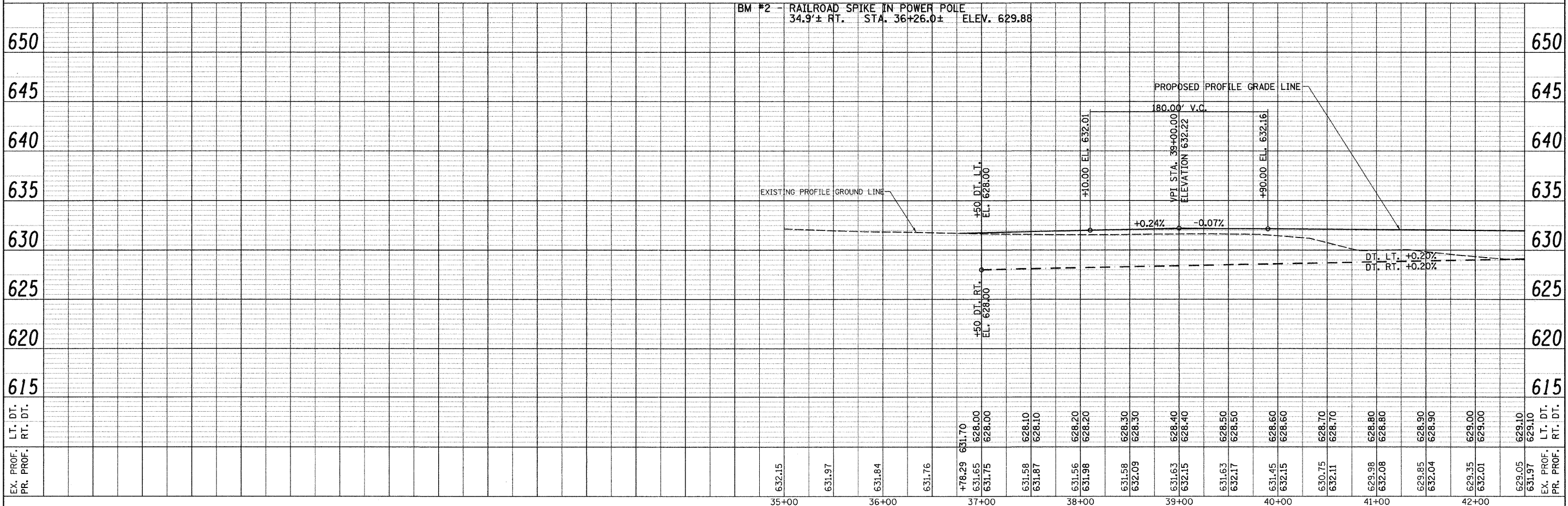
PLAN	SURVEYED	DATE
	PLOTTED	BY
	CHECKED	
	RT. OF WAY CHECKED	
	CADD FILE NAME	
	NO.	



PROP. CURVE CH2.1
 PI STA. = 40+84.77
 $\Delta = 10^\circ 14' 01''$ (RT)
 $D = 2^\circ 15' 28''$
 $R = 2,537.67'$
 $T = 227.23'$
 $L = 453.26'$
 $E = 10.15'$
 $e = 5.0\%$
 $T.R. = 37.00'$
 $S.E. RUN = 122.00'$
 $P.C. STA. = 38+57.54$
 $P.T. STA. = 43+10.80$

SECTION 11-00325-00-SP
 (F.A.S. RTE. 258 (C.H. 2))
 IMPROVEMENT BEGINS
 STA. 36+78.29

PROFILE	SURVEYED	DATE
	PLOTTED	BY
	CHECKED	
	RT. OF WAY CHECKED	
	STRUCTURE NOTATIONS CHECKED	
	NO.	



FILE NAME = v:\2844\2844p001.dgn	USER NAME = bdeoraene	DESIGNED -	REVISED -	STATE OF ILLINOIS DEPARTMENT OF TRANSPORTATION	F.A.S. RTE. 258 (C.H. 2) PLAN & PROFILE	F.A.S. RTE. 258	SECTION 11-00325-00-SP	COUNTY LA SALLE	TOTAL SHEETS 84	SHEET NO. 34	
PLOT SCALE = 50.0000' / IN.	CHECKED -	REVISED -	SCALE: H=50 V=5			SHEET NO. 1 OF 3 SHEETS	STA. 34+32.23 TO STA. 42+50	CONTRACT NO. 87479		ILLINOIS FED. AID PROJECT	
PLOT DATE = 12/22/2011	DATE -	REVISED -									