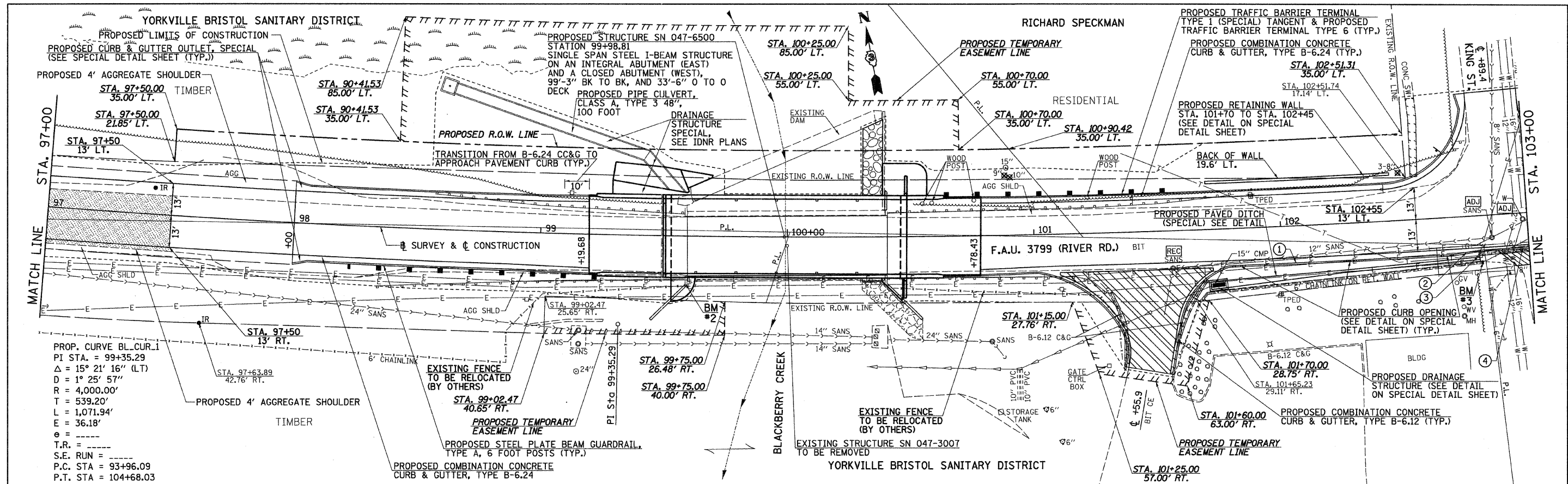
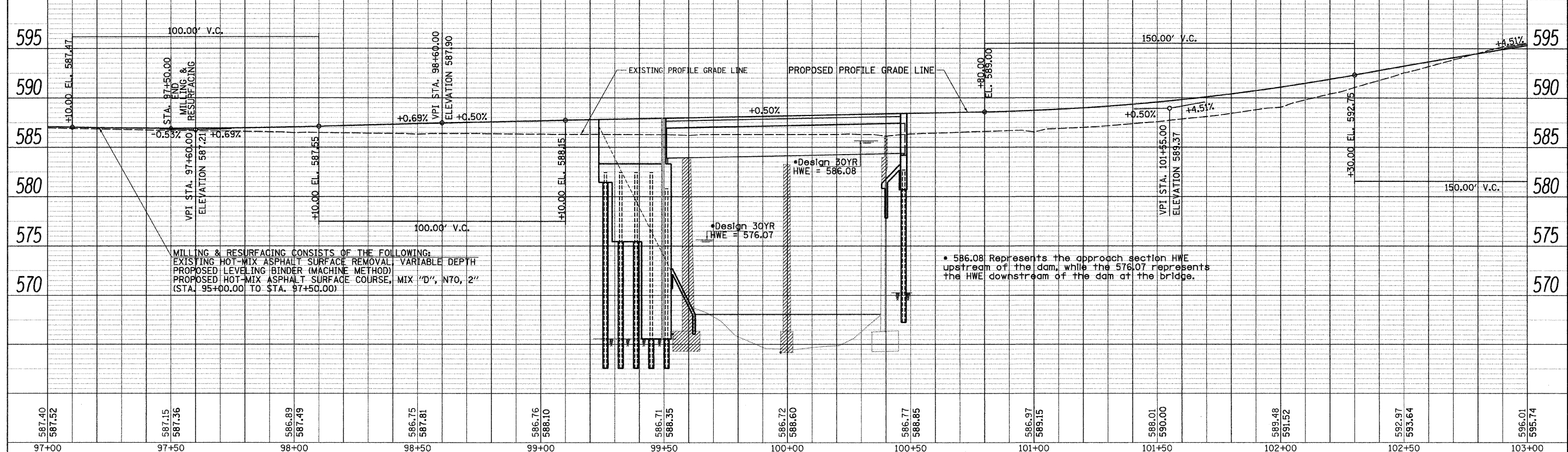


PLAN	SURVEYED	DATE
	PLOTTED	BY
	REVISIONS	
	RT. OF WAY CHECKED	
	NO.	
	DATE	
	FILE NAME	

PROFILE	SURVEYED	DATE
	PLOTTED	BY
	REVISIONS	
	GRADE CHECKED	
	NO.	
	DATE	
	STRUCTURE NOTATION CHFD	



- BM #2 - CHISELED "□" ON HEADWALL @ SOUTHWEST CORNER OF BRIDGE OVER BLACKBERRY CREEK. STA. 99+58.9± ELEV. 587.24
- BM #3 - CHISELED "□" ON NORTHEAST CORNER OF CONCRETE RETAINING WALL ON SOUTH SIDE OF ROAD ACROSS FROM F.A.U. 3799 (RIVER RD.) AND KING ST. INTERSECTION. STA. 102+78.6± ELEV. 596.00
- ① PROPOSED COMBINATION CONCRETE CURB & GUTTER, TYPE B-6.24
- ② TRANSITION FROM PROPOSED TYPE B-6.24 CURB & GUTTER TO EXISTING TYPE B-6.12 CURB & GUTTER IN 10'
- ③ POWER POLE TO REMAIN
- ④ PROPOSED COMBINATION CONCRETE CURB & GUTTER, TYPE B-6.12



MILLING & RESURFACING CONSISTS OF THE FOLLOWING:
 EXISTING HOT-MIX ASPHALT SURFACE REMOVAL, VARIABLE DEPTH
 PROPOSED LEVELING BINDER (MACHINE METHOD)
 PROPOSED HOT-MIX ASPHALT SURFACE COURSE, MIX "D", N70, 2"
 (STA. 95+00.00 TO STA. 97+50.00)

* 586.08 Represents the approach section HWE upstream of the dam, while the 576.07 represents the HWE downstream of the dam at the bridge.

FILE NAME = v:\2987\2987p002.dgn	USER NAME = shughes	DESIGNED -	REVISED -	STATE OF ILLINOIS DEPARTMENT OF TRANSPORTATION	F.A.U. 3799 (RIVER RD.) PLAN & PROFILE			F.A.U. RTE. 3799	SECTION 08-00036-00-BR	COUNTY KENDALL	TOTAL SHEETS 54	SHEET NO. 12
	PLLOT SCALE = 20.0000' / IN.	CHECKED -	REVISED -		SCALE: H=20 V=5	SHEET NO. 2 OF 3 SHEETS	STA. 97+00 TO STA. 103+00	ILLINOIS FED. AID PROJECT				
	PLLOT DATE = 12/22/2011	DATE -	REVISED -									
												CONTRACT NO. 87509