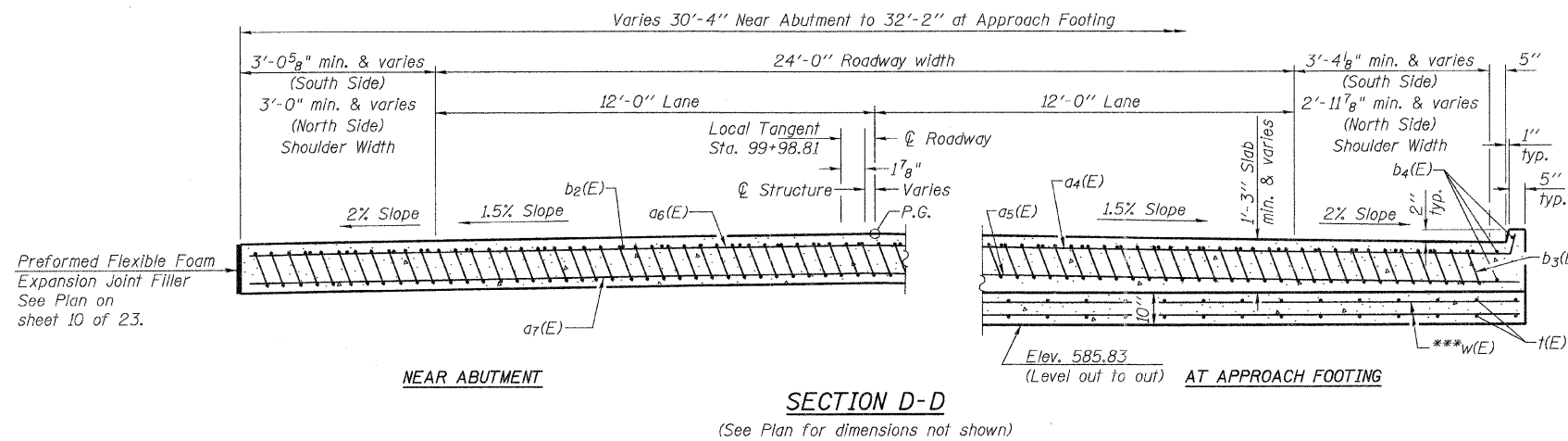


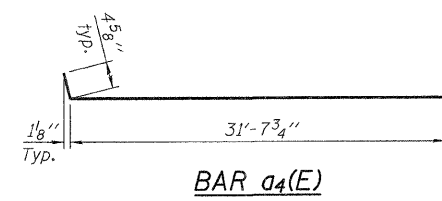
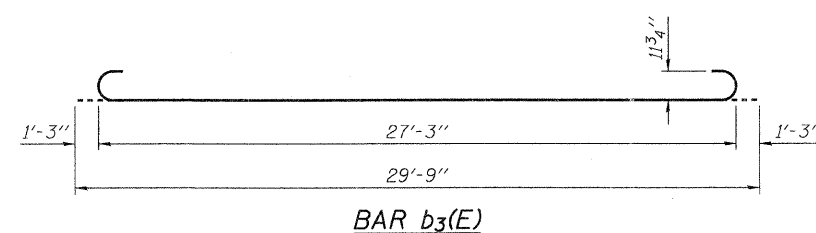
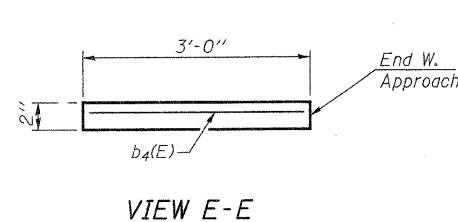
Notes:
 See Sheet 10 of 23 for Detail A.
 Approach slab concrete shall be paid for as Concrete Superstructure.
 Approach footing concrete shall be paid for as Concrete Structures.
 Reinforcement shall be paid for as Reinforcement Bars, Epoxy Coated.
 See Sheet 19 of 23 for v(E) bar details.
 The approach footing maximum applied service bearing pressure (Qmax) = 2.0 ksf.
 See Sheet 22 of 23 for bar splicer details.
 Cost of excavation for approach footing included with Concrete Structures.
 See Sheet 2 of 23 for Porous Granular Embankment (Special) and drainage treatment details.

**WEST APPROACH
 BILL OF MATERIAL**

Bar	No.	Size	Length	Shape
a4(E)	3	#4	32'-5"	—
a5(E)	6	#5	31'-10"	—
a6(E)	22	#4	30'-0"	—
a7(E)	40	#5	30'-0"	—
b2(E)	25	#4	29'-8"	—
b3(E)	73	#9	29'-9"	—
b4(E)	6	#4	2'-8"	—
t(E)	33	#4	9'-8"	—
w(E)	40	#5	31'-10"	—
Concrete Superstructure		Cu. Yd.	44.2	
Concrete Structures		Cu. Yd.	9.9	
Reinforcement Bars, Epoxy Coated		Pound	11,390	



* Tilt #9 b3(E) bars as required to maintain clearance.
 ** Cost included with Concrete Superstructure.
 *** Cut to fit as required.



**WEST BRIDGE APPROACH SLAB DETAILS
 RIVER RD. (F.A.U. 3799) OVER
 BLACKBERRY CREEK
 SECTION 08-00036-00-BR
 KENDALL COUNTY
 STATION 99+98.81**

DESIGNED	NPH
CHECKED	BAN
DRAWN	RMD
CHECKED	BAN

SHEET NO. 11 23 SHEETS	ROUTE NO.	SECTION	COUNTY	TOTAL SHEETS	SHEET NO.
	FAU 3799	08-00036-00-BR	KENDALL	54	32
	SN 047-6500		CONTRACT NO. 87509		
FED. ROAD DIST. NO. 7 ILLINOIS			FED. AID PROJECT BRM-9003(883)		