

|                     |                |                    |              |           |
|---------------------|----------------|--------------------|--------------|-----------|
| F.A.U. RTE.         | SECTION        | COUNTY             | TOTAL SHEETS | SHEET NO. |
| 6698                | 10-00183-00-FP | TAZEWELL           | 29           | 1         |
| FED. ROAD DIST. NO. | ILLINOIS       | CONTRACT NO. 89595 |              |           |

**INDEX OF SHEETS**

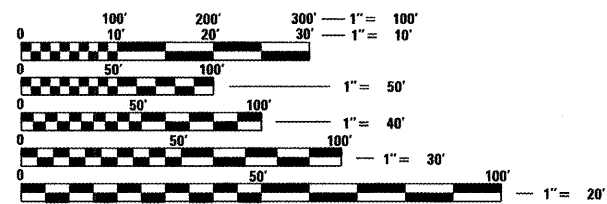
1. COVER
  2. GENERAL NOTES AND LEGEND
  3. SUMMARY OF QUANTITIES
  - 4.-6. TYPICAL SECTIONS
  - 7.-9. SCHEDULE OF QUANTITIES
  - 10.-11. ALIGNMENT, BENCHMARKS, AND TIES
  - 12.-19. RIGHT-OF-WAY PLANS
  - 20.-26. REMOVAL PLAN
  - 27.-35. PLAN AND PROFILE
  - 36.-39. INTERSECTION PLANS
  40. INFILTRATION BASIN GRADING
  - 41.-48. EROSION CONTROL PLANS
  - 49.-54. PAVEMENT MARKING AND SIGNING PLAN
  55. DETAILS
  - 56.-75. CROSS SECTIONS - PETRI LANE
  76. CROSS SECTIONS - OLD PETRI LANE
  77. CROSS SECTIONS - 14TH STREET
  - 78.-81. CROSS SECTIONS - INFILTRATION BASIN
- 82-89 DISTRICT 4 STANDARDS**

**IDOT HIGHWAY STANDARDS**

- |           |   |
|-----------|---|
| 000001-06 | STANDARD SYMBOLS, ABBREVIATIONS AND PATTERNS                  |
| 280001-06 | TEMPORARY EROSION CONTROL SYSTEMS                             |
| 424001-06 | PERPENDICULAR CURB RAMPS FOR SIDEWALKS                        |
| 602301-03 | INLET - TYPE A  |
| 602306-03 | INLET - TYPE B  |
| 602401-03 | MANHOLE TYPE A  |
| 602601-02 | PRECAST REINFORCED CONCRETE FLAT SLAB TOP                     |
| 602701-02 | MANHOLE STEPS   |
| 604001-03 | FRAME AND LIDS TYPE 1   |
| 604036-02 | FRAME AND GRATE TYPE 8  |
| 606001-04 | CONCRETE CURB TYPE B AND COMBINATION CONCRETE CURB AND GUTTER |
| 666001-01 | RIGHT OF WAY MARKERS  |
| 701006-03 | OFF-RD OPERATIONS, 2L, 2W, 15' TO 24" FROM PAVEMENT EDGE      |
| 701301-04 | LANE CLOSURE, 2L, 2W, SHORT TIME OPERATIONS                   |
| 701311-03 | LANE CLOSURE 2L, 2W MOVING OPERATIONS DAY ONLY                |
| 701501-06 | URBAN LANE CLOSURE, 2L, 2W, UNDIVIDED                         |
| 701502-04 | URBAN LANE CLOSURE, 2L, 2W, WITH BIDIRECTIONAL LEFT TURN LANE |
| 701701-08 | URBAN LANE CLOSURE, MULTILANE INTERSECTION                    |
| 701901-02 | TRAFFIC CONTROL DEVICES                                       |
| 728001-01 | TELESCOPING STEEL SIGN SUPPORT                                |
| 780001-03 | TYPICAL PAVEMENT MARKINGS                                     |

**IDOT DISTRICT 4 STANDARDS**

- |           |  |
|-----------|--|
| 423106-D4 | URBAN ENTRANCES, ACCESSIBLE TO THE DISABLED, FOR SEPARATED SIDEWALKS |
| 424001-D4 | SIDEWALK RAMPS, ACCESSIBLE TO THE DISABLED                           |
| 602201-D4 | INLET SPECIAL, TYPE 1  |
| 780001-D4 | TYPICAL PAVEMENT MARKINGS  |



FULL SIZE PLANS HAVE BEEN PREPARED USING STANDARD ENGINEERING SCALES. REDUCED SIZED PLANS WILL NOT CONFORM TO STANDARD SCALES. IN MAKING MEASUREMENTS ON REDUCED PLANS, THE ABOVE SCALES MAY BE USED.

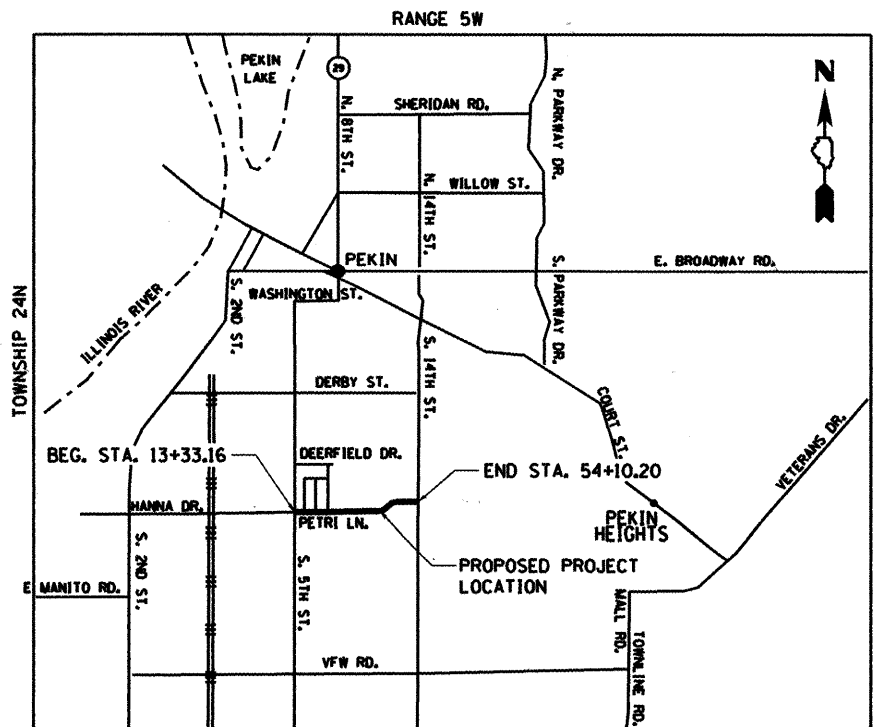
J.U.L.I.E.  
JOINT UTILITY LOCATION INFORMATION FOR EXCAVATION  
1-800-892-0123  
OR 811

ADT (2032) = 1300, SU=3%, MU=2%  
HIGHWAY CLASS: III  
FUNCTIONAL CLASSIFICATION: COLLECTOR  
DESIGN SPEED: 30 MPH  
DESIGN POLICY: BLR MANUAL  
VARIANCES GRANTED: LAST VERTICAL CURVE APPROACHING 14TH STREET HAS A LOWER "K" VALUE THAN ALLOWED BY THE BLR FOR A 30 MPH DESIGN SPEED. CURVE LENGTH BASED ON COMFORT CURVE CRITERIA AND IS EQUIVALENT TO A 25 MPH DESIGN SPEED.

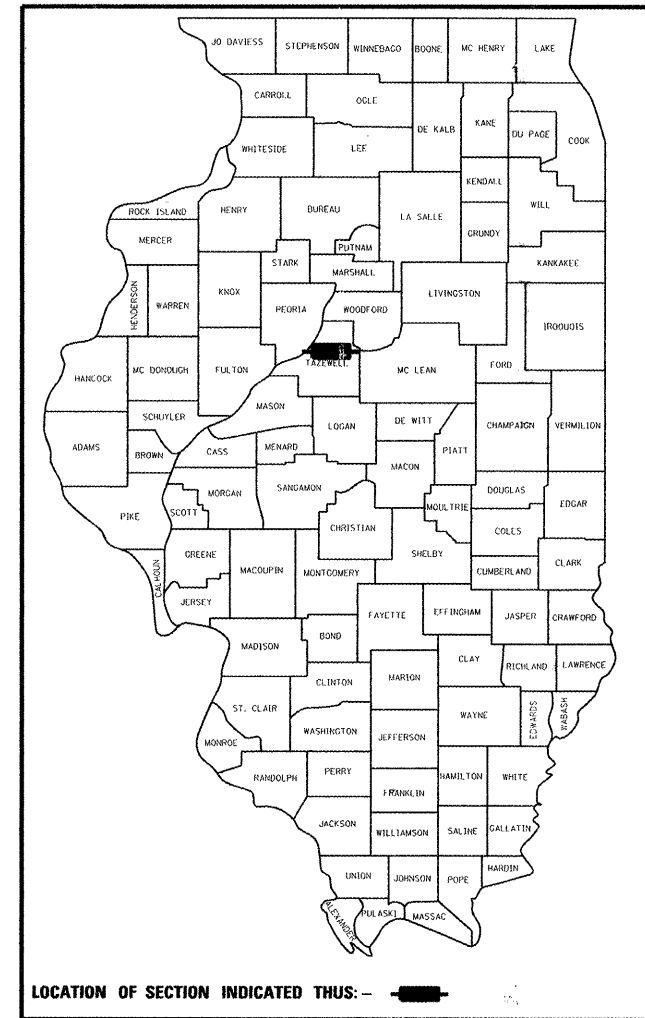
**STATE OF ILLINOIS  
DEPARTMENT OF TRANSPORTATION  
DIVISION OF HIGHWAYS**

**PLANS FOR PROPOSED  
PETRI LANE EXTENSION**

**CITY OF PEKIN  
FAU ROUTE 6698 (PETRI LANE)  
SECTION 10-00183-00-FP  
PROJECT NO. M-5093(154)  
JOB NO. C-94-021-11**



TOTAL AND NET LENGTH OF IMPROVEMENT: 4077.0 FT = 0.77 MILES



REGISTERED PROFESSIONAL ENGINEER  
**MATTHEW G. DAWSON**  
062-057939  
DATE SIGNED: 9/14/2011  
LIC. EXP. DATE: 11/30/2011

**PRINTED BY THE AUTHORITY  
OF THE STATE OF ILLINOIS**

APPROVED *[Signature]* 20 11  
CITY ENGINEER

PASSED *September 15* 20 11  
*Tony J. Lassaine sr*  
DISTRICT FOUR ENGINEER OF  
LOCAL ROADS & STREETS

Releasing For  
Bid Based on  
Limited Review *9/16* 20 11  
*Joseph E. Crowe sr*  
DEPUTY DIRECTOR OF HIGHWAYS,  
REGION THREE ENGINEER

STATE OF ILLINOIS  
DEPARTMENT OF TRANSPORTATION

DATE: 09/15/11

© Copyright Hanson Professional Services Inc. 2011  
**HANSON**  
Hanson Professional Services Inc.  
7625 N. University St., Suite 200  
Peoria, Illinois 61614  
Offices Nationwide