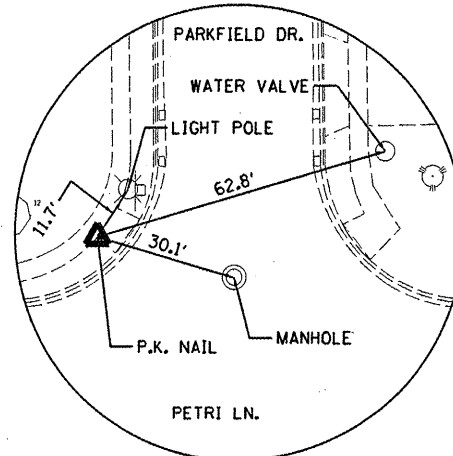
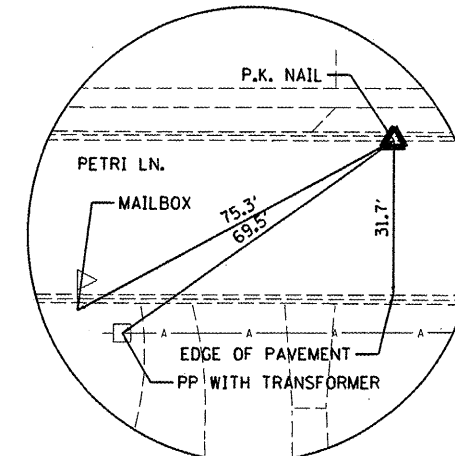


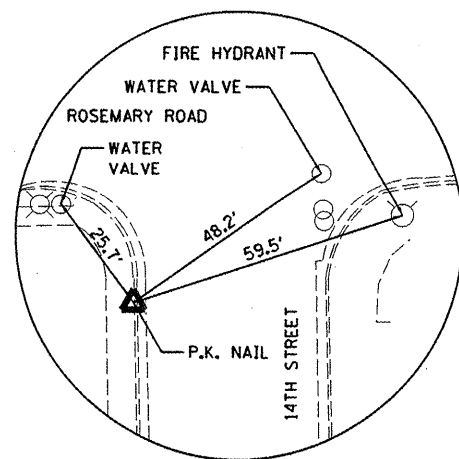
CONTROL POINT #5
SET P.K. NAIL



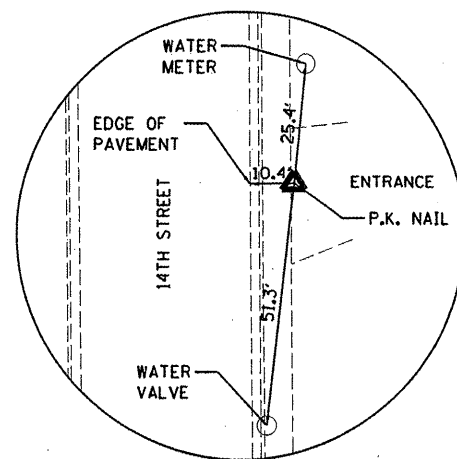
CONTROL POINT #6
SET P.K. NAIL



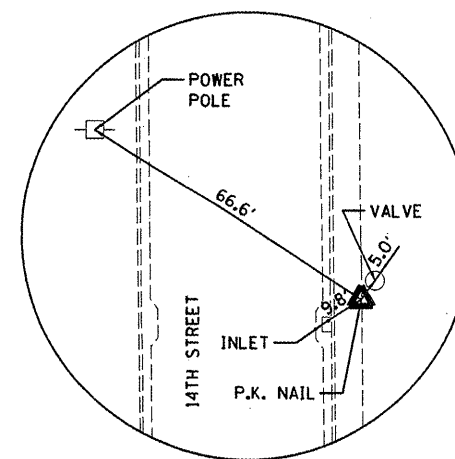
CONTROL POINT #7
SET P.K. NAIL



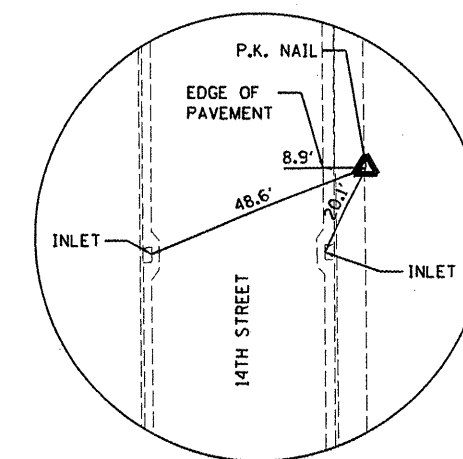
CONTROL POINT #55
SET P.K. NAIL



CONTROL POINT #59
SET P.K. NAIL



CONTROL POINT #60
SET P.K. NAIL



CONTROL POINT #61
SET P.K. NAIL

© Copyright Hanson Professional Services Inc. 2011
HANSON
 Hanson Professional Services Inc.

FILE NAME =	USER NAME = daws00078	DESIGNED - DLC	REVISED -
I:\08Jobs\08L0212A\CAD\Road\Sheet\c-102	ie.dgn	DRAWN - DLC	REVISED -
	PLOT SCALE = 200.000' / in.	CHECKED - MGD	REVISED -
	PLOT DATE = 09/14/2011	DATE - 9/14/2011	REVISED -

**STATE OF ILLINOIS
DEPARTMENT OF TRANSPORTATION**

ALIGNMENT, BENCHMARKS, AND TIES

SCALE: N.T.S. SHEET NO. OF SHEETS STA. 13+33.16 TO STA. 17+00.00

F.A.U. RTE.	SECTION	COUNTY	TOTAL SHEETS	SHEET NO.
6698	10-00183-00-FP	TAZEWELL	81	11

FED. ROAD DIST. NO. [ILLINOIS] FED. AID PROJECT W-5093 (154)