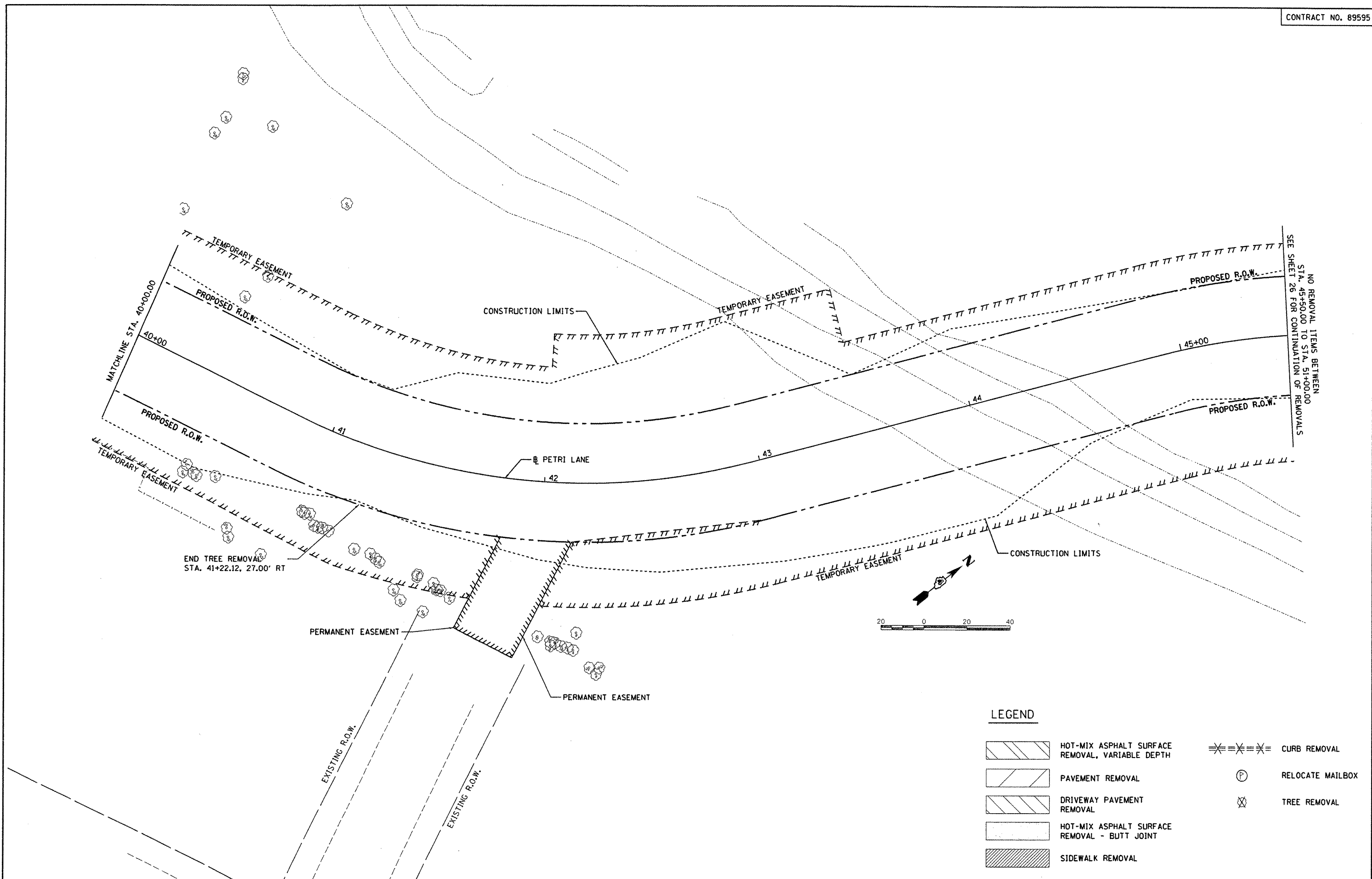


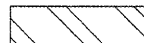
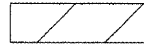
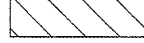
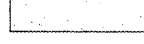

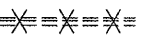


© Copyright Hanson Professional Services Inc. 2011
HANSON
 Hanson Professional Services Inc.



NO REMOVAL ITEMS BETWEEN STA. 45+50.00 TO STA. 51+00.00 SEE SHEET 26 FOR CONTINUATION OF REMOVALS

END TREE REMOVAL STA. 41+22.12, 27.00' RT

LEGEND

-  HOT-MIX ASPHALT SURFACE REMOVAL, VARIABLE DEPTH
-  PAVEMENT REMOVAL
-  DRIVEWAY PAVEMENT REMOVAL
-  HOT-MIX ASPHALT SURFACE REMOVAL - BUTT JOINT
-  SIDEWALK REMOVAL
-  CURB REMOVAL
-  RELOCATE MAILBOX
-  TREE REMOVAL

FILE NAME = 1:\083\Jobs\08L0212A\CAD\Road\Sheet\0-106.dgn	USER NAME = dewso00878	DESIGNED - DLC	REVISED -	STATE OF ILLINOIS DEPARTMENT OF TRANSPORTATION	PETRI LANE REMOVAL PLAN			F.A.U. RTE. 6698	SECTION 10-00183-00-FP	COUNTY TAZEWELL	TOTAL SHEETS 81	SHEET NO. 25
PLOT SCALE = 40,000' / 1" =	CHECKED - MGD	DRAWN - DLC	REVISED -		SCALE: 1"=20'	SHEET NO. OF SHEETS	STA. 40+00.00 TO STA. 45+50.00	FED. ROAD DIST. NO. ILLINOIS FED. AID PROJECT M-5093 (154)				
PLOT DATE = 09/14/2011	DATE - 9/14/2011	REVISOR -	REVISED -									