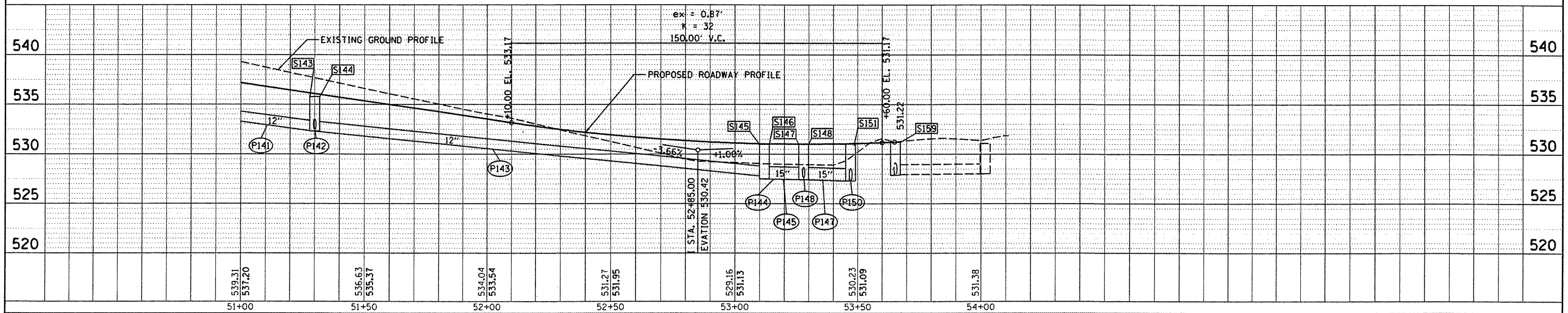


- LEGEND**
- E100 EXISTING STORM STRUCTURE
 - S100 STORM STRUCTURE
 - P100 STORM SEWER
- LEGEND - DRIVEWAYS**
- PORTLAND CEMENT CONCRETE DRIVEWAY PAVEMENT, 6"
 - DETECTABLE WARNING

PIPE NUMBER	FROM STRUCTURE	U/S INVERT	TO STRUCTURE	D/S INVERT	CLASS/TYPE	DIAMETER	LENGTH	SLOPE	TRENCH BACKFILL
P141	S142	538.17	S144	532.31	STORM SEWERS, CLASS A, TYPE 2	12	175	3.35%	59.7
P142	S143	532.50	S144	532.31	STORM SEWERS, CLASS A, TYPE 1	12	36	0.54%	4.7
P143	S144	532.31	S146	527.76	STORM SEWERS, CLASS A, TYPE 2	12	177	2.57%	49.2
P144	S146	527.51	S148	527.43	STORM SEWERS, CLASS A, TYPE 2	15	11	0.73%	3.1
P145	S145	528.00	S147	527.84	STORM SEWERS, CLASS A, TYPE 2	12	11	1.45%	2.6
P146	S150	528.17	S149	527.97	STORM SEWERS, CLASS A, TYPE 2	12	61	0.33%	17.0
P147	S149	527.97	S147	527.84	STORM SEWERS, CLASS A, TYPE 2	12	21	0.63%	5.3
P148	S147	527.84	S148	527.68	STORM SEWERS, CLASS A, TYPE 1	12	47	0.34%	6.2
P149	S148	527.43	S151	527.32	STORM SEWERS, CLASS A, TYPE 2	15	24	0.47%	7.2
P150	S151	527.32	S152	526.94	STORM SEWERS, CLASS A, TYPE 1	15	125	0.30%	411.3
P151	S152	526.94	E101	526.89	STORM SEWERS, CLASS A, TYPE 1	15	13	0.38%	45.8
P156	S158	528.90	S146	528.46	STORM SEWERS, CLASS A, TYPE 1	12	21	2.15%	4.0
P158	S160	528.64	S152	528.44	STORM SEWERS, CLASS A, TYPE 1	12	7	3.08%	1.3

STRUCTURE NUMBER	STATION	OFFSET	RIM ELEV	TYPE	INVERT ELEVATIONS			
					N	S	E	W
S143	51+30.00	19.33	RT	INLETS, SPECIAL	532.50			
S144	51+30.00	19.33	LT	INLETS, SPECIAL		532.31	532.31	532.31
S145	53+11.95	19.35	RT	INLETS, SPECIAL			528.00	
S146	53+11.95	23.28	LT	INLETS, SPECIAL	528.46		527.51	527.76
S147	53+26.95	22.60	RT	INLETS, SPECIAL	527.84		527.84	527.84
S148	53+26.95	28.26	LT	INLETS, SPECIAL		527.68	527.43	527.43
S149	53+46.39	39.39	RT	INLETS, SPECIAL		527.97		527.97
S150	53+65.60	100.76	RT	INLETS, TYPE A, TYPE 3 FRAME AND GRATE	528.17			
S151	53+47.09	47.27	LT	INLETS, TYPE B, TYPE 1 FRAME, CLOSED LID	527.32			527.32
S152	53+46.79	175.07	LT	INLETS, TYPE B, TYPE 1 FRAME, CLOSED LID	528.44	526.94	526.94	
S158	53+06.40	44.45	LT	END SECTIONS, 12"		528.90		
S159	53+65.41	12.46	LT	MANHOLE, TYPE A, 4' DIA, TYPE 1 F&G, CLOSED LID	527.88		527.95	
S160	53+46.77	183.12	LT	END SECTIONS, 12"		528.64		
E101	53+62.30	175.20	LT	EXISTING INLET	(existing)	(existing)	(existing)	526.89



DATE: _____ BY: _____
 SURVEYED: _____
 PLAN: _____
 NOTE BOOK: _____
 NO. _____

DATE: _____ BY: _____
 PROFILE: _____
 PLOTTED: _____
 GRADES CHECKED: _____
 NOTE BOOK: _____
 NO. _____